



THE ASSOCIATION OF FACULTIES
OF MEDICINE OF CANADA

Graduation Questionnaire National Report 2021



Table of Contents

Introduction	4
Selected Findings	6
Overall Rating of Medical Education	7
Pre-clinical Education	8
Clinical Learning Experience	10
Professionalism	19
Clinical Decision-Making and Clinical Care	21
General Skills	27
Preparedness for Residency	29
Research	30
School Administration, Student Affairs and Student Services	31
Mistreatment	41
Financial Information	45
Covid Faculty Response	46

Note: The results presented in these data tables are based on the responses of a self-selecting sample from a census of MD students eligible to graduate from a Canadian faculty of medicine as of January 2021. These responses should not be extrapolated to the entire medical student population. Comparisons to the Association of American Medical Colleges' (AAMC) Canadian Graduation Questionnaire (CGQ) data from previous years cannot be made due to changes in the content of the questionnaire, as well as the method of administration. Percentages may not add to 100 due to rounding. For more information, please refer to the Association of Faculties of Medicine (AFMC) Graduation Questionnaire (GQ) Methodological Notes, available at www.afmc.ca.

Introduction

The AFMC is proud to present the 2021 AFMC Graduation Questionnaire (AFMC GQ) National Report. The AFMC GQ is the result of the collaborative effort of medical educators, representatives from Canadian faculties of medicine, delegates of the Committee on Accreditation of Canadian Medical Schools (CACMS), students, and residents, supported by AFMC staff.

New this year, a short question on the effectiveness of the Faculties response to Covid was added – see Selected Findings below.

Note on Question 1

Due to a configuration error a page of the Graduation Questionnaire was hidden for some respondents. Respondents who were affected did not get the opportunity to answer questions that were listed on that specific page. Seven schools were affected by this error.

The page that was hidden included two questions:

1. “Please rate the quality of your medical education.” (Poor, Fair, Good, Very Good, or Excellent)
2. “Please comment on what you perceive to be the strengths and weaknesses of the medical school from which you are graduating.” (text response)

For Institutions affected by this error we have provided data from 2018, 2019, and 2020 in their 2021 faculty reports since no data specific to the questions above is available from 2021. The 2021 national data obtained from this question should not be directly compared to the national data and findings from previous years as the degree of accuracy and certainty was not measured on a national scale

We apologize to the faculties affected by this error and are committing to improving our testing capabilities to prevent errors of this nature.

- AFMC Data and Information Services Team



Data Collection and Reporting

The target population for the 2021 AFMC GQ was the 2,871 students who were registered in active studies and, as of January 2021, eligible for graduation from their MD program at a Canadian faculty of medicine.

The 2021 AFMC GQ was available in English and French between February 4, 2021 and May 11, 2021. Eligible students were e-mailed a unique, private link to gain access to the online survey. This customized URL was automatically generated by the online survey platform. Neither the AFMC nor the schools are able to link a student to their URL. In this way, participants were ensured anonymity.

A questionnaire was considered completed if a respondent consented to the terms of the questionnaire and submitted the questionnaire. We received 1,941 completed questionnaires, for a response rate of 67.6%.

To uphold rigorous standards of participant anonymity and the confidentiality of responses, only aggregate data are reported by AFMC. The AFMC produces a publicly available national report, combining data from all schools. Each faculty is also provided with a report that aggregates responses at the faculty and, if applicable, campus levels. These reports are not publicly disseminated by AFMC. No report is issued if there are fewer than 10 respondents for that reporting level (e.g., if a campus has fewer than 10 respondents).

Responses to questions about finances or research experience could, on their own, reveal information about the identity of a respondent. For this reason, no results are reported when fewer than 5 respondents selected a response option for these questions.

Individual-level data (microdata) will not be made publicly available by the AFMC. Clean and de-identified data are available to participating faculties upon request.

Interpretation of Results

Results obtained are not based on a random sample and respondents were self-selecting. For this reason, extreme caution must be applied when performing comparisons or drawing conclusions based on this non-random sample.

When appropriate, standard deviations of the results are presented. This statistic is useful to assess the distribution of the answers to a question. The standard deviations in this report are not meant to be used to build confidence intervals or infer statistical significance.

For more information on the 2021 AFMC GQ please send inquiries to asq@afmc.ca. For more detailed methodological notes, please visit [Graduation Questionnaire | AFMC](#)



Selected Findings

The percentage of students that indicated having participated in a research project or other scholarly activity with a faculty member has increased.

In 2021, 77% of students have indicated having participated in a research project or other scholarly activity with a faculty member. An increase from 73.9% in 2020 and 73.1% in 2019. 3.4% of students that have not participated have reported that the opportunity was not available. A decrease from the 4.0% reported in 2020 and 2.7% reported in 2019.

The percentage of students that know what to do if exposed to an infectious or environmental hazard like a needle injury has lowered.

89.2% of students that responded to the GQ indicated that they knew what to do if they were exposed to an infectious or environmental hazard like a needle stick injury. This percentage was 91.3% in 2020 and 92.3% in 2019.

The number of students satisfied with programs/activities that promote effective stress management, a balanced lifestyle and overall wellbeing has decreased.

In 2021, 74.8% of students indicated being satisfied or very satisfied with programs/activities that promote effective stress management, a balanced lifestyle and overall wellbeing. In 2020, this percentage was 75.2% while in 2019, it was 74.8.

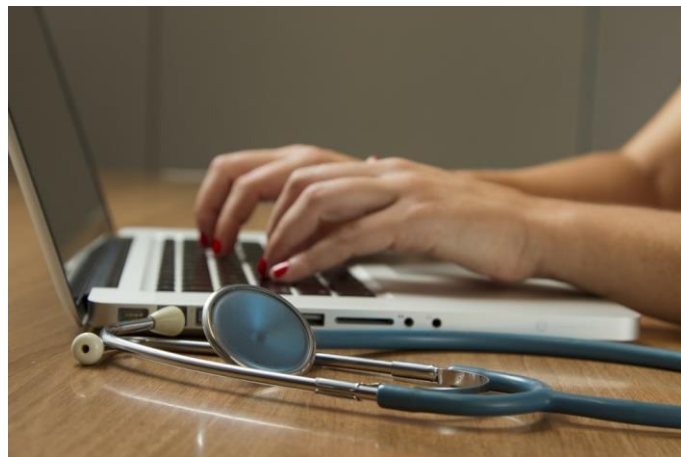
More students are satisfied with the student health services and student mental health services.

90% of students have been satisfied (60.4%) or very satisfied (29.6%) with the student health services in 2021. Similarly, 80.6% of students have been satisfied (49.7%) or very satisfied (30.9%) with the student mental health services. These percentages all indicate an improvement from 2019.

COVID 19

Students are satisfied with how their faculty responded to COVID 19.

When asked to indicate their level of satisfaction with how their faculty responded to the pandemic, 77.1% students indicated being satisfied (54.1%) or very satisfied (23.0%).



Overall Rating of Medical Education

1 Please rate the quality of your medical education.

Response options: Poor; Fair; Good; Very Good; Excellent. For the purposes of analysis, the response options listed above were coded from 1 to 5, respectively.

	2019 Count	2019 Percent	2020 Count	2020 Percent	2021 Count	2021 Percent
Poor	8	0.4	8	0.4	17	1.6
Fair	83	4.3	74	3.8	61	5.8
Good	383	19.9	384	19.9	236	22.5
Very Good	1000	51.9	1003	52.0	539	51.3
Excellent	451	23.4	460	23.8	198	18.8

Respondents: 1051
Mean: 3.80
Standard Deviation: 0.87

Pre-clinical Education

2

The educational activities provided in my MD program in the following areas helped me better prepare for required clinical learning experiences and electives:

Response options: Strongly Disagree; Disagree; Agree; Strongly Agree. For the purposes of analysis, the response options from Strongly Disagree to Strongly Agree were coded from 1 to 4, respectively.

Note: Percentages (ratings) add to 100 across rows, not columns.

		Ratings (%)				Count	Mean	Standard Deviation
		Strongly Disagree	Disagree	Agree	Strongly Agree			
Behavioural/Social Sciences	2021	2.2	10.6	65.5	21.6	1739	3.06	0.64
	2020	2.1	11.0	65.3	21.7	1917	3.07	0.64
	2019	1.7	11.2	67.8	19.3	1915	3.05	0.61
Biochemistry	2021	6.0	29.1	57.1	7.9	1741	2.67	0.71
	2020	5.3	30.8	56.8	7.1	1918	2.66	0.69
	2019	5.6	29.7	57.5	7.2	1915	2.66	0.69
Biostatistics and epidemiology	2021	3.4	17.2	64.3	15.1	1743	2.91	0.67
	2020	3.5	19.4	62.1	15.0	1918	2.88	0.69
	2019	2.7	19.1	64.3	13.9	1920	2.89	0.65
Genetics	2021	4.1	25.6	61.8	8.5	1739	2.75	0.66
	2020	3.2	27.8	62.3	6.6	1912	2.72	0.63
	2019	3.2	27.3	62.9	6.5	1916	2.73	0.63
Gross anatomy	2021	3.2	11.1	47.6	38.1	1745	3.21	0.76
	2020	3.8	12.3	45.7	38.2	1925	3.18	0.79
	2019	2.4	13.6	49.8	34.2	1920	3.16	0.74
Immunology	2021	1.5	14.4	70.1	14.0	1735	2.97	0.59
	2020	2.5	16.4	68.4	12.7	1911	2.91	0.62
	2019	2.4	15.3	70.8	11.5	1915	2.91	0.60
Microanatomy/Histology	2021	5.9	23.7	56.1	14.3	1740	2.79	0.76
	2020	7.7	23.9	55.7	12.7	1919	2.73	0.78
	2019	5.7	21.9	56.9	15.6	1917	2.82	0.76
Microbiology	2021	3.7	16.6	64.9	14.8	1737	2.91	0.67
	2020	4.4	17.3	63.0	15.3	1912	2.89	0.70
	2019	3.2	17.2	65.3	14.3	1911	2.91	0.66
Nutrition	2021	7.2	29.5	55.5	7.8	1739	2.64	0.73
	2020	6.4	31.7	54.4	7.5	1919	2.63	0.71
	2019	6.3	30.4	55.3	8.0	1914	2.65	0.72
Pathology	2021	3.8	19.0	62.6	14.7	1732	2.88	0.69
	2020	3.8	21.0	60.8	14.4	1914	2.86	0.70

		Ratings (%)				Count	Mean	Standard Deviation
		Strongly Disagree	Disagree	Agree	Strongly Agree			
	2019	4.1	19.5	62.8	13.6	1914	2.86	0.69
Pathophysiology	2021	1.4	4.2	52.4	41.9	1737	3.35	0.63
	2020	0.9	4.5	52.1	42.5	1919	3.36	0.61
	2019	0.8	4.2	54.7	40.2	1915	3.34	0.60
Pharmacology	2021	3.4	13.8	57.6	25.2	1745	3.05	0.72
	2020	3.6	14.2	55.4	26.7	1918	3.05	0.74
	2019	3.0	14.7	57.9	24.5	1916	3.04	0.71
Physiology	2021	1.0	3.8	56.5	38.7	1746	3.33	0.60
	2020	0.9	4.1	54.5	40.4	1922	3.34	0.60
	2019	0.5	4.1	58.2	37.2	1911	3.32	0.58
Radiology/Imaging	2021	2.3	12.8	57.4	27.5	1737	3.10	0.70
	2020	2.6	14.0	59.3	24.0	1921	3.05	0.69
	2019	2.1	15.4	60.0	22.5	1922	3.03	0.68

Clinical Learning Experience

3 Please select the appropriate description of the structure of your clinical learning experience.

Response options: A. Rotation based - Clinical disciplines scheduled in a series of rotations; B. Longitudinal Integrated Clerkship (LIC) - Longitudinal integrated clerkship experiences; C. Hybrid - mix of both A and B

	2019 Count	2019 Percent	2020 Count	2020 Percent	2021 Count	2021 Percent
A. Rotation based - Clinical disciplines scheduled in a series of rotations	1646	85.4	1671	86.6	1480	84.1
B. Longitudinal Integrated Clerkship (LIC) - Longitudinal integrated clerkship experiences	117	6.1	109	5.7	102	5.8
C. Hybrid - mix of A and B	164	8.5	149	7.7	178	10.1

Respondents: 1760

4 Please rate the quality of your educational experiences in each of the following:

Response options: Poor; Fair; Good; Very Good; Excellent. For the purposes of analysis, "Poor" to "Excellent" were coded from 1 to 5, respectively.

Note: Percentages (ratings) add to 100 across rows, not columns.

		Ratings (%)					Count	Mean	Standard Deviation
		Poor	Fair	Good	Very Good	Excellent			
Emergency Medicine	2021	1.4	4.3	17.4	36.3	40.6	1758	4.10	0.93
	2020	0.8	3.4	16.8	37.1	41.8	1921	4.16	0.88
	2019	0.7	3.3	17.0	39.2	39.8	1924	4.14	0.86
Family Medicine	2021	1.7	4.2	16.4	34.5	43.1	1760	4.13	0.95
	2020	1.4	4.0	14.3	34.7	45.5	1928	4.19	0.92
	2019	1.2	4.0	15.6	35.1	44.1	1924	4.17	0.91
Internal Medicine	2021	2.2	5.3	17.1	34.4	41.0	1757	4.07	0.99
	2020	2.9	5.3	16.8	36.1	38.9	1924	4.03	1.01
	2019	1.8	5.8	18.9	37.7	35.8	1926	4.00	0.97
Obstetrics/Gynecology	2021	5.3	12.1	25.3	31.9	25.4	1755	3.60	1.14
	2020	6.4	11.5	24.2	32.0	25.9	1929	3.60	1.17
	2019	5.3	11.1	26.7	33.3	23.5	1926	3.59	1.12
Pediatrics	2021	3.4	8.4	23.9	37.4	27.0	1759	3.76	1.04
	2020	3.2	9.0	24.8	34.9	28.1	1928	3.76	1.06
	2019	3.8	9.1	25.8	35.9	25.4	1924	3.70	1.06
Psychiatry	2021	2.0	6.7	22.5	37.5	31.4	1757	3.90	0.99
	2020	2.3	6.7	23.4	37.2	30.3	1928	3.86	1.00
	2019	2.5	9.1	24.5	36.9	26.9	1928	3.77	1.03
Surgery	2021	5.1	9.2	27.6	34.3	23.8	1755	3.63	1.10
	2020	4.4	12.2	26.4	33.7	23.3	1929	3.59	1.10
	2019	5.1	11.1	28.7	34.0	21.1	1925	3.55	1.09
Longitudinal Integrated Clerkship (LIC)	2021	2.5	4.3	16.9	27.7	48.6	278	4.15	1.01
	2020	2.7	5.5	18.4	25.5	47.8	255	4.10	1.06
	2019	4.6	4.6	19.3	28.2	43.2	280	4.01	1.11

Please indicate your level of agreement with each of the following statements related to the clinical learning experiences in this discipline/in the Longitudinal Integrated Clerkship (LIC) at your medical school.

I had sufficient access to the variety of patients and procedures required to complete my encounter log.

Response options: Strongly Disagree; Disagree; Agree; Strongly Agree. For the purposes of analysis, response options from Strongly Disagree to Strongly Agree were coded from 1 to 4, respectively.

Note: Percentages (ratings) add to 100 across rows, not columns.

		Ratings (%)				Count	Mean	Standard Deviation
		Strongly Disagree	Disagree	Agree	Strongly Agree			
Emergency Medicine	2021	0.5	5.1	48.5	46.0	1729	3.40	0.61
	2020	0.4	4.7	49.8	45.1	1907	3.40	0.60
	2019	0.2	3.3	49.2	47.4	1908	3.44	0.57
Family Medicine	2021	0.5	6.3	39.9	53.4	1728	3.46	0.63
	2020	0.2	3.7	39.7	56.4	1902	3.52	0.58
	2019	0.2	3.6	42.7	53.5	1817	3.49	0.58
Internal Medicine	2021	0.8	5.3	43.1	50.8	1716	3.44	0.63
	2020	0.3	4.3	46.0	49.4	1875	3.44	0.59
	2019	0.7	4.5	47.7	47.0	1813	3.41	0.61
Obstetrics/Gynecology	2021	1.6	12.7	47.4	38.3	1658	3.22	0.72
	2020	1.3	10.1	49.0	39.6	1804	3.27	0.69
	2019	1.1	8.4	52.7	37.8	1753	3.27	0.66
Pediatrics	2021	1.7	11.6	49.9	36.9	1695	3.22	0.71
	2020	0.6	8.3	49.7	41.3	1867	3.32	0.65
	2019	0.4	8.3	53.0	38.2	1779	3.29	0.63
Psychiatry	2021	0.5	6.2	45.7	47.6	1715	3.40	0.63
	2020	0.0	7.2	47.4	45.3	1882	3.38	0.62
	2019	0.6	5.7	51.5	42.2	1803	3.35	0.62
Surgery	2021	0.7	7.8	51.0	40.5	1660	3.31	0.64
	2020	0.6	7.6	54.5	37.4	1841	3.29	0.63
	2019	0.6	7.3	56.7	35.3	1754	3.27	0.62
Longitudinal Integrated Clerkship (LIC)	2021	0.0	2.6	35.3	62.1	269	3.59	0.54
	2020	0.8	3.3	40.7	55.3	246	3.50	0.60
	2019	0.8	3.1	44.8	51.3	261	3.47	0.60

Please indicate your level of agreement with each of the following statements related to the clinical learning experiences in this discipline/in the Longitudinal Integrated Clerkship (LIC) at your medical school.

I was given appropriate responsibility for patient care.

Response options: Strongly Disagree; Disagree; Agree; Strongly Agree. For the purposes of analysis, response options from Strongly Disagree to Strongly Agree were coded from 1 to 4, respectively.

Note: Percentages (ratings) add to 100 across rows, not columns.

		Ratings (%)				Count	Mean	Standard Deviation
		Strongly Disagree	Disagree	Agree	Strongly Agree			
Emergency Medicine	2021	0.1	0.9	44.0	55.0	1728	3.54	0.52
	2020	0.0	0.8	44.1	55.1	1906	3.54	0.51
	2019	0.1	0.8	44.8	54.3	1905	3.53	0.52
Family Medicine	2021	0.2	2.1	38.7	59.0	1728	3.56	0.55
	2020	0.1	2.3	36.4	61.1	1899	3.59	0.54
	2019	0.2	2.3	38.7	58.8	1813	3.56	0.55
Internal Medicine	2021	0.3	3.1	43.4	53.1	1717	3.49	0.58
	2020	0.4	4.7	45.8	49.1	1875	3.44	0.60
	2019	0.5	3.2	46.4	49.9	1813	3.46	0.58
Obstetrics/Gynecology	2021	0.7	9.7	53.0	36.6	1656	3.26	0.65
	2020	1.1	9.7	54.8	34.5	1804	3.23	0.66
	2019	0.8	9.7	55.2	34.3	1752	3.23	0.65
Pediatrics	2021	0.6	4.8	51.2	43.4	1695	3.37	0.61
	2020	0.9	7.0	49.8	42.3	1866	3.34	0.64
	2019	0.3	5.3	54.9	39.4	1778	3.33	0.59
Psychiatry	2021	0.5	4.9	46.3	48.3	1716	3.42	0.61
	2020	1.1	5.5	49.1	44.4	1882	3.37	0.64
	2019	0.8	6.8	50.7	41.7	1802	3.33	0.64
Surgery	2021	0.5	7.5	55.2	36.7	1660	3.28	0.62
	2020	0.9	9.2	56.1	33.8	1841	3.23	0.64
	2019	0.7	9.2	57.3	32.7	1755	3.22	0.63
Longitudinal Integrated Clerkship (LIC)	2021	0.0	1.1	35.7	63.2	269	3.62	0.51
	2020	0.0	2.0	40.7	57.3	246	3.55	0.54
	2019	0.0	0.4	45.8	53.8	260	3.53	0.51

Please indicate your level of agreement with each of the following statements related to the clinical learning experiences in this discipline/in the Longitudinal Integrated Clerkship (LIC) at your medical school.

The supervision I received ensured my safety.

Response options: Strongly Disagree; Disagree; Agree; Strongly Agree. For the purposes of analysis, response options from Strongly Disagree to Strongly Agree were coded from 1 to 4, respectively.

Note: Percentages (ratings) add to 100 across rows, not columns.

		Ratings (%)				Count	Mean	Standard Deviation
		Strongly Disagree	Disagree	Agree	Strongly Agree			
Emergency Medicine	2021	0.2	1.0	40.8	58.0	1727	3.57	0.53
	2020	0.0	1.1	42.5	56.4	1903	3.55	0.52
	2019	0.1	0.8	44.2	54.9	1905	3.54	0.52
Family Medicine	2021	0.3	0.6	34.9	64.2	1724	3.63	0.51
	2020	0.1	0.8	35.2	63.9	1897	3.63	0.50
	2019	0.2	0.6	37.5	61.7	1814	3.61	0.51
Internal Medicine	2021	0.3	1.7	43.7	54.3	1715	3.52	0.55
	2020	0.2	2.2	47.0	50.6	1874	3.48	0.55
	2019	0.3	1.8	47.7	50.2	1810	3.48	0.55
Obstetrics/Gynecology	2021	0.4	2.1	49.5	48.1	1658	3.45	0.56
	2020	0.3	2.7	52.8	44.2	1801	3.41	0.56
	2019	0.1	2.4	54.3	43.2	1752	3.41	0.54
Pediatrics	2021	0.2	0.8	45.7	53.3	1693	3.52	0.52
	2020	0.1	0.7	47.4	51.9	1862	3.51	0.52
	2019	0.1	0.5	50.1	49.3	1776	3.49	0.52
Psychiatry	2021	0.5	1.9	44.5	53.2	1712	3.50	0.56
	2020	0.4	2.3	48.9	48.4	1882	3.45	0.56
	2019	0.3	2.7	49.7	47.4	1802	3.44	0.56
Surgery	2021	0.5	2.6	52.4	44.5	1657	3.41	0.57
	2020	0.4	2.8	56.2	40.6	1839	3.37	0.56
	2019	0.3	3.0	58.2	38.5	1752	3.35	0.55
Longitudinal Integrated Clerkship (LIC)	2021	0.0	1.5	34.2	64.3	269	3.63	0.51
	2020	0.4	0.4	42.7	56.5	246	3.55	0.53
	2019	0.0	0.4	47.5	52.1	261	3.52	0.51

Please indicate your level of agreement with each of the following statements related to the clinical learning experiences in this discipline/in the Longitudinal Integrated Clerkship (LIC) at your medical school.

The supervision I received ensured the safety of the patients for whom I provided care.

Response options: Strongly Disagree; Disagree; Agree; Strongly Agree. For the purposes of analysis, response options from Strongly Disagree to Strongly Agree were coded from 1 to 4, respectively.

Note: Percentages (ratings) add to 100 across rows, not columns.

		Ratings (%)				Count	Mean	Standard Deviation
		Strongly Disagree	Disagree	Agree	Strongly Agree			
Emergency Medicine	2021	0.2	1.3	40.9	57.6	1725	3.56	0.53
	2020	0.1	1.1	43.0	55.8	1905	3.54	0.53
	2019	0.2	1.0	44.0	54.8	1905	3.53	0.53
Family Medicine	2021	0.2	0.8	35.3	63.7	1726	3.63	0.51
	2020	0.2	1.2	35.0	63.7	1899	3.62	0.52
	2019	0.1	0.9	37.4	61.5	1810	3.60	0.51
Internal Medicine	2021	0.5	3.1	43.5	52.9	1716	3.49	0.58
	2020	0.4	3.8	46.4	49.5	1870	3.45	0.59
	2019	0.7	3.3	47.5	48.6	1808	3.44	0.60
Obstetrics/Gynecology	2021	0.4	2.8	47.8	49.0	1652	3.45	0.57
	2020	0.4	3.3	51.5	44.8	1801	3.41	0.57
	2019	0.2	3.0	51.9	44.9	1750	3.42	0.56
Pediatrics	2021	0.3	0.6	44.5	54.6	1693	3.53	0.53
	2020	0.2	0.6	45.4	53.8	1865	3.53	0.52
	2019	0.2	1.1	48.4	50.3	1778	3.49	0.53
Psychiatry	2021	0.2	1.3	44.1	54.4	1716	3.53	0.54
	2020	0.4	1.6	47.8	50.2	1879	3.48	0.55
	2019	0.1	2.2	49.6	48.1	1799	3.46	0.54
Surgery	2021	0.6	3.1	52.0	44.4	1659	3.40	0.58
	2020	0.6	4.2	54.8	40.4	1836	3.35	0.59
	2019	0.6	5.0	56.2	38.1	1750	3.32	0.60
Longitudinal Integrated Clerkship (LIC)	2021	0.0	0.7	34.9	64.3	269	3.64	0.50
	2020	0.4	1.6	40.2	57.7	246	3.55	0.55
	2019	0.0	0.4	47.1	52.5	261	3.52	0.51

Please indicate your level of agreement with each of the following statements related to the clinical learning experiences in this discipline/in the Longitudinal Integrated Clerkship (LIC) at your medical school.

A faculty member or resident observed me taking a patient history.

Response options: Strongly Disagree; Disagree; Agree; Strongly Agree. For the purposes of analysis, response options from Strongly Disagree to Strongly Agree were coded from 1 to 4, respectively.

Note: Percentages (ratings) add to 100 across rows, not columns.

		Ratings (%)				Count	Mean	Standard Deviation
		Strongly Disagree	Disagree	Agree	Strongly Agree			
Emergency Medicine	2021	1.7	12.5	44.1	41.7	1727	3.26	0.74
	2020	2.2	14.0	45.3	38.5	1903	3.20	0.76
	2019	2.1	11.4	46.2	40.3	1905	3.25	0.73
Family Medicine	2021	0.6	5.7	37.2	56.5	1727	3.50	0.63
	2020	0.8	6.0	36.1	57.1	1896	3.50	0.65
	2019	0.8	5.8	38.7	54.7	1814	3.47	0.64
Internal Medicine	2021	1.6	9.1	43.7	45.7	1715	3.33	0.71
	2020	1.1	10.3	44.5	44.1	1874	3.32	0.70
	2019	1.4	7.8	46.2	44.6	1810	3.34	0.68
Obstetrics/Gynecology	2021	1.4	11.8	48.6	38.2	1656	3.24	0.71
	2020	1.8	14.8	47.3	36.0	1804	3.18	0.74
	2019	1.8	13.0	51.1	34.1	1752	3.18	0.72
Pediatrics	2021	0.3	6.0	47.8	46.0	1694	3.39	0.61
	2020	0.4	7.2	48.4	43.9	1866	3.36	0.63
	2019	0.7	6.3	49.9	43.1	1776	3.35	0.63
Psychiatry	2021	0.3	2.8	41.2	55.7	1715	3.52	0.57
	2020	0.4	3.1	44.7	51.8	1883	3.48	0.58
	2019	0.4	3.1	45.6	50.9	1803	3.47	0.58
Surgery	2021	3.2	16.1	46.2	34.4	1655	3.12	0.79
	2020	3.8	19.1	47.0	30.2	1840	3.04	0.80
	2019	3.3	17.1	49.7	29.9	1753	3.06	0.77
Longitudinal Integrated Clerkship (LIC)	2021	0.4	1.5	35.3	62.8	269	3.61	0.54
	2020	0.4	2.8	41.9	54.9	246	3.51	0.58
	2019	0.4	3.8	46.4	49.4	261	3.45	0.59

10 Please indicate your level of agreement with each of the following statements related to the clinical learning experiences in this discipline/in the Longitudinal Integrated Clerkship (LIC) at your medical school.

A faculty member or resident observed me performing a physical examination [mental status examination for Psychiatry].

Response options: Strongly Disagree; Disagree; Agree; Strongly Agree. For the purposes of analysis, response options from Strongly Disagree to Strongly Agree were coded from 1 to 4, respectively.

Note: Percentages (ratings) add to 100 across rows, not columns.

		Ratings (%)				Count	Mean	Standard Deviation
		Strongly Disagree	Disagree	Agree	Strongly Agree			
Emergency Medicine	2021	1.3	9.1	46.2	43.3	1724	3.32	0.69
	2020	1.8	10.2	48.6	39.4	1904	3.26	0.71
	2019	1.7	8.3	48.9	41.2	1905	3.30	0.69
Family Medicine	2021	0.6	3.8	39.0	56.6	1727	3.52	0.60
	2020	0.7	4.8	36.9	57.6	1898	3.51	0.62
	2019	0.6	4.3	40.2	55.0	1811	3.50	0.61
Internal Medicine	2021	1.3	5.0	46.0	47.6	1712	3.40	0.65
	2020	0.7	5.9	46.9	46.4	1871	3.39	0.63
	2019	0.7	4.6	47.4	47.3	1808	3.41	0.61
Obstetrics/Gynecology	2021	1.0	6.2	50.1	42.8	1658	3.35	0.64
	2020	1.2	6.9	50.5	41.4	1801	3.32	0.65
	2019	0.7	6.9	53.8	38.6	1747	3.30	0.63
Pediatrics	2021	0.3	3.6	47.3	48.8	1693	3.45	0.58
	2020	0.3	4.4	49.3	46.0	1865	3.41	0.59
	2019	0.3	3.5	51.5	44.6	1775	3.40	0.58
Psychiatry	2021	0.4	2.9	42.7	54.1	1714	3.51	0.57
	2020	0.5	3.4	45.7	50.5	1879	3.46	0.59
	2019	0.7	3.6	46.2	49.6	1800	3.45	0.60
Surgery	2021	2.9	13.6	48.0	35.5	1657	3.16	0.76
	2020	3.3	14.6	50.7	31.4	1838	3.10	0.76
	2019	2.6	13.7	52.3	31.3	1756	3.12	0.73
Longitudinal Integrated Clerkship (LIC)	2021	0.4	2.2	34.6	62.8	269	3.60	0.55
	2020	0.4	2.8	41.9	54.9	246	3.51	0.58
	2019	0.4	3.4	47.1	49.0	261	3.45	0.58

Please indicate your level of agreement with each of the following statements related to the clinical learning experiences in this discipline/in the Longitudinal Integrated Clerkship (LIC) at your medical school.

I received feedback early enough to allow me time to improve my performance.

Response options: Strongly Disagree; Disagree; Agree; Strongly Agree. For the purposes of analysis, response options from Strongly Disagree to Strongly Agree were coded from 1 to 4, respectively.

Note: Percentages (ratings) add to 100 across rows, not columns.

		Ratings (%)				Count	Mean	Standard Deviation
		Strongly Disagree	Disagree	Agree	Strongly Agree			
Emergency Medicine	2021	0.5	2.6	47.4	49.5	1720	3.46	0.57
	2020	0.3	4.2	48.5	47.0	1904	3.42	0.59
	2019	0.3	3.4	49.9	46.4	1905	3.42	0.58
Family Medicine	2021	0.5	3.8	40.0	55.7	1724	3.51	0.60
	2020	0.5	3.0	41.2	55.3	1897	3.51	0.58
	2019	0.7	2.8	44.8	51.7	1811	3.48	0.59
Internal Medicine	2021	1.3	4.4	48.3	46.0	1715	3.39	0.64
	2020	0.8	6.4	49.7	43.1	1873	3.35	0.63
	2019	1.0	5.5	51.1	42.4	1811	3.35	0.63
Obstetrics/Gynecology	2021	1.2	10.1	53.1	35.6	1651	3.23	0.67
	2020	1.6	9.3	54.8	34.3	1802	3.22	0.67
	2019	1.1	9.4	57.2	32.3	1750	3.21	0.65
Pediatrics	2021	0.7	3.9	51.2	44.3	1692	3.39	0.60
	2020	0.6	5.2	50.6	43.6	1863	3.37	0.61
	2019	0.6	4.6	55.5	39.4	1776	3.34	0.59
Psychiatry	2021	0.4	4.2	46.2	49.2	1715	3.44	0.60
	2020	0.9	5.6	49.0	44.5	1879	3.37	0.63
	2019	0.8	5.0	51.5	42.7	1802	3.36	0.61
Surgery	2021	1.6	11.5	54.1	32.9	1656	3.18	0.69
	2020	2.0	11.6	54.5	31.8	1837	3.16	0.70
	2019	2.0	11.2	56.6	30.3	1754	3.15	0.69
Longitudinal Integrated Clerkship (LIC)	2021	0.0	1.9	35.1	63.1	268	3.61	0.52
	2020	0.4	1.6	39.0	58.9	246	3.57	0.55
	2019	0.4	2.3	47.7	49.6	260	3.47	0.56

Professionalism

12

For each of the following beliefs/values and behaviours, indicate your level of agreement that it was emphasized in your medical education program.

Response options: Strongly Disagree; Disagree; Agree; Strongly Agree. For the purposes of analysis, the response options were coded from 1 to 4, respectively.

Note: Percentages (ratings) add to 100 across rows, not columns.

		Ratings (%)				Count	Mean	Standard Deviation
		Strongly Disagree	Disagree	Agree	Strongly Agree			
A commitment to advocate at all times the interest of one's patients over one's own interests	2021	0.5	4.3	53.2	42.1	1757	3.37	0.59
	2020	0.5	4.8	53.3	41.4	1928	3.36	0.59
	2019	0.7	4.4	55.0	39.9	1923	3.34	0.60
A commitment to advocate for access to health care for members of traditionally underserved populations	2021	0.9	6.3	49.4	43.5	1755	3.35	0.64
	2020	0.6	4.6	50.4	44.5	1930	3.39	0.60
	2019	1.0	4.1	51.4	43.6	1923	3.38	0.61
The need to engage in lifelong learning to stay abreast of relevant scientific advances	2021	0.5	2.3	49.5	47.7	1753	3.44	0.57
	2020	0.1	2.9	47.1	49.9	1929	3.47	0.56
	2019	0.3	2.4	48.5	48.8	1922	3.46	0.56
The threats to medical professionalism posed by conflicts of interest	2021	1.4	9.2	59.9	29.5	1755	3.17	0.64
	2020	0.9	9.6	59.1	30.4	1926	3.19	0.63
	2019	1.0	10.5	58.7	29.8	1923	3.17	0.64
The compassionate treatment of patients	2021	0.6	2.2	42.7	54.4	1756	3.51	0.58
	2020	0.3	1.7	44.5	53.6	1928	3.51	0.55
	2019	0.2	1.7	45.5	52.6	1923	3.50	0.54
Respect for the privacy and dignity of patients	2021	0.5	1.5	44.1	53.9	1754	3.51	0.56
	2020	0.2	1.7	43.1	55.0	1929	3.53	0.54
	2019	0.3	1.3	45.6	52.9	1922	3.51	0.54
The value of honesty and integrity in all professional interactions	2021	0.7	3.0	46.3	50.0	1756	3.46	0.59
	2020	0.5	3.0	47.1	49.4	1928	3.45	0.58
	2019	0.7	2.7	48.6	48.0	1920	3.44	0.58

		Ratings (%)				Count	Mean	Standard Deviation
		Strongly Disagree	Disagree	Agree	Strongly Agree			
The principles that govern ethical decision-making	2021	0.9	2.8	51.9	44.4	1755	3.40	0.59
	2020	0.4	3.1	52.2	44.4	1928	3.41	0.57
	2019	0.4	2.7	54.7	42.3	1921	3.39	0.56
The major ethical dilemmas that arise in medicine	2021	0.7	5.5	53.4	40.3	1750	3.33	0.61
	2020	0.3	4.3	54.8	40.6	1925	3.36	0.58
	2019	0.5	3.4	56.0	40.0	1921	3.36	0.57
The recognition and acceptance of limitations in one's own knowledge and skills	2021	0.7	4.6	50.5	44.2	1755	3.38	0.61
	2020	0.8	5.0	52.7	41.5	1923	3.35	0.61
	2019	0.8	4.4	54.9	40.0	1921	3.34	0.60

Clinical Decision-Making and Clinical Care

13 Please indicate whether you agree or disagree with the following statements.

Response options: Strongly Disagree; Disagree; Agree; Strongly Agree. For the purposes of analysis, the response options were coded from 1 to 4, respectively.

Note: Percentages (ratings) add to 100 across rows, not columns.

		Ratings (%)				Count	Mean	Standard Deviation
		Strongly Disagree	Disagree	Agree	Strongly Agree			
I was appropriately trained to care for individuals from diverse backgrounds	2021	2.1	12.7	56.8	28.5	1756	3.12	0.69
	2020	0.8	10.1	54.2	34.9	1929	3.23	0.66
	2019	1.2	7.7	57.4	33.7	1927	3.24	0.64
Overall my clinical experiences highlighted the need to understand and incorporate diversity and culture in delivering patient care	2021	1.3	9.5	54.0	35.2	1755	3.23	0.67
	2020	0.8	7.1	54.4	37.7	1925	3.29	0.63
	2019	0.9	6.2	56.9	36.1	1927	3.28	0.62
I feel prepared to provide culturally competent care	2021	1.3	17.8	56.2	24.7	1755	3.04	0.69
	2020	1.3	13.2	56.4	29.0	1928	3.13	0.68
	2019	1.0	11.6	59.9	27.5	1925	3.14	0.64
I feel prepared to integrate the social determinants of health into an appropriate management plan	2021	0.9	6.4	55.6	37.0	1754	3.29	0.62
	2020	0.4	4.7	55.0	39.9	1927	3.34	0.59
	2019	0.4	4.8	57.5	37.3	1921	3.32	0.58
I feel appropriately prepared to advocate for my future patients	2021	0.6	4.3	54.6	40.5	1752	3.35	0.59
	2020	0.4	3.7	54.9	40.9	1922	3.36	0.57
	2019	0.4	3.4	54.2	42.0	1920	3.38	0.57
I feel appropriately prepared to advocate for the communities of my future patients to better meet their health needs	2021	0.7	9.0	58.2	32.1	1747	3.22	0.63
	2020	0.8	8.5	56.6	34.0	1921	3.24	0.63
	2019	0.6	7.6	58.7	33.1	1922	3.24	0.61

Please indicate whether you agree or disagree with the following statements. When presented with a variety of patients I am confident that I have the knowledge and skills to:

Response options: Strongly Disagree; Disagree; Agree; Strongly Agree. For the purposes of analysis, the response options were coded from 1 to 4, respectively.

Note: Percentages (ratings) add to 100 across rows, not columns.

		Ratings (%)				Count	Mean	Standard Deviation
		Strongly Disagree	Disagree	Agree	Strongly Agree			
Take a patient's history	2021	0.1	0.2	20.5	79.2	1758	3.79	0.42
	2020	0.0	0.2	20.8	79.1	1930	3.79	0.41
	2019	0.0	0.1	20.7	79.2	1928	3.79	0.41
Perform a physical examination	2021	0.1	1.4	34.1	64.4	1757	3.63	0.52
	2020	0.1	0.9	33.0	66.0	1926	3.65	0.50
	2019	0.0	0.6	32.3	67.1	1926	3.66	0.49
Develop an appropriate differential diagnosis	2021	0.2	1.6	48.4	49.8	1756	3.48	0.54
	2020	0.2	1.9	49.4	48.6	1928	3.46	0.54
	2019	0.1	1.2	48.1	50.6	1927	3.49	0.53
Reason clinically	2021	0.2	1.3	48.1	50.4	1754	3.49	0.54
	2020	0.1	1.2	46.8	51.9	1930	3.50	0.53
	2019	0.0	0.8	46.9	52.3	1922	3.52	0.52
Interpret imaging results for common health problems	2021	0.7	9.4	59.6	30.3	1754	3.19	0.62
	2020	0.5	11.6	58.8	29.1	1929	3.17	0.63
	2019	0.5	8.8	57.7	33.1	1927	3.23	0.62
Interpret laboratory results	2021	0.1	1.8	54.5	43.6	1755	3.42	0.53
	2020	0.2	1.8	54.1	43.9	1928	3.42	0.54
	2019	0.1	1.0	54.1	44.8	1925	3.44	0.52
Develop an appropriate management plan	2021	0.2	3.7	65.0	31.1	1757	3.27	0.53
	2020	0.2	3.4	65.0	31.4	1925	3.28	0.53
	2019	0.1	2.8	63.8	33.3	1927	3.30	0.52
Care for patients in a hospital setting	2021	0.2	2.9	53.3	43.6	1757	3.40	0.56
	2020	0.3	3.1	54.9	41.7	1930	3.38	0.56
	2019	0.1	2.3	54.4	43.2	1921	3.41	0.54
Care for patients in an ambulatory setting	2021	0.2	2.4	55.8	41.6	1756	3.39	0.54
	2020	0.3	2.4	55.8	41.5	1926	3.39	0.55
	2019	0.1	3.1	54.7	42.1	1922	3.39	0.55
Recognize medical errors and their causes	2021	0.3	8.6	62.6	28.5	1752	3.19	0.59

		Ratings (%)				Count	Mean	Standard Deviation
		Strongly Disagree	Disagree	Agree	Strongly Agree			
	2020	0.4	8.8	64.9	25.9	1927	3.16	0.58
	2019	0.4	9.0	62.6	28.0	1923	3.18	0.60
Assess the quality of care	2021	0.4	10.3	60.0	29.3	1753	3.18	0.62
	2020	0.5	11.0	60.9	27.7	1924	3.16	0.62
	2019	0.4	10.2	61.7	27.7	1920	3.17	0.61

15 Evidence-Informed Medicine

Please indicate whether you agree or disagree with the following statements. I am confident that I have the knowledge and skills to:

Response options: Strongly Disagree; Disagree; Agree; Strongly Agree. For the purposes of analysis, the response options were coded from 1 to 4, respectively.

Note: Percentages (ratings) add to 100 across rows, not columns.

		Ratings (%)				Count	Mean	Standard Deviation
		Strongly Disagree	Disagree	Agree	Strongly Agree			
Incorporate evidence-informed decision-making into patient care	2021	0.3	2.7	59.1	37.9	1751	3.34	0.55
	2020	0.4	3.2	59.3	37.1	1918	3.33	0.56
	2019	0.1	3.1	60.3	36.5	1911	3.33	0.54
Access evidence-informed treatment guidelines	2021	0.2	3.7	50.7	45.4	1757	3.41	0.57
	2020	0.3	2.4	53.3	43.9	1927	3.41	0.56
	2019	0.2	2.3	55.6	41.9	1923	3.39	0.54

16 Population-Based Medicine

Do you believe that your instruction in each of the following areas was inadequate, appropriate, or excessive?

Response options: Inadequate; Appropriate; Excessive.

Note: Percentages (ratings) add to 100 across rows, not columns.

		Ratings (%)			Count
		Inadequate	Appropriate	Excessive	
Health promotion and disease prevention	2021	8.7	88.7	2.6	1756
	2020	7.9	88.4	3.7	1930
	2019	6.8	90.0	3.3	1922
Screening for diseases	2021	4.8	94.5	0.6	1756
	2020	4.0	95.1	0.8	1927
	2019	3.6	95.3	1.1	1921
Infectious disease prevention	2021	10.4	88.5	1.1	1754
	2020	11.6	87.4	1.0	1924
	2019	9.8	88.3	1.8	1922
Risk assessment and counselling	2021	12.6	86.6	0.7	1750
	2020	13.4	85.2	1.5	1926
	2019	10.6	87.9	1.5	1917
Health determinants including social determinants	2021	9.1	79.3	11.6	1752
	2020	6.8	78.0	15.1	1916
	2019	6.3	79.8	13.9	1912

17 Other Medical Topics

Do you believe that your instruction in each of the following areas was inadequate, appropriate, or excessive?

Response options: Inadequate; Appropriate; Excessive.

Note: Percentages (ratings) add to 100 across rows, not columns.

		Ratings (%)			Count
		Inadequate	Appropriate	Excessive	
Long-term healthcare	2021	25.9	73.8	0.3	1756
	2020	22.3	76.7	1.0	1924
	2019	18.6	80.1	1.2	1923
Continuity of care	2021	12.0	87.1	0.9	1754
	2020	10.4	88.7	1.0	1922
	2019	9.1	89.5	1.4	1925
Pain management	2021	22.0	76.8	1.2	1752
	2020	22.6	75.9	1.5	1927
	2019	19.5	78.7	1.8	1925
Health policy	2021	29.3	68.7	2.0	1749
	2020	31.2	66.2	2.6	1927
	2019	29.6	67.3	3.1	1919
Health care systems	2021	26.4	72.0	1.7	1748
	2020	27.4	70.3	2.3	1928
	2019	25.9	71.4	2.8	1922
Law & medicine	2021	33.4	64.9	1.7	1751
	2020	32.3	65.7	2.0	1928
	2019	28.4	69.4	2.2	1925
Behavioural sciences	2021	14.5	83.9	1.6	1746
	2020	15.2	82.9	1.8	1922
	2019	15.6	82.5	1.9	1923
Complementary and alternative medicine	2021	33.1	62.2	4.6	1750
	2020	29.7	64.0	6.3	1924
	2019	31.1	62.6	6.3	1925
Human sexuality	2021	23.1	73.0	3.9	1751
	2020	24.8	71.8	3.4	1924
	2019	22.2	73.7	4.1	1924
End-of-life/palliative care	2021	15.6	83.4	1.0	1753
	2020	16.1	82.7	1.2	1925
	2019	13.3	85.5	1.2	1923
Family/domestic violence	2021	24.6	74.3	1.1	1754
	2020	26.7	72.3	1.0	1926
	2019	19.9	78.8	1.3	1925

		Ratings (%)			Count
		Inadequate	Appropriate	Excessive	
Drug and alcohol abuse	2021	13.2	85.8	1.0	1752
	2020	12.5	86.3	1.2	1925
	2019	9.6	89.3	1.1	1925
Ethics/Humanism	2021	9.0	87.4	3.7	1749
	2020	7.4	87.9	4.7	1924
	2019	5.8	88.8	5.4	1922

General Skills

18 Communication Skills

Please indicate your level of agreement with the following statements. I am confident that I have the appropriate knowledge and skills to:

Response options: Strongly Disagree; Disagree; Agree; Strongly Agree. For the purposes of analysis, the response options were coded from 1 to 4, respectively.

Note: Percentages (ratings) add to 100 across rows, not columns.

		Ratings (%)				Count	Mean	Standard Deviation
		Strongly Disagree	Disagree	Agree	Strongly Agree			
Communicate effectively with patients and their families	2021	0.1	0.4	33.6	65.9	1758	3.65	0.49
	2020	0.1	0.2	34.7	65.1	1930	3.65	0.48
	2019	0.0	0.1	36.4	63.5	1924	3.63	0.48
Communicate with other physicians	2021	0.1	1.3	42.3	56.4	1755	3.55	0.53
	2020	0.2	1.2	42.6	56.0	1929	3.54	0.53
	2019	0.0	0.7	45.3	54.0	1923	3.53	0.51
Communicate with other health professionals	2021	0.1	0.9	40.7	58.3	1746	3.57	0.52
	2020	0.2	0.8	41.3	57.8	1916	3.57	0.52
	2019	0.1	0.3	43.9	55.8	1917	3.55	0.51
Provide safe-sex counselling to patients	2021	0.4	5.5	54.0	40.0	1754	3.34	0.60
	2020	0.4	5.3	53.3	40.9	1927	3.35	0.60
	2019	0.1	4.3	55.9	39.7	1923	3.35	0.57
Discuss options with a patient and/or family members who request unnecessary/unwarranted tests or procedures	2021	0.3	5.9	59.7	34.1	1750	3.28	0.58
	2020	0.3	6.1	58.1	35.5	1923	3.29	0.59
	2019	0.1	5.0	60.7	34.2	1920	3.29	0.56
Discuss the health practices of a patient using alternate therapies	2021	1.1	17.7	55.2	26.1	1738	3.06	0.69
	2020	1.1	17.8	54.1	27.0	1909	3.07	0.70
	2019	0.7	17.5	55.6	26.3	1913	3.07	0.68

19 Information Technology Skills

Please indicate your level of agreement with the following statement. I am confident that I have the appropriate knowledge and skills to:

Response options: Strongly Disagree; Disagree; Agree; Strongly Agree. For the purposes of analysis, the response options were coded from 1 to 4, respectively.

Note: Percentages (ratings) add to 100 across rows, not columns.

		Ratings (%)				Count	Mean	Standard Deviation
		Strongly Disagree	Disagree	Agree	Strongly Agree			
Use technology to access information at the time of a patient encounter if needed	2021	5.6	1.9	47.3	45.2	1752	3.32	0.77
	2020	6.4	2.0	48.5	43.0	1922	3.28	0.79
	2019	7.0	1.8	49.7	41.5	1913	3.26	0.80

Preparedness for Residency

20 | I am confident that I have developed the clinical skills required to begin a residency program.

Response options: Strongly Disagree; Disagree; Agree; Strongly Agree. For the purposes of analysis, the response options were coded from 1 to 4, respectively.

	2019 Count	2019 Percent	2020 Count	2020 Percent	2021 Count	2021 Percent
Strongly Disagree	48	2.5	46	2.4	35	2.0
Disagree	42	2.2	49	2.5	53	3.0
Agree	1101	57.1	1081	56.0	1007	57.2
Strongly Agree	738	38.3	754	39.1	664	37.7

Respondents: 1759
Mean: 3.31
Standard Deviation: 0.63

Research

21 | I participated in a research project or other scholarly activity with a faculty member.

Response options: Yes; No, I was not interested; No, the opportunity was not available; No, other.

	2019 Count	2019 Percent	2020 Count	2020 Percent	2021 Count	2021 Percent
Yes	1407	73.1	1425	73.9	1355	77.0
No, I was not interested	349	18.1	320	16.6	249	14.1
No, the opportunity was not available	52	2.7	78	4.0	60	3.4
No, other	117	6.1	106	5.5	96	5.5

Respondents: 1760

School Administration, Student Affairs and Student Services

22a Please indicate your level of satisfaction with the following.

Office of the Associate Dean for Educational Programs/Medical Education

Response options: Very Dissatisfied; Dissatisfied; Satisfied; Very Satisfied; Did not use. For the purposes of analysis, "Very Dissatisfied" to "Very Satisfied" were coded from 1 to 4, respectively.

Note: Percentages (ratings) add to 100 across rows, not columns.

		Ratings (%)				Count	Mean	Standard Deviation
		Very Dissatisfied	Dissatisfied	Satisfied	Very Satisfied			
Accessibility	2021	2.4	8.4	59.2	30.0	1329	3.17	0.67
	2020	2.3	6.6	57.0	34.1	1416	3.23	0.67
	2019	1.7	5.8	60.6	31.8	1395	3.23	0.63

22b Please indicate your level of satisfaction with the following.

Office of the Associate Dean for Educational Programs/Medical Education

Note: This table presents the overall total number of respondents who provided a rating from "Very Dissatisfied" to "Very Satisfied", as well as those who responded "Did not use", or did not respond to the question. The total of these three categories adds up to the total number of respondents to the 2021 AFMC GQ.

	Rated (Very Dissatisfied to Very Satisfied)	Did not use	No Response	Total Respondents (2021 AFMC GQ)
Accessibility	1329	420	12	1761

23a Please indicate your level of satisfaction with the following.

Office of the Associate Dean for Educational Programs/Medical Education

Response options: Very Dissatisfied; Dissatisfied; Satisfied; Very Satisfied; Don't know. For the purposes of analysis, "Very Dissatisfied" to "Very Satisfied" were coded from 1 to 4, respectively.

Note: Percentages (ratings) add to 100 across rows, not columns.

		Ratings (%)				Count	Mean	Standard Deviation
		Very Dissatisfied	Dissatisfied	Satisfied	Very Satisfied			
Responsiveness to student problems	2021	7.1	21.2	46.7	25.0	1549	2.90	0.86
	2020	6.2	16.5	47.9	29.4	1677	3.00	0.84
	2019	4.6	17.2	51.3	27.0	1644	3.01	0.79
Includes students on key medical school committees and working groups	2021	3.0	6.9	56.3	33.8	1505	3.21	0.69
	2020	1.9	5.3	54.7	38.0	1646	3.29	0.65
	2019	0.9	4.3	57.0	37.7	1601	3.32	0.60

23b Please indicate your level of satisfaction with the following.

Office of the Associate Dean for Educational Programs/Medical Education

Note: This table presents the overall total number of respondents who provided a rating from "Very Dissatisfied" to "Very Satisfied", as well as those who responded "Don't know", or did not respond to the question. The total of these three categories adds up to the total number of respondents to the 2021 AFMC GQ.

	Rated (Very Dissatisfied to Very Satisfied)	Don't know	No Response	Total Respondents (2021 AFMC GQ)
Responsiveness to student problems	1549	202	10	1761
Includes students on key medical school committees and working groups	1505	247	9	1761

24a Please indicate your level of satisfaction with the following.

Office of Student Affairs/Student support services team

Response options: Very Dissatisfied; Dissatisfied; Satisfied; Very Satisfied; Did not use. For the purposes of analysis, "Very Dissatisfied" to "Very Satisfied" were coded from 1 to 4, respectively.

Note: Percentages (ratings) add to 100 across rows, not columns.

		Ratings (%)				Count	Mean	Standard Deviation
		Very Dissatisfied	Dissatisfied	Satisfied	Very Satisfied			
Accessibility	2021	1.6	5.1	44.3	49.0	1286	3.41	0.66
	2020	1.2	4.3	45.2	49.2	1397	3.43	0.64
	2019	0.9	3.9	46.9	48.4	1468	3.43	0.61
Academic advising/counselling	2021	2.1	7.9	43.3	46.8	1401	3.35	0.72
	2020	2.0	7.5	45.6	45.0	1516	3.34	0.70
	2019	2.9	9.6	47.2	40.3	1525	3.25	0.74
Financial aid administrative services	2021	1.8	7.2	51.0	40.0	1135	3.29	0.68
	2020	2.2	7.2	53.9	36.7	1182	3.25	0.68
	2019	2.1	8.2	53.5	36.2	1234	3.24	0.69
Overall educational debt management counselling	2021	3.3	11.7	53.3	31.7	1067	3.13	0.74
	2020	2.7	16.4	53.4	27.6	1130	3.06	0.74
	2019	2.4	14.7	53.4	29.5	1193	3.10	0.73

24b Please indicate your level of satisfaction with the following.

Office of Student Affairs/Student support services team

Note: This table presents the overall total number of respondents who provided a rating from "Very Dissatisfied" to "Very Satisfied", as well as those who responded "Did not use", or did not respond to the question. The total of these three categories adds up to the total number of respondents to the 2021 AFMC GQ.

	Rated (Very Dissatisfied to Very Satisfied)	Did not use	No Response	Total Respondents (2021 AFMC GQ)
Accessibility	1286	466	9	1761
Academic advising/counselling	1401	350	10	1761
Financial aid administrative services	1135	613	13	1761
Overall educational debt management counselling	1067	664	30	1761

25a Please indicate your level of satisfaction with the following.

Office of Student Affairs/Student support services team

Response options: Very Dissatisfied; Dissatisfied; Satisfied; Very Satisfied; Don't know. For the purposes of analysis, "Very Dissatisfied" to "Very Satisfied" were coded from 1 to 4, respectively.

Note: Percentages (ratings) add to 100 across rows, not columns.

		Ratings (%)				Count	Mean	Standard Deviation
		Very Dissatisfied	Dissatisfied	Satisfied	Very Satisfied			
Responsiveness to student problems	2021	3.9	11.7	46.3	38.2	1522	3.19	0.79
	2020	3.4	10.3	47.4	38.9	1628	3.22	0.76
	2019	2.4	11.3	47.9	38.5	1642	3.22	0.74
Includes students on key medical school committees and working groups	2021	2.1	4.7	52.5	40.6	1397	3.32	0.66
	2020	1.3	3.6	54.2	40.9	1487	3.35	0.62
	2019	0.6	2.8	55.7	40.9	1458	3.37	0.57

25b Please indicate your level of satisfaction with the following.

Office of Student Affairs/Student support services team

Note: This table presents the overall total number of respondents who provided a rating from "Very Dissatisfied" to "Very Satisfied", as well as those who responded "Don't know", or did not respond to the question. The total of these three categories adds up to the total number of respondents to the 2021 AFMC GQ.

	Rated (Very Dissatisfied to Very Satisfied)	Don't know	No Response	Total Respondents (2021 AFMC GQ)
Responsiveness to student problems	1522	221	18	1761
Includes students on key medical school committees and working groups	1397	340	24	1761

26a Please indicate your level of satisfaction with the following.

Office of Student Affairs/Student support services team

Response options: Very Dissatisfied; Dissatisfied; Satisfied; Very Satisfied; No opinion. For the purposes of analysis, "Very Dissatisfied" to "Very Satisfied" were coded from 1 to 4, respectively.

Note: Percentages (ratings) add to 100 across rows, not columns.

		Ratings (%)				Count	Mean	Standard Deviation
		Very Dissatisfied	Dissatisfied	Satisfied	Very Satisfied			
Personal counselling	2021	3.5	7.4	44.6	44.5	1194	3.30	0.75
	2020	2.8	8.0	44.0	45.3	1266	3.32	0.74
	2019	2.6	7.8	45.6	44.0	1240	3.31	0.72

26b Please indicate your level of satisfaction with the following.

Office of Student Affairs/Student support services team

Note: This table presents the overall total number of respondents who provided a rating from "Very Dissatisfied" to "Very Satisfied", as well as those who responded "No opinion", or did not respond to the question. The total of these three categories adds up to the total number of respondents to the 2021 AFMC GQ.

	Rated (Very Dissatisfied to Very Satisfied)	No opinion	No Response	Total Respondents (2021 AFMC GQ)
Personal counselling	1194	559	8	1761

27a How satisfied are you with programs/activities that promote effective stress management, a balanced lifestyle and overall wellbeing?

Response options: Very Dissatisfied; Dissatisfied; Satisfied; Very Satisfied, No opinion. For the purposes of analysis, "Very Dissatisfied" to "Very Satisfied" were coded from 1 to 4, respectively.

		Ratings (%)				Count	Mean	Standard Deviation
		Very Dissatisfied	Dissatisfied	Satisfied	Very Satisfied			
Wellness	2021	5.4	19.8	55.9	18.9	1614	2.88	0.77
	2020	4.5	20.2	56.7	18.5	1808	2.89	0.75
	2019	4.5	20.6	55.3	19.5	1783	2.90	0.76

27b How satisfied are you with programs/activities that promote effective stress management, a balanced lifestyle and overall wellbeing?

Note: This table presents the overall total number of respondents who provided a rating from "Very Dissatisfied" to "Very Satisfied", as well as those who responded "No opinion", or did not respond to the question. The total of these three categories adds up to the total number of respondents to the 2021 AFMC GQ.

	2021 Count	2021 Percent
Rated (Very Dissatisfied to Very Satisfied)	1614	99.8
No opinion	0	0.0
No Response	4	0.2
Respondents: 1618		

28 Please indicate your level of satisfaction with the following:

Career Planning Services

Response options: Very Dissatisfied; Dissatisfied; Satisfied; Very Satisfied. For the purposes of analysis, "Very Dissatisfied" to "Very Satisfied" were coded from 1 to 4, respectively.

Note: Percentages (ratings) add to 100 across rows, not columns.

		Ratings (%)				Count	Mean	Standard Deviation
		Very Dissatisfied	Dissatisfied	Satisfied	Very Satisfied			
Career planning services	2021	2.7	13.7	65.4	18.1	1753	2.99	0.65
	2020	3.0	16.3	65.8	14.9	1928	2.93	0.65
	2019	4.2	18.1	65.1	12.6	1924	2.86	0.67
Information about specialties	2021	2.5	13.5	65.7	18.4	1750	3.00	0.65
	2020	2.4	16.7	65.6	15.2	1926	2.94	0.64
	2019	3.7	17.9	64.1	14.2	1924	2.89	0.68
Information about the changing workforce environment	2021	4.4	30.9	55.2	9.4	1742	2.70	0.70
	2020	4.2	33.1	55.2	7.5	1921	2.66	0.68
	2019	5.8	32.5	52.8	8.9	1920	2.65	0.72
Guidance when choosing electives	2021	6.0	24.6	57.0	12.4	1742	2.76	0.74
	2020	7.7	28.9	53.9	9.4	1926	2.65	0.76
	2019	8.1	31.4	51.1	9.4	1917	2.62	0.77

29a Please indicate your level of satisfaction with the following:

Student Health

Response options: Very Dissatisfied; Dissatisfied; Satisfied; Very Satisfied, No opinion. For the purposes of analysis, "Very Dissatisfied" to "Very Satisfied" were coded from 1 to 4, respectively.

Note: Percentages (ratings) add to 100 across rows, not columns.

		Ratings (%)				Count	Mean	Standard Deviation
		Very Dissatisfied	Dissatisfied	Satisfied	Very Satisfied			
Student health services	2021	2.1	7.9	60.4	29.6	1181	3.18	0.66
	2020	2.5	8.9	56.1	32.5	1389	3.19	0.69
	2019	1.3	7.8	57.5	33.4	1410	3.23	0.64
Student mental health services	2021	4.2	15.2	49.7	30.9	1062	3.07	0.79
	2020	3.3	13.5	53.4	29.8	1247	3.10	0.74
	2019	2.2	11.9	54.8	31.2	1156	3.15	0.70

29b Please indicate your level of satisfaction with the following:

Student Health

Note: This table presents the overall total number of respondents who provided a rating from "Very Dissatisfied" to "Very Satisfied", as well as those who responded "No opinion", or did not respond to the question. The total of these three categories adds up to the total number of respondents to the 2021 AFMC GQ.

	Rated (Very Dissatisfied to Very Satisfied)	No opinion	No Response	Total Respondents (2021 AFMC GQ)
Student health services	1181	547	33	1761
Student mental health services	1062	687	12	1761

30 Please indicate your level of satisfaction with the following:

Student Health

Response options: Very Dissatisfied; Dissatisfied; Satisfied; Very Satisfied. For the purposes of analysis, "Very Dissatisfied" to "Very Satisfied" were coded from 1 to 4, respectively.

Note: Percentages (ratings) add to 100 across rows, not columns.

		Ratings (%)				Count	Mean	Standard Deviation
		Very Dissatisfied	Dissatisfied	Satisfied	Very Satisfied			
Awareness of and access to student disability insurance	2021	2.7	13.7	72.7	11.0	1727	2.92	0.59
	2020	2.6	15.6	72.0	9.8	1907	2.89	0.59
	2019	1.6	12.4	74.2	11.8	1910	2.96	0.55
Education about exposure to and prevention of infectious diseases (e.g., needle stick injury procedures)	2021	1.7	9.3	71.7	17.2	1726	3.04	0.58
	2020	1.2	10.3	71.8	16.7	1901	3.04	0.56
	2019	1.3	8.6	72.3	17.9	1914	3.07	0.56

31 I know what to do if I am exposed to an infectious or environmental hazard like a needle stick injury.

Response options: Yes; No

	2019 Count	2019 Percent	2020 Count	2020 Percent	2021 Count	2021 Percent
Yes	1755	92.3	1752	91.3	1559	89.2
No	147	7.7	167	8.7	188	10.8

Respondents: 1747

32a Please indicate your level of satisfaction with the following:

Other Student Services

Response options: Very Dissatisfied; Dissatisfied; Satisfied; Very Satisfied; Did not use. For the purposes of analysis, "Very Dissatisfied" to "Very Satisfied" were coded from 1 to 4, respectively.

Note: Percentages (ratings) add to 100 across rows, not columns.

		Ratings (%)				Count	Mean	Standard Deviation
		Very Dissatisfied	Dissatisfied	Satisfied	Very Satisfied			
Student study space	2021	3.0	10.7	48.1	38.1	1658	3.21	0.75
	2020	2.2	9.5	47.3	40.9	1857	3.27	0.72
	2019	1.8	8.3	46.3	43.6	1859	3.32	0.70
Student relaxation space	2021	4.0	16.2	51.5	28.3	1594	3.04	0.78
	2020	3.3	16.0	50.1	30.6	1782	3.08	0.77
	2019	2.9	15.1	49.1	32.9	1780	3.12	0.76
Library	2021	2.7	7.2	51.3	38.8	1657	3.26	0.71
	2020	2.4	7.7	50.8	39.1	1839	3.27	0.70
	2019	2.1	7.3	49.0	41.6	1819	3.30	0.70
Access to computers	2021	2.9	7.1	55.7	34.3	1554	3.21	0.70
	2020	1.6	6.7	53.2	38.5	1726	3.29	0.66
	2019	0.6	6.2	52.1	41.1	1751	3.34	0.62
Access to internet	2021	2.0	5.6	47.7	44.8	1729	3.35	0.68
	2020	0.9	4.3	46.7	48.1	1905	3.42	0.62
	2019	1.0	5.2	45.8	47.9	1918	3.41	0.64

32b Please indicate your level of satisfaction with the following:

Other Student Services

Note: This table presents the overall total number of respondents who provided a rating from "Very Dissatisfied" to "Very Satisfied", as well as those who responded "Did not use", or did not respond to the question. The total of these three categories adds up to the total number of respondents to the 2021 AFMC GQ.

	Rated (Very Dissatisfied to Very Satisfied)	Did not use	No Response	Total Respondents (2021 AFMC GQ)
Student study space	1658	99	4	1761
Student relaxation space	1594	161	6	1761
Library	1657	99	5	1761
Access to computers	1554	202	5	1761
Access to internet	1729	24	8	1761

Mistreatment

For reporting purposes, the two questions regarding school policies and procedures related to possible mistreatment of medical students are included in this section. Please note that these questions did not appear together with the questions about behaviours experienced during medical school (the results of which form the rest of this chapter). The questions relating to “behaviours experienced” did not use the word “mistreatment” to avoid imparting bias to responses.

The questions in this section of the GQ may be particularly sensitive for students and schools. To protect student anonymity, the results of the series of questions asking about the frequency of the behaviours experienced are reported at an aggregate level only.

33 Are you aware that your school has policies regarding the mistreatment of medical students?

Response options: Yes; No

	2019 Count	2019 Percent	2020 Count	2020 Percent	2021 Count	2021 Percent
Yes	1827	94.9	1868	96.8	1692	96.3
No	99	5.1	62	3.2	65	3.7

Respondents: 1757

34 Do you know the procedure at your school for reporting the mistreatment of medical students?

Response options: Yes; No

	2019 Count	2019 Percent	2020 Count	2020 Percent	2021 Count	2021 Percent
Yes	1608	83.5	1640	85.0	1500	85.5
No	317	16.5	290	15.0	255	14.5

Respondents: 1755

35a

For each of the following behaviours, please indicate the frequency you personally experienced that behaviour during medical school. Include in your response any behaviours performed by faculty, nurses, residents/interns, other institution employees or staff, and other students. Please do not include behaviours performed by patients and their families. During medical school, how frequently have you been:

Response options: Never; Once; Occasionally (2-4 times); Frequently (5 or more times). For the purposes of analysis, "Never" to "Frequently" were coded from 1 to 4, respectively.

		Ratings (%)				Count	Mean	Standard Deviation
		Never	Once	Occasionally (2-4 times)	Frequently (5 or more times)			
Publicly humiliated	2021	57.7	17.6	22.3	2.3	1751	1.69	0.89
	2020	56.9	17.8	22.7	2.5	1926	1.71	0.90
	2019	58.7	18.2	20.0	3.1	1923	1.67	0.90
Threatened with physical harm	2021	98.0	1.6	0.3	0.1	1754	1.02	0.18
	2020	97.9	1.7	0.4	0.0	1926	1.03	0.18
	2019	97.6	1.6	0.6	0.2	1924	1.03	0.24
Physically harmed	2021	99.0	0.7	0.2	0.1	1753	1.01	0.14
	2020	98.6	1.1	0.2	0.0	1925	1.02	0.14
	2019	97.8	1.7	0.5	0.1	1923	1.03	0.21
Required to perform personal services	2021	89.8	5.6	4.2	0.5	1754	1.15	0.49
	2020	87.4	4.9	7.1	0.6	1927	1.21	0.58
	2019	87.4	6.1	5.5	0.9	1924	1.20	0.57
Subjected to unwanted sexual advances	2021	93.7	3.6	2.2	0.6	1754	1.10	0.41
	2020	93.1	3.8	2.5	0.6	1924	1.11	0.42
	2019	92.6	3.8	3.2	0.4	1923	1.11	0.44
Asked to exchange sexual favours for grades or other rewards	2021	99.6	0.2	0.1	0.1	1754	1.01	0.11
	2020	99.8	0.1	0.2	0.0	1924	1.00	0.08
	2019	99.7	0.1	0.1	0.1	1926	1.01	0.11
Denied opportunities for training or rewards based on gender	2021	88.5	3.8	5.5	2.1	1753	1.21	0.64
	2020	89.2	4.1	5.3	1.5	1925	1.19	0.59
	2019	89.1	3.7	5.2	1.9	1925	1.20	0.62
Subjected to offensive sexist remarks/names	2021	73.1	10.2	13.3	3.4	1754	1.47	0.85
	2020	74.1	8.9	13.7	3.3	1925	1.46	0.85
	2019	75.2	8.9	12.7	3.2	1927	1.44	0.83
Received lower evaluations/grades based on gender	2021	93.5	3.8	2.2	0.6	1748	1.10	0.41
	2020	94.8	2.8	2.0	0.4	1922	1.08	0.37

		Ratings (%)				Count	Mean	Standard Deviation
		Never	Once	Occasionally (2-4 times)	Frequently (5 or more times)			
	2019	94.4	2.8	2.3	0.5	1919	1.09	0.40
Denied opportunities for training or rewards based on race or ethnicity	2021	96.1	1.5	1.8	0.6	1751	1.07	0.37
	2020	96.8	1.5	1.2	0.5	1922	1.05	0.32
	2019	96.3	1.1	1.8	0.8	1923	1.07	0.39
Subjected to racially or ethnically offensive remarks/names	2021	85.5	5.5	7.0	1.9	1749	1.25	0.67
	2020	88.1	4.8	5.8	1.4	1925	1.20	0.60
	2019	88.7	4.0	5.2	2.1	1922	1.21	0.63
Received lower evaluations or grades solely because of race or ethnicity rather than performance	2021	97.0	1.4	1.4	0.2	1749	1.05	0.29
	2020	97.7	1.1	1.1	0.1	1925	1.04	0.25
	2019	97.0	1.3	1.2	0.5	1922	1.05	0.32
Denied opportunities for training or rewards based on sexual orientation	2021	99.4	0.3	0.2	0.1	1749	1.01	0.13
	2020	99.3	0.3	0.4	0.1	1924	1.01	0.15
	2019	99.0	0.3	0.5	0.2	1925	1.02	0.19
Subjected to offensive remarks/names related to sexual orientation	2021	96.6	1.9	1.4	0.1	1747	1.05	0.29
	2020	97.6	1.1	1.1	0.2	1925	1.04	0.27
	2019	97.1	1.0	1.4	0.5	1919	1.05	0.33
Received lower evaluations or grades solely because of sexual orientation rather than performance	2021	99.7	0.2	0.2	0.0	1748	1.01	0.09
	2020	99.5	0.2	0.3	0.1	1922	1.01	0.13
	2019	99.3	0.3	0.3	0.1	1918	1.01	0.16
Subjected to negative or offensive behaviour(s) not described above	2021	84.3	5.6	7.8	2.2	1738	1.28	0.70
	2020	84.5	4.7	8.4	2.4	1908	1.29	0.72
	2019	85.8	3.5	8.6	2.1	1915	1.27	0.71

35b

Percent of respondents who indicated they personally experienced any of the listed behaviours. The data are derived from the response to the question reported in the table above and include all respondents who reported that they had personally experienced, at least "Once," any of the behaviours listed. Those who reported that they "Never" experienced any of the behaviours listed in the table above make up the "No" category in the following table.

Note: This table is derived from the question reported in the previous table and did not appear as a question in the 2021 GQ.

	2019 Count	2019 Percent	2020 Count	2020 Percent	2021 Count	2021 Percent
Yes	1124	58.3	1182	61.3	1075	61.1
No	803	41.7	746	38.7	683	38.9

Respondents: 1758

Financial Information

36a What is the approximate amount of debt (in Canadian dollars) that you have accumulated directly related to your medical studies?

Response options: None - I have no debt directly related to my medical studies (\$0); The approximate amount of my debt is (please specify); I have debt but prefer not to provide the approximate amount; I have debt but do not know the approximate amount."

	2019 Count	2019 Percent	2020 Count	2020 Percent	2021 Count	2021 Percent
Provided amount	1272	66.2	1268	66.0	1179	67.4
Preferred not to provide	248	12.9	236	12.3	185	10.6
Did not know	130	6.8	160	8.3	129	7.4
None (\$0)	272	14.2	256	13.3	255	14.6

Respondents: 1748

36b What is the approximate amount of debt (in Canadian dollars) that you have accumulated directly related to your medical studies?

Note: This question was only asked of respondents who provided an amount in the previous table. Calculation of measures of central tendency and dispersion include only those who provided an amount and were based on the amount provided, not the categories created for reporting. The provided values were rounded down to the nearest thousand.

	2019 Count	2019 Percent	2020 Count	2020 Percent	2021 Count	2021 Percent
<20,000	95	7.5	108	8.5	91	7.7
20,000 to <40,000	129	10.2	135	10.6	133	11.3
40,000 to <60,000	134	10.6	142	11.2	187	15.9
60,000 to <80,000	117	9.2	112	8.8	152	12.9
80,000 to <100,000	97	7.6	97	7.6	90	7.6
100,000 to <120,000	157	12.4	148	11.7	146	12.4
120,000 to <140,000	115	9.1	98	7.7	97	8.2
140,000 to <160,000	142	11.2	120	9.5	94	8.0
160,000 to <180,000	61	4.8	64	5.0	53	4.5
180,000 to <200,000	48	3.8	45	3.5	24	2.0
200,000 or more	173	13.6	199	15.7	112	9.5

Respondents: 1179

Median: \$80,000

Range (between highest and lowest values): \$999,950

COVID Faculty Response

37 Please indicate your level of satisfaction with the following:

COVID Faculty Response

Response options: Very Dissatisfied; Dissatisfied; Satisfied; Very Satisfied. For the purposes of analysis, "Very Dissatisfied" to "Very Satisfied" were coded from 1 to 4, respectively.

		Ratings (%)				Count	Mean	Standard Deviation
		Very Dissatisfied	Dissatisfied	Satisfied	Very Satisfied			
COVID Faculty Response	2021	6.8	16.1	52.4	24.7	1610	2.95	0.82



THE ASSOCIATION OF FACULTIES
OF MEDICINE OF CANADA

L'ASSOCIATION DES FACULTÉS
DE MÉDECINE DU CANADA