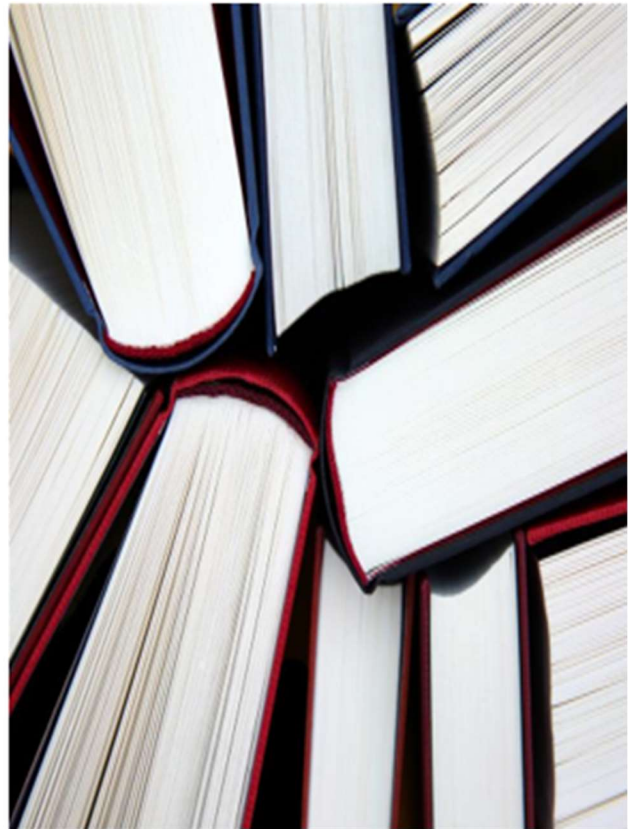


# ADMISSION REQUIREMENTS OF CANADIAN FACULTIES OF MEDICINE

For Admission in 2026





Suggested Citation (APA):

Table X-n. In Admission Requirements of Canadian Faculties of Medicine for Admission in 2026 (pp. X-Y).  
Ottawa, ON: AFMC.

ISSN 2816-5713

Inquiries to:

Data and Information Services

The Association of Faculties of Medicine of Canada

10th Fl-150 Elgin Street Ottawa, Ontario, Canada K2P 1L4

Telephone: 613-730-0687

E-mail: [data@afmc.ca](mailto:data@afmc.ca)

# Table of Contents

---

ABOUT THE AFMC.....	1
INTRODUCTION .....	1
General Application Procedure Overview .....	1
Ontario Medical School Application Service (OMSAS) .....	5
Medical College Admission Test® (MCAT).....	6
AFMC Fee Assistance Programs .....	7
MCAT® Fee Assistance Program for Canadians.....	7
Application Fee Waiver Programs .....	8
Multiple Mini Interviews .....	8
History .....	8
MMI Procedure.....	8
CASPer (Computer-Based Assessment for Sampling Personal Characteristics).....	9
Medical Schools .....	9
CASPer Procedure.....	9
Repeat Applicants.....	10
Applying to Study Medicine Outside Canada .....	10
International Students.....	11
Faculty of Medicine, MEMORIAL UNIVERSITY OF NEWFOUNDLAND .....	13
Faculty of Medicine, DALHOUSIE UNIVERSITY .....	17
Faculté de médecine, UNIVERSITÉ LAVAL .....	21
Faculté de médecine et des sciences de la santé, UNIVERSITÉ DE SHERBROOKE.....	25
Faculté de médecine, UNIVERSITÉ DE MONTRÉAL—Année préparatoire .....	29
Faculté de médecine, UNIVERSITÉ DE MONTRÉAL—Doctorat de 1er cycle en médecine (Programme MD) .....	33
Faculty of Medicine and Health Sciences, MCGILL UNIVERSITY—Med-P Program .....	37
Faculty of Medicine and Health Sciences, MCGILL UNIVERSITY—MD-CM Program.....	41
Faculty of Medicine, UNIVERSITY OF OTTAWA .....	45
Faculté de médecine, UNIVERSITÉ D’OTTAWA .....	49
School of Medicine, QUEEN’S UNIVERSITY.....	53
Temerty Faculty of Medicine, UNIVERSITY OF TORONTO.....	57
Michael G. DeGroot School of Medicine, MCMASTER UNIVERSITY .....	62
Schulich School of Medicine & Dentistry, WESTERN UNIVERSITY.....	66
NORTHERN ONTARIO SCHOOL OF MEDICINE UNIVERSITY .....	70
Max Rady College of Medicine, Rady Faculty of Health Sciences, UNIVERSITY OF MANITOBA.....	74

# Table of Contents

---

College of Medicine, UNIVERSITY OF SASKATCHEWAN .....	79
Faculty of Medicine & Dentistry, UNIVERSITY OF ALBERTA .....	83
Cumming School of Medicine, UNIVERSITY OF CALGARY .....	87
Faculty of Medicine, UNIVERSITY OF BRITISH COLUMBIA.....	90

## ABOUT THE AFMC

---

Founded in 1943, the Association of Faculties of Medicine of Canada (AFMC) represents Canada's 18 faculties of medicine and is the voice of academic medicine in this country. Our member faculties graduate over 2,800 MDs per year; teach over 11,800 undergraduate medical students; train over 17,500 postgraduate trainees; employ nearly 71,000 full and part-time faculty members; and undertake over 3.5 billion dollars of biomedical and health care research annually.

The AFMC has worked in conjunction with the medical faculties across Canada to produce this book, and has made every effort to ensure the information presented is accurate. However, this information is provided without any warranty or guarantee regarding its accuracy. Always consult the specific medical faculty's website for the most recent and official information.

## INTRODUCTION

---

This publication provides information on admission requirements that covers several academic years. When comparing data from year to year, it should be understood that there is some yearly variability in the context affecting the data. Examples of such context variability include changes to the number of available places, admission requirements, and selection policies for some of the faculties of medicine.

All statistical data come from an annual survey conducted by the AFMC. Individual faculty information is provided by each faculty of medicine as of April 2025 and, therefore, is subject to change. Items such as tuition and seat counts are commonly approved by a host school's governing body over the summer. It is unlikely, but possible, that a faculty may change the testing requirements for applications.

The impact of COVID-19 is still being felt in the academic medicine community. Schools are providing more virtual options for interviews, campus tours, outreach sessions, and community events. School processes for applications and admission are being adapted continuously to respond to demands of COVID protocols in their region.

### **Inclusion of New Faculty of Medicine:**

The Toronto Metropolitan University (TMU) School of Medicine will officially welcome its first cohort of MD students in September 2025. While admission statistics are not yet available, we will include full details on admission requirements for the TMU School of Medicine in next year's *Admissions Requirements Guide* (for entry in 2027).

In the meantime, please refer to TMU's website for the most up-to-date information on their admission requirements:

[www.torontomu.ca/school-of-medicine/programs/md/#admission-requirements](http://www.torontomu.ca/school-of-medicine/programs/md/#admission-requirements)

## General Application Procedure Overview

There are eighteen faculties of medicine in Canada offering programs of study leading to the award of the MD degree, which is the first professional degree in medicine. The faculties of medicine are listed in a geographic sequence from east to west, with no rank ordering whatsoever.

The number of places available is determined by provincial governments based on educational and financial resources, as well as Canada's future physician workforce requirements. Since the universities are under provincial jurisdiction, the majority of seats in a faculty of medicine are allocated to permanent residents of the province in which the university is located.

An applicant must decide to which faculty or faculties of medicine applications will be made. Obviously, the geographic location of a faculty of medicine is of critical importance to a prospective applicant. For those applicants who are free to move to any location where a place may be offered, chances of success in gaining admission may be considerably enhanced. Those who apply to only one faculty of medicine have the smallest chance of being offered admission. As the number of applications increases, so does the chance of being offered a place at a faculty of medicine.

The competition to enter a faculty of medicine is very keen, so it is important that applicants ensure that they fully meet the entry requirements of each faculty of medicine to which they apply. The applicant's type of pre-medical undergraduate degree and institution of study should not deter filing an application, provided that all academic prerequisites are met. Not only should applicants plan to meet all academic prerequisites, but they must also respect all deadline dates. In general, it is not possible to apply after the deadline dates.

Those who wish to maximize their chances of gaining admission to a Canadian faculty of medicine should consider the following:

- Since residence is considered in admissions, include the faculty of medicine located in your home province amongst those to which you apply.
- If you are resident in a province with more than one faculty of medicine (Québec, Ontario, or Alberta), try to apply to more than one faculty of medicine in the province. Remember that some faculties of medicine have more places to allocate than others.

Some applicants are set on attending a particular faculty of medicine and make only one application. In a situation of keen competition, the determination to enter a particular faculty of medicine may be tantamount to excluding oneself from the study of medicine altogether.

The general steps of the application process (summarized in the chart below) are as follows:

**Step 1**, is to meet the specific **entry criteria** defined for the schools to which an application is being made. If the application is accepted, the candidate proceeds to the second step.

*Generally speaking, entry criteria for Canadian medical schools fall into four main categories:*

- **Eligibility requirements:** Most provinces require at least two years of postsecondary education, while Quebec residents applying to a medical school in that province must complete their CÉGEP training. Most schools also request that applicants complete specific basic science courses before entering their program to prepare them for the study of medicine. Since these prerequisites vary among schools, please consult each school's section in this guide for details.
- **Academic performance:** Medical schools look closely at academic performance when evaluating candidates for potential entry into their programs. Selection committees consider grade point average (GPA) to determine whether applicants have the right study habits and intellectual capacity to pursue medical studies. Some also use Medical College Admission Test (MCAT®) results. Once again, please consult each school's section in this guide for details.
- **Autobiographical sketch/essay:** Applicants have the opportunity to differentiate themselves from other candidates by providing the selection committee with an autobiographical sketch/essay that reflects their personality and accomplishments. It should include a list of such

things as volunteer and paid work, research, extra courses, hobbies, sports, awards, scholarships, and other forms of recognition.

- **Reference letters:** Most Canadian medical schools ask for reference letters, which can come from such individuals as community members, faculty members, or previous employers. These letters give selection committees an additional perspective on the type of medical student an applicant might become.

**Step 2**, requires the applicant to complete one or more **interviews**. There are several models of interview in Canadian medical schools: the panel interview, Multiple Mini Interview (MMI), CASPer Interview and *TAAMUS* (*Test d'aptitude à l'apprentissage de la médecine à l'Université de Sherbrooke*).

The panel interview is a traditional format in which the applicant is interviewed in front of a panel of individuals—usually a mix of community members, faculty representatives, medical students, and practising physicians. There are generally three or four evaluators present.

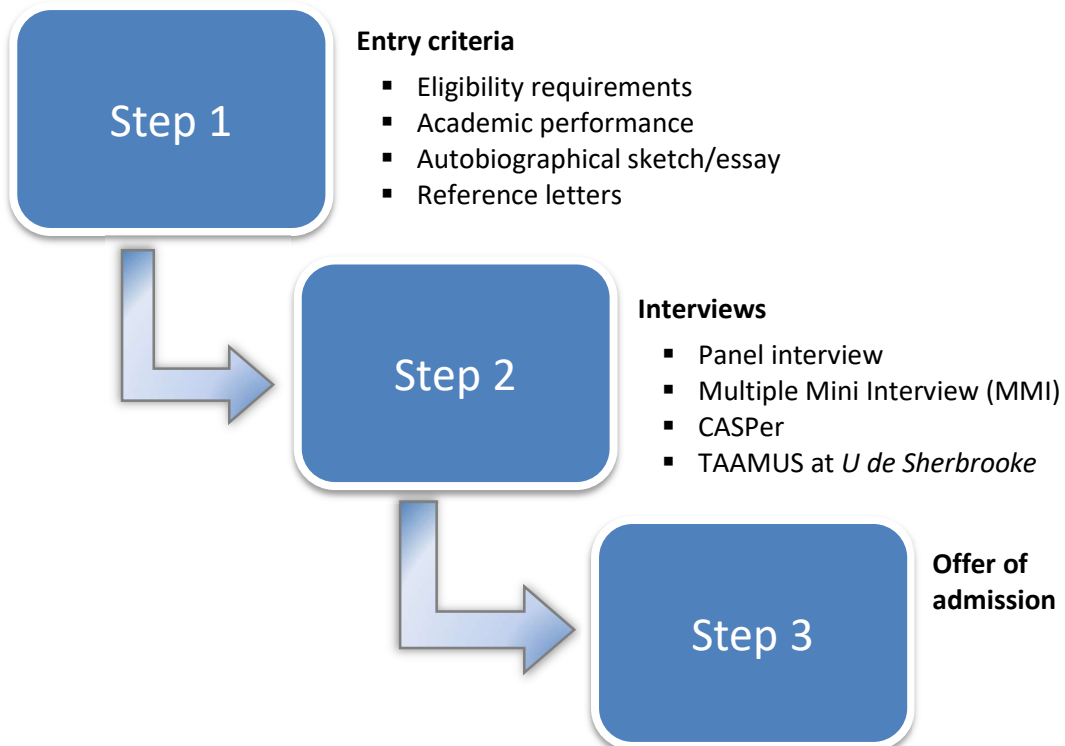
For more details on the MMI and CASPer formats, refer to their respective sections in this guide.

Only *Université de Sherbrooke* administers *TAAMUS*, optionally, if the applicant is a member of the Canadian Forces or a resident of Quebec, the Atlantic Provinces, or Western Canada.

If the school decides that the applicant has the academic and non-academic capabilities to pursue a career in medicine, it proceeds to step 3.

**Step 3**, is for the school to send the applicant an **offer of admission** to its undergraduate medical education program.

## General Application Procedure Overview



## Ontario Medical School Application Service (OMSAS)

The application process for Ontario's seven medical schools is centralized through the OMSAS (Ontario Medical School Application Service), and admission must be made through the [OMSAS website](#). Each medical school is completely independent in reaching its own admission decisions.

The Toronto Metropolitan University (TMU) will be accepting applications for the 2026 academic year. TMU will be added to the guide for the next admission cycle. In the meantime, please refer to TMU's website for the most up-to-date information on their admission requirements:

[www.torontomu.ca/school-of-medicine/programs/md/#admission-requirements](http://www.torontomu.ca/school-of-medicine/programs/md/#admission-requirements)

All applicants are required to pay a service fee plus an institutional fee for each medical school applied to. These fees are non-refundable, and your application will not be forwarded to your universities of choice until you submit full payment to the Ontario Universities' Application Centre (OUAC).

### Fees (in Canadian Funds)

#### **OMSAS Application Service Fee: \$220**

*All applicants are required to pay a base fee of \$220.*

#### **University Fee**

*Each medical school charges a university fee.*

OMSAS collects the university fees and remits them to the universities to cover a portion of the costs associated with the admissions assessment. This fee is payable to the OUAC.

University	Institutional Fee (in Canadian Funds)
McMaster	\$130
Northern (NOSM U)	\$125
Ottawa	\$130
Queen's	\$130
Toronto	\$130
TMU	\$130
Western	\$125

## OMSAS Important Dates<sup>1</sup>

Please note that the OMSAS deadlines listed below are strictly enforced.

<b>July 2025</b>	Application opens
<b>September 15, 2025, at 4:30 pm (ET)</b>	Recommended date to send references to your referees by, to allow enough time for them to submit their reference by the deadline. Check Document Tracking in your application frequently to ensure that all documents are received by their respective deadlines.
<b>October 1, 2025, at 4:30 pm (ET)</b>	Deadline to submit applications. <b>There are no exceptions (this is a strict deadline).</b> <ul style="list-style-type: none"> <li>▪ Deadline for OMSAS to receive transcripts and academic documents.</li> <li>▪ Deadline for OMSAS to receive references.</li> <li>▪ Deadline for OMSAS to receive all payments.</li> </ul>
<b>October 21, 2025</b>	OMSAS must receive your MCAT scores. <b>Note:</b> It takes 2-3 business days for OMSAS to receive your scores after they are released.
<b>May 13, 2026</b>	First round offers of admission are sent out.
<b>June 30, 2026</b>	OMSAS must receive your final transcripts.

For more information:

OMSAS  
 Ontario Universities' Application Centre  
 170 Research Lane  
 Guelph ON N1G 5E2  
 Tel.: 519-823-1940  
 Fax: 519-822-1682  
 E-mail: [omsas@ouac.on.ca](mailto:omsas@ouac.on.ca)  
 Website: [www.ouac.on.ca/omsas](http://www.ouac.on.ca/omsas)

## Medical College Admission Test® (MCAT)

The Medical College Admission Test® (MCAT) is a computer-based standardized examination for prospective medical students in the United States, Australia and Canada. It is designed to assess problem solving, critical thinking, and knowledge of natural, behavioural, and social science concepts and principles prerequisite to the study of medicine. The test is not required by all faculties of medicine, and the extent to which test results are used in admission decisions varies by faculty of medicine. Please see individual school sections for details.

The latest version of the MCAT took effect in April 2015. The exam was updated to reflect changes in medicine and science and to test examinees on not only what they know but how well they use what they know. Please visit [Prepare for the MCAT Exam](#) for more information.

<sup>1</sup> The OMSAS application dates in this guide are based on the previous year's timeline, as updated dates for 2026 admission are not yet available. OMSAS typically updates its website with the new application cycle dates in July. Please check the OMSAS website for final dates when available: [www.ouac.on.ca/guide/omsas-dates/](http://www.ouac.on.ca/guide/omsas-dates/)

The MCAT exam has four test sections:

- Biological and Biochemical Foundations of Living Systems
- Chemical and Physical Foundations of Biological Systems
- Psychological, Social, and Biological Foundations of Behaviour
- Critical Analysis and Reasoning Skills

Each of the four sections will receive a scaled score from a low of 118 to a high of 132, with a midpoint of 125. These 4 new MCAT scaled scores will be combined to create a total score that will range from 472 to 528, with a midpoint of 500. These scores are used by medical school admission committees to evaluate the MCAT component of the admissions process.

There are MCAT testing centers, both on and off campus, from coast to coast in the US and Canada. For a list of current locations, click here: [MCAT testing centres in the US and Canada](#). Additionally, there are numerous MCAT international testing locations which use a different testing schedule depending on location. Additional information can be found on the [International MCAT Testing Calendar](#) page of the AAMC website. The overall length of the new MCAT exam is approximately seven hours. The MCAT fee is \$345 (in USD) if made at least three weeks before the exam [registration fee](#).

For more information: Association of American Medical Colleges  
 Medical College Admission Test  
 655 K Street, NW, Suite 100,  
 Washington, DC, 20001-2399  
 Tel.: 202-828-0600  
 E-mail: [mcats@aamc.org](mailto:mcats@aamc.org) (not able to accept attachments)  
 Website: [www.aamc.org/students/applying/mcat/](http://www.aamc.org/students/applying/mcat/)

## AFMC Fee Assistance Programs

### *MCAT® Fee Assistance Program for Canadians*

The Association of American Medical Colleges (AAMC) and the Association of Faculties of Medicine of Canada have a fee assistance program for Canadian examinees in financial need who register for the Medical College Admission Test® (MCAT) during the 2025 testing year.

In order to support an increasingly diverse physician workforce, the AAMC is committed to providing support to Canadian students who would be unable to take the MCAT without financial assistance. Canadian examinees will be able to register for an MCAT exam date through this fee assistance program.

Canadian fee assistance applicants who qualify will receive reduced scheduling, rescheduling, and cancellation rates for the 2025 testing year. Visit the [students-residents.aamc.org/fee-assistance-program/fee-assistance-program-canadian-examinees](http://students-residents.aamc.org/fee-assistance-program/fee-assistance-program-canadian-examinees) for full details.

To learn more about the 2026 eligibility criteria, application process and deadlines, please see [www.afmc.ca/resources-data/education/aspirants-applicants/](http://www.afmc.ca/resources-data/education/aspirants-applicants/)

Please be aware that you must be approved for the Fee Assistance Program prior to registering for the MCAT exam to receive the reduced MCAT registration fees. AFMC is responsible for reviewing applications, determining eligibility for financial assistance, and notifying awardees. Please note that benefits are not retroactive, and you must be approved before scheduling, rescheduling, or canceling

your MCAT exam. Please note, the AAMC and AFMC reserve the right to discontinue the program.

Questions regarding the application, evaluation, or qualification process? Please contact: [mcat-fap-paf@afmc.ca](mailto:mcat-fap-paf@afmc.ca)

### ***Application Fee Waiver Programs***

The Association of Faculties of Medicine of Canada administers the application fee waiver program. For the upcoming application cycle the following faculties are participating in this program:

- University of Ottawa
- Queen's University
- University of Toronto
- Northern Ontario School of Medicine University (NOSM U)
- Toronto Metropolitan University
- McMaster University
- Western University
- University of Saskatchewan
- University of Alberta

The application fee waiver program waives most, or all fees associated with applying to these medical faculties. Please visit the [application fee waiver website](#) for full details on eligibility requirements and how to apply.

For any additional questions please reach out to: [mcat-fap-paf@afmc.ca](mailto:mcat-fap-paf@afmc.ca)

## **Multiple Mini Interviews**

The Multiple Mini Interview (MMI) is an interview format that gauges an applicant's potential to successfully interact with patients and colleagues. The MMI is designed to measure communication skills, specifically verbal and nonverbal skills that cannot be measured using standardized written exams or by reviewing coursework transcripts. The MMI typically consists of 6 to 10 very short-timed interviews, each one about a specific scenario. The MMI has become the most common interview method for medical schools worldwide. Each medical school has a slightly different variation on MMI format.

### ***History***

Since its formal inception at the Michael G. DeGroote School of Medicine at McMaster University in 2004, the MMI subsequently spread as an admissions test across medical schools, and to other healing arts disciplines. By 2008, the MMI was being used as an admissions test by the majority of medical schools in Canada, Australia, Israel, and Brunei.

### ***MMI Procedure***

Interview stations—the domain(s) being assessed at any one station—are variable, and normally reflect the objectives of the selecting institution. Examples of domains include the "soft skills"—ethics, professionalism, interpersonal relationships, ability to manage, communicate, collaborate, as well as perform a task. An MMI interview station takes considerable time and effort to produce; it is composed of several parts, including the stem question, probing questions for the interviewer, and a scoring sheet.

**Circuit(s) of stations:** To reduce costs of the MMI the interview "stations" are kept short (eight minutes or less) and are conducted simultaneously in a circuit. Numbers of stations range from 8-10.

**Interviewers:** There is usually one interviewer per interview station. In a typical MMI, each interviewer stays in the same interview throughout, as candidates rotate through. The interviewer thus scores each candidate based upon the same interview scenario throughout the course of the test.

**Candidates:** Each candidate rotates through the circuit of interviews. For example, if each interview station is 8 minutes, and there are 9 interview stations, it will take the 9 candidates being assessed on that circuit 72 minutes to complete the MMI. Each of the candidates begins at a different interview station, rotating to the next interview station at the ringing of a bell.

As school MMI assessment questions and goals vary, refer to the site links for that faculty for more information on their MMI process. Some schools post sample questions for you to try.

## CASPer (Computer-Based Assessment for Sampling Personal Characteristics)

CASPer (Computer-Based Assessment for Sampling Personal Characteristics) test is a 90-minute, web-based Situational Judgement Test (SJT) designed to evaluate key personal and professional characteristics that make for successful students and graduates. CASPer provides admissions and selection committees with a reliable measure of traits like professionalism, ethics, communication, and empathy. It is a component of the application process used by certain medical schools in an effort to evaluate your personal and professional characteristics.

Each school incorporates CASPer in different ways to guide their admissions process. Most programs use CASPer alongside other metrics like GPA and MCAT scores as a pre-screening tool to decide who to invite to the interview process. Some programs use CASPer in a more impressionistic approach, to help facilitate decisions on candidates who are on the cusp of whether they are admitted to the program. Some programs implement a conservative cut-off score for CASPer to screen out applicants, while other programs take a closer look at candidates who have exceptionally high CASPer scores. For instance, [Dalhousie Medical School](#) will only consider applicants who score above -1.5 standard deviations from the mean for interview.

### Medical Schools

Canadian Medical schools currently using CASPer (year adopted in brackets):

- McMaster University (2010)
- University of Ottawa (2015)
- McGill University (2017)
- Dalhousie University (2018)
- University of Alberta (2018)
- Université Laval (2019)
- University of Manitoba (2019)
- University of Saskatchewan (2019)

### CASPer Procedure

CASPer is delivered online. For you to successfully complete it you will need a computer with: an updated Chrome browser (recommended), stable broadband internet connection, audio output (speakers or headphones) and webcam (mandatory for all applicants). Note: Taking CASPer using a tablet is NOT recommended.

The CASPer is a 90-minute test consisting of 12 sections. Each section follows a similar format consisting first of a short video or directed text, followed by 3 questions relating to the material presented in the video or question stem. Some sections are prompted by situational challenges displayed in short video clips; others are prompted by self-reflective questions. The applicant has 5 minutes to answer all questions in a given section.

*Video-based scenarios consist of:*

- A description of your role
- A short video (1-2 minutes long)
- Three open-ended follow-up questions pertaining to the video. All three questions must be answered within a total of 5 minutes.

*Word-based scenarios consist of:*

- A short statement to consider
- Three open-ended follow-up questions pertaining to the statement. All three questions must be answered within a total of 5 minutes.

Note: There is NO VIDEO for these sections

There is an optional 15-minute break halfway through the test.

For more information on CASPer, including access to sample questions, visit the official website at: [takeCASPer.com](http://takeCASPer.com).

## Repeat Applicants

An applicant who does not receive an offer of admission must decide whether to re-apply for admission in a subsequent year. Unsuccessful applicants should try to reach an objective assessment of why they did not receive an offer and see if there are areas of their application upon which they can improve. Unsuccessful applicants should realize that the reason for rejection may not be the lack of ability or qualities but the competition for the limited number of places that are available when the number of qualified applicants greatly exceeds the number of available places. Well-qualified applicants should consider re-applying for admission to a faculty of medicine and, in recent years, repeat applicants have fared relatively well.

## Applying to Study Medicine Outside Canada

If an applicant decides to seek admission to a medical faculty outside Canada, they must bear in mind that returning to do postgraduate training or practise medicine in Canada may prove difficult. Limitations on recognition of international medical degrees apply to qualifications earned abroad by citizens as well as by non-citizens of Canada. Strong motivation, determination and adequate academic preparation are in themselves no guarantee that a Canadian citizen who attends an international medical faculty will be able to train or practise medicine in Canada in the future.

*A note about American Medical School Admission Requirements:*

There are 158 MD awarding medical schools in the United States of America. Applying to most schools can be done via the American Medical College Application Service® (AMCAS®) which is the American Association of Medical Colleges centralized medical school application processing service, and you can search for individual schools in the [MSAR](#). Some schools have school-specific application processes. See

the AAMC student website at [students-residents.aamc.org/](https://students-residents.aamc.org/) for more information.

## International Students

Not all faculties of medicine accept applications from international students. Conversely, some faculties of medicine have contracts with international governments or institutions to accept applications for “supernumerary” positions. The conditions of admission may require that the faculty of medicine will be compensated for the entire cost of medical education, the student will not apply for post-MD (residency) training in Canada, and/or that these graduates will return to their countries of origin to practise medicine. Information about contract positions is available from the educational institutions or governments that have negotiated such contracts.

International students planning to study medicine in Canada are personally responsible for obtaining the necessary student authorization and student visa to enter Canada for the purpose of study. All matters related to entering Canada must be taken up at the Canadian embassy, High Commission or consulate nearest to the student.

# Faculties of Medicine

Faculty information is provided in the language of instruction for the program.

The statistics provided in the sections below are applicable to each individual faculty of medicine. For national data and additional data elements by faculty of medicine, please see the annual ***Canadian Medical Education Statistics*** Section F “Applicant Study” publication available at:

[www.afmc.ca/resources-data/data/canadian-medical-education-statistics-cmes/](http://www.afmc.ca/resources-data/data/canadian-medical-education-statistics-cmes/)

---

## Faculty of Medicine, MEMORIAL UNIVERSITY OF NEWFOUNDLAND

---

<b>Length of Program (Years):</b>	4	<i>Notes: N/A</i>
<b>Language of Instruction:</b>	English	<i>Notes: N/A</i>
<b>Testing of Language Proficiency:</b>	No	<i>Notes: N/A</i>
<b>New Admissions into Year One:</b>	110	<i>Notes: N/A</i>

### First-Year Tuition

- **Canadian Residents:** \$14,250.00
- **In-Province Residents:** \$14,250.00
- **Compulsory Fees:** Approximately \$4,400 in Phase 1; \$500-\$1,300 in Phases 2 & 3, annually
- **Visa Students:** N/A<sup>1</sup>
- **Foreign Students:** N/A<sup>1</sup>  
(Above-Quota contract)

### **Tuition Details:**

N/A

---

### **Year One Position Breakdown:**

3 positions available to Indigenous students who qualify for the provincial pool. The 110 positions include: 83 residents of Newfoundland and Labrador, 1 seat for Nunavut, Island; 6 seats for remaining provinces in Canada.

Charlottetown, PEI will have a regional campus of Memorial University, Faculty of Medicine that will have 20 seats, limited to residents of PEI meeting published residency criteria. Please see [www.upei.ca/medicine](http://www.upei.ca/medicine) for more details.

### **Selection Factors:**

Applicants must be Canadian citizens/permanent residents at the time of application.

### **Academic Criteria:**

A Bachelor's degree is required at the time of admission.

### **Special Consideration:**

N/A

---

<sup>1</sup> International students no longer accepted, effective June 1, 2021. Seats are available to Canadian students or permanent residents only

---

## Faculty of Medicine, MEMORIAL UNIVERSITY OF NEWFOUNDLAND

---

<b>Mean GPA:</b>	3.5/4.0	<i>Details:</i>	No minimum, however, applicants must be academically competitive.
<b>MCAT Required?</b>	Yes	<i>Details:</i>	No minimum. MCAT of at least 505 is recommended.
<b>CASPer Required?</b>	Yes	<i>Details:</i>	No minimum. Scores in 3rd & 4th quartile are recommended.
<b>Deferred Admission?</b>	Yes	<i>Details:</i>	Deferrals are granted at the Admissions Committee discretion each cycle for up to 4 accepted applicants.
<b>Transfers?</b>	Yes	<i>Details:</i>	At the discretion of the UGME office, if the applicant satisfies requirements.

Not usually considered but may be in rare circumstances from a Canadian medical faculty.

### **Combined Programs:**

MD/PhD Students must be admitted to the first-year medical program and then may be considered.

### Application Details:

<i>Start Date:</i>	June 25, 2025
<i>Deadline:</i>	August 27, 2025
<i>Fee:</i>	\$255.00
<i>Form Type:</i>	Application via Memorial University

### Interview Details:

<i>Types:</i>	TBD. Will include at least an MMI
<i>Date:</i>	TBD
<i>Location:</i>	Online video interviews
<i># In-Province/Out-of-Province/ Out-of-Canada/Total:</i>	153/111/0/264
<i>Fees:</i>	TBD

### Offer of Admission Details:

<i>Date:</i>	March - June 2026
<i>Number of Offers:</i>	95-120
<i>Deposit:</i>	\$1,000.00
<i>Distribution Type:</i>	Online application system via student's accounts

---

## Faculty of Medicine, MEMORIAL UNIVERSITY OF NEWFOUNDLAND

---

### To Request an Application or More Detailed Information:

Admissions Office,  
Faculty of Medicine, Memorial University of  
Newfoundland,  
Medical Education Centre, Room 2M202,  
St. John's NL, A1B 3V6

**Tel:** 1-855-633-9800 or 709-864-6328

**Fax:** 709-864-6365

**E-Mail:** [munmed@mun.ca](mailto:munmed@mun.ca)

**Website:** [www.mun.ca/medicine/administrative-departments/admissions/](http://www.mun.ca/medicine/administrative-departments/admissions/)

**Apps:** Memorial University's Online Application System.  
Accessible on June 25, 2025.

---

## YEAR FOR WHICH ADMISSION WAS SOUGHT

	2019/20	2020/21	2021/22	2022/23	2023/24
<b>Applicant Statistics: Memorial</b>					
Offered and Registered	78	77	78	79	76
Offered Deferred	3	2	2	4	2
Offer Declined	36	39	24	21	17
Not Offered	706	675	731	580	493
Total Applicants	823	793	835	684	588

<b>SUCCESS RATE (%) BY RESIDENCE</b>					
Newfoundland and Labrador	29.5	29.1	30.2	31.3	43.6
Other Canadian	8.7	9.8	7.2	10.1	7.9
Foreign	0.0	0.0	0.0	-	-
All Applicants to Memorial	14.2	14.9	13.1	16.2	17.3

**Success Rate:** Percentage of applicants who received at least one offer of admission whether subsequently registered, declined or deferred.

*In-Province* refers to Canadian Citizens and Permanent Residents residing in the same province as the faculty. *Other Canadian* refers to Canadian Citizens and Permanent Residents residing outside the province of the faculty. *Foreign* refers to applicants who are not Canadian Citizens or Permanent Residents, including student visa holders, refugees, and refugee claimants.

**Note:** A dash (—) indicates no applicants were reported for that group. A value of 0 means applicants were reported, but none received an offer.

---

## Faculty of Medicine, DALHOUSIE UNIVERSITY

---

<b>Length of Program (Years):</b>	4	<i>Notes:</i> N/A
<b>Language of Instruction:</b>	English	<i>Notes:</i> N/A
<b>Testing of Language Proficiency:</b>	Yes	<i>Notes:</i> Only for externally funded supernumerary advanced placement positions
<b>New Admissions into Year One:</b>	164	<i>Notes:</i> N/A

### First-Year Tuition

- **Canadian Residents:** \$25,000.00
- **In-Province Residents:** \$25,000.00
- **Compulsory Fees:** TBD
- **Visa Students:** TBD
- **Foreign Students:** \$75,000.00  
(Above-Quota contract)

### **Tuition Details:**

[2024/2025 Medicine Fee Schedule](#)

---

### **Year One Position Breakdown:**

- 79 positions for Nova Scotia residents at the Halifax Campus
- 30 positions for Nova Scotia residents at the Cape Breton Medical Campus
- 40 positions for New Brunswick residents at the Saint John, New Brunswick Campus
- 6 positions for Prince Edward Island residents at the Halifax Campus
- 9 positions for Other Canadian residents at the Halifax Campus

### **Selection Factors:**

Eligibility for admission to Dalhousie's Undergraduate Medical Education program requires applicants to meet minimum academic requirements (GPA, MCAT, undergraduate degree completion) and minimum non-academic requirements as determined from CASPer, MMI, and Personal Statements/Supplemental.

Applicants who do not meet all minimum requirements are not usually considered for admission. Final selection for admissions is determined by application file score and Admissions Committee approval.

Priority Pathways for Black, Indigenous, and rural applicants are available.

### **Academic Criteria:**

A completed, or in progress to be completed 90-120 Credit Hour Baccalaureate Degree, in any field, from an accredited institution is required. A minimum GPA and minimum MCAT score are required.

### **Special Consideration:**

Priority Pathways for Black, Indigenous, and rural Applicants are available.

---

## Faculty of Medicine, DALHOUSIE UNIVERSITY

---

<b>Mean GPA:</b>	3.8/4.0	<i>Details:</i>	Minimum requirement: 3.3/4.0 for NS/NB/PEI Residents and 3.7/4.0 for Other Canadian Residents.
<b>MCAT Required?</b>	Yes	<i>Details:</i>	Minimum total MCAT score requirement is determined in relation to GPA. This sliding scale is available on our website here: <a href="http://medicine.dal.ca/departments/core-units/admissions/admissions/mcat-requirement.html">medicine.dal.ca/departments/core-units/admissions/admissions/mcat-requirement.html</a>
<b>CASPer Required?</b>	Yes	<i>Details:</i>	CASPer results will be used for interview selection purposes only. Applicants who do not complete CASPer or who do not meet the minimum CASPer score will not be considered.
<b>Deferred Admission?</b>	Yes	<i>Details:</i>	Only under exceptional circumstances: deferral requests are not routinely granted and have generally been provided only in rare and exceptional circumstances.
<b>Transfers?</b>	No	<i>Details:</i>	N/A

### Combined Programs:

In collaboration with Dalhousie Faculty of Dentistry, one student who has completed the Dentistry program is admitted to the combined Dentistry/Masters in Oral Maxillofacial Surgery Program.

### Application Details:

<i>Start Date:</i>	June 15, 2025
<i>Deadline:</i>	Step 1 - July 31, 2025, Step 2 - Sept 3, 2025
<i>Fee:</i>	\$70.00
<i>Form Type:</i>	Online application

### Interview Details:

<i>Types:</i>	Virtual MMI
<i>Date:</i>	TBD
<i>Location:</i>	Virtual
<i># In-Province/Out-of-Province/ Out-of-Canada/Total:</i>	Approximately 300-400 applicants are invited for interview each year. Interview selection is determined by GPA eligibility, MCAT eligibility and CASPer. For applicants in the Other Canadian pool, interview selection is also determined by information regarding an applicant's compelling reasons for choosing Dalhousie Medicine as their preferred choice. Due to limited interview capacity, interview selection will be determined by pre-interview score calculated by 50% GPA, 25% MCAT, and 25% CASPer.
<i>Fees:</i>	TBD

---

## Faculty of Medicine, DALHOUSIE UNIVERSITY

---

### Offer of Admission Details:

<i>Date:</i>	March 31, 2026
<i>Number of Offers:</i>	164
<i>Deposit:</i>	\$500.00
<i>Distribution Type:</i>	E-mail + student portal

---

### To Request an Application or More Detailed Information:

Dalhousie University  
Faculty of Medicine  
5849 University Ave, Halifax  
Nova Scotia, Canada B3H 4R2

**Tel:** 902-494-1874  
**Fax:** N/A  
**E-Mail:** [medicine.admissions@dal.ca](mailto:medicine.admissions@dal.ca)  
**Website:** [admissions.medicine.dal.ca](http://admissions.medicine.dal.ca)  
**Apps:** TBD

---

## YEAR FOR WHICH ADMISSION WAS SOUGHT

	2019/20	2020/21	2021/22	2022/23	2023/24
<b>Applicant Statistics: Dalhousie</b>					
Offered and Registered	114	127	131	146	144
Offered Deferred	0	0	6	2	1
Offer Declined	27	23	32	19	19
Not Offered	940	1,214	1,594	1,915	1,581
Total Applicants	1,085	1,365	1,763	2,082	1,745

<b>SUCCESS RATE (%) BY RESIDENCE</b>					
Maritimes Provinces	27.8	27.2	21.0	19.4	25.0
Other Canadian	3.0	2.8	3.2	2.2	2.3
Foreign	14.8	4.8	5.3	10.3	8.7
All Applicants to Dalhousie	13.1	11.0	9.6	8.1	9.9

---

**Success Rate:** Percentage of applicants who received at least one offer of admission whether subsequently registered, declined or deferred.

*In-Province* refers to Canadian Citizens and Permanent Residents residing in the same province as the faculty. *Other Canadian* refers to Canadian Citizens and Permanent Residents residing outside the province of the faculty. *Foreign* refers to applicants who are not Canadian Citizens or Permanent Residents, including student visa holders, refugees, and refugee claimants.

## Faculté de médecine, UNIVERSITÉ LAVAL

<b>Durée du programme (Ans) :</b>	4 ou 5	<i>Remarques :</i> De 4 à 5 ans, selon le cheminement choisi et le milieu de formation attribué (Lévis, Québec ou Rimouski).
<b>Langue d'enseignement :</b>	Français	<i>Remarques :</i> S.O.
<b>Épreuve de compétence en linguistique :</b>	Oui	<i>Remarques :</i> S.O.
<b>Nouvelles Admissions en Première Année :</b>	316	<i>Remarques :</i> Environ 316 : ce nombre pourrait augmenter en raison d'attritions lors d'années précédentes.

### Frais de scolarité de première année :

▪ <b>Résidents canadiens :</b>	15 449,00 \$ <sup>1</sup>
▪ <b>Résidents du Québec :</b>	4 950,00 \$ <sup>1</sup>
▪ <b>Frais obligatoires :</b>	1 880,00 \$ <sup>1</sup>
▪ <b>Étudiants détenteurs d'un visa :</b>	42 565,00 \$ <sup>1</sup>
▪ <b>Étudiants étrangers :</b> (Contrat hors quota)	42 565,00 \$ <sup>1</sup>

### Détails des frais de scolarité :

Les frais sont ceux de la première année en médecine. Pour les Québécoises et Québécois, le coût d'un cours de 3 crédits est de 383,52 \$ incluant les frais obligatoires.

### Répartition des postes de première année :

- 301 places pour les Québécoises et Québécois collégiens et universitaires
  - 55 % de ces places sont attribuées aux collégiens incluant jusqu'à 4 places pour des collégiens issus d'un milieu à faible revenu - programme Envol
  - 45 % aux universitaires, incluant jusqu'à 8 places pour les universitaires possédant un doctorat de recherche ou en voir de l'obtenir et jusqu'à 8 places pour les universitaires sur le marché du travail
- 1 place pour une Canadienne ou un Canadien provenant d'une autre province ou territoire que le Québec
- 3 places pour les Canadiennes et Canadiens admissibles dans le cadre de l'Entente intergouvernementale entre le Québec et le Nouveau-Brunswick
- 1 place pour une candidate ou un candidat de l'international avec permis d'études
- Jusqu'à 10 places pour les membres des Premières Nations et Inuit au Québec (PNIQ)
  - Ces places sont réparties entre les 4 facultés de médecine du Québec
- Jusqu'à 4 places pour les membres des Forces armées canadiennes - Programme militaire d'études en médecine (PMEM)
  - Ces places sont réparties entre les 4 facultés de médecine francophones du Québec
- 2 places pour les universitaires de toute provenance visant la formation spécialisée en chirurgie buccale et maxillo-faciale (CBMF)

<sup>1</sup> La mise à jour n'est pas encore disponible - susceptible d'être modifiée ultérieurement

## Faculté de médecine, UNIVERSITÉ LAVAL

- De plus, en fonction des attritions annuelles, jusqu'à 4 places (3 selon les attritions et 1 place supplémentaire) pourraient être offertes aux Québécoises et Québécois médecins diplômés à l'extérieur du Canada ou des États-Unis (DHCEU) désirant débiter à l'externat.

### Facteurs de sélection :

Consultez le site Web pour tous les détails : [www.fmed.ulaval.ca/etudes/doctorat-en-medecine#contingentement-et-selection](http://www.fmed.ulaval.ca/etudes/doctorat-en-medecine#contingentement-et-selection)

### Critères d'études :

Les cours préalables de niveau collégial ou des cours équivalents suivants :

Biologie : (OB01 ou 00UK) et (OB0F ou 00XU)

Chimie : (OC01 ou 00UL) et (OC02 ou 00UM) et (OC0F ou 00XV)

Mathématiques : (OM02 ou 00UN et OM03 ou 00UP) ou (OPU2 ou 022X et OPU3 ou 022Y)

Physique : (OP01 ou 00UR) et (OP02 ou 00US) et (OP03 ou 00UT)

ou avoir réussi les cours suivants :

Biologie : (SN1 ou NYA) et (SNU ou NYB ou 401)

Chimie : (SN1 ou NYA) et (SN2 ou NYB) et (SNU ou DYD ou 202)

Mathématiques : (SN2 ou NYA et SN3 ou NYB) ou (SH2 ou 103-RE et SH3 ou 203-RE)

Physique : (SN1 ou NYA) et (SN2 ou NYB) et (SN3 ou NYC)

Consultez le site Web pour plus de détails : [www.fmed.ulaval.ca/etudes/doctorat-en-medecine#admissibilite](http://www.fmed.ulaval.ca/etudes/doctorat-en-medecine#admissibilite)

### Considération particulière

Des critères d'admission particuliers s'appliquent selon la catégorie de candidatures. Consultez le site Web pour tous les détails : [www.fmed.ulaval.ca/etudes/doctorat-en-medecine#contingentement-et-selection](http://www.fmed.ulaval.ca/etudes/doctorat-en-medecine#contingentement-et-selection)

La formation au préexternat est offerte dans 3 milieux (Lévis, Québec et Rimouski). Voir le site Web pour connaître les modalités d'attribution et les particularités des milieux : [www.fmed.ulaval.ca/etudes/doctorat-en-medecine#demande-d-admission](http://www.fmed.ulaval.ca/etudes/doctorat-en-medecine#demande-d-admission)

<b>Moyenne GPA :</b>	Cote de rendement seuil minimale établie pour chaque catégorie de candidatures.	<i>Détails :</i> Consultez le site Web : <a href="http://www.fmed.ulaval.ca/etudes/doctorat-en-medecine#contingentement-et-selection">www.fmed.ulaval.ca/etudes/doctorat-en-medecine#contingentement-et-selection</a>
<b>MCAT requis?</b>	Non	<i>Détails :</i> S.O.
<b>CASPer requis?</b>	Oui	<i>Détails :</i> <a href="http://acuityinsights.app/?lang=fr">acuityinsights.app/?lang=fr</a>
<b>Admissions reportées?</b>	Non	<i>Détails :</i> S.O.
<b>Transferts?</b>	Non	<i>Détails :</i> S.O.

### Programmes combinés :

Aucun à l'admission

---

## Faculté de médecine, UNIVERSITÉ LAVAL

---

### Détails d'applications :

<i>Date de début :</i>	1 septembre 2025
<i>Date limite :</i>	Le 1 novembre 2025 pour les candidatures universitaires, 15 février pour les candidatures préuniversitaires de l'international avec permis d'études et le 1er mars 2026 pour les candidatures canadiennes collégiennes. Consulter le site Web pour plus de détails : <a href="http://www.ulaval.ca/admission/deposez-votre-demande-dadmission/dates-limites-de-depot">www.ulaval.ca/admission/deposez-votre-demande-dadmission/dates-limites-de-depot</a>
<i>Frais :</i>	99,50 \$ <sup>1</sup>
<i>Type de formulaire :</i>	Demandes électroniques et papiers

### Détails d'entrevues :

<i>Types :</i>	CASPer (pré-sélection pour les MEM) et MEM
<i>Date :</i>	25 et 26 avril 2026 : Voir section MEM au <a href="http://www.fmed.ulaval.ca/etudes/doctorat-en-medecine#contingentement-et-selection">www.fmed.ulaval.ca/etudes/doctorat-en-medecine#contingentement-et-selection</a>
<i>Lieu :</i>	Université Laval ou Université de Montréal
<i># En-Province/Hors-de-la-Province/Hors-du-Canada/Total :</i>	À déterminer
<i>Frais :</i>	283,10 \$ <sup>1</sup> (paiement unique pour les MEM de l'Université Laval et de l'Université de Montréal)

### Détails des offres d'admission :

<i>Date :</i>	mi-mai 2026
<i>Nombre d'offres :</i>	À déterminer
<i>Dépôt :</i>	À déterminer
<i>Mode de livraison des offres d'admission :</i>	Courriel

---

### **Pour faire une demande ou obtenir de l'information :**

<a href="mailto:admission.med@fmed.ulaval.ca">admission.med@fmed.ulaval.ca</a>	<b>Tél :</b> 418-656-2131, ext. 402492
Site Web : <a href="http://www.fmed.ulaval.ca/etudes/doctorat-en-medecine#demande-d-admission">www.fmed.ulaval.ca/etudes/doctorat-en-medecine#demande-d-admission</a>	<b>Télec :</b> S.O.
	<b>Courriel :</b> <a href="mailto:admission.med@fmed.ulaval.ca">admission.med@fmed.ulaval.ca</a>
	<b>Site Web :</b> <a href="http://www.fmed.ulaval.ca/etudes/doctorat-en-medecine">www.fmed.ulaval.ca/etudes/doctorat-en-medecine</a>
	<b>Apps :</b> <a href="http://www.ulaval.ca/admission/deposez-votre-demande-dadmission">www.ulaval.ca/admission/deposez-votre-demande-dadmission</a>

---

<sup>1</sup> La mise à jour n'est pas encore disponible - susceptible d'être modifiée ultérieurement

## ANNÉE DE LA DEMANDE D'ADMISSION

	2019/20	2020/21	2021/22	2022/23	2023/24
<b>Statistiques relatives aux candidats : Laval</b>					
Offre et inscription	228	241	238	264	290
Offre d'admission reportée	0	0	0	0	0
Offre refusée	227	308	174	216	303
Aucune offre	2,053	1,742	2,670	2,809	2,604
Total des demandes	2,508	2,291	3,082	3,289	3,197

<b>TAUX DE SUCCÈS (%) PAR LIEU DE RÉSIDENCE</b>					
Québec	19.2	26.2	14.0	15.5	20.1
Autre province/territoire canadien	12.2	9.3	3.2	7.1	4.4
Étranger	0.0	0.0	3.1	3.3	0.7
Toutes les demandes à Laval <sup>1</sup>	18.1	24.0	13.4	14.6	18.5

<sup>1</sup> La province de Québec impose des restrictions quant au nombre de places allouées aux autres résidents au Canada et aux résidents hors Canada. La répartition est répartie entre les quatre facultés de médecine lors de chaque cycle d'admission.

Taux de réussite : Pourcentage de candidats ayant reçu au moins une offre d'admission, qu'ils aient été inscrits ultérieurement, refusés ou reportés.

« Individuels de la province » désigne les citoyens canadiens et les résidents permanents résidant dans la même province que la faculté. « Autres Canadiens » désigne les citoyens canadiens et les résidents permanents résidant à l'extérieur de la province où se trouve la faculté. « Étrangers » désigne les candidats qui ne sont ni citoyens canadiens ni résidents permanents, y compris les titulaires d'un visa étudiant, les réfugiés et les demandeurs d'asile. »

Remarque : Une valeur de 0 signifie que des candidats ont été signalés, mais qu'aucun n'a reçu d'offre.

## Faculté de médecine et des sciences de la santé, UNIVERSITÉ DE SHERBROOKE

<b>Durée du programme (Ans) :</b>	4	<i>Remarques :</i>	S.O.
<b>Langue d'enseignement :</b>	Français	<i>Remarques :</i>	S.O.
<b>Épreuve de compétence en linguistique :</b>	Oui	<i>Remarques :</i>	S.O.
<b>Nouvelles Admissions en Première Année :</b>	238 <sup>1</sup>	<i>Remarques :</i>	Ce nombre pourrait augmenter en raison d'abandons lors d'années précédentes.

### Frais de scolarité de première année :

- Résidents canadiens : 9 921,06 \$
- Résidents du Québec : 3 626,76 \$
- Frais obligatoires : À déterminer
- Étudiants détenteurs d'un visa : À déterminer
- Étudiants étrangers : 31 270,28 \$  
(Contrat hors quota)

### Détails des frais de scolarité :

À déterminer

### Répartition des postes de première année :

208 pour des candidats du contingent régulier du Québec, 28 pour les candidats de l'Atlantique, 1 pour les citoyens canadiens hors Québec et Atlantique, 1 pour les candidats étrangers détenant un visa d'études. Il y a une entente entre les 4 Facultés du Québec pour l'admission des personnes des premières nations et inuits du Québec ainsi que pour des membres des Forces armées canadiennes.<sup>1</sup>

### Facteurs de sélection :

Visitez notre site Internet : [www.usherbrooke.ca/etudes-medecine/programmes-detudes/doctorat-en-medecine/admission](http://www.usherbrooke.ca/etudes-medecine/programmes-detudes/doctorat-en-medecine/admission)

### Critères d'études :

Visitez notre site Internet : [www.usherbrooke.ca/etudes-medecine/programmes-detudes/doctorat-en-medecine/admission](http://www.usherbrooke.ca/etudes-medecine/programmes-detudes/doctorat-en-medecine/admission)

### Considération particulière :

Des conditions particulières s'appliquent à certains contingents, visitez notre site Internet: [www.usherbrooke.ca/etudes-medecine/programmes-detudes/doctorat-en-medecine/admission](http://www.usherbrooke.ca/etudes-medecine/programmes-detudes/doctorat-en-medecine/admission)

<sup>1</sup> La mise à jour n'est pas encore disponible - susceptible d'être modifiée ultérieurement

---

## Faculté de médecine et des sciences de la santé, UNIVERSITÉ DE SHERBROOKE

---

<b>Moyenne GPA :</b>	S.O.	<i>Détails :</i>	S.O.
<b>MCAT requis?</b>	Non	<i>Détails :</i>	S.O.
<b>CASPer requis?</b>	Oui	<i>Détails :</i>	S.O.
<b>Admissions reportées?</b>	Non	<i>Détails :</i>	S.O.
<b>Transferts?</b>	Non	<i>Détails :</i>	S.O.

### **Programmes combinés :**

MD/MSc, MD/PhD possible pendant la formation mais aucun poste n'est réservé pour ce profil à l'admission

### Détails d'applications :

<i>Date de début :</i>	1 septembre 2025
<i>Date limite :</i>	1er novembre 2025 (1er mars 2026 pour les candidats au cégep)
<i>Frais :</i>	104,00 \$
<i>Type de formulaire :</i>	Électronique

### Détails d'entrevues :

<i>Types :</i>	CASPer/MEM
<i>Date :</i>	À venir
<i>Lieu :</i>	À déterminer
<i># En-Province/Hors-de-la-Province/Hors-du-Canada/Total :</i>	À déterminer
<i>Frais :</i>	À déterminer

### Détails des offres d'admission :

<i>Date :</i>	Mai à août 2026
<i>Nombre d'offres :</i>	653 (2024)
<i>Dépôt :</i>	300,00 \$
<i>Mode de livraison des offres d'admission :</i>	Courriel

---

## Faculté de médecine et des sciences de la santé, UNIVERSITÉ DE SHERBROOKE

---

### Pour faire une demande ou obtenir de l'information :

Bureau de la registraire,  
Université de Sherbrooke,  
2500, boulevard de l'Université,  
Sherbrooke QC J1K 2R1

[www.usherbrooke.ca/registraire/](http://www.usherbrooke.ca/registraire/)

**Tél :** 819-821-7686

**Télé :** S.O.

**Courriel :** [admission-med@usherbrooke.ca](mailto:admission-med@usherbrooke.ca)

**Site Web :** [www.usherbrooke.ca/etudes-medecine/programmes-detudes/doctorat-en-medecine/admission](http://www.usherbrooke.ca/etudes-medecine/programmes-detudes/doctorat-en-medecine/admission)

**Apps :** À déterminer

---

## ANNÉE DE LA DEMANDE D'ADMISSION

	2019/20	2020/21	2021/22	2022/23	2023/24
<b>Statistiques relatives aux candidats : Sherbrooke</b>					
Offre et inscription	200	199	219	235	257
Offre d'admission reportée	0	0	0	0	0
Offre refusée	301	166	0	0	242
Aucune offre	2,344	1,822	3,132	3,161	2,800
Total des demandes	2,940	2,448	3,351	3,396	3,299

<b>TAUX DE SUCCÈS (%) PAR LIEU DE RÉSIDENCE</b>					
Québec	17.3	15.0	9.1	6.6	17.3
Autre province/territoire canadien	20.8	15.8	15.4	10.7	15.7
Étranger	1.2	2.9	1.6	1.5	2.1
Toutes les demandes à Sherbrooke <sup>1</sup>	17.0	14.9	9.3	6.9	16.7

<sup>1</sup> La province de Québec impose des restrictions quant au nombre de places attribuées aux autres résidents au Canada et aux résidents hors Canada. La répartition est répartie entre les quatre facultés de médecine lors de chaque cycle d'admission.

Taux de réussite : Pourcentage de candidats ayant reçu au moins une offre d'admission, qu'elle ait été ultérieurement inscrite, refusée ou reportée.

« Individuels de la province » désigne les citoyens canadiens et les résidents permanents résidant dans la même province que la faculté. « Autres Canadiens » désigne les citoyens canadiens et les résidents permanents résidant à l'extérieur de la province où se trouve la faculté. « Étrangers » désigne les candidats qui ne sont ni citoyens canadiens ni résidents permanents, y compris les titulaires d'un visa étudiant, les réfugiés et les demandeurs d'asile. »

## Faculté de médecine, UNIVERSITÉ DE MONTRÉAL—Année préparatoire

<b>Durée du programme (Ans) :</b>	1	<i>Remarques :</i>	1 an (préalablement au programme MD)
<b>Langue d'enseignement :</b>	Français	<i>Remarques :</i>	S.O.
<b>Épreuve de compétence en linguistique :</b>	Oui	<i>Remarques :</i>	Pour tout candidat n'ayant pas complété son Cégep en français
<b>Nouvelles Admissions en Première Année :</b>	255	<i>Remarques :</i>	135 places sont prévues pour l'admission en 1re année du doctorat et 255 places pour l'année préparatoire. La répartition du nombre de places peut être modifié entre l'année préparatoire et le programme MD selon les profils des candidats retenus.

### Frais de scolarité de première année :

- **Résidents canadiens :** 14 023,00 \$ (base de 20 crédits par session) <sup>1</sup>
- **Résidents du Québec :** 5 631,00 \$ (base de 20 crédits par session) <sup>1</sup>
- **Frais obligatoires :** À déterminer
- **Étudiants détenteurs d'un visa :** 39 978,00 \$ (base de 20 crédits par session) <sup>1</sup>
- **Étudiants étrangers :** 39 978,00 \$ (base de 20 crédits par session) <sup>1</sup>  
(*Contrat hors quota*)

### **Détails des frais de scolarité :**

S.O.

### **Répartition des postes de première année :**

403 nouvelles admissions en première année.

390 places occupées par des résidents du Québec; 3 places selon l'entente avec la province du Nouveau-Brunswick, 3 places pour des étudiants des Premières Nations/Autochtones, 2 places pour des candidats internationaux entre l'année préparatoire et le programme MD.

Sur les 390 places, 135 sont prévues pour l'admission en première année du doctorat et 255 pour l'année préparatoire.

### **Facteurs de sélection :**

Tous les candidats font une demande d'admission à l'année préparatoire au programme MD et le Comité d'admission décide, selon le profil des candidats si ceux-ci seront admissibles à l'année préparatoire ou au programme MD directement. Dans la mesure des places disponibles, le candidat peut choisir de compléter ses études au Campus de Montréal ou au campus en Mauricie.

<sup>1</sup> Basé sur l'estimé de 2024-2025. La mise à jour n'est pas encore disponible - susceptible d'être modifiée ultérieurement

## Faculté de médecine, UNIVERSITÉ DE MONTRÉAL—Année préparatoire

### Critères d'études :

- Être titulaire d'un DEC en sciences, lettres et arts ou en sciences de la nature et avoir atteint les objectifs 00XU (biologie) et 00XV (chimie).
- Être titulaire d'un de cet avoir réussi les préalables de biologie, chimie, mathématiques et physique requis.
- Être titulaire d'un diplôme de premier cycle universitaire reconnu équivalent à un baccalauréat.
- Être titulaire d'un diplôme d'études postsecondaires reconnu équivalent à un DEC par l'UdeM.

### Considération particulière :

S.O.

<b>Moyenne GPA :</b>	S.O.	<i>Détails :</i>	S.O.
<b>MCAT requis?</b>	Non	<i>Détails :</i>	S.O.
<b>CASPer requis?</b>	Oui	<i>Détails :</i>	S.O.
<b>Admissions reportées?</b>	Non	<i>Détails :</i>	S.O.
<b>Transferts?</b>	Non	<i>Détails :</i>	S.O.

### Programmes combinés :

Aucun

### Détails d'applications :

<i>Date de début :</i>	1er août 2025
<i>Date limite :</i>	Candidats collégiens québécois : 1er mars 2026 Candidats universitaires : 1er novembre 2025
<i>Frais :</i>	À déterminer
<i>Type de formulaire :</i>	Version électronique

### Détails d'entrevues :

<i>Types :</i>	MEM
<i>Date :</i>	25 - 26 avril 2026
<i>Lieu :</i>	À déterminer
<i># En-Province/Hors-de-la-Province/Hors-du-Canada/Total :</i>	Environ 1100
<i>Frais :</i>	291,60 \$

---

## Faculté de médecine, UNIVERSITÉ DE MONTRÉAL—Année préparatoire

---

### Détails des offres d'admission :

<i>Date :</i>	15 mai 2026
<i>Nombre d'offres :</i>	390
<i>Dépôt :</i>	300,00 \$
<i>Mode de livraison des offres d'admission :</i>	Courriel

---

### **Pour faire une demande ou obtenir de l'information :**

[admission.umontreal.ca/programmes/  
doctorat-de-1er-cycle-en-medecine/](https://admission.umontreal.ca/programmes/doctorat-de-1er-cycle-en-medecine/)

**Tél :** 514-343-7076

**Télec :** Aucun

**Courriel :** [admission-md@umontreal.ca](mailto:admission-md@umontreal.ca)

**Site Web :** [md.umontreal.ca/](https://md.umontreal.ca/)

**Apps :** [admission.umontreal.ca/programmes/  
doctorat-de-1er-cycle-en-medecine/](https://admission.umontreal.ca/programmes/doctorat-de-1er-cycle-en-medecine/)

---

## ANNÉE DE LA DEMANDE D'ADMISSION

	2019/20	2020/21	2021/22	2022/23	2023/24
<b>Statistiques relatives aux candidats : Montréal (Année préparatoire)</b>					
Offre et inscription	209	219	225	229	235
Offre d'admission reportée	1	0	1	0	0
Offre refusée	165	210	219	222	197
Aucune offre	2,065	1,713	2,300	2,476	2,357
Total des demandes	2,440	2,143	2,745	2,927	2,789

<b>TAUX DE SUCCÈS (%) PAR LIEU DE RÉSIDENCE</b>					
Québec	16.5	22.1	17.5	16.4	16.5
Autre province/territoire canadien	5.6	4.5	2.0	1.2	2.4
Étranger	1.5	1.6	0.9	0.9	1.8
Toutes les demandes à Montréal (Année préparatoire) <sup>1</sup>	15.4	20.0	16.2	15.4	15.5

<sup>1</sup> La province de Québec impose des restrictions quant au nombre de places allouées aux autres résidents au Canada et aux résidents hors Canada. La répartition est répartie entre les quatre facultés de médecine lors de chaque cycle d'admission.

Taux de réussite : Pourcentage de candidats ayant reçu au moins une offre d'admission, qu'ils aient été inscrits ultérieurement, refusés ou reportés.

« Individuels de la province » désigne les citoyens canadiens et les résidents permanents résidant dans la même province que la faculté. « Autres Canadiens » désigne les citoyens canadiens et les résidents permanents résidant à l'extérieur de la province où se trouve la faculté. « Étrangers » désigne les candidats qui ne sont ni citoyens canadiens ni résidents permanents, y compris les titulaires d'un visa étudiant, les réfugiés et les demandeurs d'asile. »

## Faculté de médecine, UNIVERSITÉ DE MONTRÉAL—Doctorat de 1er cycle en médecine (Programme MD)

<b>Durée du programme (Ans) :</b>	4	<i>Remarques :</i> S.O.
<b>Langue d'enseignement :</b>	Français	<i>Remarques :</i> S.O.
<b>Épreuve de compétence en linguistique :</b>	Oui	<i>Remarques :</i> Pour tout candidat n'ayant pas complété son Cégep en français ou un diplôme universitaire dans une institution francophone reconnue.
<b>Nouvelles Admissions en Première Année :</b>	135	<i>Remarques :</i> 135 places sont prévues pour l'admission en 1re année du doctorat et 255 places pour l'année préparatoire. La répartition du nombre de places peut être modifié entre l'année préparatoire et le programme MD selon les profils des candidats retenus.

### Frais de scolarité de première année :

- **Résidents canadiens :** 14 023 \$ (base de 20 crédits par session) <sup>1</sup>
- **Résidents du Québec :** 5 631 \$ (base de 20 crédits par session) <sup>1</sup>
- **Frais obligatoires :** 717 \$ par année
- **Étudiants détenteurs d'un visa :** 39 978 \$ (base de 20 crédits par session) <sup>1</sup>
- **Étudiants étrangers :** 39 978 \$ (base de 20 crédits par session) <sup>1</sup>  
(*Contrat hors quota*)

### Détails des frais de scolarité :

S.O.

### Répartition des postes de première année :

403 nouvelles admissions en première année.

390 places occupées par des résidents du Québec; 3 places selon l'entente avec la province du Nouveau-Brunswick, 3 places pour des étudiants des Premières Nations/Autochtones, 2 places pour des candidats internationaux entre l'année préparatoire et le programme MD.

Sur les 390 places, 135 sont prévues pour l'admission en première année du doctorat et 255 pour l'année préparatoire.

### Facteurs de sélection :

Tous les candidats font une demande d'admission à l'année préparatoire au programme MD et le Comité d'admission décide, selon le profil des candidats si ceux-ci seront admissibles à l'année préparatoire ou au programme MD directement. Dans la mesure des places disponibles, le candidat peut choisir de compléter ses études au Campus de Montréal ou au campus en Mauricie.

<sup>1</sup> Basé sur l'estimé de 2024-2025. La mise à jour n'est pas encore disponible - susceptible d'être modifiée ultérieurement

## Faculté de médecine, UNIVERSITÉ DE MONTRÉAL—Doctorat de 1er cycle en médecine (Programme MD)

### Critères d'études :

- Être titulaire d'un diplôme de premier cycle universitaire reconnu équivalent à un baccalauréat
- Être titulaire d'un doctorat en médecine décerné par une faculté de médecine reconnue par le Conseil médical du Canada et avoir obtenu la reconnaissance d'équivalence du diplôme de docteur en médecine par le Collège des médecins du Québec (CMQ)

### Considération particulière :

S.O.

<b>Moyenne GPA :</b>	S.O.	<i>Détails :</i>	S.O.
<b>MCAT requis?</b>	Non	<i>Détails :</i>	S.O.
<b>CASPer requis?</b>	Oui	<i>Détails :</i>	S.O.
<b>Admissions reportées?</b>	Non	<i>Détails :</i>	S.O.
<b>Transferts?</b>	Non	<i>Détails :</i>	S.O.

### Programmes combinés :

Aucun

### Détails d'applications :

<i>Date de début :</i>	1 août 2025
<i>Date limite :</i>	Candidats collégiens québécois : 1er mars 2026 Candidats universitaires : 15 novembre 2025
<i>Frais :</i>	79,50\$ de base plus 22,25\$ par programme régulier
<i>Type de formulaire :</i>	Version électronique

### Détails d'entrevues :

<i>Types :</i>	MEM
<i>Date :</i>	25 - 26 avril 2026
<i>Lieu :</i>	À déterminer
<i># En-Province/Hors-de-la-Province/Hors-du-Canada/Total :</i>	À déterminer
<i>Frais :</i>	291,60 \$

### Détails des offres d'admission :

<i>Date :</i>	15 mai 2026
<i>Nombre d'offres :</i>	À déterminer
<i>Dépôt :</i>	300,00 \$
<i>Mode de livraison des offres d'admission :</i>	Courriel

---

Faculté de médecine, UNIVERSITÉ DE MONTRÉAL—Doctorat de 1er cycle en médecine  
(Programme MD)

---

**Pour faire une demande ou obtenir de l'information :**

Université de Montréal,  
CP 6205 succursale Centre-ville,  
Montréal QC H3C 3T5

[admission.umontreal.ca/nous-joindre/](http://admission.umontreal.ca/nous-joindre/)

**Tél :** 514-343-7076

**Télé :** Aucun

**Courriel :** [admission-md@umontreal.ca](mailto:admission-md@umontreal.ca)

**Site Web :** [www.medecine.umontreal.ca](http://www.medecine.umontreal.ca) et  
[www.md.umontreal.ca](http://www.md.umontreal.ca)

**Apps :** [admission.umontreal.ca/programmes/  
doctorat-de-1er-cycle-en-medecine/](http://admission.umontreal.ca/programmes/doctorat-de-1er-cycle-en-medecine/)

---

## ANNÉE DE LA DEMANDE D'ADMISSION

	2019/20	2020/21	2021/22	2022/23	2023/24
<b>Statistiques relatives aux candidats : Montréal (Programme MD)</b>					
Offre et inscription	78	92	99	113	123
Offre d'admission reportée	0	0	0	0	0
Offre refusée	11	23	28	23	40
Aucune offre	606	577	610	792	712
Total des demandes	695	692	737	928	875

<b>TAUX DE SUCCÈS (%) PAR LIEU DE RÉSIDENCE</b>					
Québec	13.3	17.5	17.7	14.8	19.1
Autre province/territoire canadien	0.0	0.0	8.0	4.5	5.0
Étranger	0.0	0.0	7.7	17.6	11.1
Toutes les demandes à Montréal (Programme MD) <sup>1</sup>	12.8	16.6	17.2	14.7	18.6

<sup>1</sup> La province de Québec impose des restrictions quant au nombre de places attribuées aux autres résidents au Canada et aux résidents hors Canada. La répartition est répartie entre les quatre facultés de médecine lors de chaque cycle d'admission.

Taux de réussite : Pourcentage de candidats ayant reçu au moins une offre d'admission, qu'elle ait été ultérieurement inscrite, refusée ou reportée.

« Individuels de la province » désigne les citoyens canadiens et les résidents permanents résidant dans la même province que la faculté. « Autres Canadiens » désigne les citoyens canadiens et les résidents permanents résidant à l'extérieur de la province où se trouve la faculté. « Étrangers » désigne les candidats qui ne sont ni citoyens canadiens ni résidents permanents, y compris les titulaires d'un visa étudiant, les réfugiés et les demandeurs d'asile. »

Remarque : Une valeur de 0 signifie que des candidats ont été signalés, mais qu'aucun n'a reçu d'offre.

## Faculty of Medicine and Health Sciences, MCGILL UNIVERSITY—Med-P Program

<b>Length of Program (Years):</b>	1	<i>Notes:</i> 1 preparatory year (Med-P) followed by 4 years MD-CM.
<b>Language of Instruction:</b>	English and French	<i>Notes:</i> English courses on Montreal campus, French courses on Outaouais campus, clinical placements in bilingual or Francophone settings from year 1 of MDCM program.
<b>Testing of Language Proficiency:</b>	Yes	<i>Notes:</i> French-language proficiency is a pre-admission requirement for students starting the MD-CM Program or Med-P qualifying year. Intermediate (B2) proficiency required for Montreal Campus, Advanced (C1) required for Campus Outaouais. <a href="http://www.mcgill.ca/medadmissions/applying/requirements/elements/language-proficiency">www.mcgill.ca/medadmissions/applying/requirements/elements/language-proficiency</a> .
<b>New Admissions into Year One:</b>	91	<i>Notes:</i> New Admissions into the Medicine-Preparatory (Med-P) program

### First-Year Tuition

- **Canadian Residents:** TBD
- **In-Province Residents:** \$2,967.00<sup>1</sup>
- **Compulsory Fees:** \$2,483.00<sup>1</sup>
- **Visa Students:** TBD
- **Foreign Students:** TBD  
(Above-Quota contract)

### **Tuition Details:**

MED-P Tuition: The preparatory year program fees (\$2,967 tuition, \$2,483 other compulsory fees) are those of the Faculty of Science in which the student is registered for this year. Upon successful completion of the preparatory year, the student will be admitted to the MD-CM program in the Faculty of Medicine and Health Sciences.

The fee data above applies to the Fall 2024 - Winter 2025 academic year. Updated figures are published each summer at: [www.mcgill.ca/student-accounts/tuition-charges/fallwinter-term-tuition-and-fees/undergraduate-fees](http://www.mcgill.ca/student-accounts/tuition-charges/fallwinter-term-tuition-and-fees/undergraduate-fees) (Select Quebec residency and "Bachelor of Science")

### **Year One Position Breakdown:**

Maximum of 20 seats for Outaouais campus, remainder for Montreal campus.

<sup>1</sup> Fee data applies to the Fall 2024 - Winter 2025 academic year

---

## Faculty of Medicine and Health Sciences, MCGILL UNIVERSITY—Med-P Program

---

**Selection Factors:**

Only open to Quebec residents currently completing cégep in Quebec. Invitation to interview is based on Academics (R score) 70%, and non-academic factors (CASPer test 20%, CV 10%). Final selection is based on the interview 100%. See [www.mcgill.ca/medadmissions/applying/categories/roq](http://www.mcgill.ca/medadmissions/applying/categories/roq)

Additional pathways for cégep students have specific selection procedures and are open to candidates from Black and Indigenous communities in Quebec. See [www.mcgill.ca/medadmissions/applying/categories/mcgill-black-candidate-pathway](http://www.mcgill.ca/medadmissions/applying/categories/mcgill-black-candidate-pathway) and [www.mcgill.ca/medadmissions/applying/categories/indigenous](http://www.mcgill.ca/medadmissions/applying/categories/indigenous).

**Academic Criteria:**

A CÉGEP Diplôme d'études collégiales is required at time of admission. Prerequisite courses from the CÉGEP program in Health Sciences include biology, chemistry, mathematics, physics and one organic chemistry course.

**Special Consideration:**

May be given to applicants with extenuating circumstances upon formal request.

<b>Mean GPA:</b>	R-Score: 35.73 <sup>1</sup>	<i>Details:</i>	The lowest competitive R-score invited to interview is 33. The average R-score of applicants advanced to the second step of selection in 2024 was 35.73.
<b>MCAT Required?</b>	No	<i>Details:</i>	N/A
<b>CASPer Required?</b>	Yes	<i>Details:</i>	CASPer test must be taken before the application deadline. CASPer results are only valid for the indicated application cycle, and only for the specified program type. CASPer results are good for only one admissions cycle.
<b>Deferred Admission?</b>	No	<i>Details:</i>	N/A
<b>Transfers?</b>	No	<i>Details:</i>	N/A

**Combined Programs:**

N/A

**Application Details:**

<i>Start Date:</i>	September 1, 2025
<i>Deadline:</i>	March 1, 2026
<i>Fee:</i>	Application fees updated here annually: <a href="http://www.mcgill.ca/student-accounts/tuition-fees/non-tuition-charges/other">www.mcgill.ca/student-accounts/tuition-fees/non-tuition-charges/other</a>
<i>Form Type:</i>	Electronic application process

---

<sup>1</sup> 2026 data will not be available until May 1, 2026. Most recent full cycle always found here: [www.mcgill.ca/medadmissions/prospective/our-statistics](http://www.mcgill.ca/medadmissions/prospective/our-statistics)

---

## Faculty of Medicine and Health Sciences, MCGILL UNIVERSITY—Med-P Program

---

### Interview Details:

<i>Types:</i>	MMI
<i>Date:</i>	April 2026
<i>Location:</i>	Virtual Zoom interviews
<i># In-Province/Out-of-Province/ Out-of-Canada/Total:</i>	384
<i>Fees:</i>	TBD

### Offer of Admission Details:

<i>Date:</i>	May 2026 <sup>1</sup>
<i>Number of Offers:</i>	TBD
<i>Deposit:</i>	\$500.00
<i>Distribution Type:</i>	Applicants can see their decision in the online applicant portal. An email reminder to verify the portal is sent to applicants only if they have not already signed in and consulted their decision.

---

### To Request an Application or More Detailed Information:

No information is provided or accepted by mail; applications can only be submitted online. See [www.mcgill.ca/medadmissions](http://www.mcgill.ca/medadmissions) for all information and link to application.

For email and telephone questions, contact the Undergraduate Medical Admissions office. Virtual and in-person appointments are also available:

[www.mcgill.ca/medadmissions/contact-us](http://www.mcgill.ca/medadmissions/contact-us)

**Tel:** 514-398-3517

**Fax:** N/A

**E-Mail:** [admissions.med@mcgill.ca](mailto:admissions.med@mcgill.ca)

**Website:** [www.mcgill.ca/medadmissions](http://www.mcgill.ca/medadmissions)

**Apps:** [www.mcgill.ca/medadmissions/applying/submitting](http://www.mcgill.ca/medadmissions/applying/submitting)

---

<sup>1</sup> All QC med schools issue offers for this group on the same date mid-May. Final date is determined in January 2026.

## YEAR FOR WHICH ADMISSION WAS SOUGHT

	2019/20	2020/21	2021/22	2022/23	2023/24
<b>Applicant Statistics: McGill (Med-P Program)</b>					
Offered and Registered	72	68	78	77	92
Offered Deferred	0	0	0	0	0
Offer Declined	47	108	17	15	38
Not Offered	747	693	1,058	997	680
Total Applicants	866	869	1,153	1,089	810

<b>SUCCESS RATE (%) BY RESIDENCE</b>					
Québec	13.7	20.3	8.7	8.7	16
Other Canadian	-	-	-	0.0	-
Foreign	-	0.0	0.0	0.0	0.0
All Applicants to McGill (Med-P Program) <sup>1</sup>	13.7	20.3	8.7	8.6	15.9

<sup>1</sup> The MED-P Program is only available for CÉGEP applicants.

**Success Rate:** Percentage of applicants who received at least one offer of admission whether subsequently registered, declined or deferred.

*In-Province* refers to Canadian Citizens and Permanent Residents residing in the same province as the faculty. *Other Canadian* refers to Canadian Citizens and Permanent Residents residing outside the province of the faculty. *Foreign* refers to applicants who are not Canadian Citizens or Permanent Residents, including student visa holders, refugees, and refugee claimants.

**Note:** A dash (—) indicates no applicants were reported for that group. A value of 0 means applicants were reported, but none received an offer.

## Faculty of Medicine and Health Sciences, MCGILL UNIVERSITY—MD-CM Program

<b>Length of Program (Years):</b>	4	<i>Notes:</i>	N/A
<b>Language of Instruction:</b>	English and French	<i>Notes:</i>	English courses on Montreal campus, French courses on Outaouais campus, clinical placements in bilingual or Francophone settings from year 1 of MDCM program.
<b>Testing of Language Proficiency:</b>	Yes	<i>Notes:</i>	French-language proficiency is a pre-admission requirement for students starting the MDCM Program or Med-P qualifying year. Intermediate (B2) proficiency required for Montreal Campus, Advanced (C1) required for Campus Outaouais. <a href="http://www.mcgill.ca/medadmissions/applying/requirements/elements/language-proficiency">www.mcgill.ca/medadmissions/applying/requirements/elements/language-proficiency</a>
<b>New Admissions into Year One:</b>	249	<i>Notes:</i>	N/A

### First-Year Tuition

- **Canadian Residents:** \$25,956.00
- **In-Province Residents:** \$6,231.00
- **Compulsory Fees:** Quebec and Canadian: \$2,952.00, International: \$3,804.00
- **Visa Students:** \$64,382.00
- **Foreign Students:** \$64,382.00  
(Above-Quota contract)

### **Tuition Details:**

The fee data above applies to the first year of the MD-CM program for the Fall 2024 - Winter 2025 academic year. Updated figures are published each summer at: [www.mcgill.ca/student-accounts/tuition-charges/fallwinter-term-tuition-and-fees/undergraduate-fees](http://www.mcgill.ca/student-accounts/tuition-charges/fallwinter-term-tuition-and-fees/undergraduate-fees) (Select "Doctor of Medicine and Master of Surgery" program, and select a Residency cohort)

### **Year One Position Breakdown:**

- 1 position is available for visa (International) students.
- 5 positions are available for Canadian citizens/PRs residing outside Québec, but in Canada.
- 1 position is available for students admitted to the joint Medicine and Oral and Maxillofacial Surgery (MD-OMFS) program.
- A minimum of 1 position for International Medical Graduates (additional positions may be available based on attrition).
- The remaining positions are available for residents of Québec and are distributed among university-level applicants and students who have successfully completed the MED-P year.
- Quebec-resident positions are assigned to the Outaouais campus (38) or the Montreal campus (remainder).
- A maximum of 12 additional positions (shared among the four Québec faculties of medicine) are available to eligible First Nations and Inuit applicants who are residents of Québec (both campuses eligible).

---

## Faculty of Medicine and Health Sciences, MCGILL UNIVERSITY—MD-CM Program

---

**Selection Factors:**

Canadian citizens/permanent residents or visa students (will be required to hold a student authorization to enter Canada) may apply. Invitation to interview is based on Academics (70%), and non-academic factors (CASPer test 20%, CV 10%). Final selection is based on the interview 100%. See

[www.mcgill.ca/medadmissions/applying/categories/roq](http://www.mcgill.ca/medadmissions/applying/categories/roq).

Additional pathways for university-level students have specific selection procedures and are open to candidates from Black (Quebec residents), Indigenous (Quebec or Canadian), and Rural or small communities (located in Quebec). See [www.mcgill.ca/medadmissions/applying/categories/mcgill-black-candidate-pathway](http://www.mcgill.ca/medadmissions/applying/categories/mcgill-black-candidate-pathway), [www.mcgill.ca/medadmissions/applying/categories/indigenous](http://www.mcgill.ca/medadmissions/applying/categories/indigenous) and [www.mcgill.ca/medadmissions/applying/categories/rural-and-small-populations-pathway-rspp](http://www.mcgill.ca/medadmissions/applying/categories/rural-and-small-populations-pathway-rspp)

Quebec residents who are International Medical Graduates applying to the 2-year advanced standing stream must have obtained degree equivalency with the Collège des médecins du Québec, which requires completion of the Medical Council of Canada MCCQE part 1 and NAC tests. IMGs from all residency cohorts applying to the 4-year program must have completed the MCCQE part 1 test.

**Academic Criteria:**

A 4-year Bachelor degree (120 credits) is required at time of admission. Prerequisite courses include a full year with laboratory work in each of general biology, general chemistry and general physics; one semester with laboratory work in organic chemistry. Courses in physiology, biochemistry, cellular and molecular biology and statistics are recommended. Up to 3 prerequisite courses may be in progress during the application year, and must be completed and grades submitted by May 30 of the year of admission.

**Special Consideration:**

May be given to applicants with extenuating circumstances upon formal request.

<b>Mean GPA:</b>	3.89 <sup>1</sup>	<i>Details:</i>	Cumulative grade point averages (CGPA) of at least 3.5 on a 4.0 scale are considered to be within the competitive range. The average cumulative grade point average of applicants invited to interview in the Quebec resident category was 3.89.
<b>MCAT Required?</b>	No	<i>Details:</i>	MCAT scores not accepted.
<b>CASPer Required?</b>	Yes	<i>Details:</i>	CASPer test must be taken before the application deadline. CASPer results are only valid for the indicated application cycle, and only for the specified program type. CASPer results are good for only one admissions cycle.
<b>Deferred Admission?</b>	Yes	<i>Details:</i>	One-year deferral requests will be considered for specific situations. See <a href="http://www.mcgill.ca/medadmissions/after-youve-applied/deferred-admission">www.mcgill.ca/medadmissions/after-youve-applied/deferred-admission</a>
<b>Transfers?</b>	No	<i>Details:</i>	N/A

**Combined Programs:**

MD-CM/PhD, MD-CM/OMFS

---

<sup>1</sup> 2026 data will not be available until May 1, 2026. Most recent full cycle always found here: [www.mcgill.ca/medadmissions/prospective/our-statistics](http://www.mcgill.ca/medadmissions/prospective/our-statistics)

---

## Faculty of Medicine and Health Sciences, MCGILL UNIVERSITY—MD-CM Program

---

### Application Details:

<i>Start Date:</i>	September 1, 2025
<i>Deadline:</i>	November 1, 2025
<i>Fee:</i>	Application fees updated here annually: <a href="http://www.mcgill.ca/student-accounts/tuition-fees/non-tuition-charges/other">www.mcgill.ca/student-accounts/tuition-fees/non-tuition-charges/other</a>
<i>Form Type:</i>	Electronic application process

### Interview Details:

<i>Types:</i>	MMI
<i>Date:</i>	February 1, 2026
<i>Location:</i>	Virtual interviews on Zoom
<i># In-Province/Out-of-Province/ Out-of-Canada/Total:</i>	325/48/11/384 <sup>1</sup>
<i>Fees:</i>	TBD

### Offer of Admission Details:

<i>Date:</i>	Spring 2026
<i>Number of Offers:</i>	TBD
<i>Deposit:</i>	\$500 for Quebec and Canadian residents, \$1,000 for international residents
<i>Distribution Type:</i>	Applicants can see their decision in the online applicant portal. An email reminder to verify the portal is sent to applicants only if they have not already signed in and consulted their decision.

---

### To Request an Application or More Detailed Information:

No information is provided or accepted by mail; applications can only be submitted online. See [www.mcgill.ca/medadmissions](http://www.mcgill.ca/medadmissions) for all information and link to application.

For email and telephone questions, contact the Undergraduate Medical Admissions office. Virtual and in-person appointments are also available: [www.mcgill.ca/medadmissions/contact-us](http://www.mcgill.ca/medadmissions/contact-us)

<b>Tel:</b>	514-398-3517
<b>Fax:</b>	N/A
<b>E-Mail:</b>	<a href="mailto:Admissions.med@mcgill.ca">Admissions.med@mcgill.ca</a>
<b>Website:</b>	<a href="http://www.mcgill.ca/medadmissions">www.mcgill.ca/medadmissions</a> ; <a href="http://www.mcgill.ca/medadmissions/applying/requirements">www.mcgill.ca/medadmissions/applying/requirements</a>
<b>Apps:</b>	<a href="http://www.mcgill.ca/medadmissions/applying/submitting">www.mcgill.ca/medadmissions/applying/submitting</a>

---

<sup>1</sup> Subject to change

## YEAR FOR WHICH ADMISSION WAS SOUGHT

	2019/20	2020/21	2021/22	2022/23	2023/24
<b>Applicant Statistics: McGill (MD-CM Program)</b>					
Offered and Registered	105	127	134	132	147
Offered Deferred	7	7	6	4	4
Offer Declined	18	22	20	17	25
Not Offered	1,814	1,920	2,374	2,251	1,462
Total Applicants	1,944	2,076	2,534	2,404	1,638

<b>SUCCESS RATE (%) BY RESIDENCE</b>					
Québec	10.2	12.5	10.3	9.2	12.7
Other Canadian	2.6	1.7	1.9	2.0	3.7
Foreign	5.5	2.9	2.6	2.9	6.5
All Applicants to McGill (MD-CM Program) <sup>1</sup>	6.7	7.5	6.2	6.4	10.7

<sup>1</sup> The province of Québec has restrictions on both the numbers of positions allocated for other residents in Canada and residents outside Canada. The distribution is apportioned by the four faculties of medicine during each admissions cycle.

**Success Rate:** Percentage of applicants who received at least one offer of admission whether subsequently registered, declined or deferred.

*In-Province* refers to Canadian Citizens and Permanent Residents residing in the same province as the faculty. *Other Canadian* refers to Canadian Citizens and Permanent Residents residing outside the province of the faculty. *Foreign* refers to applicants who are not Canadian Citizens or Permanent Residents, including student visa holders, refugees, and refugee claimants.

## Faculty of Medicine, UNIVERSITY OF OTTAWA

<b>Length of Program (Years):</b>	4	<i>Notes:</i> 7 years for our students registered in our combined MD/PhD program.
<b>Language of Instruction:</b>	English or French	<i>Notes:</i> Once admitted to one language stream, there is no possibility of transferring to the other.
<b>Testing of Language Proficiency:</b>	Yes	<i>Notes:</i> If needed: the language proficiency will be assessed during the interview.
<b>New Admissions into Year One:</b>	183	<i>Notes:</i> Approximately 183 for the fall of 2025.

### First-Year Tuition

<ul style="list-style-type: none"> <li>▪ <b>Canadian Residents:</b> \$25,487.00<sup>1</sup></li> <li>▪ <b>In-Province Residents:</b> \$29,504.00<sup>1</sup></li> <li>▪ <b>Compulsory Fees:</b> \$1,525 (includes ancillary and incidental fees)<sup>1</sup></li> <li>▪ <b>Visa Students:</b> N/A<sup>2</sup></li> <li>▪ <b>Foreign Students:</b> TBD<sup>3</sup> (Above-Quota contract)</li> </ul>	<p><b>Tuition Details:</b> Tuition fees for Canadian residents are different depending on if you are from Ontario or from out-of-province.</p>
---	--

### **Year One Position Breakdown:**

170 students are admitted through the Ministry of Health which includes: up to 7 positions available to Indigenous students; up to 4 to students in the MD/PhD program; 2 available through our social accountability initiative, as well as our Black Students Application Program (BSAP) (no quota)<sup>4</sup>.

In addition to our 170 seats available through the Ministry of Health, we have 8 above-quota positions available through the Consortium national de formation en santé (CNFS) 8 positions, along with additional above-quota positions available through the Department of National Defense, the Government of Nunavut Agreement, and our Kuwait agreement/partnership.

### **Selection Factors:**

Canadian citizens and permanent residents (landed immigrant status) may apply. As per new guidelines from the Ministry of Health, 95% of seats are reserved for In-Province candidates.

### **Academic Criteria:**

3 years full-time university studies leading to a Bachelor's degree is required. Prerequisite courses include: 6 units (credits) in humanities/Social Sciences; 6 units in Biology (Anatomy and Physiology also accepted), 3 units in Organic Chemistry, 3 units in Chemistry, 3 units in Biochemistry and 3 units in Statistics. The lab requirements can be met by either having 6-units worth of courses (indicated above) that include a laboratory component and/or having completed additional course(s) up to 6 units that are exclusively laboratory-based. A minimum Grade of 3.00/4.00 (according to the OMSAS scale) must be attained in all prerequisite courses for a candidate to be considered for admission.

<sup>1</sup> Fees for the 2024-25 academic year – subject to change

<sup>2</sup> Not applicable since we do not admit international students

<sup>3</sup> Only applicable to international students covered under our partnership with Kuwait (tuition fees are determined based on the agreement)

<sup>4</sup> Priority will be given to regional applicants

---

## Faculty of Medicine, UNIVERSITY OF OTTAWA

---

**Special Consideration:**

N/A

<b>Mean GPA:</b>	2024 entry class: 3.93 (cGPA)	<i>Details:</i> Each year, a minimum cumulative grade point average (cGPA) is set for the current application pool. cGPA calculation is based on the last three years of full-time undergraduate studies leading to a University Bachelor's Degree. This includes summer courses taken during that period.
<b>MCAT Required?</b>	No	<i>Details:</i> The MCAT is not an admission requirement to the medical program of the University of Ottawa.
<b>CASPer Required?</b>	Yes	<i>Details:</i> Applications to the MD and MD/PhD Programs will not be considered (unless the candidate is applying in the Indigenous or Nunavut pathway) if the CASPer test is not completed. Applicants must take the CASPer test in the language of instruction they applied for. The test must also be taken within the designated dates each year.
<b>Deferred Admission?</b>	Yes	<i>Details:</i> Considered under exceptional circumstances only.
<b>Transfers?</b>	Yes	<i>Details:</i> Please refer to our Policy on Student Transfers, under the section <i>Admission Policies and Procedures - Student Transfer Policy</i> at the following link: <a href="http://www.uottawa.ca/faculty-medicine/undergraduate/admissions/application-process">www.uottawa.ca/faculty-medicine/undergraduate/admissions/application-process</a>

**Combined Programs:**

MD/PhD

**Application Details:**

<i>Start Date:</i>	July 6, 2025 <sup>1</sup>
<i>Deadline:</i>	October 1, 2025
<i>Fee:</i>	TBD <sup>2</sup>
<i>Form Type:</i>	Please visit the OMSAS website: <a href="http://www.ouac.on.ca/omsas/">www.ouac.on.ca/omsas/</a>

**Interview Details:**

<i>Types:</i>	We have a semi-structured panel interview. The panel includes a Physician, a member of the Community (who can also be a Physician) and a fourth-year medical student.
<i>Date:</i>	February - March 2026
<i>Location:</i>	For the 2025 admission year, the interviews were conducted online. TBD for the 2026 admissions cycle
<i># In-Province/Out-of-Province/Out-of-Canada/Total:</i>	On average, 580 candidates are interviewed with a mix of In-Province and Out-of-Province applicants.
<i>Fees:</i>	TBD

---

<sup>1</sup> Application period opens early July; exact date to be confirmed by OMSAS

<sup>2</sup> OMSAS fees are not available yet; institutional fees will be \$135

---

## Faculty of Medicine, UNIVERSITY OF OTTAWA

---

### Offer of Admission Details:

<i>Date:</i>	Second Tuesday in May 2026
<i>Number of Offers:</i>	We anticipate approximately 183 (including English and French streams)
<i>Deposit:</i>	\$1,000.00
<i>Distribution Type:</i>	E-mail

---

### To Request an Application or More Detailed Information:

For application, please visit the OMSAS website at the following link: [www.ouac.on.ca/omsas/](http://www.ouac.on.ca/omsas/)

For more detailed information regarding the medical school, please visit our website: [www.uottawa.ca/faculty-medicine/](http://www.uottawa.ca/faculty-medicine/)

**Tel:** 613-562-5409  
**Fax:** N/A  
**E-Mail:** [Admissmd@uottawa.ca](mailto:Admissmd@uottawa.ca)  
**Website:** [www.uottawa.ca/faculty-medicine/undergraduate/admissions](http://www.uottawa.ca/faculty-medicine/undergraduate/admissions)  
**Apps:** [www.ouac.on.ca/omsas/](http://www.ouac.on.ca/omsas/)

---

## YEAR FOR WHICH ADMISSION WAS SOUGHT

	2019/20	2020/21	2021/22	2022/23	2023/24
<b>Applicant Statistics: Ottawa</b>					
Offered and Registered	N.R.	N.R.	N.R.	168	183
Offered Deferred	N.R.	N.R.	N.R.	0	0
Offer Declined	N.R.	N.R.	N.R.	76	83
Not Offered	N.R.	N.R.	N.R.	4,572	4,687
Total Applicants	N.R.	N.R.	N.R.	4,816	4,953

<b>SUCCESS RATE (%) BY RESIDENCE</b>					
Ontario	N.R.	N.R.	N.R.	5.8	5.9
Other Canadian	N.R.	N.R.	N.R.	3.1	3.8
Foreign	N.R.	N.R.	N.R.	12.5	27.3
All Applicants to Ottawa	N.R.	N.R.	N.R.	5.1	5.4

**Success Rate:** Percentage of applicants who received at least one offer of admission whether subsequently registered, declined or deferred

*In-Province* refers to Canadian Citizens and Permanent Residents residing in the same province as the faculty. *Other Canadian* refers to Canadian Citizens and Permanent Residents residing outside the province of the faculty. *Foreign* refers to applicants who are not Canadian Citizens or Permanent Residents, including student visa holders, refugees, and refugee claimants.

N.R.: Not reported

## Faculté de médecine, UNIVERSITÉ D'OTTAWA

<b>Durée du programme (Ans) :</b>	4	<b>Remarques :</b>	7 ans pour nos étudiants inscrits à notre programme combiné MD/PhD.
<b>Langue d'enseignement :</b>	Anglais ou Français	<b>Remarques :</b>	Notre programme est offert dans les deux langues officielles du Canada : anglais et français. Vous devez choisir une des deux options. Une fois admis, il n'y a aucune possibilité de changer d'un volet à l'autre.
<b>Épreuve de compétence en linguistique :</b>	Oui	<b>Remarques :</b>	Au besoin : la compétence linguistique sera évaluée au cours de l'entrevue.
<b>Nouvelles Admissions en Première Année :</b>	183	<b>Remarques :</b>	Nous prévoyons avoir approximativement 183 étudiants dans notre classe à l'automne 2025.

### Frais de scolarité de première année :

- **Résidents canadiens :** 25 487,00 \$<sup>1</sup>
- **Résidents du Québec :** 29 504,00 \$<sup>1</sup>
- **Frais obligatoires :** 1 525\$ (droits accessoires et droits complémentaires)<sup>1</sup>
- **Étudiants détenteurs d'un visa :** S.O.<sup>2</sup>
- **Étudiants étrangers :** À déterminer<sup>3</sup>  
(Contrat hors quota)

#### Détails des frais de scolarité :

Les frais de scolarité sont les mêmes pour tous les étudiants, quel que soit leur statut géographique, car nous n'admettons pas d'étudiants internationaux.

### Répartition des postes de première année :

170 étudiants sont admis par l'entremise du ministère de la Santé, ce qui comprend : jusqu'à 7 places disponibles pour les étudiants autochtones, jusqu'à 4 places disponibles pour les étudiants du programme combiné M.D./Ph.D., 2 places disponibles dans le cadre de notre initiative en matière de responsabilité sociale et des places disponibles pour notre programme de demande d'admission pour les étudiantes et étudiants noirs (PDAEN) (aucune limite)<sup>4</sup>

En plus des 170 places accordées par le ministère de la Santé, places supplémentaires offertes par le Consortium national de formation en santé (CNFS) - 8 places, par les Forces Armées Canadiennes, par le programme du Nunavut et pour les étudiants admissibles sous le partenariat avec le Kuwait.

### Facteurs de sélection :

Les citoyens canadiens/résidents permanents peuvent présenter leur candidature. Selon les nouvelles lignes directrices du Ministère de la Santé de l'Ontario, 95% des places sont réservées pour les candidates et les candidats de l'Ontario.

<sup>1</sup> En vigueur pour l'année scolaire 2024-25 – sujet à changement

<sup>2</sup> Nous n'admettons pas d'étudiants internationaux

<sup>3</sup> Seulement pour les étudiants admissibles sous le partenariat avec le Kuwait (droits de scolarité selon l'entente)

<sup>4</sup> La priorité sera donnée aux applicant régionaux

## Faculté de médecine, UNIVERSITÉ D'OTTAWA

### Critères d'études :

Trois années d'études universitaires à temps plein d'un programme de premier cycle menant à un baccalauréat sont requises. Les cours préalables incluent : 6 crédits en sciences humaines/sciences sociales, 6 crédits en biologie ou physiologie, 3 crédits en chimie, 3 crédits en chimie organique, 3 crédits en biochimie et 3 crédits en statistique. Les exigences de laboratoire sont d'avoir complété 6 crédits de cours (parmi ceux énumérés dans les exigences de cours) ayant une composante laboratoire ou en ayant complété des cours de laboratoire supplémentaires représentant jusqu'à 6 crédits. Tous les préalables doivent avoir été complétés avec une note minale de 3.00/4.00 (selon l'échelle de notation d'OMSAS) pour que la candidature soit considérée.

### Considération particulière :

S.O.

<b>Moyenne GPA :</b>	La moyenne cumulative globale (MCG) de la classe admise en 2024 est de 3.93	<i>Détails :</i>	Chaque année, une moyenne cumulative globale (MCG) minimale est fixée pour le groupe de candidatures. La MCG minimale est calculée basé sur les trois dernières années d'études universitaires, à temps plein, envers un programme de baccalauréat. Nous incluons également les cours d'été ayant été complétés durant cette même période.
<b>MCAT requis?</b>	Non	<i>Détails :</i>	Le Medical College Admission Test (MCAT) n'est pas une condition d'admission au programme de médecine de l'Université d'Ottawa.
<b>CASPer requis?</b>	Oui	<i>Détails :</i>	Les demandes pour le Programme M.D. et M.D./Ph.D. ne seront pas prises en considération (sauf pour les candidats qui postulent sous le volet autochtone ou Nunavut) si le test CASPer n'a pas été fait. Les candidats doivent passer le test CASPer dans la langue d'enseignement pour laquelle ils font demande. Le test doit également être passé aux dates désignées chaque année.
<b>Admissions reportées?</b>	Oui	<i>Détails :</i>	Envisagées en cas de circonstances exceptionnelles seulement.
<b>Transferts?</b>	Oui	<i>Détails :</i>	Consultez la politique sur le transfert d'étudiants dans la section 'Politiques et procédures d'admission - Politique sur les transferts d'étudiants et d'étudiantes' au lien suivant : <a href="http://www.uottawa.ca/faculte-medecine/premier-cycle/admissions/processus-demande">www.uottawa.ca/faculte-medecine/premier-cycle/admissions/processus-demande</a> .

### Programmes combinés :

MD/PhD

---

## Faculté de médecine, UNIVERSITÉ D'OTTAWA

---

### Détails d'applications :

<i>Date de début :</i>	6 juillet 2025 <sup>1</sup>
<i>Date limite :</i>	1 octobre 2025
<i>Frais :</i>	À déterminer <sup>2</sup>
<i>Type de formulaire :</i>	Consultez le site Web de OMSAS : <a href="http://www.ouac.on.ca/fr/omsas/">www.ouac.on.ca/fr/omsas/</a>

### Détails d'entrevues :

<i>Types :</i>	Nous avons une entrevue semi-structurée de style traditionnelle. Le panel est composé d'un médecin, un membre de la communauté (qui peut également être un médecin) et un étudiant en quatrième année de médecine.
<i>Date :</i>	Février - Mars 2026
<i>Lieu :</i>	Pour l'année d'admission 2025, les entrevues ont lieu en ligne. Ce sera à déterminer pour le cycle d'admission 2026.
<i># En-Province/Hors-de-la-Province/Hors-du-Canada/Total :</i>	Environ 580 candidats sont invités à l'entrevue. Les candidats sont originaires soit de la province de l'Ontario ou de l'extérieur de la province.
<i>Frais :</i>	À déterminer

### Détails des offres d'admission :

<i>Date :</i>	Deuxième mardi du mois de mai 2026
<i>Nombre d'offres :</i>	Nous anticipons admettre un total de 183 étudiants (inclut les deux volets d'enseignement - français et anglais)
<i>Dépôt :</i>	1 000,00 \$
<i>Mode de livraison des offres d'admission :</i>	Courriel

---

### Pour faire une demande ou obtenir de l'information :

Pour les demandes d'admission, veuillez-vous référer au site web d'OMSAS : <a href="http://www.ouac.on.ca/fr/omsas/">www.ouac.on.ca/fr/omsas/</a>	<b>Tél :</b> 613-562-5409
	<b>Télec :</b> S.O.
	<b>Courriel :</b> <a href="mailto:Admissmd@uottawa.ca">Admissmd@uottawa.ca</a>
Pour obtenir de l'information au sujet de notre programme de médecine, veuillez-vous référer à notre site Web : <a href="http://www.uottawa.ca/faculte-medecine/">www.uottawa.ca/faculte-medecine/</a>	<b>Site Web :</b> <a href="http://www.uottawa.ca/faculte-medecine/premier-cycle/admissions">www.uottawa.ca/faculte-medecine/premier-cycle/admissions</a>
	<b>Apps :</b> <a href="http://www.ouac.on.ca/fr/omsas/">www.ouac.on.ca/fr/omsas/</a>

---

<sup>1</sup> La période de dépôt des candidatures débute début juillet; la date exacte reste à confirmer par l'OMSAS

<sup>2</sup> Les frais d'application OMSAS ne sont pas encore déterminés, les frais institutionnels seront de \$135

## ANNÉE DE LA DEMANDE D'ADMISSION

	2019/20	2020/21	2021/22	2022/23	2023/24
<b>Statistiques relatives aux candidats : Ottawa</b>					
Offre et inscription	N.D.	N.D.	N.D.	168	183
Offre d'admission reportée	N.D.	N.D.	N.D.	0	0
Offre refusée	N.D.	N.D.	N.D.	76	83
Aucune offre	N.D.	N.D.	N.D.	4,572	4,687
Total des demandes	N.D.	N.D.	N.D.	4,816	4,953

<b>SUCCESS RATE (%) BY RESIDENCE</b>					
Ontario	N.D.	N.D.	N.D.	5.8	5.9
Autre province/territoire canadien	N.D.	N.D.	N.D.	3.1	3.8
Étranger	N.D.	N.D.	N.D.	12.5	27.3
Toutes les demandes à Ottawa	N.D.	N.D.	N.D.	5.1	5.4

Taux de réussite : Pourcentage de candidats ayant reçu au moins une offre d'admission, qu'elle ait été ultérieurement inscrite, refusée ou reportée.

« Individuels de la province » désigne les citoyens canadiens et les résidents permanents résidant dans la même province que la faculté. « Autres Canadiens » désigne les citoyens canadiens et les résidents permanents résidant à l'extérieur de la province où se trouve la faculté. « Étrangers » désigne les candidats qui ne sont ni citoyens canadiens ni résidents permanents, y compris les titulaires d'un visa étudiant, les réfugiés et les demandeurs d'asile. »

N.D. = Données non disponibles

---

## School of Medicine, QUEEN'S UNIVERSITY

---

<b>Length of Program (Years):</b>	4	<i>Notes:</i> For more information: <a href="https://meds.queensu.ca/academics/mdprogram">meds.queensu.ca/academics/mdprogram</a>
<b>Language of Instruction:</b>	English	<i>Notes:</i> N/A
<b>Testing of Language Proficiency:</b>	Yes	<i>Notes:</i> Required for applicants whose native languages do not include English will be required to obtain satisfactory standing in the Test of English as a Foreign Language (TOEFL) proficiency test as part of the application process. For more information please visit our website: <a href="https://meds.queensu.ca/academics/mdprogram/admissions/eligibility_application_process">meds.queensu.ca/academics/mdprogram/admissions/eligibility_application_process</a>
<b>New Admissions into Year One:</b>	140	<i>Notes:</i> N/A

### First-Year Tuition

- **Canadian Residents:** TBD<sup>1</sup>
- **In-Province Residents:** TBD<sup>1</sup>
- **Compulsory Fees:** TBD<sup>1</sup>
- **Visa Students:** Not eligible
- **Foreign Students:** Not eligible  
(Above-Quota contract)

### **Tuition Details:**

Details regarding fees may be found on the Office of the University Registrar's website:  
<http://www.queensu.ca/registrar/financials/tuition-fees>

---

### **Year One Position Breakdown:**

114 seats are located at our Kingston Campus. 20 seats are located at the Queen's-Lakeridge Health site specifically for the Queen's-Lakeridge Health MD Family Medicine program. Up to an additional 6 supernumerary seats are located at our Kingston Campus for Canadian Forces Members through the Military Medical Training Program (MMTP) Pathway. A minimum of 4 seats are available to Indigenous students through ISAP.

### **Selection Factors:**

GPA, MCAT, CASPer, Autobiographical Sketch, References, MMI and Panel  
Please see OMSAS website: [www.ouac.on.ca/omsas/](http://www.ouac.on.ca/omsas/), as well as our website for more information:  
[meds.queensu.ca/academics/undergraduate/admissions](https://meds.queensu.ca/academics/undergraduate/admissions).

---

<sup>1</sup> Detailed fee information is available at: [www.queensu.ca/registrar/financials/tuition-fees](http://www.queensu.ca/registrar/financials/tuition-fees)

---

## School of Medicine, QUEEN'S UNIVERSITY

---

**Academic Criteria:**

A minimum of 15 full or 30 half university undergraduate level courses which equate to an OMSAS course load weighting of 30. Please see OMSAS website: [www.ouac.on.ca/omsas/](http://www.ouac.on.ca/omsas/), as well as our website for more information: [meds.queensu.ca/academics/mdprogram/admissions](http://meds.queensu.ca/academics/mdprogram/admissions)

**Special Consideration:**

Applies to Indigenous applicants.

<b>Mean GPA:</b>	N/A	<i>Details:</i> The cumulative GPA is used in the assessment of the application. The minimum cumulative GPA to apply is 3.0. The grade point averages fluctuate annually based on the applicant pool. Past minimum grade point average levels are not a predictor of future standards.  Please see the OMSAS website: <a href="http://www.ouac.on.ca/omsas/">www.ouac.on.ca/omsas/</a> , as well as our website for more information: <a href="http://meds.queensu.ca/academics/mdprogram/admissions">meds.queensu.ca/academics/mdprogram/admissions</a>
<b>MCAT Required?</b>	Yes	<i>Details:</i> The MCAT is required, and the test must have been taken within five years of the application deadline. Queen's School of Medicine no longer accepts the Old MCAT test scores.
<b>CASPer Required?</b>	Yes	<i>Details:</i> For more information: <a href="http://meds.queensu.ca/academics/mdprogram/admissions">meds.queensu.ca/academics/mdprogram/admissions</a>
<b>Deferred Admission?</b>	Yes	<i>Details:</i> Considered by committee after acceptance of offer.
<b>Transfers?</b>	No	<i>Details:</i> N/A

**Combined Programs:**

MD/PhD, MD/Master's, and Queen's-Lakeridge Health MD Family Medicine Program

**Application Details:**

<i>Start Date:</i>	July 10, 2025 <sup>1</sup>
<i>Deadline:</i>	October 1, 2025
<i>Fee:</i>	\$135.00
<i>Form Type:</i>	Please see OMSAS website: <a href="http://www.ouac.on.ca/omsas/">www.ouac.on.ca/omsas/</a> , as well as our website for more information: <a href="http://meds.queensu.ca/academics/mdprogram/admissions">meds.queensu.ca/academics/mdprogram/admissions</a>

**Interview Details:**

<i>Types:</i>	MMI, Panel
<i>Date:</i>	January - March 2026
<i>Location:</i>	Virtual

---

<sup>1</sup> Application period opens early July; exact date to be confirmed by OMSAS

---

## School of Medicine, QUEEN'S UNIVERSITY

---

*# In-Province/Out-of-Province/  
Out-of-Canada/Total:* TBD  
*Fees:* TBD

### Offer of Admission Details:

*Date:* See OMSAS Important Dates: [www.ouac.on.ca/guide/omsas-dates/](http://www.ouac.on.ca/guide/omsas-dates/)  
*Number of Offers:* TBD  
*Deposit:* \$1,050.00  
*Distribution Type:* E-mail

---

### **To Request an Application or More Detailed Information:**

Please see OMSAS website:  
[www.ouac.on.ca/omsas/](http://www.ouac.on.ca/omsas/), as well as our website  
for more information:  
[meds.queensu.ca/academics/undergraduate/admissions](http://meds.queensu.ca/academics/undergraduate/admissions)

**Tel:** 613-533-3307

**Fax:** N/A

**E-Mail:** [queensmd@queensu.ca](mailto:queensmd@queensu.ca)

**Website:** [meds.queensu.ca/academics/mdprogram/admissions](http://meds.queensu.ca/academics/mdprogram/admissions)

**Apps:** [www.ouac.on.ca/omsas/](http://www.ouac.on.ca/omsas/)

---

## YEAR FOR WHICH ADMISSION WAS SOUGHT

	2019/20	2020/21	2021/22	2022/23	2023/24
<b>Applicant Statistics: Queen's</b>					
Offered and Registered	N.R.	N.R.	N.R.	N.R.	N.R.
Offered Deferred	N.R.	N.R.	N.R.	N.R.	N.R.
Offer Declined	N.R.	N.R.	N.R.	N.R.	N.R.
Not Offered	N.R.	N.R.	N.R.	N.R.	N.R.
Total Applicants	N.R.	N.R.	N.R.	N.R.	N.R.

<b>SUCCESS RATE (%) BY RESIDENCE</b>					
Ontario	N.R.	N.R.	N.R.	N.R.	N.R.
Other Canadian	N.R.	N.R.	N.R.	N.R.	N.R.
Foreign	N.R.	N.R.	N.R.	N.R.	N.R.
All Applicants to Queen's	N.R.	N.R.	N.R.	N.R.	N.R.

**Success Rate:** Percentage of applicants who received at least one offer of admission whether subsequently registered, declined or deferred

*In-Province* refers to Canadian Citizens and Permanent Residents residing in the same province as the faculty. *Other Canadian* refers to Canadian Citizens and Permanent Residents residing outside the province of the faculty. *Foreign* refers to applicants who are not Canadian Citizens or Permanent Residents, including student visa holders, refugees, and refugee claimants.

N.R.: Not reported

---

## Temerty Faculty of Medicine, UNIVERSITY OF TORONTO

---

<b>Length of Program (Years):</b>	4	<i>Notes:</i> N/A
<b>Language of Instruction:</b>	English	<i>Notes:</i> N/A
<b>Testing of Language Proficiency:</b>	No	<i>Notes:</i> N/A
<b>New Admissions into Year One:</b>	305	<i>Notes:</i> 303 domestic seats (Plus 2 supernumerary)

### First-Year Tuition

- **Canadian Residents:** \$26,200.00
- **In-Province Residents:** \$23,909.00
- **Compulsory Fees:** See *Tuition Details* below
- **Visa Students:** N/A<sup>1</sup>
- **Foreign Students:** \$94,510.00  
(*Above-Quota contract*)

#### **Tuition Details:**

For both campuses, the tuition fee for the 2024-2025 academic year for domestic students entering Year 1 is \$23,909 for Ontario residents and \$26,200 for non-Ontario residents.

For supernumerary stream students entering Year 1 the tuition fee is \$94,510.

The St. George Campus and Mississauga Campus Compulsory Fees are different.

- For DOMESTIC: \$2,326.88 (St. George campus, entering 2024) and \$2,904.84 (Mississauga campus, entering 2024).
- For INTERNATIONAL: \$3,082.88 (St. George campus, entering 2024) and \$3,660.84 (Mississauga campus, entering 2024).

Note: All fees are subject to change pending the Governing Council's review in Spring 2025.

---

#### **Year One Position Breakdown:**

St. George Campus: 244; Mississauga Campus: 59; All Supernumerary (DND only): up to 2.

---

<sup>1</sup> No international admissions for Fall 2026 entry

---

## Temerty Faculty of Medicine, UNIVERSITY OF TORONTO

---

**Selection Factors:**

The 303 domestic positions are allocated to two campuses: 244 at the St. George campus (in downtown Toronto) and 59 at the Mississauga campus (in Mississauga). Students will be assigned to either the Mississauga campus or the St. George campus at the time of offer of admission. At the St. George campus, students will be assigned to one of three academy sites shortly after they accept their offer. The St. George campus includes the FitzGerald, Peters-Boyd and Wightman-Berris Academies. All campus and academy assignments are final and will be for the entire 4 years of study. All students will be able to participate in clinical learning opportunities across the Faculty of Medicine's affiliates. During or after the interview weekends, detailed information regarding the campus and academy structure and method of assignment will be provided. Interviewed applicants will be asked to complete a short survey indicating their preference for one campus over the other, or that they have no preference. Although we cannot guarantee placement at one's first choice of campus or academy, our process is designed to maximize student satisfaction. Canadian citizens/permanent residents or international/visa students may apply.

**Academic Criteria:**

For students studying at an undergraduate program at a Canadian university, a minimum of three years full-time university study (equivalent of 15 full-course-equivalents) is required. Prerequisite courses include two full-course-equivalents in life sciences and one full-course-equivalent in social science or humanities or languages.

**Special Consideration:**

Our MD Program values a diverse applicant pool with students from all academic backgrounds. To acknowledge the academic challenge of undertaking graduate work, applicants pursuing graduate degrees will receive credit for their accomplishments during the file review process. Graduate applicants will receive credit for their graduate work based on the following categories: Doctoral degree conferred, Doctoral degree in progress, Research-based Master's conferred, Research-based Master's in progress, Course-based Master's conferred. Applicants enrolled in a course-based Master's that is in progress will be assessed as undergraduate applicants. Please note that you are not able to update your application after the October 1st deadline. Graduate students must have completed all program requirements, including the successful defence of their thesis (if applicable) by June 30 in the proposed year of entry (this deadline will be strictly enforced).

**Indigenous Student Application Program (ISAP):** Recognizing the commitment to social responsibility in the Faculty's mission, this program has been implemented to increase the number of Indigenous (First Nations, Inuit and Métis) medical students. Members of the Indigenous community (faculty, students and public members) take part in the admissions file review and admission interviews. Applicants to this program must meet the same minimum requirements for MCAT, GPA and course prerequisites as all other applicants. The program does not have a designated quota for admission. Applicants submit materials as per the core MD admissions process along with the following additional materials: 1) self-declared Indigenous status via OMSAS, 2) Proof of Indigenous ancestry (details of documentation may be found on the Admissions website), and 3) a personal essay explaining applicants' community connectedness or intended future community involvement.

**Black Student Application Program (BSAP):** BSAP is an optional application stream for Canadian applicants who self-identify as Black African, Black Caribbean, Black North American, and multi-racial students who have and identify with their Black ancestry. The aim of this application program is to increase and support Black medical student representation at the University of Toronto. Members of the Black community take part in admissions file review and interview processes, including: faculty, physicians, residents, medical students, and public

## Temerty Faculty of Medicine, UNIVERSITY OF TORONTO

members. This program reflects the Faculty of Medicine's strong commitment to diversity as demonstrated in its Diversity Statement. Applicants to this program must meet the same minimum requirements for MCAT, GPA and course prerequisites as all other applicants. The program does not have a designated quota for admission. Applicants submit materials as per the core MD admissions process along with the following additional materials: 1) self-identification as Black African, Black Caribbean, Black North American, or multi-racial student who has and identifies with their Black ancestry via OMSAS, and 2) a personal essay highlighting why the applicant has chosen to apply through this application stream.

<b>Mean GPA:</b>	3.95	<i>Details:</i>	Undergraduate applicants must obtain a minimum grade point average (GPA) of 3.6/4.0 on the Ontario Medical School Application Service (OMSAS) scale. Based on statistics from recent admissions cycles, a minimum GPA of 3.8 is considered competitive. Graduate applicants must obtain a minimum GPA of 3.3/4.0. Based on statistics from recent admissions cycles, a minimum GPA of 3.7 is considered competitive. The average GPA of all successful applicants in 2023/24 was 3.95.
<b>MCAT required?</b>	Yes	<i>Details:</i>	The MCAT is required, and the test must have been written within five years of the application deadline. Only the most recent score is considered. Applicants must meet a threshold score of 125 in each section, with an allowance of 124 in one section. Your MCAT score is not used competitively.
<b>CASPer required?</b>	No	<i>Details:</i>	N/A
<b>Deferred Admission?</b>	Yes	<i>Details:</i>	Not routinely
<b>Transfers?</b>	No	<i>Details:</i>	N/A

**Combined Programs:**  
MD/PhD and MD/MBA

### Application Details:

<i>Start Date:</i>	July 3, 2025 <sup>1</sup>
<i>Deadline:</i>	October 1, 2025
<i>Fee:</i>	\$135.00
<i>Form Type:</i>	See OMSAS section: <a href="http://www.ouac.on.ca/omsas">www.ouac.on.ca/omsas</a>

### Interview Details:

<i>Types:</i>	vMPI
<i>Date:</i>	February, March and April 2026
<i>Location:</i>	Online

<sup>1</sup> Application period opens early July; exact date to be confirmed by OMSAS

---

## Temerty Faculty of Medicine, UNIVERSITY OF TORONTO

---

*# In-Province/Out-of-Province/  
Out-of-Canada/Total:* Minimum 700  
*Fees:* TBD

### Offer of Admission Details:

*Date:* May 12, 2026  
*Number of Offers:* TBD  
*Deposit:* \$1,000.00  
*Distribution Type:* E-mail

---

### **To Request an Application or More Detailed Information:**

See OMSAS section.

For More Detailed Information:

Enrolment Services, Undergraduate Medical  
Education  
University of Toronto  
Medical Sciences Building, Room 2124,  
1 King's College Circle, Toronto ON M5S 1A8

**Tel:** 416-978-7928

**Fax:** N/A

**E-Mail:** [medicine.admiss@utoronto.ca](mailto:medicine.admiss@utoronto.ca)

**Website:** [applymd.utoronto.ca](http://applymd.utoronto.ca)

**Apps:** [www.ouac.on.ca/omsas/](http://www.ouac.on.ca/omsas/)

---

## YEAR FOR WHICH ADMISSION WAS SOUGHT

	2019/20	2020/21	2021/22	2022/23	2023/24
<b>Applicant Statistics: Toronto</b>					
Offered and Registered	N.R.	N.R.	N.R.	N.R.	N.R.
Offered Deferred	N.R.	N.R.	N.R.	N.R.	N.R.
Offer Declined	N.R.	N.R.	N.R.	N.R.	N.R.
Not Offered	N.R.	N.R.	N.R.	N.R.	N.R.
Total Applicants	N.R.	N.R.	N.R.	N.R.	N.R.

<b>SUCCESS RATE (%) BY RESIDENCE</b>					
Ontario	N.R.	N.R.	N.R.	N.R.	N.R.
Other Canadian	N.R.	N.R.	N.R.	N.R.	N.R.
Foreign	N.R.	N.R.	N.R.	N.R.	N.R.
All Applicants to Toronto	N.R.	N.R.	N.R.	N.R.	N.R.

---

**Success Rate:** Percentage of applicants who received at least one offer of admission whether subsequently registered, declined or deferred

*In-Province* refers to Canadian Citizens and Permanent Residents residing in the same province as the faculty. *Other Canadian* refers to Canadian Citizens and Permanent Residents residing outside the province of the faculty. *Foreign* refers to applicants who are not Canadian Citizens or Permanent Residents, including student visa holders, refugees, and refugee claimants.

N.R.: Not reported

---

## Michael G. DeGroote School of Medicine, MCMaster UNIVERSITY

---

<b>Length of Program (Years):</b>	3	<i>Notes:</i> N/A
<b>Language of Instruction:</b>	English	<i>Notes:</i> N/A
<b>Testing of Language Proficiency:</b>	Yes	<i>Notes:</i> N/A
<b>New Admissions into Year One:</b>	217	<i>Notes:</i> McMaster will welcome first year students into the program on August 10, 2026

### First-Year Tuition

- **Canadian Residents:** \$29,963.78
- **In-Province Residents:** \$25,130.00
- **Compulsory Fees:** \$1,000.00
- **Visa Students:** TBD<sup>1</sup>
- **Foreign Students:** TBD<sup>1</sup>  
(Above-Quota contract)

#### **Tuition Details:**

Tuition can be made in three installments – September, January, and May.

---

#### **Year One Position Breakdown:**

153 positions in the Hamilton campus; 32 positions in the Waterloo Regional Campus and 32 positions in the Niagara Campus.

#### **Selection Factors:**

McMaster uses a formulaic approach to determine invitation to interview (32% UG GPA; 32% MCAT CARS; 32% CASPer and up to 4% Grad Degree). For advancement to full file review/offer of admission, the formula is: 70% MMI scores; 15% GPA; 15% MCAT CARS. All applicants invited to the MMI (Multiple Mini Interview) will be asked to rank their site choice or indicate no preference. Offer of admission will be made from the master rank list irrespective of geographical preference. Subsequent to filling the positions, registrants will be offered a position based on their preference and geographical background. The offer of admission will be binding to a specific site. Canadian citizen/permanent residents or visa students may apply.

#### **Academic Criteria:**

Three years (30 semester credits) of undergraduate university education is required, in any field of study.

---

<sup>1</sup> As of 2026, admitting non-Canadian students may no longer be permitted

---

## Michael G. DeGroot School of Medicine, MCMaster UNIVERSITY

---

**Special Consideration:**

Indigenous applicants who wish to self-identify must submit a FIAP (Facilitated Indigenous Admissions Process) application which is reviewed by our Indigenous Health Task Force. Indigenous applicants must meet all academic criteria above but are considered in a separate pool.

In the 2022/23 application cycle, McMaster introduced BESt (Black Equity Stream). All applicants applying through BESt must complete the OMSAS application and meet all minimum requirements. A supplementary application, consisting of a personal essay to describe their interest in applying through BESt is also required. The personal essay should focus on their experience - it is not scored but assists us in determining their suitability under this stream.

Beginning 2022/23 applicants to McMaster MD Program can request consideration of their GPA where an unknown, undiagnosed and/or unaccommodated disability may have resulted in grades that disadvantaged the applicant. The request is made through the OMSAS application - additional information can be found at [www.ouac.on.ca/omsas](http://www.ouac.on.ca/omsas).

<b>Mean GPA:</b>	3.90	<i>Details:</i>	The minimum GPA considered is 3.00 on the 4.00 OMSAS scale. The mean GPA of those accepted in the 2022/23 application cycle was 3.90.
<b>MCAT Required?</b>	Yes	<i>Details:</i>	The MCAT is required – McMaster uses only the CARS score and the minimum score is 123.
<b>CASPer Required?</b>	Yes	<i>Details:</i>	All applicants must write CASPer. The scores comprise one third of the formula used to determine invitation to interview (along with GPA and MCAT CARS - a small amount of extra weighing is given to those with a completed and conferred graduate degree).
<b>Deferred Admission?</b>	Yes	<i>Details:</i>	On a case-by-case basis
<b>Transfers?</b>	No	<i>Details:</i>	N/A

**Combined Programs:**

MD/PhD

**Application Details:**

<i>Start Date:</i>	On or about July 1st annually <sup>1</sup>
<i>Deadline:</i>	October 1, 2025
<i>Fee:</i>	\$350.00
<i>Form Type:</i>	Application is done through the Ontario Medical School Application Services website at <a href="http://www.ouac.on.ca/omsas">www.ouac.on.ca/omsas</a> . This opens in early July and applications must be submitted by 4:30 EST on October 1st.

---

<sup>1</sup> Application period opens early July; exact date to be confirmed by OMSAS

---

## Michael G. DeGroote School of Medicine, MCMaster UNIVERSITY

---

### Interview Details:

<i>Types:</i>	MMI
<i>Date:</i>	March/April 2026
<i>Location:</i>	Virtual
<i># In-Province/Out-of-Province/ Out-of-Canada/Total:</i>	In 2026: 570 interviewees. 540 (95% of interview spots) are for In-Province and 30 (5% of interview spots) are for Outside Ontario which includes International.
<i>Fees:</i>	TBD

### Offer of Admission Details:

<i>Date:</i>	Second Tuesday in May 2026
<i>Number of Offers:</i>	217 plus waitlist (approximately 50-100 depending upon 5-year decline rate).
<i>Deposit:</i>	\$1,000.00
<i>Distribution Type:</i>	E-mail

---

### To Request an Application or More Detailed Information:

See OMSAS section.

For More Detailed Information:  
contact the MD Admissions Office at  
[mdadmit@mcmaster.ca](mailto:mdadmit@mcmaster.ca)

1280 Main Street West,  
Michael DeGroote Centre for Learning and  
Discovery (MDCL) - 3104  
Hamilton, ON L8S 4K1

**Tel:** 905-525-9140 ext.: 22235  
**Fax:** 905-546-0349  
**E-Mail:** [mdadmit@mcmaster.ca](mailto:mdadmit@mcmaster.ca)  
**Website:** [ugme.healthsci.mcmaster.ca](http://ugme.healthsci.mcmaster.ca)  
**Apps:** [www.ouac.on.ca/omsas/](http://www.ouac.on.ca/omsas/)

---

## YEAR FOR WHICH ADMISSION WAS SOUGHT

	2019/20	2020/21	2021/22	2022/23	2023/24
<b>Applicant Statistics: McMaster</b>					
Offered and Registered	N.R.	N.R.	N.R.	N.R.	N.R.
Offered Deferred	N.R.	N.R.	N.R.	N.R.	N.R.
Offer Declined	N.R.	N.R.	N.R.	N.R.	N.R.
Not Offered	N.R.	N.R.	N.R.	N.R.	N.R.
Total Applicants	N.R.	N.R.	N.R.	N.R.	N.R.

<b>SUCCESS RATE (%) BY RESIDENCE</b>					
Ontario	N.R.	N.R.	N.R.	N.R.	N.R.
Other Canadian	N.R.	N.R.	N.R.	N.R.	N.R.
Foreign	N.R.	N.R.	N.R.	N.R.	N.R.
All Applicants to McMaster	N.R.	N.R.	N.R.	N.R.	N.R.

**Success Rate:** Percentage of applicants who received at least one offer of admission whether subsequently registered, declined or deferred

*In-Province* refers to Canadian Citizens and Permanent Residents residing in the same province as the faculty. *Other Canadian* refers to Canadian Citizens and Permanent Residents residing outside the province of the faculty. *Foreign* refers to applicants who are not Canadian Citizens or Permanent Residents, including student visa holders, refugees, and refugee claimants.

N.R.: Not reported

---

## Schulich School of Medicine & Dentistry, WESTERN UNIVERSITY

---

<b>Length of Program (Years):</b>	4	<i>Notes: N/A</i>
<b>Language of Instruction:</b>	English	<i>Notes: N/A</i>
<b>Testing of Language Proficiency:</b>	No	<i>Notes: N/A</i>
<b>New Admissions into Year One:</b>	187	<i>Notes: N/A</i>

### First-Year Tuition

- **Canadian Residents:** \$29,482.64<sup>1</sup>
- **In-Province Residents:** \$25,702.64<sup>1</sup>
- **Compulsory Fees:** \$1,503.00<sup>1</sup>
- **Visa Students:** N/A
- **Foreign Students:** TBD<sup>1</sup>  
(Above-Quota contract)

### **Tuition Details:**

TBD

---

### **Year One Position Breakdown:**

187 positions include up to 5 position available to Indigenous applicants and up to 1 position available to applicants to the oral maxillofacial surgery program. Up to 3 supernumerary seats in the Medical Military Training Program.

### **Selection Factors:**

146 in London and 41 at the Windsor campus. Applications for both campuses will be processed by the Schulich School of Medicine & Dentistry, Western University, and will be subject to the same admission criteria.

### **Academic Criteria:**

Our school is committed to enrolling self-directed, motivated, resilient students who reflect the diversity of the patients they serve, and who demonstrate compassion and advocacy for others. To help with this goal, we would like to learn more about our applicants through their life experiences and the activities they have participated in. Through our Western Autobiographical Sketch (ABS) applicants are asked to link their activities and life experiences to 4 domains: Teamwork and Leadership, Exposure to Diversity, Social Accountability and Social Responsibility, and Self-directed Learning, Problem Solving and Critical Inquiry. To ensure a holistic approach, this Sketch, along with GPA and MCAT, helps us determine who should be selected for interview.

Applicants must have a minimum of three years of and undergraduate degree from a recognized university.

Applicants may be in the third year of a four-year degree at the time of application. There are no prerequisite courses.

---

<sup>1</sup> Update not available yet - subject to change later

## Schulich School of Medicine & Dentistry, WESTERN UNIVERSITY

Please note the admission policy is reviewed annually and the admission requirements for previous years may not apply. The University reserves the right to review and change the admission requirements at any time without notice.

We encourage ALL applicants (regardless of ethnicity, age, gender identity, socioeconomic status, faith, etc.) to apply to Schulich Medicine.

Effective July 1, 2019, Schulich Medicine has implemented an ACCESS pathway. The ACCESS pathway is for those applicants who have been adversely impacted by circumstances that created a disadvantage. These may include medical, sociocultural, and/or financial barrier(s). Those who apply through the ACCESS pathway may be considered for MCAT flexibility using the same criteria as set for our Southwestern Ontario stream ([www.schulich.uwo.ca/med\\_dent\\_admissions/medicine/southwestern\\_ontario\\_applicants.html](http://www.schulich.uwo.ca/med_dent_admissions/medicine/southwestern_ontario_applicants.html)). The MCAT criteria are re-set annually based on the competitiveness of the applicant pool.

### Special Consideration:

Applies to applicants who have indicated on their application they are from designated communities in Southwestern Ontario, from Indigenous communities, have applied through the Military Medical Training Program or the ACCESS pathway for those applicants who have been adversely impacted by circumstances that created a disadvantage.

<b>Mean GPA:</b>	3.7/4.0	<i>Details:</i>	The minimum acceptable grade point average in each of two years of the undergraduate degree was 3.70 on a 4.0 scale for the 2020 entering class. Due to the impact of COVID-19 being variable across universities and countries, in fairness to all applicants the Winter 2020 term will not be used for GPA calculation.
<b>MCAT Required?</b>	Yes	<i>Details:</i>	Applicants must have written the MCAT version introduced in April 2015 and must submit their most recent results. Schulich Medicine requires the MCAT to be written prior to the deadline of October 1st. MCAT cut offs vary from year to year and are dependent on the competitiveness of the applicant pool.
<b>CASPer Required?</b>	No	<i>Details:</i>	N/A
<b>Deferred Admission?</b>	Yes	<i>Details:</i>	Considered only on the basis of appeal to applicants who have progressed through the regular Admissions cycle and have received an offer of admission. Individuals requesting deferred admission must submit a request in writing to the Admissions Office.
<b>Transfers?</b>	No	<i>Details:</i>	Transfers are no longer accepted.

### Combined Programs:

MD/PhD (Western campus only), Oral Maxillofacial Surgery (MD/MSc)

---

## Schulich School of Medicine & Dentistry, WESTERN UNIVERSITY

---

### Application Details:

<i>Start Date:</i>	Subject to change <sup>1</sup>
<i>Deadline:</i>	October 1, 2025
<i>Fee:</i>	\$125 <sup>2</sup>
<i>Form Type:</i>	See OMSAS section: <a href="http://www.ouac.on.ca/omsas">www.ouac.on.ca/omsas</a>

### Interview Details:

<i>Types:</i>	Panel interview
<i>Date:</i>	February/March 2026
<i>Location:</i>	Virtual
<i># In-Province/Out-of-Province/ Out-of-Canada/Total:</i>	Approximately 700
<i>Fees:</i>	TBD

### Offer of Admission Details:

<i>Date:</i>	May 10, 2025
<i>Number of Offers:</i>	TBD
<i>Deposit:</i>	\$1,000.00
<i>Distribution Type:</i>	E-mail

---

### To Request an Application or More Detailed Information:

See OMSAS section: <a href="http://www.ouac.on.ca/omsas">www.ouac.on.ca/omsas</a>	<b>Tel:</b>	519-661-3744
For more detailed information:	<b>Fax:</b>	519-850-2360
Admissions, Schulich School of Medicine & Dentistry, Western University, Health Sciences Addition H103, 1151 Richmond St., London ON, N6A 5C1	<b>E-Mail:</b>	<a href="mailto:admissions.medicine@schulich.uwo.ca">admissions.medicine@schulich.uwo.ca</a>
	<b>Website:</b>	<a href="http://www.schulich.uwo.ca">www.schulich.uwo.ca</a>
	<b>Apps:</b>	TBD

---

<sup>1</sup> Application period opens early July; exact date to be confirmed by OMSAS

<sup>2</sup> Update not available yet - subject to change later

## YEAR FOR WHICH ADMISSION WAS SOUGHT

	2019/20	2020/21	2021/22	2022/23	2023/24
<b>Applicant Statistics: Western</b>					
Offered and Registered	N.R.	N.R.	N.R.	N.R.	N.R.
Offered Deferred	N.R.	N.R.	N.R.	N.R.	N.R.
Offer Declined	N.R.	N.R.	N.R.	N.R.	N.R.
Not Offered	N.R.	N.R.	N.R.	N.R.	N.R.
Total Applicants	N.R.	N.R.	N.R.	N.R.	N.R.

<b>SUCCESS RATE (%) BY RESIDENCE</b>					
Ontario	N.R.	N.R.	N.R.	N.R.	N.R.
Other Canadian	N.R.	N.R.	N.R.	N.R.	N.R.
Foreign	N.R.	N.R.	N.R.	N.R.	N.R.
All Applicants to Western	N.R.	N.R.	N.R.	N.R.	N.R.

---

**Success Rate:** Percentage of applicants who received at least one offer of admission whether subsequently registered, declined or deferred

*In-Province* refers to Canadian Citizens and Permanent Residents residing in the same province as the faculty. *Other Canadian* refers to Canadian Citizens and Permanent Residents residing outside the province of the faculty. *Foreign* refers to applicants who are not Canadian Citizens or Permanent Residents, including student visa holders, refugees, and refugee claimants.

N.R.: Not reported

---

## NORTHERN ONTARIO SCHOOL OF MEDICINE UNIVERSITY

---

<b>Length of Program (Years):</b>	4	<i>Notes:</i>	N/A
<b>Language of Instruction:</b>	English	<i>Notes:</i>	Generally, the language of instruction is English; however, some components relating to the Francophone Curricular initiatives and other extracurricular initiatives will be provided in French.
<b>Testing of Language Proficiency:</b>	Yes	<i>Notes:</i>	Applicants to the Francophone Admission Stream are required to demonstrate their proficiency in spoken French by providing either:  Proof of successful completion of a postsecondary degree in French (majority (80%) of courses in French) within five years of the application deadline  OR  A copy of one of the following certifications obtained within five years of the application deadline: Canadian Federal Government Level C Certification DELF Diploma – Level B2 or higher DALF Diploma – Level C1 or C2 TEF – Level B2 or higher.
<b>New Admissions into Year One:</b>	Up to 88 seats	<i>Notes:</i>	N/A

### First-Year Tuition

- **Canadian Residents:** \$23,247.00
- **In-Province Residents:** \$23,247.00
- **Compulsory Fees:** \$976.73
- **Visa Students:** N/A
- **Foreign Students:** N/A  
(Above-Quota contract)

### **Tuition Details:**

Total annual fees: \$24,214.73

---

### **Year One Position Breakdown:**

55 Sudbury Campus, 33 Thunder Bay

Includes a minimum of 6 designated positions available to Indigenous students. MMTP is paused at this time.

---

## NORTHERN ONTARIO SCHOOL OF MEDICINE UNIVERSITY

---

**Selection Factors:**

The 88 positions are allocated to two campuses: Thunder Bay (33) and Sudbury (55). Candidates who are invited for an interview will be asked to indicate their preferred campus. There is no guarantee that all students will be offered a seat at their preferred campus. Canadian citizens/permanent residents may apply. Selection will favour those who are likely to thrive in the challenging northern and rural learning environments, including applicants from within Northern Ontario, rural and remote areas in the rest of Canada and Indigenous and Francophone applicants.

**Academic Criteria:**

The minimum requirement is a 4-year undergraduate university degree or equivalent in any discipline from a recognized Canadian university or equivalent. No preference is given to a particular discipline over another. While there are no course requirements, the school values applicants who present evidence of a broad undergraduate education. Applicants with majors in science will be expected to have completed at least two full-course equivalents in arts, social sciences and/or humanities within their degree programs, while applicants pursuing majors in arts, social sciences and/or humanities will be expected to have completed at least two full-course equivalents in science within their degree program.

**Special Consideration:**

NOSM University aims to admit a class whose profile reflects the demographics of the population of Northern Ontario. This aim includes the commitment to recruiting Indigenous and Francophone students, those who have been structurally marginalized, and those with a strong desire to live and work in Northern Ontario or rural and remote areas in the rest of Canada. All applicants to the NOSM University UME Program are considered for admission through the General Admission Stream unless they have applied to one or more of the following streams: Indigenous Admission Stream; Francophone Admission Stream; Black Admission Stream.

<b>Mean GPA:</b>	3.76/4.0	<i>Details:</i>	The minimum acceptable grade point average is 3.0 on a 4.0 scale. The mean grade point average of successful applicants in 2024 was 3.76.
<b>MCAT Required?</b>	No	<i>Details:</i>	N/A
<b>CASPer Required?</b>	No	<i>Details:</i>	N/A
<b>Deferred Admission?</b>	Yes	<i>Details:</i>	Case by case
<b>Transfers?</b>	No	<i>Details:</i>	Not considered due to the distributed nature of the curriculum, all NOSM students must complete all four years of the program.

**Combined Programs:**

N/A

---

## NORTHERN ONTARIO SCHOOL OF MEDICINE UNIVERSITY

---

### Application Details:

<i>Start Date:</i>	Subject to change <sup>1</sup>
<i>Deadline:</i>	October 1, 2025
<i>Fee:</i>	\$125.00
<i>Form Type:</i>	See OMSAS section: <a href="http://www.ouac.on.ca/omsas">www.ouac.on.ca/omsas</a>

### Interview Details:

<i>Types:</i>	Virtual asynchronous MMI and Virtual Live Panel
<i>Date:</i>	Late February / Early March
<i>Location:</i>	Online
<i># In-Province/Out-of-Province/ Out-of-Canada/Total:</i>	Total: 320
<i>Fees:</i>	TBD

### Offer of Admission Details:

<i>Date:</i>	May 2026
<i>Number of Offers:</i>	88
<i>Deposit:</i>	\$1,000.00
<i>Distribution Type:</i>	E-mail

---

### To Request an Application or More Detailed Information:

[admissions@nosm.ca](mailto:admissions@nosm.ca)

**Tel:** 1-800-461-8777  
**Fax:** 807-766-7368  
**E-Mail:** [admissions@nosm.ca](mailto:admissions@nosm.ca)  
**Website:** [www.nosm.ca](http://www.nosm.ca)  
**Apps:** [www.ouac.on.ca/omsas](http://www.ouac.on.ca/omsas)

---

<sup>1</sup> Application period opens early July; exact date to be confirmed by OMSAS

## YEAR FOR WHICH ADMISSION WAS SOUGHT

	2019/20	2020/21	2021/22	2022/23	2023/24
<b>Applicant Statistics: NOSM University</b>					
Offered and Registered	N.R.	N.R.	N.R.	N.R.	N.R.
Offered Deferred	N.R.	N.R.	N.R.	N.R.	N.R.
Offer Declined	N.R.	N.R.	N.R.	N.R.	N.R.
Not Offered	N.R.	N.R.	N.R.	N.R.	N.R.
Total Applicants	N.R.	N.R.	N.R.	N.R.	N.R.

<b>SUCCESS RATE (%) BY RESIDENCE</b>					
Ontario	N.R.	N.R.	N.R.	N.R.	N.R.
Other Canadian	N.R.	N.R.	N.R.	N.R.	N.R.
Foreign	N.R.	N.R.	N.R.	N.R.	N.R.
All Applicants to NOSM U	N.R.	N.R.	N.R.	N.R.	N.R.

---

**Success Rate:** Percentage of applicants who received at least one offer of admission whether subsequently registered, declined or deferred

*In-Province* refers to Canadian Citizens and Permanent Residents residing in the same province as the faculty. *Other Canadian* refers to Canadian Citizens and Permanent Residents residing outside the province of the faculty. *Foreign* refers to applicants who are not Canadian Citizens or Permanent Residents, including student visa holders, refugees, and refugee claimants.

N.R.: Not reported

---

## Max Rady College of Medicine, Rady Faculty of Health Sciences, UNIVERSITY OF MANITOBA

---

<b>Length of Program (Years):</b>	4	<i>Notes:</i>	Pre-clerkship - Med 1 and Med 2; Clerkship - Med 3 and Med 4
<b>Language of Instruction:</b>	English or French	<i>Notes:</i>	N/A
<b>Testing of Language Proficiency:</b>	Yes	<i>Notes:</i>	There is a bilingual stream in medicine which provides students with the opportunity to complete some parts of their curriculum in French. In Pre-Clerkship, students will complete a Professional Medical French course, and some small group sessions in clinical skills can be offered in French. Additionally, all applicants whose primary language is not English and do not qualify for a waiver under the University of Manitoba's English language proficiency regulations ( <a href="http://umanitoba.ca/admissions/undergraduate/requirements/english-language-proficiency#criteria-for-english-language-proficiency-waivers">umanitoba.ca/admissions/undergraduate/requirements/english-language-proficiency#criteria-for-english-language-proficiency-waivers</a> ) will be required to demonstrate proficiency in English through one of the options listed at: <a href="http://umanitoba.ca/admissions/undergraduate/requirements/english-language-proficiency#english-language-proficiency-test-options">umanitoba.ca/admissions/undergraduate/requirements/english-language-proficiency#english-language-proficiency-test-options</a> .
<b>New Admissions into Year One:</b>	130 <sup>1</sup>	<i>Notes:</i>	N/A

### First-Year Tuition

- **Canadian Residents:** \$12,500.00
- **In-Province Residents:** \$12,500.00
- **Compulsory Fees:** TBD<sup>1</sup>
- **Visa Students:** N/A
- **Foreign Students:** N/A  
(Above-Quota contract)

### **Tuition Details:**

\$12,500 per year

---

### **Year One Position Breakdown:**

Approximately ninety-five percent (95%) will be filled by residents of Manitoba and up to five percent (5%) by those from out-of-province. These percentages include students who have declared their First Nations, Metis or Inuit heritage. All students who receive an offer are provided with the opportunity to join the Bilingual stream. A maximum of 8 spots are available regardless of which applicant pool they received their offer.

---

<sup>1</sup> Update not available yet - subject to change later

## Max Rady College of Medicine, Rady Faculty of Health Sciences, UNIVERSITY OF MANITOBA

---

### **Selection Factors:**

All eligible applicants to the Canadian Indigenous Applicant Pool will be offered an interview.

For all other applicant pools, the Admissions Committee will calculate a composite score to determine an applicant's ranking. The composite score will be modified by the rural, advanced academic, and socioeconomic and cultural diversity coefficient calculated for all eligible applicants.

All applicants who meet the eligibility requirements are ranked by calculating a composite score in the following way:

$(20\% \text{ AGPA} + 50\% \text{ MCAT}^{\circledR} + 30\% \text{ CASPer}^{\circledR}) \times (\text{rural co-efficient if } >0) \times (\text{academic co-efficient if } >0) \times (\text{socioeconomic and cultural diversity co-efficient if } >0)$

### *Ranking of Applicants for offer of Admission*

All applicants who were selected for interview and participated in the interview process are ranked by the Admissions Committee.

1. Manitoba and Out-of-Province Applicant Pools: All applicants who participated in the interview process will be ranked in their respective pool by calculating a composite score in the following way:  $(15\% \text{ AGPA} + 40\% \text{ MCAT}^{\circledR} + 35\% \text{ MMI} + 10\% \text{ CASPer}^{\circledR}) \times (\text{rural co-efficient if } >0) \times (\text{academic co-efficient if } >0) \times (\text{socioeconomic and cultural diversity co-efficient if } >0)$ ;
2. Canadian Indigenous Applicant Pool: Offers of admission will be extended to applicants who are recommended to the Admissions Committee by the Canadian Indigenous Applicant Pool panel, regardless of composite score of MMI results.

### **Academic Criteria:**

1. Bachelor's Degree completed no later than June 30, 2026, from a university recognized by the University of Manitoba.
2. Medical College Admission Test (MCAT).
3. Adjusted Grade point Average (AGPA) of 3.30 or higher.
4. Situational Judgement Test (CASPer<sup>®</sup>)
  - a. Applicants to the Manitoba applicant pool and the Out of Province applicant pool must achieve a threshold CASPer<sup>®</sup> score greater than 1.5 standard deviations below the mean for their respective applicant pool in order to maintain their eligibility
  - b. CASPer<sup>®</sup> shall not be used in the selection of registrants from the Canadian Indigenous applicant pool. However, as applicants from the Canadian Indigenous applicant pool may also be considered in the general applicant pools (Manitoba applicant pool and Out of Province applicant pool) the CASPer<sup>®</sup> must be written as it will be used in the selection in these general pools.
5. Indigenous Course content pre-requisite

## Max Rady College of Medicine, Rady Faculty of Health Sciences, UNIVERSITY OF MANITOBA

### Special Consideration:

TBD

<b>Mean GPA:</b>	3.3/4.5	<i>Details:</i>	Adjusted Grade Point Average (AGPA) of 3.30 or higher on a 4.5 scale.
<b>MCAT Required?</b>	Yes	<i>Details:</i>	Medical College Admission Test (MCAT) completed no earlier than April 2022 and no later than Sept 13, 2025. See the Applicant Admission Requirements for the Max Rady College of Medicine for more information.
<b>CASPer Required?</b>	Yes	<i>Details:</i>	Applicants to the Manitoba applicant pool and the Out of Province applicant pool must achieve a threshold CASPer® score greater than 1.5 standard deviations below the mean for their respective applicant pool in order to maintain their eligibility.
<b>Deferred Admission?</b>	Yes	<i>Details:</i>	<p>Deferral requests will be reviewed only after an offer of admission has been granted, on a case-by-case basis by the Admissions Committee, limited to 1 year in length. Deferral requests will only be considered based on the following criteria:</p> <ul style="list-style-type: none"> <li>• The completion of graduate studies (Master's or PhD), where the degree will be completed by June 30 of the following year.</li> </ul> <p>OR</p> <ul style="list-style-type: none"> <li>• Extenuating personal circumstances, such as illness or significant hardship for self or to a first-degree relative. <ul style="list-style-type: none"> <li>o This will include parents, siblings, children, and spouses.</li> <li>o It will not include second-degree and higher relatives, nor friends.</li> </ul> </li> </ul>
<b>Transfers?</b>	Yes	<i>Details:</i>	Transfer Policy: <a href="http://umanitoba.ca/health-sciences/rady-faculty-health-sciences-policies#max-rady-college-of-medicine">umanitoba.ca/health-sciences/rady-faculty-health-sciences-policies#max-rady-college-of-medicine</a>

### Combined Programs:

No longer provided

### Application Details:

<i>Start Date:</i>	August 15, 2025
<i>Deadline:</i>	October 1, 2025
<i>Fee:</i>	\$100.00
<i>Form Type:</i>	Electronic application process

---

## Max Rady College of Medicine, Rady Faculty of Health Sciences, UNIVERSITY OF MANITOBA

---

### Interview Details:

<i>Types:</i>	MMI/CASPer for Manitoba, Out-of-Province, and Bilingual pools/streams; Panel for the Canadian Indigenous Applicant Pool. Those applying through the Canadian Indigenous Applicant Pool must participate in the MMI/CASPer as well as the Panel.
<i>Date:</i>	February and March 2026
<i>Location:</i>	MMI is virtual; Panel Interview is in person
<i># In-Province/Out-of-Province/ Out-of-Canada/Total:</i>	Total 425 interviews
<i>Fees:</i>	TBD

### Offer of Admission Details:

<i>Date:</i>	May 7, 2026
<i>Number of Offers:</i>	Offers sent until all seats are filled, up to August 20
<i>Deposit:</i>	\$500.00
<i>Distribution Type:</i>	E-mail

---

### **To Request an Application or More Detailed Information:**

Visit our website:	<b>Tel:</b>	204-789-3499
<a href="https://umanitoba.ca/explore/programs-of-study/medicine-md#admission-requirements">umanitoba.ca/explore/programs-of-study/medicine-md#admission-requirements</a>	<b>Fax:</b>	204-789-3911
	<b>E-Mail:</b>	<a href="mailto:UGME.Admissions@umanitoba.ca">UGME.Admissions@umanitoba.ca</a>
	<b>Website:</b>	<a href="https://umanitoba.ca/explore/programs-of-study/medicine-md#admission-requirements">umanitoba.ca/explore/programs-of-study/medicine-md#admission-requirements</a>
	<b>Apps:</b>	<a href="https://apply.umanitoba.ca/apply/">apply.umanitoba.ca/apply/</a>

---

## YEAR FOR WHICH ADMISSION WAS SOUGHT

	2019/20	2020/21	2021/22	2022/23	2023/24
<b>Applicant Statistics: Manitoba</b>					
Offered and Registered	105	110	108	105	N.R.
Offered Deferred	5	1	5	0	N.R.
Offer Declined	23	27	31	32	N.R.
Not Offered	744	721	944	960	N.R.
Total Applicants	877	859	1,088	1,097	N.R.

<b>SUCCESS RATE (%) BY RESIDENCE</b>					
Manitoba	23.0	23.9	22.4	23.1	N.R.
Other Canadian	8.1	7.4	6.1	5.7	N.R.
Foreign	-	-	-	-	N.R.
All Applicants to Manitoba	15.2	16.1	13.2	12.8	N.R.

**Success Rate:** Percentage of applicants who received at least one offer of admission whether subsequently registered, declined or deferred

*In-Province* refers to Canadian Citizens and Permanent Residents residing in the same province as the faculty. *Other Canadian* refers to Canadian Citizens and Permanent Residents residing outside the province of the faculty. *Foreign* refers to applicants who are not Canadian Citizens or Permanent Residents, including student visa holders, refugees, and refugee claimants.

N.R.: Not reported

**Note:** A dash (—) indicates no applicants were reported for that group.

---

## College of Medicine, UNIVERSITY OF SASKATCHEWAN

---

<b>Length of Program (Years):</b> 4	<i>Notes:</i> N/A
<b>Language of Instruction:</b> English	<i>Notes:</i> N/A
<b>Testing of Language Proficiency:</b> Yes	<i>Notes:</i> Applicants whose primary language is not English may be required to present proof of proficiency in English. Information regarding the English language proficiency requirement at the University of Saskatchewan can be found at <a href="https://admissions.usask.ca">admissions.usask.ca</a>
<b>New Admissions into Year One:</b> 108	<i>Notes:</i> N/A

### First-Year Tuition

- **Canadian Residents:** \$21,056<sup>1</sup>
- **In-Province Residents:** \$21,056<sup>1</sup>
- **Compulsory Fees:** \$1,120.48<sup>1</sup>
- **Visa Students:** N/A<sup>2</sup>
- **Foreign Students:** N/A<sup>2</sup>  
(Above-Quota contract)

### **Tuition Details:**

TBD

---

### **Year One Position Breakdown:**

Includes up to 20 positions available to self-identified Indigenous applicants through the Indigenous Admissions Circle (IAC), and 7 positions available for applicants to be considered through the Diversity and Social Accountability Admissions Program (DSAAP).

### **Selection Factors:**

Applicants must be Canadian citizens or permanent residents of Canada.

### **Academic Criteria:**

Please watch the USask College of Medicine website ([medicine.usask.ca/admission-to-the-md-program/how-to-apply.php](https://medicine.usask.ca/admission-to-the-md-program/how-to-apply.php)) for announcement of changes. The updated Applicant Information document will be available at by July 1, 2025.

For application, all applicants will be required to have completed a 4-year degree with all degree requirements completed by April 30th of the year admission is being sought and MCAT (earliest accepted 2021) by the application deadline. Indigenous studies prerequisite required for application in 2025 for entry in 2026.

---

<sup>1</sup> Fees are from the 2024-25 academic year. Update not available yet - subject to change later

<sup>2</sup> Foreign students are not eligible for admission

---

## College of Medicine, UNIVERSITY OF SASKATCHEWAN

---

### Special Consideration:

Applicants that qualify for consideration through the Diversity and Social Accountability Admission Program (DSAAP) will first be ranked in the general pool and could gain admission through this pool to maximize the number of students who qualify and gain admission under the DSAAP.

Applicants wishing to be considered through the Indigenous Admissions Circle (IAC) for the up to 20 available seats, must have their Indigenous Membership/Citizenship verified through the USask Truth Policy.

New for applications in 2025, for entry in 2026, is the Black Student Admission Pathway (BSAP). Self-identified Black applicants may select to apply through this optional pathway utilizing the same admissions requirements and standards as general application.

<b>Mean GPA:</b>	88.76% (incoming 2024)	<i>Details:</i>	The minimum acceptable university academic average (UAA) is 80% for all applicants.
<b>MCAT Required?</b>	Yes	<i>Details:</i>	MCAT scores must be obtained in one sitting prior to the application deadline. The earliest accepted scores for application in 2025 for entry in 2026 are from 2021. The last accepted writing in 2025 and the minimum required total score and section scores are posted in the Applicant Information document for application 2025 for entry in 2026.
<b>CASPer Required?</b>	Yes	<i>Details:</i>	Applicants must have completed one of the acceptable dates listed for University of Saskatchewan College of Medicine Undergraduate MD program for application in 2025 and the score must be distributed to the University of Saskatchewan College of Medicine by the application deadline.
<b>Deferred Admission?</b>	Yes	<i>Details:</i>	Option available for all applicants up to a maximum of 5 in total to complete a graduate or professional program.
<b>Transfers?</b>	No	<i>Details:</i>	N/A

### Combined Programs:

MD/MBA (successful applicants to the MD program may defer admission for one year to complete an MBA degree).

### Application Details:

<i>Start Date:</i>	August 1, 2025
<i>Deadline:</i>	October 1, 2025
<i>Fee:</i>	\$150.00
<i>Form Type:</i>	Online application

---

## College of Medicine, UNIVERSITY OF SASKATCHEWAN

---

### Interview Details:

<i>Types:</i>	MMI, Panel Interview, CASPer, Conversation Circle (Indigenous Admissions Pathway)
<i>Date:</i>	TBD
<i>Location:</i>	MMI (virtual), Panel Interview and Conversation Circles (TBD), CASPer
<i># In-Province/Out-of-Province/ Out-of-Canada/Total:</i>	MMI (2025 - 310 interviewed) and Panel Interview and Conversation Circle (2025 - 262 interviewed)
<i>Fees:</i>	MMI Fee: \$75.00

### Offer of Admission Details:

<i>Date:</i>	May 15, 2026
<i>Number of Offers:</i>	108 in first round of offers
<i>Deposit:</i>	10% of round <sup>1</sup>
<i>Distribution Type:</i>	E-mail

---

### To Request an Application or More Detailed Information:

[med.admissions@usask.ca](mailto:med.admissions@usask.ca)

**Tel:** 306-966-4030

**Fax:** 306-966-2601

**E-Mail:** [med.admissions@usask.ca](mailto:med.admissions@usask.ca)

**Website:** [medicine.usask.ca/index.php](http://medicine.usask.ca/index.php)

**Apps:** [medicine.usask.ca/admission-to-the-md-program/how-to-apply.php](http://medicine.usask.ca/admission-to-the-md-program/how-to-apply.php)

---

<sup>1</sup> Update not available yet - subject to change later

## YEAR FOR WHICH ADMISSION WAS SOUGHT

	2019/20	2020/21	2021/22	2022/23	2023/24
<b>Applicant Statistics: Saskatchewan</b>					
Offered and Registered	96	94	94	92	101
Offered Deferred	6	7	7	3	2
Offer Declined	37	24	42	39	19
Not Offered	425	410	584	655	925
Total Applicants	564	537	727	789	1,047

<b>SUCCESS RATE (%) BY RESIDENCE</b>					
Saskatchewan	34.6	31.4	29.6	25.9	28.9
Other Canadian	14.4	13.3	12	10.6	3.4
Foreign	-	-	-	0.0	0.0
All Applicants to Saskatchewan	24.6	23.3	19.7	17.1	11.7

**Success Rate:** Percentage of applicants who received at least one offer of admission whether subsequently registered, declined or deferred.

*In-Province* refers to Canadian Citizens and Permanent Residents residing in the same province as the faculty. *Other Canadian* refers to Canadian Citizens and Permanent Residents residing outside the province of the faculty. *Foreign* refers to applicants who are not Canadian Citizens or Permanent Residents, including student visa holders, refugees, and refugee claimants.

**Note:** A dash (—) indicates no applicants were reported for that group. A value of 0 means applicants were reported, but none received an offer.

---

## Faculty of Medicine & Dentistry, UNIVERSITY OF ALBERTA

---

<b>Length of Program (Years):</b>	4	<i>Notes: N/A</i>
<b>Language of Instruction:</b>	English	<i>Notes: N/A</i>
<b>Testing of Language Proficiency:</b>	Yes	<i>Notes: N/A</i>
<b>New Admissions into Year One:</b>	192	<i>Notes: N/A</i>

### First-Year Tuition

- **Canadian Residents:** \$13,789.00<sup>1</sup>
- **In-Province Residents:** \$13,789.00<sup>1</sup>
- **Compulsory Fees:** \$1,802.00<sup>1</sup>
- **Visa Students:** TBD
- **Foreign Students:** TBD  
(Above-Quota contract)

---

### **Year One Position Breakdown:**

85% of the positions are reserved for Alberta residents and 15% of the positions are for non-Alberta residents.

The Faculty of Medicine and Dentistry may provide up to thirty positions within quota for the MD program to qualified Rural applicants over and above the Rural applicants who were admitted in the regular process. Candidates will meet normal minimum admission requirements as outlined in Doctor of Medicine (MD) and the approval by the Faculty of Medicine and Dentistry Admissions Committee.

### **Selection Factors:**

Canadian citizens/permanent residents may apply. Selection for admission is based on cumulative grade point average (CGPA), Medical College Admission Test (MCAT), personal activities, reference letters, interview and additional assessments as determined by Admission Commission.

### **Academic Criteria:**

All applicants to the Doctor of Medicine Program must be registered in a baccalaureate degree from a program recognized by the University of Alberta and obtain their degree the year admission is sought or already have completed their degree program.

To be considered for admission, applicants must have achieved a minimum cumulative GPA (cGPA) of 3.3 for Alberta residents or 3.5 for non-Alberta residents and a minimum of 60 transferable units of course weight.

The minimum MCAT score to be eligible to apply for Albertan applicants is 124 in all categories (CPBS, CARS, BBFL, PSBB). The minimum MCAT score to be eligible to apply for non-Albertans is 128 in CARS and 124 in CPBS, BBFL, and PSBB.

---

<sup>1</sup> Update not available yet - subject to change later

---

 Faculty of Medicine & Dentistry, UNIVERSITY OF ALBERTA
 

---

**Special Consideration:**

No

<b>Mean GPA:</b>	3.30/4.0 (AB) or 3.5/4.0 (non-AB)	<i>Details:</i>	The minimum cumulative GPA (cGPA) required to be eligible to apply for Albertan applicants is 3.30 on the UofA 4.0 grading scale.  The minimum cGPA required to be eligible to apply for non-Albertan applicants is 3.50 on the UofA 4.0 grading scale.
<b>MCAT Required?</b>	Yes	<i>Details:</i>	The minimum MCAT score to be eligible to apply for Albertan applicants is 124 in all categories (CPBS, CARS, BBFL, PSBB).  The minimum MCAT score to be eligible to apply for non-Albertans is 128 in CARS and 124 in CPBS, BBFL, and PSBB.
<b>CASPer Required?</b>	Yes <sup>1</sup>	<i>Details:</i>	N/A
<b>Deferred Admission?</b>	Yes	<i>Details:</i>	At discretion of Associate Dean, MD Program.
<b>Transfers?</b>	Yes	<i>Details:</i>	At discretion of Associate Dean, MD Program.

**Combined Programs:**

MD/MBA, MD/PhD, MD (with Special Training in Research), MD/MSc

**Application Details:**

<i>Start Date:</i>	July 1, 2025
<i>Deadline:</i>	October 1, 2025 <sup>1</sup>
<i>Fee:</i>	\$180.00
<i>Form Type:</i>	Electronic application process

**Interview Details:**

<i>Types:</i>	MMI and Panel, Rural Panel Interview
<i>Date:</i>	TBD
<i>Location:</i>	Virtual
<i># In-Province/Out-of-Province/ Out-of-Canada/Total:</i>	TBD
<i>Fees:</i>	TBD

---

<sup>1</sup> Update not available yet - subject to change later

---

## Faculty of Medicine & Dentistry, UNIVERSITY OF ALBERTA

---

### Offer of Admission Details:

*Date:* May 2026  
*Number of Offers:* TBD  
*Deposit:* \$1,000.00  
*Distribution Type:* E-mail

---

### **To Request an Application or More Detailed Information:**

**Website:**  
[www.ualberta.ca/medicine/programs/md/applying-to-medicine/apply-now/index.html](http://www.ualberta.ca/medicine/programs/md/applying-to-medicine/apply-now/index.html)

Admissions Office,  
Undergraduate Medical Education, Faculty of  
Medicine & Dentistry  
University of Alberta  
1-002 Katz Group Centre for Pharmacy and  
Health Research,  
Edmonton AB T6G 2E1

**Tel:** 780-492-6769 or 780-492-9524

**Fax:** 780-492-9531

**E-Mail:** [mdadmission@ualberta.ca](mailto:mdadmission@ualberta.ca)

**Website:** [www.ualberta.ca/medicine/programs/md/applying-to-medicine/index.html](http://www.ualberta.ca/medicine/programs/md/applying-to-medicine/index.html)

**Apps:** [apply.ualberta.ca/apply/](http://apply.ualberta.ca/apply/)

---

## YEAR FOR WHICH ADMISSION WAS SOUGHT

	2019/20	2020/21	2021/22	2022/23	2023/24
<b>Applicant Statistics: U. of Alberta</b>					
Offered and Registered	160	157	169	167	171
Offered Deferred	3	3	0	5	10
Offer Declined	66	40	53	36	43
Not Offered	1,259	1,415	1,580	1,432	1,528
Total Applicants	1,489	1,615	1,802	1,640	1,752

<b>SUCCESS RATE (%) BY RESIDENCE</b>					
Alberta	19.4	15.5	15.4	15.1	16.1
Other Canadian	10.2	7.7	7.5	8.0	8.6
Foreign	-	-	-	-	-
All Applicants to U. of Alberta	15.4	12.4	12.3	12.7	13.4

**Success Rate:** Percentage of applicants who received at least one offer of admission whether subsequently registered, declined or deferred.

*In-Province* refers to Canadian Citizens and Permanent Residents residing in the same province as the faculty. *Other Canadian* refers to Canadian Citizens and Permanent Residents residing outside the province of the faculty. *Foreign* refers to applicants who are not Canadian Citizens or Permanent Residents, including student visa holders, refugees, and refugee claimants.

**Note:** A dash (—) indicates no applicants were reported for that group.

---

## Cumming School of Medicine, UNIVERSITY OF CALGARY

---

<b>Length of Program (Years):</b>	3	<i>Notes: N/A</i>
<b>Language of Instruction:</b>	English	<i>Notes: N/A</i>
<b>Testing of Language Proficiency:</b>	No	<i>Notes: N/A</i>
<b>New Admissions into Year One:</b>	180	<i>Notes: N/A</i>

### First-Year Tuition

- **Canadian Residents:** \$21,567.00<sup>1</sup>
- **In-Province Residents:** \$21,567.00<sup>1</sup>
- **Compulsory Fees:** \$2,087.00<sup>1</sup>
- **Visa Students:** TBD
- **Foreign Students:** TBD  
(Above-Quota contract)

#### **Tuition Details:**

TBD

---

#### **Year One Position Breakdown:**

Eighty-five percent of year one positions were filled by residents of Alberta.

#### **Selection Factors:**

Canadian citizens/permanent residents may apply.

#### **Academic Criteria:**

Two years full-time university/college are required. Although there are no prerequisite courses, applicants are encouraged to consider the courses described on the school's website.

#### **Special Consideration:**

Refer to the applicant manual for special consideration of units/credits completed during the Winter 2020 term.

---

<sup>1</sup> Fees are from the 2024-25 academic year. Update not available yet - subject to change later

---

## Cumming School of Medicine, UNIVERSITY OF CALGARY

---

<b>Mean GPA:</b>	3.90/4.0	<i>Details:</i>	The minimum acceptable GPA is 3.20 for residents of Alberta and 3.80 for residents outside of Alberta on a 4.0-point scale. The mean GPA of successful applicants in 2023/24 was 3.90.
<b>MCAT Required?</b>	Yes	<i>Details:</i>	Minimum 128 on CARS for out of province applicants.
<b>CASPer Required?</b>	No	<i>Details:</i>	N/A
<b>Deferred Admission?</b>	Yes	<i>Details:</i>	N/A
<b>Transfers?</b>	No	<i>Details:</i>	N/A

### Combined Programs:

MD/MBA, MD/MSc, MD/PhD (other combinations are possible)

### Application Details:

<i>Start Date:</i>	July 1, 2025
<i>Deadline:</i>	October 1, 2025 (4:00pm MST)
<i>Fee:</i>	\$150.00
<i>Form Type:</i>	Electronic application

### Interview Details:

<i>Types:</i>	MMI - in-person
<i>Date:</i>	February / March 2026
<i>Location:</i>	Health Sciences Centre
<i># In-Province/Out-of-Province/ Out-of-Canada/Total:</i>	503/105/0
<i>Fees:</i>	TBD

### Offer of Admission Details:

<i>Date:</i>	May 15, 2026
<i>Number of Offers:</i>	TBD
<i>Deposit:</i>	\$1,000.00
<i>Distribution Type:</i>	E-mail

---

### To Request an Application or More Detailed Information:

Office of MD Admissions, Cumming School of  
Medicine  
University of Calgary  
G212, 3330 Hospital Drive NW  
Calgary AB T2N 4N1

**Tel:** 403-220-4262  
**Fax:** 403-210-8148  
**E-Mail:** [ucmedapp@ucalgary.ca](mailto:ucmedapp@ucalgary.ca)  
**Website:** [www.ucalgary.ca/mdprogram/admissions](http://www.ucalgary.ca/mdprogram/admissions)  
**Apps:** [ucan.ucalgary.ca](http://ucan.ucalgary.ca)

---

## YEAR FOR WHICH ADMISSION WAS SOUGHT

	2019/20	2020/21	2021/22	2022/23	2023/24
<b>Applicant Statistics: Calgary</b>					
Offered and Registered	139	134	131	153	165
Offered Deferred	13	12	10	20	24
Offer Declined	115	95	92	91	79
Not Offered	1,335	1,367	1,806	1,574	1,599
Total Applicants	1,602	1,608	2,039	1,838	1,867

<b>SUCCESS RATE (%) BY RESIDENCE</b>					
Alberta	15.0	15.3	11.9	14.5	15.6
Other Canadian	20.8	14.6	10.4	15.8	13.0
Foreign	0.0	0.0	0.0	11.1	33.3
All Applicants to Calgary	16.7	15.0	11.6	14.8	14.9

**Success Rate:** Percentage of applicants who received at least one offer of admission whether subsequently registered, declined or deferred.

*In-Province* refers to Canadian Citizens and Permanent Residents residing in the same province as the faculty. *Other Canadian* refers to Canadian Citizens and Permanent Residents residing outside the province of the faculty. *Foreign* refers to applicants who are not Canadian Citizens or Permanent Residents, including student visa holders, refugees, and refugee claimants.

**Note:** A value of 0 means applicants were reported, but none received an offer.

## Faculty of Medicine, UNIVERSITY OF BRITISH COLUMBIA

<b>Length of Program (Years):</b>	4	<i>Notes:</i> N/A
<b>Language of Instruction:</b>	English	<i>Notes:</i> N/A
<b>Testing of Language Proficiency:</b>	Yes	<i>Notes:</i> All prospective students are required to demonstrate a minimum level of English before they're admitted. <a href="http://you.ubc.ca/applying-ubc/requirements/english-language-competency/">you.ubc.ca/applying-ubc/requirements/english-language-competency/</a>
<b>New Admissions into Year One:</b>	328	<i>Notes:</i> N/A

### First-Year Tuition

- **Canadian Residents:** \$19,995.00
- **In-Province Residents:** \$19,995.00
- **Compulsory Fees:** \$2,510.00  
Includes Textbooks (recommended and required): \$1,853.00
- **Visa Students:** Not accepted - must be Canadian citizen or permanent resident
- **Foreign Students:** Not accepted - must be Canadian citizen or permanent resident  
(Above-Quota contract)

#### **Tuition Details:**

Please see UBC MD Program for more information on compulsory fees and likely costs: [mdprogram.med.ubc.ca/student-affairs/financial-support/cost-of-an-md-student/](http://mdprogram.med.ubc.ca/student-affairs/financial-support/cost-of-an-md-student/)

#### **Year One Position Breakdown:**

Goal of 16 positions to be filled by Indigenous applicants, up to 8 positions available to applicants to the MD/PhD program, and 62 positions available through the Northern and Rural Admissions pathway. A maximum of 33 positions will be available to out-of-province residents.

See website for more information: [mdprogram.med.ubc.ca/admissions/before-you-apply/pathways-to-medicine/](http://mdprogram.med.ubc.ca/admissions/before-you-apply/pathways-to-medicine/)

#### **Selection Factors:**

The 328 positions are allocated to four campuses: 208 at the Vancouver Fraser Medical Program; 40 at the Island Medical Program (in Victoria); 40 at the Northern Medical Program (in Prince George); 40 at the Southern Medical Program (in Kelowna). All positions are filled based on the same selection criteria; however, a rural and remote suitability assessment is also used to consider and assign students to the Northern Medical Program, up to 14 seats at the Southern Medical Program, up to 4 seats at the Island Medical Program, and up to 4 seats at the Vancouver Fraser Medical Program in the Fraser Medical Cohort. Canadian citizens/permanent residents/persons with Canadian refugee status may apply.

#### **Academic Criteria:**

Please review the UBC MD Admissions website for academic criteria. [mdprogram.med.ubc.ca/admissions/before-you-apply/evaluation-criteria/](http://mdprogram.med.ubc.ca/admissions/before-you-apply/evaluation-criteria/).

---

## Faculty of Medicine, UNIVERSITY OF BRITISH COLUMBIA

---

**Special Consideration:**

Indigenous, Northern, Rural, Black Student, and MD/PhD pathways:

The UBC MD Undergraduate Program (MDUP) is committed to being an accessible and inclusive program, and students with disabilities are welcomed, supported, and provided equitable opportunity to successfully complete the program requirements, including the provision of accommodations. The Core Competencies for Entering Medical Students form the basis of the knowledge, skills, and behaviours required to achieve the medical education program objectives, and in conjunction with the academic standards, are requirements for admission to the program.

The UBC Centre for Accessibility assesses requests for accommodation and provides recommendations for disability-related accommodations and programming initiatives designed to remove barriers for students with disabilities and ongoing medical conditions in all aspects of university life. The Disability Accommodation Policy LR7 provides guidance for students, faculty, and staff to understand the process through which accommodations for students with disabilities are provided at the University. We respect a student's lived experience and expertise in their own disability and actively partner with the student to achieve accessibility and access accommodations. Students are reassured that medical information supporting an accommodation request is treated confidentially.

Conversations and communications about restrictions or impairment take place on a "need to know basis" and may be shared with people responsible for providing the requested or required accommodation.

Applicants with disabilities may seek special consideration in the MD Admissions process. In exceptional circumstances, applicants with disabilities may be eligible for special consideration in the calculation of their grades. However, even in these circumstances, applicants must meet the competitive average. To request accommodation, applicants with disabilities must submit the following documents to the Centre for Accessibility by September 15, 2025:

- Special Consideration Form
- Documentation of disability (guidelines on the Centre for Accessibility website)
- A letter outlining the rationale for requesting special consideration

Applicants who receive an interview and seek accommodation during the interview process must submit their request to the Centre for Accessibility by January 6, 2026.

---

 Faculty of Medicine, UNIVERSITY OF BRITISH COLUMBIA
 

---

<b>Mean GPA:</b>	88.82% <sup>1</sup>	<i>Details:</i> The minimum acceptable average for in province applicants is 75% on a 100% scale. The minimum average for out-of-province applicants is 85% (visit the UBC MD website for up-to-date information on minimum academic standing).
<b>MCAT Required?</b>	Yes	<i>Details:</i> Please visit the website for information on MCAT eligibility <a href="https://mdprogram.med.ubc.ca/admissions/before-you-apply/admission-requirements/">mdprogram.med.ubc.ca/admissions/before-you-apply/admission-requirements/</a>
<b>CASPer Required?</b>	No	<i>Details:</i> N/A
<b>Deferred Admission?</b>	Yes	<i>Details:</i> Only granted in exceptional circumstances.
<b>Transfers?</b>	Yes	<i>Details:</i> Students enrolled in a medical program at a university other than UBC may rarely be accepted into the third year of the UBC MD Undergraduate Program by transfer, provided all of the following conditions are met: <ol style="list-style-type: none"> <li>1) Students requesting transfer must be in good standing in a CACMS accredited medical school in Canada</li> <li>2) Students requesting transfer must be eligible for registration with the College of Physicians and Surgeons of British Columbia.</li> <li>3) There is sufficient capacity and resources to accommodate the student.</li> <li>4) There are compelling personal circumstances/need for the transfer.</li> </ol>

The student must also meet all enrolment standards of UBC and the Faculty of Medicine.

Acceptance of transfer students is extremely rare. UBC MD Admissions will post on our website by October 31 of each year if applications for transfer are being accepted. Further information about the requirements and conditions for transfer can be found here: [med-fom-mednet.sites.olt.ubc.ca/files/2022/09/Admission-of-Students-by-Transfer-008.pdf](https://med-fom-mednet.sites.olt.ubc.ca/files/2022/09/Admission-of-Students-by-Transfer-008.pdf)

**Combined Programs:**

MD/PhD

[mdprogram.med.ubc.ca/mdphd/](https://mdprogram.med.ubc.ca/mdphd/)


---

<sup>1</sup> For the 2023 entering class. Update not available yet - subject to change later

---

 Faculty of Medicine, UNIVERSITY OF BRITISH COLUMBIA
 

---

**Application Details:**

<i>Start Date:</i>	Mid-June 2025
<i>Deadline:</i>	September 15, 2025
<i>Fee:</i>	BC Residents: \$129.00 Out-of-Province Applicants: \$206.50 Out-of-Province transcripts (any number): \$38.25
<i>Form Type:</i>	Online Application System <a href="http://mdprogram.med.ubc.ca/admissions/when-you-apply/online-application-system/">mdprogram.med.ubc.ca/admissions/when-you-apply/online-application-system/</a>

**Interview Details:**

<i>Types:</i>	MMI, Panel Interview
<i>Date:</i>	TBD
<i>Location:</i>	TBD
<i># In-Province/Out-of-Province/ Out-of-Canada/Total:</i>	Total 800 <sup>1</sup>
<i>Fees:</i>	TBD

**Offer of Admission Details:**

<i>Date:</i>	May 2026
<i>Number of Offers:</i>	TBD
<i>Deposit:</i>	\$1,000.00
<i>Distribution Type:</i>	E-mail

---

**To Request an Application or More Detailed Information:**

<b>Email:</b> <a href="mailto:admissions.md@ubc.ca">admissions.md@ubc.ca</a>	<b>Tel:</b> 604-822-9911
	<b>Fax:</b> 604-875-4886 (no clinical faxes)
	<b>E-Mail:</b> <a href="mailto:admissions.md@ubc.ca">admissions.md@ubc.ca</a>
	<b>Website:</b> <a href="http://mdprogram.med.ubc.ca/admissions/">mdprogram.med.ubc.ca/admissions/</a>
	<b>Apps:</b> <a href="http://mdprogram.med.ubc.ca/admissions/when-you-apply/online-application-system/">mdprogram.med.ubc.ca/admissions/when-you-apply/online-application-system/</a>

---

<sup>1</sup> Update not available yet - subject to change later

## YEAR FOR WHICH ADMISSION WAS SOUGHT

	2019/20	2020/21	2021/22	2022/23	2023/24
<b>Applicant Statistics: UBC</b>					
Offered and Registered	284	287	284	280	304
Offered Deferred	1	4	10	2	7
Offer Declined	43	37	53	41	55
Not Offered	2,070	2,237	2,525	2,507	2,449
Total Applicants	2,398	2,565	2,872	2,830	2,815

<b>SUCCESS RATE (%) BY RESIDENCE</b>					
British Columbia	19.0	17.6	16.1	16.1	17.5
Other Canadian	6.2	6.3	6.9	5.4	7.6
Foreign	-	-	-	-	0.0
All Applicants to UBC	13.7	12.8	12.1	11.4	12.9

**Success Rate:** Percentage of applicants who received at least one offer of admission whether subsequently registered, declined or deferred.

*In-Province* refers to Canadian Citizens and Permanent Residents residing in the same province as the faculty. *Other Canadian* refers to Canadian Citizens and Permanent Residents residing outside the province of the faculty. *Foreign* refers to applicants who are not Canadian Citizens or Permanent Residents, including student visa holders, refugees, and refugee claimants.

**Note:** A dash (—) indicates no applicants were reported for that group. A value of 0 means applicants were reported, but none received an offer.



THE ASSOCIATION OF FACULTIES  
OF MEDICINE OF CANADA

---

L'ASSOCIATION DES FACULTÉS  
DE MÉDECINE DU CANADA