

ADMISSION REQUIREMENTS OF CANADIAN FACULTIES OF MEDICINE

For Admission in 2027





Suggested Citation (APA):

Association of Faculties of Medicine of Canada. (2026). *Admission Requirements of Canadian Faculties of Medicine for Admission in 2026*. Ottawa, ON: AFMC.

ISSN 2816-5713

Inquiries to:

Data and Information Services

The Association of Faculties of Medicine of Canada

10th Fl-150 Elgin Street Ottawa, Ontario, Canada K2P 1L4

Telephone: 613-730-0687

E-mail: data@afmc.ca

Table of Contents

ABOUT THE AFMC.....	1
INTRODUCTION	1
General Application Procedure Overview	1
Ontario Medical School Application Service (OMSAS)	4
Medical College Admission Test® (MCAT)	5
AFMC Fee Assistance Programs	6
MCAT® Fee Assistance Program for Canadians.....	6
Application Fee Waiver Programs	7
Multiple Mini Interviews (MMI)	7
History	7
MMI procedure.....	8
CASPer (Computer-Based Assessment for Sampling Personal Characteristics).....	8
Medical Schools	8
CASPer Procedure.....	9
Repeat Applicants.....	9
Applying to Study Medicine Outside Canada	9
International Students.....	10
Faculty of Medicine, MEMORIAL UNIVERSITY OF NEWFOUNDLAND	12
Faculty of Medicine, DALHOUSIE UNIVERSITY	16
Faculté de médecine, UNIVERSITÉ LAVAL	20
Faculté de médecine et des sciences de la santé, UNIVERSITÉ DE SHERBROOKE.....	25
Faculté de médecine, UNIVERSITÉ DE MONTRÉAL—Année préparatoire	29
Faculté de médecine, UNIVERSITÉ DE MONTRÉAL—Doctorat de 1er cycle en médecine (Programme MD)	33
Faculty of Medicine and Health Sciences, MCGILL UNIVERSITY—Med-P Program	37
Faculty of Medicine and Health Sciences, MCGILL UNIVERSITY—MD-CM Program.....	41
Faculty of Medicine, UNIVERSITY OF OTTAWA	45
Faculté de médecine, UNIVERSITÉ D’OTTAWA	49
School of Medicine, QUEEN’S UNIVERSITY.....	54
Temerty Faculty of Medicine, UNIVERSITY OF TORONTO.....	58
Michael G. DeGroot School of Medicine, MCMASTER UNIVERSITY	63
Schulich School of Medicine & Dentistry, WESTERN UNIVERSITY.....	67
NORTHERN ONTARIO SCHOOL OF MEDICINE UNIVERSITY	71
School of Medicine, TORONTO METROPOLITAN UNIVERSITY	75

Table of Contents

Max Rady College of Medicine, Rady Faculty of Health Sciences, UNIVERSITY OF MANITOBA.....	79
College of Medicine, UNIVERSITY OF SASKATCHEWAN	84
Faculty of Medicine & Dentistry, UNIVERSITY OF ALBERTA	88
Cumming School of Medicine, UNIVERSITY OF CALGARY	92
Faculty of Medicine, UNIVERSITY OF BRITISH COLUMBIA.....	96
School of Medicine, SIMON FRASER UNIVERSITY.....	101

ABOUT THE AFMC

Founded in 1943, the Association of Faculties of Medicine of Canada (AFMC) represents Canada's 19 faculties of medicine and is the voice of academic medicine in this country. Our member faculties graduate over 2,923 MDs per year; teach over 12,300 undergraduate medical students; train almost 18,400 postgraduate trainees; employ nearly 73,000 full and part-time faculty members; and undertake over 3.7 billion dollars of biomedical and health care research annually.

The AFMC has worked in conjunction with the medical faculties across Canada to produce this book and has made every effort to ensure the information presented is accurate. However, this information is provided without any warranty or guarantee regarding its accuracy. Always consult the specific medical faculty's website for the most recent and official information.

INTRODUCTION

All statistical data come from an annual survey conducted by the AFMC. Individual faculty information is provided by each faculty of medicine as of February 2026 and, therefore, is subject to change. Items such as tuition and seat counts are commonly approved by a host school's governing body over the summer. It is unlikely, but possible, that a faculty may change the testing requirements for applications.

General Application Procedure Overview

There are nineteen faculties of medicine in Canada offering programs of study leading to the award of the MD degree, which is the first professional degree in medicine. The faculties of medicine are listed in a geographic sequence from east to west, with no rank ordering whatsoever.

The number of places available is determined by provincial governments based on educational and financial resources, as well as Canada's future physician workforce requirements. Since the universities are under provincial jurisdiction, the majority of seats in a faculty of medicine are allocated to permanent residents of the province in which the university is located.

An applicant must decide to which faculty or faculties of medicine applications will be made. Obviously, the geographic location of a faculty of medicine is of critical importance to a prospective applicant. For those applicants who are free to move to any location where a place may be offered, chances of success in gaining admission may be considerably enhanced. Those who apply to only one faculty of medicine have the smallest chance of being offered admission. As the number of applications increases, so does the chance of being offered a place at a faculty of medicine.

The competition to enter a faculty of medicine is very keen, so it is important that applicants ensure that they fully meet the entry requirements of each faculty of medicine to which they apply. The applicant's type of pre-medical undergraduate degree and institution of study should not deter filing an application, provided that all academic prerequisites are met. Not only should applicants plan to meet all academic prerequisites, but they must also respect all deadline dates. In general, it is not possible to apply after the deadline dates.

Those who wish to maximize their chances of gaining admission to a Canadian faculty of medicine should consider the following:

- Since residence is considered in admissions, include the faculty of medicine located in your

home province amongst those to which you apply.

- If you are resident in a province with more than one faculty of medicine (Québec, Ontario, or Alberta), try to apply to more than one faculty of medicine in the province. Remember that some faculties of medicine have more places to allocate than others.

Some applicants are set on attending a particular faculty of medicine and make only one application. In a situation of keen competition, the determination to enter a particular faculty of medicine may be tantamount to excluding oneself from the study of medicine altogether.

The general steps of the application process (summarized in the chart below) are as follows:

Step 1, is to meet the specific **entry criteria** defined for the schools to which an application is being made. If the application is accepted, the candidate proceeds to the second step.

Generally speaking, entry criteria for Canadian medical schools fall into four main categories:

- **Eligibility requirements:** Most provinces require at least two years of postsecondary education, while Quebec residents applying to a medical school in that province must complete their CÉGEP training. Most schools also request that applicants complete specific basic science courses before entering their program to prepare them for the study of medicine. Since these prerequisites vary among schools, please consult each school's section in this guide for details.
- **Academic performance:** Medical schools look closely at academic performance when evaluating candidates for potential entry into their programs. Selection committees consider grade point average (GPA) to determine whether applicants have the right study habits and intellectual capacity to pursue medical studies. Some also use Medical College Admission Test (MCAT) results. Once again, please consult each school's section in this guide for details.
- **Autobiographical sketch/essay:** Applicants have the opportunity to differentiate themselves from other candidates by providing the selection committee with an autobiographical sketch/essay that reflects their personality and accomplishments. It should include a list of such things as volunteer and paid work, research, extra courses, hobbies, sports, awards, scholarships, and other forms of recognition.
- **Reference letters:** Most Canadian medical schools ask for reference letters, which can come from community members, faculty members, or previous employers. These letters give selection committees an additional perspective on the type of medical student an applicant might become.

Step 2, requires the applicant to complete one or more **interviews**. There are several interview models used in Canadian medical schools: the panel interview, the Multiple Mini Interview (MMI) and the CASPer Interview.

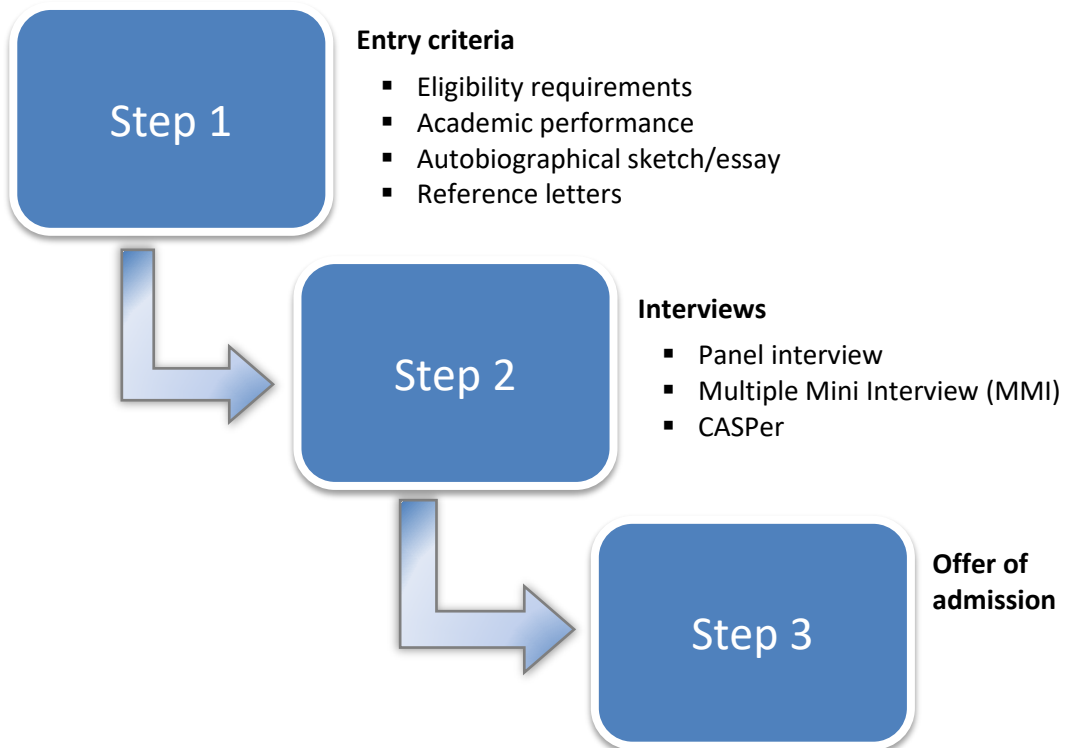
The panel interview is a traditional format in which the applicant is interviewed in front of a panel of individuals: usually a mix of community members, faculty representatives, medical students, and practising physicians. There are generally three or four evaluators present.

For more details on the MMI and CASPer formats, refer to their respective sections in this guide.

If the school decides that the applicant has the academic and non-academic capabilities to pursue a career in medicine, it proceeds to step 3.

Step 3, is for the school to send the applicant an **offer of admission** to its undergraduate medical education program.

General Application Procedure Overview



Ontario Medical School Application Service (OMSAS)

The application process for Ontario's seven medical schools is centralized through the OMSAS (Ontario Medical School Application Service), and admission must be made through the [OMSAS website](#). Each medical school is completely independent in reaching its own admission decisions.

All applicants are required to pay a service fee plus an institutional fee for each medical school applied to. These fees are non-refundable, and your application will not be forwarded to your universities of choice until you submit full payment to the Ontario Universities' Application Centre (OUAC).

Fees (in CAD)

OMSAS Application Service Fee: \$220

All applicants are required to pay a base fee of \$220.

University Fee

Each medical school charges a university fee.

OMSAS collects the university fees and remits them to the universities to cover a portion of the costs associated with the admissions assessment. This fee is payable to the OUAC.

University	Institutional Fee (in CAD)
McMaster	\$135
NOSM	\$135
Ottawa	\$135
Queen's	\$135
Toronto	\$135
TMU	\$130
Western	\$135

OMSAS Important Dates¹

Please note that the OMSAS deadlines listed below are strictly enforced.

July 2026	Application opens
September 15, 2026, at 4:30 pm (ET)	Recommended date to request references from your referees to allow sufficient time for submission before the deadline. Check Document Tracking in your application frequently to ensure that all documents are received by their respective deadlines.
October 1, 2026, at 4:30 pm (ET)	Deadline to submit applications. There are no exceptions (this is a strict deadline). <ul style="list-style-type: none"> ▪ Deadline for OMSAS to receive transcripts and academic documents. ▪ Deadline for OMSAS to receive references. ▪ Deadline for OMSAS to receive all payments.
October 21, 2026	OMSAS must receive your MCAT scores. Note: It takes 2-3 business days for OMSAS to receive your scores after they are released.
May 12, 2027	First round offers of admission are sent out.
June 30, 2027	OMSAS must receive your final transcripts.

For more information:

OMSAS
 Ontario Universities' Application Centre
 170 Research Lane
 Guelph ON N1G 5E2
 Tel.: 519-823-1940
 Fax: 519-822-1682
 E-mail: omsas@ouac.on.ca
 Website: www.ouac.on.ca/omsas

Medical College Admission Test® (MCAT)

The MCAT is a computer-based standardized examination for prospective medical students in the United States, Australia and Canada. It is designed to assess problem solving, critical thinking, and knowledge of natural, behavioural, and social science concepts and principles prerequisite to the study of medicine. The test is not required by all faculties of medicine, and the extent to which test results are used in admission decisions varies by faculty of medicine. Please see individual school sections for details.

The latest version of the MCAT took effect in April 2015. The exam was updated to reflect changes in medicine and science and to test examinees on not only what they know but how well they use what they know. Please visit [Prepare for the MCAT Exam](#) for more information.

¹ The OMSAS application dates in this guide are based on the previous year's timeline, as updated dates for 2027 admission are not yet available. OMSAS typically updates its website with the new application cycle dates in July. Please check the OMSAS website for final dates when available: www.ouac.on.ca/guide/omsas-dates/

The MCAT exam has four test sections:

- Biological and Biochemical Foundations of Living Systems
- Chemical and Physical Foundations of Biological Systems
- Psychological, Social, and Biological Foundations of Behaviour
- Critical Analysis and Reasoning Skills

Each of the four sections will receive a scaled score from a low of 118 to a high of 132, with a midpoint of 125. These 4 new MCAT scaled scores will be combined to create a total score that will range from 472 to 528, with a midpoint of 500. These scores are used by medical school admission committees to evaluate the MCAT component of the admissions process.

The overall length of the MCAT exam is approximately seven hours.

There are MCAT testing centers, both on and off campus, from coast to coast in the US and Canada. Additionally, there are numerous MCAT international testing locations which use a different testing schedule depending on location. Additional information can be found on the [International MCAT Testing Calendar](#) page of the AAMC website.

The MCAT [registration fee](#) is \$355 USD for standard registration, and \$145 USD for applicants approved under the [Fee Assistance Program](#).

For more information: Association of American Medical Colleges
 Medical College Admission Test
 655 K Street, NW, Suite 100,
 Washington, DC, 20001-2399
 Tel.: 202-828-0600
 E-mail: mcat@aamc.org (not able to accept attachments)
 Website: www.aamc.org/students/applying/mcat/

AFMC Fee Assistance Programs

MCAT® Fee Assistance Program for Canadians

The Association of American Medical Colleges (AAMC) and the Association of Faculties of Medicine of Canada have a fee assistance program for Canadian examinees in financial need who register for the MCAT during the 2026 testing year.

To help foster a more diverse physician workforce, the AAMC is committed to supporting Canadian students who might otherwise be unable to take the MCAT due to financial barriers. Through the Fee Assistance Program, eligible Canadian examinees can register for an MCAT exam date at a reduced cost.

Canadian fee assistance applicants who qualify will receive reduced scheduling, rescheduling, and cancellation rates for the 2026 testing year. Visit students-residents.aamc.org/fee-assistance-program/fee-assistance-program-canadian-examinees for full details.

To learn more about the 2026 eligibility criteria, application process and deadlines, please see www.afmc.ca/resources-data/education/aspirants-applicants/

Please be aware that you must be approved for the Fee Assistance Program prior to registering for the

MCAT exam to receive the reduced MCAT registration fees. AFMC is responsible for reviewing applications, determining eligibility for financial assistance, and notifying awardees. Please note that benefits are not retroactive, and you must be approved before scheduling, rescheduling, or canceling your MCAT exam. Please note, the AAMC and AFMC reserve the right to discontinue the program.

Questions regarding the application, evaluation, or qualification process? Please contact: mcat-fap-paf@afmc.ca

Application Fee Waiver Programs

The Association of Faculties of Medicine of Canada administers the annual Medical School Application Fee Waiver Program. The following faculties are participating in this program for the most recent application cycle:

- University of Ottawa
- Queen's University
- University of Toronto
- NOSM University
- Toronto Metropolitan University
- McMaster University
- Western University
- University of Saskatchewan
- University of Alberta

The application fee waiver program waives most, or all fees associated with applying to these medical faculties. Please visit the [application fee waiver website](#) for full details on eligibility requirements and how to apply.

For any additional questions please reach out to: mcat-fap-paf@afmc.ca

Multiple Mini Interviews (MMI)

The Multiple Mini Interview (MMI) is an interview format that gauges an applicant's potential to successfully interact with patients and colleagues. The MMI is designed to measure communication skills, specifically verbal and nonverbal skills that cannot be measured using standardized written exams or by reviewing coursework transcripts. The MMI typically consists of 6 to 10 short, timed interviews, each one about a specific scenario. The MMI has become one of the most widely used interview formats in medical school admissions worldwide. Each medical school has a slightly different variation on the MMI format.

History

Since its initial implementation at the Michael G. DeGroot School of Medicine at McMaster University in 2002, the MMI has been widely adopted as an admissions tool in medical education and other health professions. By 2008, medical schools in Canada, the United Kingdom, Australia, New Zealand, and the United States were using the MMI as part of their selection processes.

MMI procedure

Interview stations vary in content and are designed to reflect the objectives of the selecting institution. Examples of assessed domains include ethics, professionalism, interpersonal relationships, and the ability to manage, communicate, collaborate, and perform tasks. An MMI interview station requires considerable time and effort to develop and typically consists of several components, including scenario prompts, behavioural or thought process questions for the applicant, and a scoring sheet.

Circuit(s) of stations: MMI interview stations are kept short (typically 5–10 minutes) and are conducted simultaneously in a circuit. The number of stations generally ranges from 6 to 10, although formats may vary by institution.

Interviewers: There is usually one interviewer per interview station. In a typical MMI, each interviewer stays at the same station, as candidates rotate through. The interviewer thus scores each candidate based on the same interview scenario throughout the process.

Candidates: Each candidate rotates through the circuit of interviews. For example, if each interview station is 8 minutes, and there are 9 interview stations, it will take the 9 candidates being assessed on that circuit 72 minutes to complete the MMI. Each candidate begins at a different interview station, rotating to the next interview station when instructed.

As school MMI assessment questions and goals vary, refer to the site links for that faculty for more information on their MMI process. Some schools post sample questions for you to try.

CASPer (Computer-Based Assessment for Sampling Personal Characteristics)

CASPer is an online Situational Judgement Test (SJT) administered by Acuity Insights, designed to evaluate key personal and professional characteristics that make for successful students and graduates. CASPer provides admissions and selection committees with a reliable measure of traits like professionalism, ethics, communication, and empathy. It is a component of the application process used by certain medical schools in an effort to evaluate the personal and professional characteristics of applicants.

Each school incorporates CASPer in different ways to guide their admissions process. Most programs use CASPer alongside other metrics like GPA and MCAT scores as a pre-screening tool to decide who to invite to the interview process. Some programs use CASPer in a more holistic manner to help inform decisions for candidates who are on the cusp of admission. Others apply a minimum score threshold to screen applicants, while some may give additional consideration to candidates with particularly strong CASPer performance.

Medical Schools

The following Canadian medical schools are using CASPer in the current admissions cycle:

- Memorial University of Newfoundland
- Dalhousie University
- Université Laval
- Université de Sherbrooke
- Université de Montréal
- McGill University
- Queen's University
- McMaster University
- University of Alberta
- University of Manitoba
- University of Saskatchewan

CASPer Procedure

The test is completed online from a personal computer with a reliable internet connection, webcam, and audio capabilities; use of a tablet is generally not recommended.

CASPer is a 65-85 minute test consisting of two sections: a Video Response section and a Typed Response section, for a total of 11 scenarios. Each section includes a series of scenarios presented either as a short video or a written (word-based) prompt, followed by open-ended questions related to the material presented. Scenarios may depict interpersonal or professional situations, while others may ask applicants to reflect on personal experiences or perspectives.

In the **Video Response section**, applicants record their answers using their webcam. This section includes four scenarios, each of which asks two open-ended questions. Applicants have one minute to record a video response for each question. Responses are automatically submitted once the time limit expires.

In the **Typed Response section**, applicants type their answers. This section includes seven scenarios, each of which asks two open-ended questions. Applicants are given a total of 3.5 minutes to type responses to both questions before proceeding to the next scenario.

There is an optional 10-minute break after the video response section and another 5-minute break halfway through the typed response section.

For more information on CASPer, including access to sample questions, visit the official website at: acuityinsights.app.

Repeat Applicants

An applicant who does not receive an offer of admission must decide whether to re-apply for admission in a subsequent year. Unsuccessful applicants should try to reach an objective assessment of why they did not receive an offer and see if there are areas of their application upon which they can improve. A rejection often reflects the high level of competition for a limited number of places rather than a lack of ability or personal qualities. Well-qualified applicants should consider re-applying for admission to a faculty of medicine. In recent years, repeat applicants have fared relatively well.

Applying to Study Medicine Outside Canada

If an applicant decides to seek admission to a medical faculty outside Canada, they must bear in mind that returning to do postgraduate training or practise medicine in Canada may prove difficult. Limitations on recognition of international medical degrees apply to qualifications earned abroad by citizens as well as by non-citizens of Canada. Strong motivation, determination and adequate academic preparation are in themselves no guarantee that a Canadian citizen who attends an international medical faculty will be able to train or practise medicine in Canada in the future.

A note about American Medical School Admission Requirements:

There are 158 MD awarding medical schools in the United States of America. Applying to most schools can be done via the American Medical College Application Service (AMCAS) which is the American Association of Medical Colleges' centralized medical school application processing service, and you can search for individual schools in the [MSAR](#). Some schools have school-specific application processes. See the AAMC student website at students-residents.aamc.org for more information.

International Students

Not all faculties of medicine accept applications from international students. Conversely, some faculties of medicine have contracts with international governments or institutions to accept applications for “supernumerary” positions. The conditions of admission may require that the faculty of medicine will be compensated for the entire cost of medical education, the student will not apply for post-MD (residency) training in Canada, and/or that these graduates will return to their countries of origin to practise medicine. Information about contract positions is available from the educational institutions or governments that have negotiated such contracts.

International students planning to study medicine in Canada are personally responsible for obtaining the necessary student authorization and student visa to enter Canada for the purpose of study. All matters related to entering Canada must be taken up at the Canadian embassy, High Commission or consulate nearest to the student.

Faculties of Medicine

Faculty information is provided in the language of instruction for the program.

The statistics provided in the sections below are applicable to each individual faculty of medicine. For national data and additional data elements by faculty of medicine, please see the annual ***Canadian Medical Education Statistics*** Section F “Applicant Study” publication available at:

www.afmc.ca/resources-data/data/canadian-medical-education-statistics-cmes/

Faculty of Medicine, MEMORIAL UNIVERSITY OF NEWFOUNDLAND

Length of Program (Years):	4	<i>Notes: N/A</i>
Language of Instruction:	English	<i>Notes: N/A</i>
Testing of Language Proficiency:	No	<i>Notes: N/A</i>
New Admissions into Year One:	110	<i>Notes: N/A</i>

First-Year Tuition

- **Canadian Residents:** \$14,250
- **In-Province Residents:** \$14,250
- **Compulsory Fees:** Approximately \$4,400 in Phase 1; \$500-\$1,300 in Phases 2 & 3, annually
- **Visa Students:** N/A¹
- **Foreign Students:** N/A¹
(Above-Quota contract)

Tuition Details:

N/A

Year One Position Breakdown:

3 positions available to Indigenous students who qualify for the provincial pool. The 110 positions include: 84 residents of Newfoundland and Labrador, 20 seats at the Charlotte campus in PEI, and 6 seats for remaining provinces in Canada.

Charlottetown, PEI will have a regional campus of Memorial University, Faculty of Medicine that will have 20 seats, limited to residents of PEI meeting published residency criteria. Please see www.upei.ca/medicine for more details.

Selection Factors:

Applicants must be Canadian citizens/permanent residents at the time of application.

Academic Criteria:

A Bachelor's degree is required at the time of admission.

Special Consideration:

N/A

¹ International students are no longer accepted, effective June 1, 2021. Seats are available to Canadian citizens or permanent residents only.

Faculty of Medicine, MEMORIAL UNIVERSITY OF NEWFOUNDLAND

Mean GPA:	3.5/4.0	<i>Details:</i>	No minimum, however, applicants must be academically competitive.
MCAT Required?	Yes	<i>Details:</i>	No minimum. MCAT of at least 505 is recommended.
CASPer Required?	Yes	<i>Details:</i>	No minimum. Scores in 3rd & 4th quartile are recommended.
Deferred Admission?	Yes	<i>Details:</i>	Deferrals are granted at the Admissions Committee discretion each cycle for up to 4 accepted applicants.
Transfers?	Yes	<i>Details:</i>	Transfers are highly unusual and are considered on a case-by-cases basis pending review by the Undergraduate Medicine Office.

Combined Programs:

MD/PhD Students have to be admitted to the first-year medical program and then may be considered.

Application Details:

<i>Start Date:</i>	June 24, 2026
<i>Deadline:</i>	August 26, 2026
<i>Fee:</i>	\$255.00
<i>Form Type:</i>	Application via Memorial University
<i>Fee Waiver Programs:</i>	None

Interview Details:

<i>Types:</i>	MMI and a Competency Assessment (structured personal interview)
<i>Date:</i>	TBD
<i>Location:</i>	Online video interviews
<i># In-Province/Out-of-Province/ Out-of-Canada/Total:</i>	188/101/0/289
<i>Fees:</i>	N/A

Offer of Admission Details:

<i>Date:</i>	March - June 2027
<i>Number of Offers:</i>	95-120
<i>Deposit:</i>	\$1,000.00
<i>Distribution Type:</i>	Online application system via student's accounts

Faculty of Medicine, MEMORIAL UNIVERSITY OF NEWFOUNDLAND

To Request an Application or More Detailed Information:

Admissions Office,
Faculty of Medicine, Memorial University of
Newfoundland,
Medical Education Centre, Room 2M202,
St. John's NL, A1B 3V6

Tel: 1-855-633-9800 or 709-864-6328

Fax: 709-864-6365

E-Mail: munmed@mun.ca

Website: www.mun.ca/medicine/administrative-departments/admissions/

Apps: Memorial University's Online Application System.
Accessible on June 24, 2026.

YEAR FOR WHICH ADMISSION WAS SOUGHT

	2020/21	2021/22	2022/23	2023/24	2024/25
Applicant Statistics: Memorial					
Offered and Registered	77	78	79	76	82
Offered Deferred	2	2	4	2	3
Offer Declined	39	24	21	17	20
Not Offered	675	731	580	493	506
Total Applicants	793	835	684	588	611

SUCCESS RATE (%) BY RESIDENCE					
Newfoundland and Labrador	29.1	30.2	31.0	43.3	40.3
Other Canadian	9.8	7.2	10.1	7.9	8.9
Foreign	0.0	0.0	-	-	-
All Applicants to Memorial	14.9	13.1	16.2	17.3	18.5

Success Rate: Percentage of applicants who received at least one offer of admission whether subsequently registered, declined or deferred.

In-Province refers to Canadian Citizens and Permanent Residents residing in the same province as the faculty. *Other Canadian* refers to Canadian Citizens and Permanent Residents residing outside the province of the faculty. *Foreign* refers to applicants who are not Canadian Citizens or Permanent Residents, including student visa holders, refugees, and refugee claimants.

Note: A dash (—) indicates no applicants were reported for that group. A value of 0 means applicants were reported, but none received an offer.

Faculty of Medicine, DALHOUSIE UNIVERSITY

Length of Program (Years):	4	<i>Notes:</i> N/A
Language of Instruction:	English	<i>Notes:</i> N/A
Testing of Language Proficiency:	Yes	<i>Notes:</i> Only for externally funded supernumerary advanced placement positions
New Admissions into Year One:	169	<i>Notes:</i> N/A

First-Year Tuition

- **Canadian Residents:** \$26,783
- **In-Province Residents:** \$26,783
- **Compulsory Fees:** TBD
- **Visa Students:** TBD
- **Foreign Students:** \$88,849
(Above-Quota contract)

Tuition Details:

[2025/2026 Medicine Fee Schedule](#)

Year One Position Breakdown:

- 87 positions for Nova Scotia residents at the Halifax Campus. There are no longer General Pool Out of Province positions.
- 30 positions for Nova Scotia residents at the Cape Breton Medical Campus.
- 40 positions for New Brunswick residents at the Saint John, New Brunswick Campus.
- 6 positions for Prince Edward Island residents at the Halifax Campus.
- 6 positions for Other Canadian residents in the Indigenous Admissions Pathway and/or Black Learners Admissions Pathway at the Halifax Campus.

Selection Factors:

Eligibility for admission to Dalhousie's Undergraduate Medical Education program requires applicants to meet minimum academic requirements (GPA, MCAT, undergraduate degree completion) and minimum non-academic requirements as determined from CASPer, MMI, and Personal Statements/Supplemental.

Applicants who do not meet all minimum requirements are not usually considered for admission. Final selection for admissions is determined by application file score and Admissions Committee approval.

Priority Pathways for Black, Indigenous, and rural applicants are available.

Academic Criteria:

A completed, or in progress to be completed 90-120 Credit Hour Baccalaureate Degree, in any field, from an accredited institution is required. A minimum GPA and minimum MCAT score are required.

Special Consideration:

Priority Pathways for Black, Indigenous, and rural Applicants are available.

Faculty of Medicine, DALHOUSIE UNIVERSITY

Mean GPA:	3.8/4.0	<i>Details:</i>	Minimum requirement: 3.3/4.0
MCAT Required?	Yes	<i>Details:</i>	Minimum total MCAT score requirement is determined in relation to GPA. This sliding scale is available on our website here: medicine.dal.ca/departments/core-units/admissions/admissions/mcat-requirement.html
CASPer Required?	Yes	<i>Details:</i>	CASPer results will be used for interview selection purposes only. Applicants who do not complete CASPer or who do not meet the minimum CASPer score will not be considered.
Deferred Admission?	Yes	<i>Details:</i>	Only under exceptional circumstances: deferral requests are not routinely granted and have generally been provided only in rare and exceptional circumstances.
Transfers?	No	<i>Details:</i>	N/A

Combined Programs:

In collaboration with Dalhousie Faculty of Dentistry, one student who has completed the Dentistry program is admitted to the combined Dentistry/Masters in Oral Maxillofacial Surgery Program.

Application Details:

<i>Start Date:</i>	June 15, 2026
<i>Deadline:</i>	Section 1 - July 31, 2026; Section 2 - Sept 3, 2026
<i>Fee:</i>	\$70.00
<i>Form Type:</i>	Online application
<i>Fee Waiver Programs:</i>	None

Interview Details:

<i>Types:</i>	Virtual MMI
<i>Date:</i>	TBD
<i>Location:</i>	Virtual
<i># In-Province/Out-of-Province/ Out-of-Canada/Total:</i>	Approximately 300-400 applicants are invited for interview each year. Interview selection is determined by GPA eligibility, MCAT eligibility and CASPer. For applicants in the Other Canadian pool, interview selection is also determined by information regarding an applicant's compelling reasons for choosing Dalhousie Medicine as their preferred choice. Due to limited interview capacity, interview selection will be determined by pre-interview score calculated by 50% GPA, 25% MCAT, and 25% CASPer.
<i>Fees:</i>	0

Faculty of Medicine, DALHOUSIE UNIVERSITY

Offer of Admission Details:

<i>Date:</i>	March - April 2027 ¹
<i>Number of Offers:</i>	169
<i>Deposit:</i>	\$500.00
<i>Distribution Type:</i>	E-mail + student portal

To Request an Application or More Detailed Information:

medicine.admissions@dal.ca

Dalhousie University
Faculty of Medicine
5849 University Ave, Halifax
Nova Scotia, Canada B3H 4R2

Tel: 902-494-1874

Fax: N/A

E-Mail: medicine.admissions@dal.ca

Website: admissions.medicine.dal.ca

Apps: TBD

¹ Subject to change

YEAR FOR WHICH ADMISSION WAS SOUGHT

	2020/21	2021/22	2022/23	2023/24	2024/25
Applicant Statistics: Dalhousie					
Offered and Registered	127	131	146	144	147
Offered Deferred	0	6	2	1	1
Offer Declined	23	32	19	19	28
Not Offered	1,214	1,594	1,915	1,581	1,637
Total Applicants	1,365	1,763	2,082	1,745	1,813

SUCCESS RATE (%) BY RESIDENCE					
Maritimes Provinces	27.2	20.9	19.0	24.1	30.0
Other Canadian	2.8	3.2	2.2	2.3	8.3
Foreign	4.8	5.3	10.3	8.7	9.1
All Applicants to Dalhousie	11.0	9.6	8.1	9.9	14.7

Success Rate: Percentage of applicants who received at least one offer of admission whether subsequently registered, declined or deferred.

In-Province refers to Canadian Citizens and Permanent Residents residing in the same province as the faculty. *Other Canadian* refers to Canadian Citizens and Permanent Residents residing outside the province of the faculty. *Foreign* refers to applicants who are not Canadian Citizens or Permanent Residents, including student visa holders, refugees, and refugee claimants.

Faculté de médecine, UNIVERSITÉ LAVAL

Durée du programme (Ans) :	4 ou 5	<i>Remarques :</i> De 4 à 5 ans, selon le cheminement choisi et le milieu de formation attribué (Lévis, Québec ou Rimouski). Nombre de places limité pour le cheminement en 4 ans.
Langue d'enseignement :	Français	<i>Remarques :</i> S.O.
Épreuve de compétence en linguistique :	Oui	<i>Remarques :</i> S.O.
Nouvelles Admissions en Première Année :	316	<i>Remarques :</i> Environ 316 : ce nombre pourrait augmenter en raison d'attritions lors d'années précédentes.

Frais de scolarité de première année :

▪ Résidents canadiens :	13 632,96 \$
▪ Résidents du Québec :	5 120,21 \$
▪ Frais obligatoires :	1 058,15 \$
▪ Étudiants détenteurs d'un visa :	38 698,85 \$
▪ Étudiants étrangers : (Contrat hors quota)	38 698,85 \$

Détails des frais de scolarité :

Les frais correspondent à la moyenne annuelle, pour les 200 crédits du programme. Considérant que les coûts officiels ne sont pas diffusés pour les années à venir, les calculs sont basés sur des estimations.

Répartition des postes de première année :

- 301 places pour les Québécoises et Québécois collégiens et universitaires
 - 55 % de ces places sont attribuées aux collégiens incluant jusqu'à 4 places pour des collégiens issus d'un milieu à faible revenu - programme Envol
 - 45 % aux universitaires, incluant jusqu'à 8 places pour les universitaires possédant un doctorat de recherche ou en voir de l'obtenir et jusqu'à 8 places pour les universitaires sur le marché du travail
- 1 place pour une Canadienne ou un Canadien provenant d'une autre province ou territoire que le Québec
- 3 places pour les Canadiennes et Canadiens admissibles dans le cadre de l'Entente intergouvernementale entre le Québec et le Nouveau-Brunswick
- 1 place pour une candidate ou un candidat de l'international avec permis d'études
- Jusqu'à 12 places pour les membres des Premières Nations et Inuit au Québec (PNIQ)
 - Ces places sont réparties entre les 4 facultés de médecine du Québec
- Jusqu'à 4 places pour les membres des Forces armées canadiennes - Programme militaire d'études en médecine (PMEM)
 - Ces places sont réparties entre les 4 facultés de médecine francophones du Québec
- 2 places pour les universitaires de toute provenance visant la formation spécialisée en chirurgie buccale et maxillo-faciale (CBMF)

Faculté de médecine, UNIVERSITÉ LAVAL

- De plus, en fonction des attritions annuelles, jusqu'à 4 places (3 selon les attritions et 1 place supplémentaire) pourraient être offertes aux Québécoises et Québécois médecins diplômés à l'extérieur du Canada ou des États-Unis (DHCEU) désirant débiter à l'externat.

Facteurs de sélection :

Consultez le site Web pour tous les détails : www.fmed.ulaval.ca/etudes/doctorat-en-medecine#contingentement-et-selection

Critères d'études :

Les cours préalables de niveau collégial ou des cours équivalents suivants :

Biologie : (0B01 ou 00UK) et (0B0F ou 00XU)

Chimie : (0C01 ou 00UL) et (0C02 ou 00UM) et (0C0F ou 00XV)

Mathématiques : (0M02 ou 00UN et 0M03 ou 00UP) ou (0PU2 ou 022X et 0PU3 ou 022Y)

Physique : (0P01 ou 00UR) et (0P02 ou 00US) et (0P03 ou 00UT)

ou avoir réussi les cours suivants :

Biologie : (SN1 ou NYA) et (SNU ou NYB ou 401)

Chimie : (SN1 ou NYA) et (SN2 ou NYB) et (SNU ou DYD ou 202)

Mathématiques : (SN2 ou NYA et SN3 ou NYB) ou (SH2 ou 103-RE et SH3 ou 203-RE)

Physique : (SN1 ou NYA) et (SN2 ou NYB) et (SN3 ou NYC)

Consultez le site Web pour plus de détails : www.fmed.ulaval.ca/etudes/doctorat-en-medecine#admissibilite

Considération particulière

Des critères d'admission particuliers s'appliquent selon la catégorie de candidatures. Consultez le site Web pour tous les détails : <http://www.fmed.ulaval.ca/etudes/doctorat-en-medecine#contingentement-et-selection>

La formation au préexternat est offerte dans 3 milieux (Lévis, Québec et Rimouski). Voir le site Web pour connaître les modalités d'attribution et les particularités des milieux : www.fmed.ulaval.ca/etudes/doctorat-en-medecine#demande-d-admission

Moyenne GPA :	Cote de rendement seuil minimale établie pour chaque catégorie de candidatures.	<i>Détails :</i> Consultez le site Web : www.fmed.ulaval.ca/etudes/doctorat-en-medecine#contingentement-et-selection
MCAT requis?	Non	<i>Détails :</i> S.O.
CASPer requis?	Oui	<i>Détails :</i> acuityinsights.app/?lang=fr
Admissions reportées?	Non	<i>Détails :</i> S.O.
Transferts?	Non	<i>Détails :</i> S.O.

Programmes combinés :

Aucun à l'admission

Faculté de médecine, UNIVERSITÉ LAVAL

Détails d'applications :

<i>Date de début :</i>	15 août 2026
<i>Date limite :</i>	Le 1 novembre 2026 pour les candidatures universitaires, 15 février 2027 pour les candidatures préuniversitaires de l'international avec permis d'études et le 1er mars 2027 pour les candidatures canadiennes collégiennes. Consulter le site Web pour plus de détails : www.ulaval.ca/admission/deposez-votre-demande-dadmission/dates-limites-de-depot
<i>Frais :</i>	101,49 \$
<i>Type de formulaire :</i>	Demandes électroniques et papiers
<i>Programmes d'exonération des frais :</i>	Aucun

Détails d'entrevues :

<i>Types :</i>	CASPer (pré-sélection pour les MEM) et MEM
<i>Date :</i>	17 et 18 avril 2027 : Voir section MEM au www.fmed.ulaval.ca/etudes/doctorat-en-medecine#contingentement-et-selection
<i>Lieu :</i>	Université Laval ou Université de Montréal
<i># En-Province/Hors-de-la-Province/Hors-du-Canada/Total :</i>	Environ 1100 Québécoises et Québécois, 5 Canadiennes et Canadiens provenant d'une province ou d'un territoire autre que le Québec, 10 Canadiennes et Canadiens admissibles dans le cadre de l'Entente intergouvernementale entre le Québec et le Nouveau-Brunswick et 5 Candidates et candidats de l'international avec permis d'études.
<i>Frais :</i>	294,54 \$ (paiement unique pour les MEM de l'Université Laval et de l'Université de Montréal)

Détails des offres d'admission :

<i>Date :</i>	mi-mai 2027
<i>Nombre d'offres :</i>	Environ 650 pour combler environ 318 places.
<i>Dépôt :</i>	Étudiantes et étudiants du Québec et du Canada : 300 \$; Étudiantes et étudiants de l'international : 1000 \$.
<i>Mode de livraison des offres d'admission :</i>	Courriel

Faculté de médecine, UNIVERSITÉ LAVAL

Pour faire une demande ou obtenir de l'information :

admission.med@fmed.ulaval.ca

Tél : 418-656-2044 ou 1 866-656-5245

Télé : S.O.

Site Web : www.fmed.ulaval.ca/etudes/doctorat-en-medecine#demande-d-admission

Courriel : admission.med@fmed.ulaval.ca

Site Web : www.fmed.ulaval.ca/etudes/doctorat-en-medecine

Apps : www.ulaval.ca/admission/deposez-votre-demande-dadmission/dates-limites-de-depot

ANNÉE DE LA DEMANDE D'ADMISSION

	2020/21	2021/22	2022/23	2023/24	2024/25
Statistiques relatives aux candidats : Laval					
Offre et inscription	241	238	264	290	336
Offre d'admission reportée	0	0	0	0	0
Offre refusée	308	174	216	303	352
Aucune offre	1,742	2,670	2,809	2,604	2,349
Total des demandes	2,291	3,082	3,289	3,197	3,037

TAUX DE SUCCÈS (%) PAR LIEU DE RÉSIDENCE					
Québec	26.1	14.0	15.5	20.1	24.2
Autre province/territoire canadien	9.4	3.2	7.1	4.7	8.5
Étranger	0.0	3.1	3.4	0.7	0.9
Toutes les demandes à Laval ¹	24.0	13.4	14.6	18.5	22.7

¹ La province de Québec impose des restrictions quant au nombre de places allouées aux autres résidents au Canada et aux résidents hors Canada. La répartition est répartie entre les quatre facultés de médecine lors de chaque cycle d'admission.

Taux de réussite : Pourcentage de candidats ayant reçu au moins une offre d'admission, qu'ils aient été inscrits ultérieurement, refusés ou reportés.

« Individuels de la province » désigne les citoyens canadiens et les résidents permanents résidant dans la même province que la faculté. « Autres Canadiens » désigne les citoyens canadiens et les résidents permanents résidant à l'extérieur de la province où se trouve la faculté. « Étrangers » désigne les candidats qui ne sont ni citoyens canadiens ni résidents permanents, y compris les titulaires d'un visa étudiant, les réfugiés et les demandeurs d'asile. »

Remarque : Une valeur de 0 signifie que des candidats ont été signalés, mais qu'aucun n'a reçu d'offre.

Faculté de médecine et des sciences de la santé, UNIVERSITÉ DE SHERBROOKE

Durée du programme (Ans) :	4	<i>Remarques :</i>	S.O.
Langue d'enseignement :	Français	<i>Remarques :</i>	S.O.
Épreuve de compétence en linguistique :	Oui	<i>Remarques :</i>	S.O.
Nouvelles Admissions en Première Année :	238 ¹	<i>Remarques :</i>	Ce nombre pourrait augmenter en raison d'abandons lors d'années précédentes.

Frais de scolarité de première année :

- Résidents canadiens : 9 921,06 \$
- Résidents du Québec : 3 626,76 \$
- Frais obligatoires : À déterminer
- Étudiants détenteurs d'un visa : À déterminer
- Étudiants étrangers : 31 270,28 \$
(Contrat hors quota)

Détails des frais de scolarité :

À déterminer

Répartition des postes de première année :

208 pour des candidats du contingent régulier du Québec, 28 pour les candidats de l'Atlantique, 1 pour les citoyens canadiens hors Québec et Atlantique, 1 pour les candidats étrangers détenant un visa d'études. Il y a une entente entre les 4 Facultés du Québec pour l'admission des personnes des premières nations et inuits du Québec ainsi que pour des membres des Forces armées canadiennes.¹

Facteurs de sélection :

Visitez notre site Internet : www.usherbrooke.ca/etudes-medecine/programmes-detudes/doctorat-en-medecine/admission

Critères d'études :

Visitez notre site Internet : www.usherbrooke.ca/etudes-medecine/programmes-detudes/doctorat-en-medecine/admission

Considération particulière :

Des conditions particulières s'appliquent à certains contingents, visitez notre site Internet :

www.usherbrooke.ca/etudes-medecine/programmes-detudes/doctorat-en-medecine/admission

¹ La mise à jour n'est pas encore disponible - susceptible d'être modifiée ultérieurement

Faculté de médecine et des sciences de la santé, UNIVERSITÉ DE SHERBROOKE

Moyenne GPA :	S.O.	<i>Détails :</i>	S.O.
MCAT requis?	Non	<i>Détails :</i>	S.O.
CASPer requis?	Oui	<i>Détails :</i>	S.O.
Admissions reportées?	Non	<i>Détails :</i>	S.O.
Transferts?	Non	<i>Détails :</i>	S.O.

Programmes combinés :

MD/MSc, MD/PhD possible pendant la formation mais aucun poste n'est réservé pour ce profil à l'admission.

Détails d'applications :

<i>Date de début :</i>	1 septembre 2026
<i>Date limite :</i>	1er novembre 2026 (1er mars 2027 pour les candidats au cégep)
<i>Frais :</i>	104,00 \$
<i>Type de formulaire :</i>	Électronique
<i>Programmes d'exonération des frais :</i>	Aucun

Détails d'entrevues :

<i>Types :</i>	CASPer/MEM
<i>Date :</i>	MEM en avril 2027
<i>Lieu :</i>	Virtuel
<i># En-Province/Hors-de-la-Province/Hors-du-Canada/Total :</i>	À déterminer
<i>Frais :</i>	À déterminer

Détails des offres d'admission :

<i>Date :</i>	Mai à août 2027
<i>Nombre d'offres :</i>	À déterminer ¹
<i>Dépôt :</i>	300,00 \$
<i>Mode de livraison des offres d'admission :</i>	Courriel

¹ En augmentation à chaque année en raison de l'augmentation du nombre de places dans le programme en vertu de la Politique triennale du MSSS. Donnée non publiée.

Faculté de médecine et des sciences de la santé, UNIVERSITÉ DE SHERBROOKE

Pour faire une demande ou obtenir de l'information :

Bureau de la registraire,
Université de Sherbrooke,
2500, boulevard de l'Université,
Sherbrooke QC J1K 2R1

www.usherbrooke.ca/registraire/

Tél : 819-821-7686

Télé : S.O.

Courriel : admission-med@usherbrooke.ca

Site Web : www.usherbrooke.ca/etudes-medecine/programmes-detudes/doctorat-en-medecine/admission

Apps : À déterminer

ANNÉE DE LA DEMANDE D'ADMISSION

	2020/21	2021/22	2022/23	2023/24	2024/25
Statistiques relatives aux candidats : Sherbrooke					
Offre et inscription	199	219	235	257	271
Offre d'admission reportée	0	0	0	0	0
Offre refusée	166	0	0	242	324
Aucune offre	1,822	3,132	3,161	2,800	2,615
Total des demandes	2,448	3,351	3,396	3,299	3,210

TAUX DE SUCCÈS (%) PAR LIEU DE RÉSIDENCE					
Québec	15.0	9.1	6.6	17.1	20.9
Autre province/territoire canadien	16.0	15.6	10.9	17.2	19.9
Étranger	2.5	1.6	1.6	2.1	2.4
Toutes les demandes à Sherbrooke ¹	14.9	9.3	6.9	16.7	20.3

¹ La province de Québec impose des restrictions quant au nombre de places attribuées aux autres résidents au Canada et aux résidents hors Canada. La répartition est répartie entre les quatre facultés de médecine lors de chaque cycle d'admission.

Taux de réussite : Pourcentage de candidats ayant reçu au moins une offre d'admission, qu'elle ait été ultérieurement inscrite, refusée ou reportée.

« Individuels de la province » désigne les citoyens canadiens et les résidents permanents résidant dans la même province que la faculté. « Autres Canadiens » désigne les citoyens canadiens et les résidents permanents résidant à l'extérieur de la province où se trouve la faculté. « Étrangers » désigne les candidats qui ne sont ni citoyens canadiens ni résidents permanents, y compris les titulaires d'un visa étudiant, les réfugiés et les demandeurs d'asile. »

Faculté de médecine, UNIVERSITÉ DE MONTRÉAL—Année préparatoire

Durée du programme (Ans) :	1	<i>Remarques :</i>	1 an (préalablement au programme MD)
Langue d'enseignement :	Français	<i>Remarques :</i>	S.O.
Épreuve de compétence en linguistique :	Oui	<i>Remarques :</i>	Pour tout candidat n'ayant pas complété son Cégep en français ou un diplôme universitaire dans une institution francophone reconnue.
Nouvelles Admissions en Première Année :	255	<i>Remarques :</i>	135 places sont prévues pour l'admission en 1re année du doctorat et 255 places pour l'année préparatoire. La répartition du nombre de places peut être modifié entre l'année préparatoire et le programme MD selon les profils des candidats retenus.

Frais de scolarité de première année :

- **Résidents canadiens :** 14 365 \$ (base de 20 crédits par session)
- **Résidents du Québec :** 5 805 \$ (base de 20 crédits par session)
- **Frais obligatoires :** 349,67 \$
- **Étudiants détenteurs d'un visa :** 51 605 \$ (base de 20 crédits par session)
- **Étudiants étrangers :** 51 605 \$ (base de 20 crédits par session)
(*Contrat hors quota*)

Détails des frais de scolarité :
S.O.

Répartition des postes de première année :

403 nouvelles admissions en première année.

390 places occupées par des résidents du Québec; 3 places selon l'entente avec la province du Nouveau-Brunswick, 3 places pour des étudiants des Premières Nations/Autochtones, 2 places pour des candidats internationaux entre l'année préparatoire et le programme MD.

Sur les 390 places, 135 sont prévues pour l'admission en première année du doctorat et 255 pour l'année préparatoire.

Facteurs de sélection :

Tous les candidats font une demande d'admission à l'année préparatoire au programme MD et le Comité d'admission décide, selon le profil des candidats si ceux-ci seront admissibles à l'année préparatoire ou au programme MD directement. Dans la mesure des places disponibles, le candidat peut choisir de compléter ses études au Campus de Montréal, au campus en Mauricie ou au campus des Laurentides.

Critères d'études :

- Être titulaire d'un DEC en sciences, lettres et arts ou en sciences de la nature et avoir atteint les objectifs 00XU (biologie) et 00XV (chimie).

Faculté de médecine, UNIVERSITÉ DE MONTRÉAL—Année préparatoire

- Être titulaire d'un de ces avoir réussi les préalables de biologie, chimie, mathématiques et physique requis.
- Être titulaire d'un diplôme de premier cycle universitaire reconnu équivalent à un baccalauréat.
- Être titulaire d'un diplôme d'études postsecondaires reconnu équivalent à un DEC par l'UdeM.

Considération particulière :

S.O.

Moyenne GPA :	S.O.	<i>Détails :</i>	S.O.
MCAT requis?	Non	<i>Détails :</i>	S.O.
CASPer requis?	Oui	<i>Détails :</i>	S.O.
Admissions reportées?	Non	<i>Détails :</i>	S.O.
Transferts?	Non	<i>Détails :</i>	S.O.

Programmes combinés :

Aucun

Détails d'applications :

<i>Date de début :</i>	1er août 2026
<i>Date limite :</i>	Candidats collégiens québécois : 1er mars 2027 Candidats universitaires : 1er novembre 2026
<i>Frais :</i>	81 \$ de base plus 22,70 \$ par programme régulier
<i>Type de formulaire :</i>	Version électronique
<i>Programmes d'exonération des frais :</i>	Aucun

Détails d'entrevues :

<i>Types :</i>	MEM
<i>Date :</i>	17 et 18 avril 2027
<i>Lieu :</i>	En présentiel, sur le site de l'Université de Montréal ou de l'Université Laval (processus commun)
<i># En-Province/Hors-de-la-Province/Hors-du-Canada/Total :</i>	Environ 1100
<i>Frais :</i>	Environ 294 \$

Détails des offres d'admission :

<i>Date :</i>	15 mai 2027
<i>Nombre d'offres :</i>	390 au contingent régulier
<i>Dépôt :</i>	300,00 \$
<i>Mode de livraison des offres d'admission :</i>	Via le Centre étudiant, notification par courriel

Pour faire une demande ou obtenir de l'information :

admission.umontreal.ca/programmes/doctorat-de-1er-cycle-en-medecine/

Tél : 514-343-7076

Télé : Aucun

Courriel : admission-md@umontreal.ca

Site Web : md.umontreal.ca/

Apps : admission.umontreal.ca/programmes/doctorat-de-1er-cycle-en-medecine/

ANNÉE DE LA DEMANDE D'ADMISSION

	2020/21	2021/22	2022/23	2023/24	2024/25
Statistiques relatives aux candidats : Montréal (Année préparatoire)					
Offre et inscription	219	225	229	235	257
Offre d'admission reportée	0	1	0	0	0
Offre refusée	210	219	222	197	188
Aucune offre	1,713	2,300	2,476	2,357	2,216
Total des demandes	2,143	2,745	2,927	2,789	2,661

TAUX DE SUCCÈS (%) PAR LIEU DE RÉSIDENCE					
Québec	22.1	17.5	16.4	16.5	17.9
Autre province/territoire canadien	4.5	2.0	1.1	2.3	2.5
Étranger	1.6	0.9	0.9	1.9	1.6
Toutes les demandes à Montréal (Année préparatoire) ¹	20.0	16.2	15.4	15.5	16.7

¹ La province de Québec impose des restrictions quant au nombre de places allouées aux autres résidents au Canada et aux résidents hors Canada. La répartition est répartie entre les quatre facultés de médecine lors de chaque cycle d'admission.

Taux de réussite : Pourcentage de candidats ayant reçu au moins une offre d'admission, qu'ils aient été inscrits ultérieurement, refusés ou reportés.

« Individuels de la province » désigne les citoyens canadiens et les résidents permanents résidant dans la même province que la faculté. « Autres Canadiens » désigne les citoyens canadiens et les résidents permanents résidant à l'extérieur de la province où se trouve la faculté. « Étrangers » désigne les candidats qui ne sont ni citoyens canadiens ni résidents permanents, y compris les titulaires d'un visa étudiant, les réfugiés et les demandeurs d'asile. »

Faculté de médecine, UNIVERSITÉ DE MONTRÉAL—Doctorat de 1er cycle en médecine (Programme MD)

Durée du programme (Ans) :	4	<i>Remarques :</i> S.O.
Langue d'enseignement :	Français	<i>Remarques :</i> S.O.
Épreuve de compétence en linguistique :	Oui	<i>Remarques :</i> Pour tout candidat n'ayant pas complété son Cégep en français ou un diplôme universitaire dans une institution francophone reconnue.
Nouvelles Admissions en Première Année :	135	<i>Remarques :</i> 135 places sont prévues pour l'admission en 1re année du doctorat et 255 places pour l'année préparatoire. La répartition du nombre de places peut être modifié entre l'année préparatoire et le programme MD selon les profils des candidats retenus.

Frais de scolarité de première année :

- **Résidents canadiens :** 14 365 \$ (base de 20 crédits par session)
- **Résidents du Québec :** 5 805 \$ (base de 20 crédits par session)
- **Frais obligatoires :** 717 \$ par année
- **Étudiants détenteurs d'un visa :** 51 605 \$ (base de 20 crédits par session)
- **Étudiants étrangers :** 51 605 \$ (base de 20 crédits par session)
(*Contrat hors quota*)

Détails des frais de scolarité :

S.O.

Répartition des postes de première année :

403 nouvelles admissions en première année.

390 places occupées par des résidents du Québec; 3 places selon l'entente avec la province du Nouveau-Brunswick, 3 places pour des étudiants des Premières Nations/Autochtones, 2 places pour des candidats internationaux entre l'année préparatoire et le programme MD.

Sur les 390 places, 135 sont prévues pour l'admission en première année du doctorat et 255 pour l'année préparatoire.

Facteurs de sélection :

Tous les candidats font une demande d'admission à l'année préparatoire au programme MD et le Comité d'admission décide, selon le profil des candidats si ceux-ci seront admissibles à l'année préparatoire ou au programme MD directement. Dans la mesure des places disponibles, le candidat peut choisir de compléter ses études au Campus de Montréal, au campus en Mauricie ou au campus des Laurentides.

Faculté de médecine, UNIVERSITÉ DE MONTRÉAL—Doctorat de 1er cycle en médecine (Programme MD)

Critères d'études :

- Être titulaire d'un diplôme de premier cycle universitaire reconnu équivalent à un baccalauréat
- Être titulaire d'un doctorat en médecine décerné par une faculté de médecine reconnue par le Conseil médical du Canada et avoir obtenu la reconnaissance d'équivalence du diplôme de docteur en médecine par le Collège des médecins du Québec (CMQ)

Considération particulière :

S.O.

Moyenne GPA :	S.O.	<i>Détails :</i>	S.O.
MCAT requis?	Non	<i>Détails :</i>	S.O.
CASPer requis?	Oui	<i>Détails :</i>	S.O.
Admissions reportées?	Non	<i>Détails :</i>	S.O.
Transferts?	Non	<i>Détails :</i>	S.O.

Programmes combinés :

Aucun

Détails d'applications :

<i>Date de début :</i>	1 août 2026
<i>Date limite :</i>	Candidats collégiens québécois : 1er mars 2027 Candidats universitaires : 1er novembre 2026
<i>Frais :</i>	81 \$ de base plus 22,70 \$ par programme régulier
<i>Type de formulaire :</i>	Version électronique
<i>Programmes d'exonération des frais :</i>	Aucun

Détails d'entrevues :

<i>Types :</i>	MEM
<i>Date :</i>	17 et 18 avril 2027
<i>Lieu :</i>	En présentiel, sur le site de l'Université de Montréal ou de l'Université Laval (processus commun)
<i># En-Province/Hors-de-la-Province/Hors-du-Canada/Total :</i>	À déterminer
<i>Frais :</i>	Environ 294 \$

Faculté de médecine, UNIVERSITÉ DE MONTRÉAL—Doctorat de 1er cycle en médecine (Programme MD)

Détails des offres d'admission :

<i>Date :</i>	15 mai 2027
<i>Nombre d'offres :</i>	390 au contingent régulier
<i>Dépôt :</i>	300,00 \$
<i>Mode de livraison des offres d'admission :</i>	Via le Centre étudiant, notification par courriel

Pour faire une demande ou obtenir de l'information :

Université de Montréal,
CP 6205 succursale Centre-ville,
Montréal QC H3C 3T5

www.umontreal.ca/

Tél : 514-343-7076

Télé : Aucun

Courriel : admission-md@umontreal.ca

Site Web : www.md.umontreal.ca/

Apps : admission.umontreal.ca/programmes/doctorat-de-1er-cycle-en-medecine/

ANNÉE DE LA DEMANDE D'ADMISSION

	2020/21	2021/22	2022/23	2023/24	2024/25
Statistiques relatives aux candidats : Montréal (Programme MD)					
Offre et inscription	92	99	113	123	151
Offre d'admission reportée	0	0	0	0	0
Offre refusée	23	28	23	40	48
Aucune offre	577	610	792	712	654
Total des demandes	692	737	928	875	853

TAUX DE SUCCÈS (%) PAR LIEU DE RÉSIDENCE					
Québec	17.5	17.8	14.8	19.0	23.9
Autre province/territoire canadien	0.0	7.7	4.8	8.7	4.3
Étranger	0.0	7.7	20.0	11.8	18.2
Toutes les demandes à Montréal (Programme MD) ¹	16.6	17.2	14.7	18.6	23.3

¹ La province de Québec impose des restrictions quant au nombre de places attribuées aux autres résidents au Canada et aux résidents hors Canada. La répartition est répartie entre les quatre facultés de médecine lors de chaque cycle d'admission.

Taux de réussite : Pourcentage de candidats ayant reçu au moins une offre d'admission, qu'elle ait été ultérieurement inscrite, refusée ou reportée.

« Individuels de la province » désigne les citoyens canadiens et les résidents permanents résidant dans la même province que la faculté. « Autres Canadiens » désigne les citoyens canadiens et les résidents permanents résidant à l'extérieur de la province où se trouve la faculté. « Étrangers » désigne les candidats qui ne sont ni citoyens canadiens ni résidents permanents, y compris les titulaires d'un visa étudiant, les réfugiés et les demandeurs d'asile. »

Remarque : Une valeur de 0 signifie que des candidats ont été signalés, mais qu'aucun n'a reçu d'offre.

Faculty of Medicine and Health Sciences, MCGILL UNIVERSITY—Med-P Program

Length of Program (Years):	1	<i>Notes:</i> 1 preparatory year (Med-P) followed by 4 years MD-CM.
Language of Instruction:	English and French	<i>Notes:</i> English courses on Montreal campus, French courses on Outaouais campus, clinical placements in bilingual or Francophone settings from year 1 of MDCM program.
Testing of Language Proficiency:	Yes	<i>Notes:</i> French-language proficiency is a pre-admission requirement for students starting the MD-CM Program or Med-P qualifying year. Intermediate (B2) proficiency required for Montreal Campus, Advanced (C1) required for Campus Outaouais. www.mcgill.ca/medadmissions/applying/requirements/elements/language-proficiency .
New Admissions into Year One:	93	<i>Notes:</i> New Admissions into the Medicine-Preparatory (Med-P) program

First-Year Tuition

- **Canadian Residents:** N/A¹
- **In-Province Residents:** \$3,027²
- **Compulsory Fees:** \$2,483
- **Visa Students:** N/A¹
- **Foreign Students:** N/A¹
(Above-Quota contract)

Tuition Details:

MED-P Tuition: The preparatory year program fees (\$3,027 tuition, \$2,483 other compulsory fees) are those of the Faculty of Science in which the student is registered for this year. Upon successful completion of the preparatory year, the student will be admitted to the MDCM program in the Faculty of Medicine and Health Sciences.

The fee data above applies to the Fall 2025 - Winter 2026 academic year. Updated figures are published each summer at: www.mcgill.ca/student-accounts/tuition-charges/fallwinter-term-tuition-and-fees/undergraduate-fees (Select Quebec residency and "Bachelor of Science")

Year One Position Breakdown:

Maximum of 20 seats for Outaouais campus, remainder for Montreal campus.

¹ This program is available only to Québec residents.

² Fee data applies to the Fall 2025 - Winter 2026 academic year

Faculty of Medicine and Health Sciences, MCGILL UNIVERSITY—Med-P Program

Selection Factors:

Only open to Quebec residents currently completing cégep in Quebec. Invitation to interview is based on Academics (R score) 70%, and non-academic factors (CASPer test 20%, CV 10%). Final selection is based on the interview 100%. See www.mcgill.ca/medadmissions/applying/categories/roq

Additional pathways for cégep students have specific selection procedures and are open to candidates from Black and Indigenous communities in Quebec. See www.mcgill.ca/medadmissions/applying/categories/mcgill-black-candidate-pathway and www.mcgill.ca/medadmissions/applying/categories/indigenous.

Academic Criteria:

A CÉGEP Diplôme d'études collégiales is required at time of admission. Prerequisite courses from the CÉGEP program in Health Sciences include biology, chemistry, mathematics, physics and one organic chemistry course.

Special Consideration:

May be given to applicants with extenuating circumstances upon formal request.

Mean GPA:	R-Score: 36.45 ¹	<i>Details:</i>	The average R-score of applicants advanced to the second step of selection in 2025 was 36.45. In general, the lowest competitive R-score is 33.
MCAT Required?	No	<i>Details:</i>	N/A
CASPer Required?	Yes	<i>Details:</i>	CASPer test must be taken before the application deadline. CASPer results are only valid for the indicated application cycle, and only for the specified program type. CASPer results are good for only one admissions cycle.
Deferred Admission?	No	<i>Details:</i>	N/A
Transfers?	No	<i>Details:</i>	N/A

Combined Programs:

N/A

Application Details:

<i>Start Date:</i>	September 1, 2026
<i>Deadline:</i>	March 1, 2027
<i>Fee:</i>	Application fees updated here annually: www.mcgill.ca/student-accounts/tuition-fees/non-tuition-charges/other
<i>Form Type:</i>	Electronic application process
<i>Fee Waiver Programs:</i>	None

¹ This is the mean of those invited to interview; academic data is not used post interview. 2027 data will not be available until May 1, 2027. Most recent full cycle always found here: www.mcgill.ca/medadmissions/prospective/our-statistics

Faculty of Medicine and Health Sciences, MCGILL UNIVERSITY—Med-P Program

Interview Details:

<i>Types:</i>	MMI
<i>Date:</i>	April 2027
<i>Location:</i>	Virtual Zoom interviews
<i># In-Province/Out-of-Province/ Out-of-Canada/Total:</i>	384
<i>Fees:</i>	N/A

Offer of Admission Details:

<i>Date:</i>	May 2027
<i>Number of Offers:</i>	N/A ¹
<i>Deposit:</i>	\$500.00
<i>Distribution Type:</i>	Applicants can see their decision in the online applicant portal. An email reminder to verify the portal is sent to applicants only if they have not already signed in and consulted their decision.

To Request an Application or More Detailed Information:

No information is provided or accepted by mail; applications can only be submitted online. See www.mcgill.ca/medadmissions for all information and link to application.

Tel: 514-398-3517

Fax: N/A

E-Mail: admissions.med@mcgill.ca

Website: www.mcgill.ca/medadmissions

Apps: www.mcgill.ca/medadmissions/applying/submitting

For email and telephone questions, contact the Undergraduate Medical Admissions office.

Virtual and in-person appointments are also available:

www.mcgill.ca/medadmissions/contact-us

¹ Not reported by this faculty.

YEAR FOR WHICH ADMISSION WAS SOUGHT

	2020/21	2021/22	2022/23	2023/24	2024/25
Applicant Statistics: McGill (Med-P Program)					
Offered and Registered	68	78	77	92	92
Offered Deferred	0	0	0	0	0
Offer Declined	108	17	15	38	42
Not Offered	693	1,058	997	680	692
Total Applicants	869	1,153	1,089	810	826

SUCCESS RATE (%) BY RESIDENCE					
Québec	20.3	8.7	8.7	16.0	16.2
Other Canadian	-	0.0	0.0	-	-
Foreign	0.0	0.0	0.0	0.0	-
All Applicants to McGill (Med-P Program) ¹	20.3	8.7	8.6	15.9	16.2

¹ The MED-P Program is only available for CÉGEP applicants.

Success Rate: Percentage of applicants who received at least one offer of admission whether subsequently registered, declined or deferred.

In-Province refers to Canadian Citizens and Permanent Residents residing in the same province as the faculty. *Other Canadian* refers to Canadian Citizens and Permanent Residents residing outside the province of the faculty. *Foreign* refers to applicants who are not Canadian Citizens or Permanent Residents, including student visa holders, refugees, and refugee claimants.

Note: A dash (—) indicates no applicants were reported for that group. A value of 0 means applicants were reported, but none received an offer.

Faculty of Medicine and Health Sciences, MCGILL UNIVERSITY—MD-CM Program

Length of Program (Years):	4	<i>Notes:</i>	N/A
Language of Instruction:	English and French	<i>Notes:</i>	English courses on Montreal campus, French courses on Outaouais campus, clinical placements in bilingual or Francophone settings from year 1 of MDCM program.
Testing of Language Proficiency:	Yes	<i>Notes:</i>	French-language proficiency is a pre-admission requirement for students starting the MDCM Program or Med-P qualifying year. Intermediate (B2) proficiency required for Montreal Campus, Advanced (C1) required for Campus Outaouais. www.mcgill.ca/medadmissions/applying/requirements/elements/language-proficiency
New Admissions into Year One:	250	<i>Notes:</i>	N/A

First-Year Tuition

- **Canadian Residents:** \$33,282
- **In-Province Residents:** \$6,356
- **Compulsory Fees:** Quebec and Canadian: \$2,996, International: \$3,956
- **Visa Students:** \$69,339
- **Foreign Students:** \$69,339
(Above-Quota contract)

Tuition Details:

The fee data above applies to the first year of the MD-CM program for the Fall 2025 - Winter 2026 academic year. Updated figures are published each summer at: www.mcgill.ca/student-accounts/tuition-charges/fallwinter-term-tuition-and-fees/undergraduate-fees (Select "Doctor of Medicine and Master of Surgery" program, and select a Residency cohort)

Year One Position Breakdown:

- 1 position is available for visa (International) students.
- 5 positions are available for Canadian citizens/PRs residing outside Québec, but in Canada.
- 2 positions are available for students admitted to the joint MD-OMFS program.
- A minimum of 1 position for International Medical Graduates (additional positions may be available based on attrition).
- The remaining positions are available for residents of Québec and are distributed among university-level applicants and students who have successfully completed the MED-P year.
- Quebec-resident positions are assigned to the Outaouais campus (38) or the Montreal campus (remainder).
- A maximum of 12 additional positions (shared among the four Québec faculties of medicine) are available to eligible First Nations and Inuit applicants who are residents of Québec (both campuses eligible).

Faculty of Medicine and Health Sciences, MCGILL UNIVERSITY—MD-CM Program

Selection Factors:

Canadian citizens/permanent residents or visa students (will be required to hold a student authorization to enter Canada) may apply. Invitation to interview is based on Academics (70%), and non-academic factors (Casper test 20%, CV 10%). Final selection is based on the interview 100%. See www.mcgill.ca/medadmissions/applying/categories/roq.

Additional pathways for university-level students have specific selection procedures and are open to candidates from Black (Quebec residents), Indigenous (Quebec or Canadian), and Rural or small communities (located in Quebec). See www.mcgill.ca/medadmissions/applying/categories/mcgill-black-candidate-pathway, www.mcgill.ca/medadmissions/applying/categories/indigenous and www.mcgill.ca/medadmissions/applying/categories/rural-and-small-populations-pathway-rspp

Quebec residents applying to the 2-year advanced standing stream must have obtained degree equivalency from the Collège des médecins du Québec (CMQ), which requires completion of the Medical Council of Canada exams (MCCQE Part 1 and the NAC exams). IMGs applying to the 4-year program (all residency cohorts) must have completed the MCCQE Part 1 exam. IMGs with medical degrees from U.S. schools earned in 2025 or later may use the USMLE Step 2 in place of the MCCQE Part 1 and NAC exams.

Academic Criteria:

A 4-year Bachelor degree (120 credits) is required at time of admission. Prerequisite courses include a full year with laboratory work in each of general biology, general chemistry and general physics; one semester with laboratory work in organic chemistry. Courses in physiology, biochemistry, cellular and molecular biology and statistics are recommended. Up to 3 prerequisite courses may be in progress during the application year and must be completed and grades submitted by May 30 of the year of admission.

Special Consideration:

May be given to applicants with extenuating circumstances upon formal request.

Mean GPA:	3.93 ¹	<i>Details:</i>	Cumulative grade point averages (CGPA) of at least 3.5 on a 4.0 scale are considered to be within the competitive range. The average cumulative grade point average of applicants invited to interview in the Quebec resident category was 3.93.
MCAT Required?	No	<i>Details:</i>	MCAT scores not accepted.
CASPer Required?	Yes	<i>Details:</i>	CASPer test must be taken before the application deadline. CASPer results are only valid for the indicated application cycle, and only for the specified program type. CASPer results are good for only one admissions cycle.
Deferred Admission?	Yes	<i>Details:</i>	One-year deferral requests will be considered for specific situations. See www.mcgill.ca/medadmissions/after-youve-applied/deferred-admission
Transfers?	No	<i>Details:</i>	N/A

¹ This is the mean of those invited to interview; academic data is not used post interview. 2027 data will not be available until May 1, 2027. Most recent full cycle always found here: www.mcgill.ca/medadmissions/prospective/our-statistics

Faculty of Medicine and Health Sciences, MCGILL UNIVERSITY—MD-CM Program

Combined Programs:

MD-CM/PhD, MD-CM/OMFS

Application Details:

<i>Start Date:</i>	September 1, 2026
<i>Deadline:</i>	November 1, 2026
<i>Fee:</i>	Application fees updated here annually: www.mcgill.ca/student-accounts/tuition-fees/non-tuition-charges/other
<i>Form Type:</i>	Electronic application process
<i>Fee Waiver Programs:</i>	None

Interview Details:

<i>Types:</i>	MMI
<i>Date:</i>	February 2027
<i>Location:</i>	Virtual interviews on Zoom
<i># In-Province/Out-of-Province/ Out-of-Canada/Total:</i>	357/19/8/384
<i>Fees:</i>	N/A

Offer of Admission Details:

<i>Date:</i>	Spring 2027
<i>Number of Offers:</i>	N/A
<i>Deposit:</i>	\$500 for Quebec and Canadian residents, \$1,000 for international residents
<i>Distribution Type:</i>	Applicants can see their decision in the online applicant portal. An email reminder to verify the portal is sent to applicants only if they have not already signed in and consulted their decision.

To Request an Application or More Detailed Information:

No information is provided or accepted by mail; applications can only be submitted online. See www.mcgill.ca/medadmissions for all information and link to application.

Tel:	514-398-3517
Fax:	N/A
E-Mail:	Admissions.med@mcgill.ca
Website:	www.mcgill.ca/medadmissions ; www.mcgill.ca/medadmissions/applying/requirements
Apps:	www.mcgill.ca/medadmissions/applying/submitted

For email and telephone questions, contact the Undergraduate Medical Admissions office. Virtual and in-person appointments are also available:

www.mcgill.ca/medadmissions/contact-us

YEAR FOR WHICH ADMISSION WAS SOUGHT

	2020/21	2021/22	2022/23	2023/24	2024/25
Applicant Statistics: McGill (MD-CM Program)					
Offered and Registered	127	134	132	147	162
Offered Deferred	7	6	4	4	3
Offer Declined	22	20	17	25	26
Not Offered	1,920	2,374	2,251	1,462	1,420
Total Applicants	2,076	2,534	2,404	1,638	1,611

SUCCESS RATE (%) BY RESIDENCE					
Québec	12.4	10.3	9.2	12.6	14.0
Other Canadian	1.8	1.9	2.0	3.8	5.0
Foreign	3.0	2.7	3.1	7.0	3.7
All Applicants to McGill (MD-CM Program) ¹	7.5	6.2	6.4	10.7	11.9

¹ The province of Québec has restrictions on both the numbers of positions allocated for other residents in Canada and residents outside Canada. The distribution is apportioned by the four faculties of medicine during each admissions cycle.

Success Rate: Percentage of applicants who received at least one offer of admission whether subsequently registered, declined or deferred.

In-Province refers to Canadian Citizens and Permanent Residents residing in the same province as the faculty. *Other Canadian* refers to Canadian Citizens and Permanent Residents residing outside the province of the faculty. *Foreign* refers to applicants who are not Canadian Citizens or Permanent Residents, including student visa holders, refugees, and refugee claimants.

Faculty of Medicine, UNIVERSITY OF OTTAWA

Length of Program (Years):	4	<i>Notes:</i> 7 years for our students registered in our combined MD/PhD program.
Language of Instruction:	English or French	<i>Notes:</i> Once admitted to one language stream, there is no possibility of transferring to the other.
Testing of Language Proficiency:	Yes	<i>Notes:</i> Language proficiency will be assessed during the interview. If necessary, a language test may be required.
New Admissions into Year One:	183	<i>Notes:</i> Approximately 183 for the fall of 2026.

First-Year Tuition

▪ In-Province:	\$25,487.00 ¹	Tuition Details: Tuition fees for Canadian residents are different depending on if you are from Ontario or from out-of-province.
▪ Out-of-Province:	\$29,504.00 ¹	
▪ Compulsory Fees:	\$1,525 (includes ancillary and incidental fees) ¹	
▪ Visa Students:	N/A ²	
▪ Foreign Students: (Above-Quota contract)	TBD ³	

Year One Position Breakdown:

We have 170 seats allocated by the Ministry of Health. This includes: up to 7 seats for Indigenous students, up to 4 seats for students admitted through the MD/Ph.D. pathway, up to 4 seats through the MD/Masters pathway, up to 8 seats through the MD/FM pathway, 2 seats as part of our social accountability initiative, as well as seats available for our Black Students Application Program (BSAP), with no set limit. Priority will be given to regional applicants.

Selection Factors:

Canadian citizens, permanent residents (landed immigrant) status or a convention refugee in Canada may apply. As per Ministry of Health new guidelines, 95% of seats are reserved for In-Province candidates.

Academic Criteria:

3 years full-time university studies leading to a Bachelor's degree is required. Prerequisite courses include: 6 units (credits) in humanities/Social Sciences; 6 units in Biology (Anatomy and Physiology also accepted), 3 units in Organic Chemistry, 3 units in Chemistry, 3 units in Biochemistry and 3 units in Statistics. The lab requirements can be met by either having 6-units worth of courses (indicated above) that include a laboratory component and/or having completed additional course(s) up to 6 units that are exclusively laboratory-based. A minimum Grade of 3.00/4.00 (according to the OMSAS scale) must be attained in all prerequisite courses for a candidate to be considered for admission.

¹ Fees listed are for the 2025-26 academic year; subject to change.

² Not applicable; international students are not eligible for admission.

³ Applicable only to international students covered under the partnership with Kuwait; tuition fees are determined according to the agreement.

Faculty of Medicine, UNIVERSITY OF OTTAWA

Special Consideration:

N/A

Mean GPA:	2025 entry class: 3.93 (cGPA)	<i>Details:</i> The required minimum CGPA is 3.50 on the 4.0 OMSAS scale. Admission to the MD program is competitive; meeting the minimum requirements does not guarantee acceptance. CGPA calculation is based on the last three years of full-time undergraduate studies leading to a University Bachelor's Degree. This includes summer courses taken during that period.
MCAT Required?	No	<i>Details:</i> The MCAT is not an admission requirement to the medical program of the University of Ottawa.
CASPer Required?	No ¹	<i>Details:</i> N/A
Deferred Admission?	Yes	<i>Details:</i> Considered under exceptional circumstances only.
Transfers?	Yes	<i>Details:</i> Please refer to our Policy on Student Transfers, under the section <i>Admission Policies and Procedures - Student Transfer Policy</i> at the following link: www.uottawa.ca/faculty-medicine/undergraduate/admissions/application-process

Combined Programs:

MD/PhD and MD/Masters

Application Details:

<i>Start Date:</i>	July 5, 2026 ²
<i>Deadline:</i>	October 1, 2026
<i>Fee:</i>	OMSAS Fee: \$220, University Fee: \$135
<i>Form Type:</i>	Please visit the OMSAS website: www.ouac.on.ca/omsas/
<i>Fee Waiver Programs:</i>	1) Application Fee Waiver Program 2) MCAT Fee Assistance Program For information on both programs, visit: www.afmc.ca/strategic-priorities/education/aspirants-applicants/

¹ The CASPer will be replaced by a new asynchronous MMI in collaboration with other Ontario schools.

² Application period opens early July; exact date to be confirmed by OMSAS

Faculty of Medicine, UNIVERSITY OF OTTAWA

Interview Details:

<i>Types:</i>	We have a semi-structured panel interview. The panel includes a Physician, a member of the Community (who can also be a Physician) and a fourth-year medical student.
<i>Date:</i>	February - March 2027
<i>Location:</i>	For the 2026 admission year, interviews were conducted online. TBD for the 2027 admission cycle.
<i># In-Province/Out-of-Province/ Out-of-Canada/Total:</i>	On average, 600 candidates are interviewed with a mix of In-Province and Out-of-Province applicants.
<i>Fees:</i>	N/A

Offer of Admission Details:

<i>Date:</i>	Second Tuesday in May 2027
<i>Number of Offers:</i>	We anticipate approximately 183 (including English and French streams)
<i>Deposit:</i>	\$1,000.00
<i>Distribution Type:</i>	E-mail

To Request an Application or More Detailed Information:

For application, please visit the OMSAS website at the following link: www.ouac.on.ca/omsas/

For more detailed information regarding the medical school, please visit our website: www.uottawa.ca/faculty-medicine/

Tel:	613-562-5409
Fax:	N/A
E-Mail:	Admissmd@uottawa.ca
Website:	www.uottawa.ca/faculty-medicine/undergraduate/admissions
Apps:	www.ouac.on.ca/omsas/

YEAR FOR WHICH ADMISSION WAS SOUGHT

	2020/21	2021/22	2022/23	2023/24	2024/25
Applicant Statistics: Ottawa					
Offered and Registered	N.R.	N.R.	168	183	N.R.
Offered Deferred	N.R.	N.R.	0	0	N.R.
Offer Declined	N.R.	N.R.	76	83	N.R.
Not Offered	N.R.	N.R.	4,572	4,687	N.R.
Total Applicants	N.R.	N.R.	4,816	4,953	N.R.

SUCCESS RATE (%) BY RESIDENCE					
Ontario	N.R.	N.R.	5.8	5.9	N.R.
Other Canadian	N.R.	N.R.	3.1	3.8	N.R.
Foreign	N.R.	N.R.	12.5	27.3	N.R.
All Applicants to Ottawa	N.R.	N.R.	5.1	5.4	N.R.

Success Rate: Percentage of applicants who received at least one offer of admission whether subsequently registered, declined or deferred

In-Province refers to Canadian Citizens and Permanent Residents residing in the same province as the faculty. *Other Canadian* refers to Canadian Citizens and Permanent Residents residing outside the province of the faculty. *Foreign* refers to applicants who are not Canadian Citizens or Permanent Residents, including student visa holders, refugees, and refugee claimants.

N.R.: Not reported

Faculté de médecine, UNIVERSITÉ D'OTTAWA

Durée du programme (Ans) :	4	Remarques :	7 ans pour nos étudiants inscrits à notre programme combiné MD/PhD.
Langue d'enseignement :	Anglais ou Français	Remarques :	Notre programme est offert dans les deux langues officielles du Canada : anglais et français. Vous devez choisir une des deux options. Une fois admis, il n'y a aucune possibilité de changer d'un volet à l'autre.
Épreuve de compétence en linguistique :	Oui	Remarques :	La compétence linguistique sera évaluée lors de l'entrevue. Au besoin, un test de langue pourrait être requis.
Nouvelles Admissions en Première Année :	183	Remarques :	Nous prévoyons avoir approximativement 183 étudiants dans notre classe à l'automne 2026.

Frais de scolarité de première année :

- **En-Province :** 25 487,00 \$¹
- **Hors-de-la-Province :** 29 504,00 \$¹
- **Frais obligatoires :** 1 525\$ (droits accessoires et droits complémentaires)¹
- **Étudiants détenteurs d'un visa :** S.O.²
- **Étudiants étrangers :** À déterminer³
(Contrat hors quota)

Détails des frais de scolarité :

Les droits de scolarité sont établis en fonction de votre statut géographique. Le montant varie si vous êtes résidents de l'Ontario ou hors-province.

Répartition des postes de première année :

Nous avons 170 places accordées par le ministère de la Santé. Cela comprend : jusqu'à 7 places pour les étudiants autochtones, jusqu'à 4 places pour étudiants admis par la voie M.D./Ph.D., jusqu'à 4 places la voie M.D./Maîtrise, jusqu'à 8 places par la voie M.D./M.F., 2 places dans le cadre de notre initiative en matière de responsabilité sociale ainsi que des places disponibles pour notre programme de demande d'admission pour les personnes noires (PDAEN) (aucune limite). La priorité sera accordée aux candidates et aux candidats régionaux.

Facteurs de sélection :

Les personnes ayant la citoyenneté canadienne, la résidence permanente (statut d'immigrant reçu) ou le titre de réfugié au Canada au sens de la Convention peuvent présenter leur candidature. Selon les nouvelles directives du ministère de la Santé de l'Ontario, 95% des places sont réservées aux candidates et candidats provenant de l'Ontario.

Critères d'études :

Trois années d'études universitaires à temps plein d'un programme de premier cycle menant à un baccalauréat sont requises. Les cours préalables incluent : 6 crédits en sciences humaines/sciences sociales, 6 crédits en biologie ou physiologie, 3 crédits en chimie, 3 crédits en chimie organique, 3 crédits en biochimie et 3 crédits en

¹ En vigueur pour l'année scolaire 2025–2026; sujet à changement.

² Sans objet; les étudiants internationaux ne sont pas admissibles.

³ Applicable uniquement aux étudiants internationaux visés par le partenariat avec le Koweït; les droits de scolarité sont établis conformément à l'entente.

Faculté de médecine, UNIVERSITÉ D'OTTAWA

statistique. Les exigences de laboratoire sont d'avoir complété 6 crédits de cours (parmi ceux énumérés dans les exigences de cours) ayant une composante laboratoire ou en ayant complété des cours de laboratoire supplémentaires représentant jusqu'à 6 crédits. Tous les préalables doivent avoir été complétés avec une note minale de 3.00/4.00 (selon l'échelle de notation d'OMSAS) pour que la candidature soit considérée.

Considération particulière :

S.O.

Moyenne GPA :	La moyenne cumulative globale (MCG) de la cohorte admise en 2025 est de 3.93	<i>Détails :</i>	La moyenne cumulative globale (MCG) minimale requise est de 3,50 / 4,00 selon l'échelle de notation d'OMSAS. L'admission au programme M.D. est compétitive ; satisfaire aux exigences minimales ne garantit pas l'admission. Le calcul de la MCG est basé sur les trois dernières années d'études universitaires à temps plein menant à un baccalauréat. Cela inclus les cours d'été suivi durant cette période.
MCAT requis?	Non	<i>Détails :</i>	Le Medical College Admission Test (MCAT) n'est pas une condition d'admission au programme de médecine de l'Université d'Ottawa.
CASPer requis?	Non ¹	<i>Détails :</i>	S.O.
Admissions reportées?	Oui	<i>Détails :</i>	Envisagées en cas de circonstances exceptionnelles seulement.
Transferts?	Oui	<i>Détails :</i>	Consultez la politique sur le transfert d'étudiants dans la section 'Politiques et procédures d'admission - Politique sur les transferts d'étudiants et d'étudiantes' au lien suivant : www.uottawa.ca/faculte-medecine/premier-cycle/admissions/processus-demande .

Programmes combinés :

M.D./Ph.D. et M.D./Maîtrise

¹ Le CASPer sera remplacé par une nouvelle mini entrevue multiple (MEM) asynchrone, en collaboration avec d'autres école de médecine de l'Ontario.

Faculté de médecine, UNIVERSITÉ D'OTTAWA

Détails d'applications :

<i>Date de début :</i>	6 juillet 2026 ¹
<i>Date limite :</i>	1 octobre 2026
<i>Frais :</i>	Frais OMSAS : 220 \$, frais universitaires : 135 \$
<i>Type de formulaire :</i>	Consultez le site Web de OMSAS : www.ouac.on.ca/fr/omsas/
<i>Programmes d'exonération des frais :</i>	1) Programme d'exonération des frais de demande d'admission dans les facultés de médecine 2) Programme d'aide financière au MCAT Pour obtenir de plus amples renseignements sur ces deux programmes, consultez : www.afmc.ca/fr/strategic-priorities/education/aspirants-applicants/

Détails d'entrevues :

<i>Types :</i>	L'entrevue est de type semi-structurée et de style traditionnel. Le comité d'évaluation est composé d'un médecin, d'un membre de la communauté (qui peut également être médecin) et d'un étudiant en quatrième année de médecine.
<i>Date :</i>	Février - Mars 2027
<i>Lieu :</i>	Pour l'année d'admission 2026, les entrevues se déroulent en ligne. La modalité pour le cycle d'admission 2027 reste à déterminer.
<i># En-Province/Hors-de-la-Province/Hors-du-Canada/Total :</i>	Environ 600 candidats sont invités à l'entrevue. Ces candidats proviennent soit de la province de l'Ontario, soit de l'extérieur de la province.
<i>Frais :</i>	S.O.

Détails des offres d'admission :

<i>Date :</i>	Deuxième mardi du mois de mai 2027
<i>Nombre d'offres :</i>	Nous prévoyons admettre un total de 183 étudiants, ce qui inclut les deux volets d'enseignement : français et anglais.
<i>Dépôt :</i>	1 000 \$
<i>Mode de livraison des offres d'admission :</i>	Courriel

¹ La période de dépôt des candidatures débute début juillet; la date exacte reste à confirmer par l'OMSAS

Faculté de médecine, UNIVERSITÉ D'OTTAWA

Pour faire une demande ou obtenir de l'information :

Pour les demandes d'admission, veuillez-vous référer au site web d'OMSAS :

www.ouac.on.ca/fr/omsas/

Pour obtenir de l'information au sujet de notre programme de médecine, veuillez-vous référer à notre site Web : www.uottawa.ca/faculte-medecine/

Tél : 613-562-5409

Télé : S.O.

Courriel : Admissmd@uottawa.ca

Site Web : www.uottawa.ca/faculte-medecine/premier-cycle/admissions

Apps : www.ouac.on.ca/fr/omsas/

ANNÉE DE LA DEMANDE D'ADMISSION

	2020/21	2021/22	2022/23	2023/24	2024/25
Statistiques relatives aux candidats : Ottawa					
Offre et inscription	N.D.	N.D.	168	183	N.D.
Offre d'admission reportée	N.D.	N.D.	0	0	N.D.
Offre refusée	N.D.	N.D.	76	83	N.D.
Aucune offre	N.D.	N.D.	4,572	4,687	N.D.
Total des demandes	N.D.	N.D.	4,816	4,953	N.D.

SUCCESS RATE (%) BY RESIDENCE					
Ontario	N.D.	N.D.	5.8	5.9	N.D.
Autre province/territoire canadien	N.D.	N.D.	3.1	3.8	N.D.
Étranger	N.D.	N.D.	12.5	27.3	N.D.
Toutes les demandes à Ottawa	N.D.	N.D.	5.1	5.4	5.4

Taux de réussite : Pourcentage de candidats ayant reçu au moins une offre d'admission, qu'elle ait été ultérieurement inscrite, refusée ou reportée.

« Individuels de la province » désigne les citoyens canadiens et les résidents permanents résidant dans la même province que la faculté. « Autres Canadiens » désigne les citoyens canadiens et les résidents permanents résidant à l'extérieur de la province où se trouve la faculté. « Étrangers » désigne les candidats qui ne sont ni citoyens canadiens ni résidents permanents, y compris les titulaires d'un visa étudiant, les réfugiés et les demandeurs d'asile. »

N.D. = Données non disponibles

School of Medicine, QUEEN'S UNIVERSITY

Length of Program (Years):	4	<i>Notes:</i> For more information: meds.queensu.ca/academics/mdprogram
Language of Instruction:	English	<i>Notes:</i> N/A
Testing of Language Proficiency:	Yes	<i>Notes:</i> Required for applicants whose native languages do not include English will be required to obtain satisfactory standing in the Test of English as a Foreign Language (TOEFL) proficiency test as part of the application process. For more information please visit our website: meds.queensu.ca/academics/mdprogram/admissions/eligibility_application_process
New Admissions into Year One:	140	<i>Notes:</i> N/A

First-Year Tuition

- **Canadian Residents:** TBD¹
- **In-Province Residents:** TBD¹
- **Compulsory Fees:** TBD¹
- **Visa Students:** Not eligible
- **Foreign Students:** Not eligible
(Above-Quota contract)

Tuition Details:

Details regarding fees may be found on the Office of the University Registrar's website:
www.queensu.ca/registrar/financials/tuition-fees

Year One Position Breakdown:

114 seats are located at our Kingston Campus. 20 seats are located at the Queen's-Lakeridge Health site specifically for the Queen's-Lakeridge Health MD Family Medicine program. Up to an additional 6 supernumerary seats are located at our Kingston Campus for Canadian Forces Members through the Military Medical Training Program (MMTP) Pathway. A minimum of 4 seats are available to Indigenous students through ISAP.

Selection Factors:

GPA, MCAT, CASPer, Autobiographical Sketch, References, MMI and Panel.

Please see OMSAS website: www.ouac.on.ca/omsas/, as well as our website for more information:
meds.queensu.ca/academics/undergraduate/admissions.

¹ Detailed fee information is available at: www.queensu.ca/registrar/financials/tuition-fees

School of Medicine, QUEEN'S UNIVERSITY

Academic Criteria:

A minimum of 15 full or 30 half university undergraduate level courses which equate to an OMSAS course load weighting of 30. Please see OMSAS website: www.ouac.on.ca/omsas/, as well as our website for more information: meds.queensu.ca/academics/mdprogram/admissions

Special Consideration:

Applies to Indigenous applicants.

Mean GPA:	N/A	<i>Details:</i> The cumulative GPA is used in the assessment of the application. The minimum cumulative GPA to apply is 3.0. The grade point averages fluctuate annually based on the applicant pool. Past minimum grade point average levels are not a predictor of future standards. Please see the OMSAS website: www.ouac.on.ca/omsas/ , as well as our website for more information: meds.queensu.ca/academics/mdprogram/admissions
MCAT Required?	Yes	<i>Details:</i> The MCAT is required, and the test must have been taken within five years of the application deadline. Queen's School of Medicine no longer accepts the Old MCAT test scores.
CASPer Required?	Yes	<i>Details:</i> For more information: meds.queensu.ca/academics/mdprogram/admissions
Deferred Admission?	Yes	<i>Details:</i> Considered by committee after acceptance of offer.
Transfers?	No	<i>Details:</i> N/A

Combined Programs:

MD/PhD, MD/Master's, and Queen's-Lakeridge Health MD Family Medicine Program

Application Details:

<i>Start Date:</i>	July 9, 2026 ¹
<i>Deadline:</i>	October 1, 2026
<i>Fee:</i>	OMSAS Fee: \$220, University Fee: \$135
<i>Form Type:</i>	Please see OMSAS website: www.ouac.on.ca/omsas/ , as well as: meds.queensu.ca/academics/mdprogram/admissions
<i>Fee Waiver Programs:</i>	1) Application Fee Waiver Program 2) MCAT Fee Assistance Program For information on both programs, visit: www.afmc.ca/strategic-priorities/education/aspirants-applicants/

¹ Application period opens early July; exact date to be confirmed by OMSAS

School of Medicine, QUEEN'S UNIVERSITY

Interview Details:

<i>Types:</i>	MMI, Panel
<i>Date:</i>	January - March 2027
<i>Location:</i>	Virtual
<i># In-Province/Out-of-Province/ Out-of-Canada/Total:</i>	TBD
<i>Fees:</i>	N/A

Offer of Admission Details:

<i>Date:</i>	See OMSAS Important Dates: www.ouac.on.ca/guide/omsas-dates/
<i>Number of Offers:</i>	TBD
<i>Deposit:</i>	\$1,050.00
<i>Distribution Type:</i>	E-mail

To Request an Application or More Detailed Information:

Please see OMSAS website: www.ouac.on.ca/omsas/ , as well as: meds.queensu.ca/academics/undergraduate/admissions	Tel:	613-533-3307
	Fax:	N/A
	E-Mail:	queensmd@queensu.ca
	Website:	meds.queensu.ca/academics/mdprogram/admissions
	Apps:	www.ouac.on.ca/omsas/

YEAR FOR WHICH ADMISSION WAS SOUGHT

	2020/21	2021/22	2022/23	2023/24	2024/25
Applicant Statistics: Queen's					
Offered and Registered	N.R.	N.R.	N.R.	N.R.	137
Offered Deferred	N.R.	N.R.	N.R.	N.R.	6
Offer Declined	N.R.	N.R.	N.R.	N.R.	109
Not Offered	N.R.	N.R.	N.R.	N.R.	4,965
Total Applicants	N.R.	N.R.	N.R.	N.R.	5,217

SUCCESS RATE (%) BY RESIDENCE					
Ontario	N.R.	N.R.	N.R.	N.R.	5.0
Other Canadian	N.R.	N.R.	N.R.	N.R.	4.5
Foreign	N.R.	N.R.	N.R.	N.R.	0.0
All Applicants to Queen's	N.R.	N.R.	N.R.	N.R.	4.8

Success Rate: Percentage of applicants who received at least one offer of admission whether subsequently registered, declined or deferred

In-Province refers to Canadian Citizens and Permanent Residents residing in the same province as the faculty. *Other Canadian* refers to Canadian Citizens and Permanent Residents residing outside the province of the faculty. *Foreign* refers to applicants who are not Canadian Citizens or Permanent Residents, including student visa holders, refugees, and refugee claimants.

N.R.: Not reported

Temerty Faculty of Medicine, UNIVERSITY OF TORONTO

Length of Program (Years):	4	<i>Notes:</i> N/A
Language of Instruction:	English	<i>Notes:</i> N/A
Testing of Language Proficiency:	No	<i>Notes:</i> N/A
New Admissions into Year One:	305	<i>Notes:</i> 303 domestic seats (Plus 2 supernumerary)

First-Year Tuition

- **Canadian Residents:** \$27,510¹
- **In-Province Residents:** \$23,090¹
- **Compulsory Fees:** \$2,326.88 (St. George Campus), \$2,904.84 (Mississauga Campus)
- **Visa Students:** N/A²
- **Foreign Students:** \$97,350
(Above-Quota contract)

Tuition Details:

For more details, visit: www.md.utoronto.ca/current-fees

The fee schedule for the 2026-2027 academic session will be available after the Governing Council's review in Spring 2026.

Year One Position Breakdown:

St. George Campus: 244; Mississauga Campus: 59; All Supernumerary (DND only): up to 2.

Selection Factors:

The 303 domestic positions are allocated to two campuses: 244 at the St. George campus (in downtown Toronto) and 59 at the Mississauga campus (in Mississauga). Students will be assigned to either the Mississauga campus or the St. George campus at the time of offer of admission. At the St. George campus, students will be assigned to one of three academy sites shortly after they accept their offer. The St. George campus includes the FitzGerald, Peters-Boyd and Wightman-Berris Academies. All campus and academy assignments are final and will be for the entire 4 years of study. All students will be able to participate in clinical learning opportunities across the Temerty Faculty of Medicine's affiliates. During or after the interview weekends, detailed information regarding the campus and academy structure and method of assignment will be provided. Interviewed applicants will be asked to complete a short survey indicating their preference for one campus over the other, or that they have no preference. Although we cannot guarantee placement at one's first choice of campus or academy, our process is designed to maximize student satisfaction. Canadian citizens/permanent residents may apply.

Academic Criteria:

For students studying at an undergraduate program at a Canadian university, a minimum of three years full-time

¹ Tuition fees may increase after the May 2026 Governing Council Review

² No international enrolment. See OMSAS residency requirements: <http://www.ouac.on.ca/guide/omsas-ontario-resident-requirement/>

Temerty Faculty of Medicine, UNIVERSITY OF TORONTO

university study (equivalent of 15 full-course-equivalents) is required. Prerequisite courses include two full-course-equivalents in life sciences and one full-course-equivalent in social science or humanities or languages.

Special Consideration:

Our MD Program values a diverse applicant pool with students from all academic backgrounds. To acknowledge the academic challenge of undertaking graduate work, applicants pursuing graduate degrees will receive credit for their accomplishments during the file review process. Graduate applicants will receive credit for their graduate work based on the following categories: Doctoral degree conferred, Doctoral degree in progress, Research-based Master's conferred, Research-based Master's in progress, Course-based Master's conferred. Applicants enrolled in a course-based Master's that is in progress will be assessed as undergraduate applicants. Please note that you are not able to update your application after the October 1st deadline. Graduate students must have completed all program requirements, including the successful defence of their thesis (if applicable) by June 30 in the proposed year of entry (this deadline will be strictly enforced).

Indigenous Student Application Program (ISAP): Recognizing the commitment to social responsibility in the Faculty's mission, this program has been implemented to increase the number of Indigenous (First Nations, Inuit and Métis) medical students. Members of the Indigenous community (faculty, students and public members) take part in the admissions file review and admission interviews. Applicants to this program must meet the same minimum requirements for MCAT, GPA and course prerequisites as all other applicants. The program does not have a designated quota for admission. Applicants submit materials as per the core MD admissions process along with the following additional materials: 1) self-declared Indigenous status via OMSAS, 2) Proof of Indigenous ancestry (details of documentation may be found on the Admissions website), and 3) a personal essay explaining applicants' community connectedness or intended future community involvement.

Black Student Application Program (BSAP): BSAP is an optional application stream for Canadian applicants who self-identify as Black African, Black Caribbean, Black North American, and multi-racial students who have and identify with their Black ancestry. The aim of this application program is to increase and support Black medical student representation at the University of Toronto. Members of the Black community take part in admissions file review and interview processes, including: faculty, physicians, residents, medical students, and public members. This program reflects the Faculty of Medicine's strong commitment to diversity as demonstrated in its Diversity Statement. Applicants to this program must meet the same minimum requirements for MCAT, GPA and course prerequisites as all other applicants. The program does not have a designated quota for admission. Applicants submit materials as per the core MD admissions process along with the following additional materials: 1) self-identification as Black African, Black Caribbean, Black North American, or multi-racial student who has and identifies with their Black ancestry via OMSAS, and 2) a personal essay highlighting why the applicant has chosen to apply through this application stream.

Temerty Faculty of Medicine, UNIVERSITY OF TORONTO

Mean GPA:	3.94	<i>Details:</i>	Undergraduate applicants must obtain a minimum grade point average (GPA) of 3.6/4.0 on the Ontario Medical School Application Service (OMSAS) scale. Based on statistics from recent admissions cycles, a minimum GPA of 3.8 is considered competitive. Graduate applicants must obtain a minimum GPA of 3.3/4.0. Based on statistics from recent admissions cycles, a minimum GPA of 3.7 is considered competitive. The average GPA of all successful applicants in 2025/26 was 3.94.
MCAT required?	Yes	<i>Details:</i>	The MCAT is required, and the test must have been written within five years of the application deadline. Only the most recent score is considered. Applicants must meet a threshold score of 125 in each section, with an allowance of 124 in one section. Your MCAT score is not used competitively.
CASPer required?	No	<i>Details:</i>	N/A
Deferred Admission?	Yes	<i>Details:</i>	Not routinely
Transfers?	No	<i>Details:</i>	N/A

Combined Programs:

MD/PhD, MD/MBA, and MD/MSc OMFS

Application Details:

<i>Start Date:</i>	July 3, 2026 ¹
<i>Deadline:</i>	October 1, 2026
<i>Fee:</i>	OMSAS Fee: \$220, University Fee: \$135
<i>Form Type:</i>	See OMSAS section: www.ouac.on.ca/omsas
<i>Fee Waiver Programs:</i>	1) Application Fee Waiver Program 2) MCAT Fee Assistance Program For information on both programs, visit: www.afmc.ca/strategic-priorities/education/aspirants-applicants/

Interview Details:

<i>Types:</i>	vMPI
<i>Date:</i>	February and March 2027
<i>Location:</i>	Online
<i># In-Province/Out-of-Province/ Out-of-Canada/Total:</i>	750
<i>Fees:</i>	N/A

¹ Application period opens early July; exact date to be confirmed by OMSAS

Temerty Faculty of Medicine, UNIVERSITY OF TORONTO

Offer of Admission Details:

Date: May 11, 2027
Number of Offers: TBD
Deposit: \$1,000.00
Distribution Type: E-mail

To Request an Application or More Detailed Information:

See OMSAS section: www.ouac.on.ca/omsas

For More Detailed Information:

Enrolment Services, Undergraduate Medical
Education
University of Toronto
Medical Sciences Building, Room 2124,
1 King's College Circle, Toronto ON M5S 1A8

Tel: 416-978-7928

Fax: N/A

E-Mail: medicine.admiss@utoronto.ca

Website: applymd.utoronto.ca

Apps: www.ouac.on.ca/omsas/

YEAR FOR WHICH ADMISSION WAS SOUGHT

	2020/21	2021/22	2022/23	2023/24	2024/25
Applicant Statistics: Toronto					
Offered and Registered	N.R.	N.R.	N.R.	N.R.	N.R.
Offered Deferred	N.R.	N.R.	N.R.	N.R.	N.R.
Offer Declined	N.R.	N.R.	N.R.	N.R.	N.R.
Not Offered	N.R.	N.R.	N.R.	N.R.	N.R.
Total Applicants	N.R.	N.R.	N.R.	N.R.	N.R.

SUCCESS RATE (%) BY RESIDENCE					
Ontario	N.R.	N.R.	N.R.	N.R.	N.R.
Other Canadian	N.R.	N.R.	N.R.	N.R.	N.R.
Foreign	N.R.	N.R.	N.R.	N.R.	N.R.
All Applicants to Toronto	N.R.	N.R.	N.R.	N.R.	N.R.

Success Rate: Percentage of applicants who received at least one offer of admission whether subsequently registered, declined or deferred

In-Province refers to Canadian Citizens and Permanent Residents residing in the same province as the faculty. *Other Canadian* refers to Canadian Citizens and Permanent Residents residing outside the province of the faculty. *Foreign* refers to applicants who are not Canadian Citizens or Permanent Residents, including student visa holders, refugees, and refugee claimants.

N.R.: Not reported

Michael G. DeGroote School of Medicine, MCMaster UNIVERSITY

Length of Program (Years):	3	<i>Notes:</i> N/A
Language of Instruction:	English	<i>Notes:</i> N/A
Testing of Language Proficiency:	Yes	<i>Notes:</i> N/A
New Admissions into Year One:	217	<i>Notes:</i> McMaster will welcome first year students into the program on August 9, 2027

First-Year Tuition

- **Canadian Residents:** \$29,963.78
- **In-Province Residents:** \$25,130.00
- **Compulsory Fees:** \$1,154.00
- **Visa Students:** N/A¹
- **Foreign Students:** N/A¹
(Above-Quota contract)

Tuition Details:

Tuition can be made in three installments – September, January, and May.

Year One Position Breakdown:

153 positions in the Hamilton campus; 32 positions in the Waterloo Regional Campus and 32 positions in the Niagara Campus.

Selection Factors:

McMaster uses a formulaic approach to determine invitation to interview (32% UG GPA; 32% MCAT CARS; 32% CASPer and up to 4% Grad Degree). For advancement to full file review/offer of admission, the formula is: 70% MMI scores; 15% GPA; 15% MCAT CARS.

All applicants invited to the MMI (Multiple Mini Interview) will be asked to rank their site choice or indicate no preference.

Offer of admission will be made from the master rank list irrespective of geographical preference. Subsequent to filling the positions, registrants will be offered a position based on their preference and geographical background. The offer of admission will be binding to a specific site.

Canadian citizen/permanent residents or visa students may apply.

Academic Criteria:

Three years (30 semester credits) of undergraduate university education is required, in any field of study.

¹ As of 2026, admission of non-Canadian students is not permitted due to the Ontario government mandate.

Michael G. DeGroot School of Medicine, MCMaster UNIVERSITY

Special Consideration:

Indigenous applicants who wish to self-identify must submit a FIAP (Facilitated Indigenous Admissions Process) application which is reviewed by our Indigenous Health Task Force. Indigenous applicants must meet all academic criteria above but are considered within a separate applicant pool.

Black Equity Stream (BES) applicants must complete the OMSAS application and meet all minimum requirements. A supplementary application is also required, consisting of a personal essay describing their interest in applying through BES. The personal essay focuses on the applicant's experiences; it is not scored but assists in determining suitability for this stream.

Applicants to McMaster MD Program can request consideration of their GPA where an unknown, undiagnosed and/or unaccommodated disability may have resulted in grades that disadvantaged the applicant. This request can be made through the OMSAS application; additional information can be found at www.ouac.on.ca/omsas.

Mean GPA:	3.92	<i>Details:</i>	The minimum GPA considered is 3.00 on the 4.00 OMSAS scale. The mean GPA of those accepted to the Class of 2028 (starting August 2025) was 3.92.
MCAT Required?	Yes	<i>Details:</i>	The MCAT is required – McMaster uses only the CARS score and the minimum score is 123.
CASPer Required?	Yes	<i>Details:</i>	All applicants must write CASPer. The scores comprise one third of the formula used to determine invitation to interview (along with GPA and MCAT CARS - a small amount of extra weighing is given to those with a completed and conferred graduate degree).
Deferred Admission?	Yes	<i>Details:</i>	On a case-by-case basis
Transfers?	No	<i>Details:</i>	N/A

Combined Programs:

MD/PhD

Application Details:

<i>Start Date:</i>	On or about July 1st annually ¹
<i>Deadline:</i>	October 1, 2026
<i>Fee:</i>	OMSAS Fee: \$220, University Fee: \$135
<i>Form Type:</i>	Application is done through the Ontario Medical School Application Services website at www.ouac.on.ca/omsas . This opens in early July and applications must be submitted by 4:30 EST on October 1st.
<i>Fee Waiver Programs:</i>	1) Application Fee Waiver Program 2) MCAT Fee Assistance Program For information on both programs, visit: www.afmc.ca/strategic-priorities/education/aspirants-applicants/

¹ Application period opens early July; exact date to be confirmed by OMSAS

Michael G. DeGroote School of Medicine, MCMaster UNIVERSITY

Interview Details:

<i>Types:</i>	MMI
<i>Date:</i>	March/April 2027
<i>Location:</i>	Virtual
<i># In-Province/Out-of-Province/ Out-of-Canada/Total:</i>	In 2027: 570 interviewees. 540 (95% of interview spots) are for In-Province and 30 (5% of interview spots) are for Outside Ontario.
<i>Fees:</i>	N/A

Offer of Admission Details:

<i>Date:</i>	Second Tuesday in May 2027
<i>Number of Offers:</i>	217 plus waitlist (approximately 50-100 depending upon 5-year decline rate).
<i>Deposit:</i>	\$1,000.00
<i>Distribution Type:</i>	E-mail

To Request an Application or More Detailed Information:

See OMSAS section: www.ouac.on.ca/omsas

For more detailed information:
contact the MD Admissions Office at
mdadmit@mcmaster.ca

1280 Main Street West,
Michael DeGroote Centre for Learning and
Discovery (MDCL) - 3104
Hamilton, ON L8S 4K1

Tel: 905-525-9140 ext.: 22235

Fax: 905-546-0349

E-Mail: mdadmit@mcmaster.ca

Website: ugme.healthsci.mcmaster.ca

Apps: www.ouac.on.ca/omsas/

YEAR FOR WHICH ADMISSION WAS SOUGHT

	2020/21	2021/22	2022/23	2023/24	2024/25
Applicant Statistics: McMaster					
Offered and Registered	N.R.	N.R.	N.R.	N.R.	222
Offered Deferred	N.R.	N.R.	N.R.	N.R.	1
Offer Declined	N.R.	N.R.	N.R.	N.R.	112
Not Offered	N.R.	N.R.	N.R.	N.R.	4,937
Total Applicants	N.R.	N.R.	N.R.	N.R.	5,272

SUCCESS RATE (%) BY RESIDENCE					
Ontario	N.R.	N.R.	N.R.	N.R.	7.6
Other Canadian	N.R.	N.R.	N.R.	N.R.	2.8
Foreign	N.R.	N.R.	N.R.	N.R.	2.1
All Applicants to McMaster	N.R.	N.R.	N.R.	N.R.	6.4

Success Rate: Percentage of applicants who received at least one offer of admission whether subsequently registered, declined or deferred

In-Province refers to Canadian Citizens and Permanent Residents residing in the same province as the faculty. *Other Canadian* refers to Canadian Citizens and Permanent Residents residing outside the province of the faculty. *Foreign* refers to applicants who are not Canadian Citizens or Permanent Residents, including student visa holders, refugees, and refugee claimants.

N.R.: Not reported

Schulich School of Medicine & Dentistry, WESTERN UNIVERSITY

Length of Program (Years):	4	<i>Notes: N/A</i>
Language of Instruction:	English	<i>Notes: N/A</i>
Testing of Language Proficiency:	No	<i>Notes: N/A</i>
New Admissions into Year One:	187	<i>Notes: N/A</i>

First-Year Tuition

- **Canadian Residents:** \$29,482.64¹
- **In-Province Residents:** \$25,702.64¹
- **Compulsory Fees:** \$1,503.00¹
- **Visa Students:** N/A
- **Foreign Students:** TBD¹
(Above-Quota contract)

Tuition Details:

TBD

Year One Position Breakdown:

187 positions include up to 5 position available to Indigenous applicants and up to 1 position available to applicants to the oral maxillofacial surgery program. Up to 3 supernumerary seats in the Medical Military Training Program.

Selection Factors:

146 in London and 41 at the Windsor campus. Applications for both campuses will be processed by the Schulich School of Medicine & Dentistry, Western University, and will be subject to the same admission criteria.

Academic Criteria:

Our school is committed to enrolling self-directed, motivated, resilient students who reflect the diversity of the patients they serve, and who demonstrate compassion and advocacy for others. To help with this goal, we would like to learn more about our applicants through their life experiences and the activities they have participated in. Through our Western Autobiographical Sketch (ABS) applicants are asked to link their activities and life experiences to 4 domains: Teamwork and Leadership, Exposure to Diversity, Social Accountability and Social Responsibility, and Self-directed Learning, Problem Solving and Critical Inquiry. To ensure a holistic approach, this Sketch, along with GPA and MCAT, helps us determine who should be selected for interview.

Applicants must have a minimum of three years of and undergraduate degree from a recognized university.

Applicants may be in the third year of a four-year degree at the time of application. There are no prerequisite courses.

¹ Update not available yet - subject to change later

Schulich School of Medicine & Dentistry, WESTERN UNIVERSITY

Please note the admission policy is reviewed annually and the admission requirements for previous years may not apply. The University reserves the right to review and change the admission requirements at any time without notice.

We encourage ALL applicants (regardless of ethnicity, age, gender identity, socioeconomic status, faith, etc.) to apply to Schulich Medicine.

Effective July 1, 2019, Schulich Medicine has implemented an ACCESS pathway. The ACCESS pathway is for those applicants who have been adversely impacted by circumstances that created a disadvantage. These may include medical, sociocultural, and/or financial barrier(s). Those who apply through the ACCESS pathway may be considered for MCAT flexibility using the same criteria as set for our Southwestern Ontario stream (www.schulich.uwo.ca/med_dent_admissions/medicine/southwestern_ontario_applicants.html). The MCAT criteria are re-set annually based on the competitiveness of the applicant pool.

Special Consideration:

Applies to applicants who have indicated on their application they are from designated communities in Southwestern Ontario, from Indigenous communities, applicants who self identify as Black African, have applied through the Military Medical Training Program or the ACCESS pathway for those applicants who have been adversely impacted by circumstances that created a disadvantage.

Mean GPA:	3.7/4.0	<i>Details:</i>	The minimum acceptable grade point average in each of two undergraduate years is 3.70 on a 4.0 scale.
MCAT Required?	Yes	<i>Details:</i>	Applicants must have written the MCAT version introduced in April 2015 and must submit their most recent results. Schulich Medicine requires the MCAT to be written prior to the deadline of October 1st. MCAT cut offs vary from year to year and are dependent on the competitiveness of the applicant pool.
CASPer Required?	No	<i>Details:</i>	N/A
Deferred Admission?	Yes	<i>Details:</i>	Considered only on the basis of appeal to applicants who have progressed through the regular Admissions cycle and have received an offer of admission. Individuals requesting deferred admission must submit a request in writing to the Admissions Office.
Transfers?	No	<i>Details:</i>	N/A

Combined Programs:

MD/PhD (Western campus only), Oral Maxillofacial Surgery (MD/MSc)

Schulich School of Medicine & Dentistry, WESTERN UNIVERSITY

Application Details:

<i>Start Date:</i>	Subject to change ¹
<i>Deadline:</i>	October 1, 2026
<i>Fee:</i>	OMSAS Fee: \$220, University Fee: \$135
<i>Form Type:</i>	See OMSAS section: www.ouac.on.ca/omsas
<i>Fee Waiver Programs:</i>	1) Application Fee Waiver Program 2) MCAT Fee Assistance Program For information on both programs, visit: www.afmc.ca/strategic-priorities/education/aspirants-applicants/

Interview Details:

<i>Types:</i>	Panel interview
<i>Date:</i>	February/March 2027
<i>Location:</i>	Virtual
<i># In-Province/Out-of-Province/ Out-of-Canada/Total:</i>	Approximately 700
<i>Fees:</i>	N/A

Offer of Admission Details:

<i>Date:</i>	May 11, 2027
<i>Number of Offers:</i>	TBD
<i>Deposit:</i>	\$1,000.00
<i>Distribution Type:</i>	E-mail

To Request an Application or More Detailed Information:

See OMSAS section: www.ouac.on.ca/omsas	Tel: 519-661-3744
For more detailed information:	Fax: 519-850-2360
Admissions, Schulich School of Medicine & Dentistry, Western University, Health Sciences Addition H103, 1151 Richmond St., London ON, N6A 5C1	E-Mail: admissions.medicine@schulich.uwo.ca
	Website: www.schulich.uwo.ca
	Apps: www.schulich.uwo.ca/med-dent-admissions/medicine/index.html

¹ Application period opens early July; exact date to be confirmed by OMSAS

YEAR FOR WHICH ADMISSION WAS SOUGHT

	2020/21	2021/22	2022/23	2023/24	2024/25
Applicant Statistics: Western					
Offered and Registered	N.R.	N.R.	N.R.	N.R.	N.R.
Offered Deferred	N.R.	N.R.	N.R.	N.R.	N.R.
Offer Declined	N.R.	N.R.	N.R.	N.R.	N.R.
Not Offered	N.R.	N.R.	N.R.	N.R.	N.R.
Total Applicants	N.R.	N.R.	N.R.	N.R.	N.R.

SUCCESS RATE (%) BY RESIDENCE					
Ontario	N.R.	N.R.	N.R.	N.R.	N.R.
Other Canadian	N.R.	N.R.	N.R.	N.R.	N.R.
Foreign	N.R.	N.R.	N.R.	N.R.	N.R.
All Applicants to Western	N.R.	N.R.	N.R.	N.R.	N.R.

Success Rate: Percentage of applicants who received at least one offer of admission whether subsequently registered, declined or deferred

In-Province refers to Canadian Citizens and Permanent Residents residing in the same province as the faculty. *Other Canadian* refers to Canadian Citizens and Permanent Residents residing outside the province of the faculty. *Foreign* refers to applicants who are not Canadian Citizens or Permanent Residents, including student visa holders, refugees, and refugee claimants.

N.R.: Not reported

NORTHERN ONTARIO SCHOOL OF MEDICINE UNIVERSITY

Length of Program (Years):	4	<i>Notes:</i>	N/A
Language of Instruction:	English	<i>Notes:</i>	N/A
Testing of Language Proficiency:	Yes	<i>Notes:</i>	<p>Applicants to the Francophone Admission Stream are required to demonstrate their proficiency in spoken French by providing either:</p> <p>Proof of successful completion of a postsecondary degree in French with a minimum of 10 full credit courses completed in French within five years of the application deadline.</p> <p>OR</p> <p>A copy of one of the following certifications obtained within five years of the application deadline: Canadian Federal Government Level C Certification DELF Diploma – Level B2 or higher DALF Diploma – Level C1 or C2 TEF – Level B2 or higher.</p>
New Admissions into Year One:	88 with the possibility of more	<i>Notes:</i>	N/A

First-Year Tuition

- **Canadian Residents:** \$23,247.00
- **In-Province Residents:** \$23,247.00
- **Compulsory Fees:** \$976.73¹
- **Visa Students:** N/A
- **Foreign Students:** N/A
(Above-Quota contract)

Tuition Details:

Total annual fees: \$24,214.73¹

Year One Position Breakdown:

55 Sudbury Campus, 33 Thunder Bay. Includes a minimum of 6 designated positions available to Indigenous students. MMTP is paused at this time.

¹ Update not available yet - subject to change later

NORTHERN ONTARIO SCHOOL OF MEDICINE UNIVERSITY

Selection Factors:

The 88 positions are allocated to two campuses: Thunder Bay (33) and Sudbury (55). Applicants are asked to indicate their preferred campus at the time of application. There is no guarantee that all students will be offered a seat at their preferred campus. Canadian citizens/permanent residents may apply. Selection will favour those who are likely to thrive in the challenging northern and rural learning environments, including applicants from within Northern Ontario, rural and remote areas in the rest of Canada and Indigenous and Francophone applicants.

Academic Criteria:

The minimum requirement is a 4-year undergraduate university degree or equivalent in any discipline from a recognized Canadian university or equivalent. No preference is given to a particular discipline over another. While there are no course requirements, the school values applicants who present evidence of a broad undergraduate education. Applicants with majors in science will be expected to have completed at least two full-course equivalents in arts, social sciences and/or humanities within their degree programs, while applicants pursuing majors in arts, social sciences and/or humanities will be expected to have completed at least two full-course equivalents in science within their degree program.

Special Consideration:

NOSM University aims to admit a class whose profile reflects the demographics of the population of Northern Ontario. This aim includes the commitment to recruiting Indigenous and Francophone students, those who have been structurally marginalized, and those with a strong desire to live and work in Northern Ontario or rural and remote areas in the rest of Canada. All applicants to the NOSM University UME Program are considered for admission through the General Admission Stream unless they have applied to one or more of the following streams: Indigenous Admission Stream; Francophone Admission Stream; Black Admission Stream.

Mean GPA:	3.79/4.0	<i>Details:</i>	The minimum acceptable grade point average is 3.0 on a 4.0 scale. The mean grade point average of successful applicants in 2025 was 3.79.
MCAT Required?	No	<i>Details:</i>	N/A
CASPer Required?	No	<i>Details:</i>	N/A
Deferred Admission?	Yes	<i>Details:</i>	Case by case
Transfers?	No	<i>Details:</i>	Not considered due to the distributed nature of the curriculum, all NOSM students must complete all four years of the program.

Combined Programs:

N/A

NORTHERN ONTARIO SCHOOL OF MEDICINE UNIVERSITY

Application Details:

<i>Start Date:</i>	Subject to change ¹
<i>Deadline:</i>	October 1, 2026
<i>Fee:</i>	OMSAS Fee: \$220, University Fee: \$135
<i>Form Type:</i>	See OMSAS section: www.ouac.on.ca/omsas
<i>Fee Waiver Programs:</i>	1) Application Fee Waiver Program 2) MCAT Fee Assistance Program For information on both programs, visit: www.afmc.ca/strategic-priorities/education/aspirants-applicants/

Interview Details:

<i>Types:</i>	Virtual asynchronous MMI and Virtual Live Panel
<i>Date:</i>	Late February / Early March
<i>Location:</i>	Online
<i># In-Province/Out-of-Province/ Out-of-Canada/Total:</i>	Total: 340
<i>Fees:</i>	N/A

Offer of Admission Details:

<i>Date:</i>	May 2027
<i>Number of Offers:</i>	88
<i>Deposit:</i>	\$1,000.00
<i>Distribution Type:</i>	E-mail

To Request an Application or More Detailed Information:

admissions@nosm.ca

Tel: 1-800-461-8777

Fax: 807-766-7368

E-Mail: admissions@nosm.ca

Website: www.nosm.ca

Apps: www.ouac.on.ca/omsas

¹ Application period opens early July; exact date to be confirmed by OMSAS

YEAR FOR WHICH ADMISSION WAS SOUGHT

	2020/21	2021/22	2022/23	2023/24	2024/25
Applicant Statistics: NOSM University					
Offered and Registered	N.R.	N.R.	N.R.	N.R.	N.R.
Offered Deferred	N.R.	N.R.	N.R.	N.R.	N.R.
Offer Declined	N.R.	N.R.	N.R.	N.R.	N.R.
Not Offered	N.R.	N.R.	N.R.	N.R.	N.R.
Total Applicants	N.R.	N.R.	N.R.	N.R.	N.R.

SUCCESS RATE (%) BY RESIDENCE					
Ontario	N.R.	N.R.	N.R.	N.R.	N.R.
Other Canadian	N.R.	N.R.	N.R.	N.R.	N.R.
Foreign	N.R.	N.R.	N.R.	N.R.	N.R.
All Applicants to NOSM U	N.R.	N.R.	N.R.	N.R.	N.R.

Success Rate: Percentage of applicants who received at least one offer of admission whether subsequently registered, declined or deferred

In-Province refers to Canadian Citizens and Permanent Residents residing in the same province as the faculty. *Other Canadian* refers to Canadian Citizens and Permanent Residents residing outside the province of the faculty. *Foreign* refers to applicants who are not Canadian Citizens or Permanent Residents, including student visa holders, refugees, and refugee claimants.

N.R.: Not reported

School of Medicine, TORONTO METROPOLITAN UNIVERSITY

Length of Program (Years):	4	<i>Notes:</i>	N/A
Language of Instruction:	English	<i>Notes:</i>	N/A
Testing of Language Proficiency:	No	<i>Notes:</i>	N/A
New Admissions into Year One:	94	<i>Notes:</i>	N/A

First-Year Tuition

- **Canadian Residents:** \$29,135.33¹
- **In-Province Residents:** \$26,586.33¹
- **Compulsory Fees:** See *Tuition Details* below
- **Visa Students:** N/A²
- **Foreign Students:** N/A²
(Above-Quota contract)

Tuition Details:

Please refer to the TMU School of Medicine website for a breakdown of Ancillary Fees:

www.torontomu.ca/current-students/tuition-fees/medicine/

Ancillary Fees are subject to change and will be updated upon the opening of the 2027 OMSAS Application Cycle.

Year One Position Breakdown:

The Toronto Metropolitan University (TMU) School of Medicine offers 94 seats in its MD Program. Applicants must be Canadian citizens, permanent residents (landed immigrants), or convention refugees (protected persons). In accordance with new guidelines from the Ontario Ministry of Training, Colleges and Universities, a minimum of 95% of seats will be reserved for Ontario residents ([Ordinarily Residents in Ontario](#)). A strong interest in serving culturally diverse and medically underserved communities, along with a connection to the Brampton/Peel Region and surrounding areas will be considered in our selection process.

The TMU School of Medicine recognizes that many groups face barriers in both applying and being admitted to medical school. With this in mind, the TMU School of Medicine offers three admissions pathways for applicants representing equity-deserving groups. Their pathways include an Indigenous Admissions Pathway, a Black Admissions Pathway, and an Equity-Deserving Admissions Pathway. The School of Medicine is dedicated to welcoming a diverse pool of applicants; these pathways provide an important mechanism to provide access to medical education. Prospective students applying through these pathways are required to verify their eligibility by providing a self attestation and/or supporting documentation.

All applicants to the TMU School of Medicine MD Program are considered for admission through the General Admissions Stream unless they have applied through one of the three pathways.

¹ Tuition rates are subject to change per university and provincial protocols, and will be updated upon the opening of the 2027 OMSAS Application Cycle.

² International applicants not accepted.

Selection Factors:

Applicants must be Canadian citizens, permanent residents, or convention refugees (protected persons) at the time of application. TMU engages in a holistic admissions selection process that takes the whole application into consideration. Minimum thresholds are set annually. A composite aggregate score and rank of each candidate's skills and abilities will be derived and will take into account the multiple rounds of assessment, including an online Asynchronous Assessment via Kira Talent, a comprehensive File Review, and MMI or Talking Circle.

Academic Criteria:

4-year undergraduate degree (or equivalent) in any program or discipline is required from an accredited university at the time of admission.

Special Consideration:

There are special considerations available to those who require accommodations and/or have experienced exceptional circumstances. TMU's School of Medicine works closely with the Registrar's Office to ensure all known and verifiable accommodations and adjustments are made.

Mean GPA:	3.8	<i>Details:</i>	A minimum OMSAS GPA of 3.5 is required.
MCAT Required?	No	<i>Details:</i>	N/A
CASPer Required?	No	<i>Details:</i>	N/A
Deferred Admission?	Yes	<i>Details:</i>	The UGME Admissions Council, as the sole decision maker for all admissions to the MD program, may consider a request for deferral of admission by a matriculant on a case-by-case basis and where there are exceptional circumstances. Please refer to the Deferral Policy for more information.
Transfers?	No	<i>Details:</i>	The UGME Program Council and UGME Admissions Council will not accept any application for advanced standing/transfer to the TMU MD program regardless of the applicant's present or past medical school enrollment. Applicants with previous medical education who meet admission requirements may apply for a year 1 start.

Combined Programs:

No

Application Details:

<i>Start Date:</i>	July 1, 2026 ¹
<i>Deadline:</i>	October 1, 2026 ²
<i>Fee:</i>	OMSAS Fee: \$220, University Fee: \$135
<i>Form Type:</i>	Applications are accepted via the Ontario Medical School Application Service (OMSAS): www.ouac.on.ca/omsas . Updated admission requirements are posted annually in the OMSAS Application Guide and the MD Program Admissions section of the TMU School of Medicine website.
<i>Fee Waiver Programs:</i>	1) Application Fee Waiver Program 2) MCAT Fee Assistance Program For information on both programs, visit: www.afmc.ca/strategic-priorities/education/aspirants-applicants/

Interview Details:

<i>Types:</i>	Multiple Mini-Interviews (MMI); Talking Circle for applicants in the Indigenous Admissions Pathway
<i>Date:</i>	February/March 2027
<i>Location:</i>	Virtual
<i># In-Province/Out-of-Province/ Out-of-Canada/Total:</i>	Approximately 10% of applicants advance to the MMI or Talking Circle.
<i>Fees:</i>	N/A

Offer of Admission Details:

<i>Date:</i>	Second Tuesday in May 2027
<i>Number of Offers:</i>	94 first-round offers of admission. Additional offers of admission are made on a rolling basis.
<i>Deposit:</i>	\$1,000.00
<i>Distribution Type:</i>	Electronic: OMSAS portal & TMU MyServiceHub portal

¹ Application period opens early July; exact date to be confirmed by OMSAS

² The 2027 application deadline is typically October 1 by 4:30 p.m. ET but will be posted on the OMSAS website under Key Dates once available.

To Request an Application or More Detailed Information:

Website: www.torontomu.ca/school-of-medicine/programs/md/md-admissions

Email: md.admissions@torontomu.ca

Tel: N/A

Fax: N/A

E-Mail: md.admissions@torontomu.ca

Website: www.torontomu.ca/school-of-medicine

Apps: OMSAS
www.ouac.on.ca/guide/omsas-toronto-met

Admission Statistics for Toronto Metropolitan University

The Toronto Metropolitan University medical faculty has accepted their first class of students for the 2025/26 academic year. Currently the AFMC has not collected any admission statistics from the faculty. Future iterations of the admission guidebook will contain admission statistics as the data becomes available.

Max Rady College of Medicine, Rady Faculty of Health Sciences, UNIVERSITY OF MANITOBA

Length of Program (Years):	4	<i>Notes:</i>	Pre-clerkship - Med 1 and Med 2; Clerkship - Med 3 and Med 4
Language of Instruction:	English or French	<i>Notes:</i>	N/A
Testing of Language Proficiency:	Yes	<i>Notes:</i>	There is a bilingual stream in medicine which provides students with the opportunity to complete some parts of their curriculum in French. In Pre-Clerkship, students will complete a Professional Medical French course, and some small group sessions in clinical skills can be offered in French. Additionally, all applicants whose primary language is not English and do not qualify for a waiver under the University of Manitoba's English language proficiency regulations (umanitoba.ca/admissions/undergraduate/requirements/english-language-proficiency#criteria-for-english-language-proficiency-waivers) will be required to demonstrate proficiency in English through one of the options listed at: umanitoba.ca/admissions/undergraduate/requirements/english-language-proficiency#english-language-proficiency-test-options .
New Admissions into Year One:	140	<i>Notes:</i>	N/A

First-Year Tuition

- **Canadian Residents:** \$13,800
- **In-Province Residents:** \$13,800
- **Compulsory Fees:** TBD
- **Visa Students:** N/A
- **Foreign Students:** N/A
(Above-Quota contract)

Tuition Details:

\$13,800 per year

Year One Position Breakdown:

Approximately ninety-five percent (95%) will be filled by residents of Manitoba and up to five percent (5%) by those from out-of-province. These percentages include students who have declared their First Nations, Metis or Inuit heritage. All students who receive an offer are provided with the opportunity to join the Bilingual stream. A maximum of 8 spots are available regardless of which applicant pool they received their offer.

Max Rady College of Medicine, Rady Faculty of Health Sciences, UNIVERSITY OF MANITOBA

Selection Factors:

All eligible applicants to the Canadian Indigenous Applicant Pool will be offered an interview.

For all other applicant pools, the Admissions Committee will calculate a composite score to determine an applicant's ranking. The composite score will be modified by the rural, advanced academic, and socioeconomic and cultural diversity coefficient calculated for all eligible applicants.

All applicants who meet the eligibility requirements are ranked by calculating a composite score in the following way:

$(20\% \text{ AGPA} + 50\% \text{ MCAT}^{\text{®}} + 30\% \text{ CASPer}^{\text{®}}) \times (\text{rural co-efficient if } >0) \times (\text{academic co-efficient if } >0) \times (\text{socioeconomic and cultural diversity co-efficient if } >0)$

Ranking of Applicants for offer of Admission

All applicants who were selected for interview and participated in the interview process are ranked by the Admissions Committee.

1. Manitoba and Out-of-Province Applicant Pools: All applicants who participated in the interview process will be ranked in their respective pool by calculating a composite score in the following way: $(15\% \text{ AGPA} + 40\% \text{ MCAT}^{\text{®}} + 35\% \text{ MMI} + 10\% \text{ CASPer}^{\text{®}}) \times (\text{rural co-efficient if } >0) \times (\text{academic co-efficient if } >0) \times (\text{socioeconomic and cultural diversity co-efficient if } >0)$;
2. Canadian Indigenous Applicant Pool: Offers of admission will be extended to applicants who are recommended to the Admissions Committee by the Canadian Indigenous Applicant Pool panel, regardless of composite score of MMI results.

Academic Criteria:

1. Bachelor's Degree completed no later than June 30, 2027, from a university recognized by the University of Manitoba.
2. Medical College Admission Test (MCAT).
3. Adjusted Grade point Average (AGPA) of 3.30 or higher.
4. Situational Judgement Test (CASPer[®])
 - a. Applicants to the Manitoba applicant pool and the Out of Province applicant pool must achieve a threshold CASPer[®] score greater than 1.5 standard deviations below the mean for their respective applicant pool in order to maintain their eligibility
 - b. CASPer[®] shall not be used in the selection of registrants from the Canadian Indigenous applicant pool. However, as applicants from the Canadian Indigenous applicant pool may also be considered in the general applicant pools (Manitoba applicant pool and Out of Province applicant pool) the CASPer[®] must be written as it will be used in the selection in these general pools.
5. Indigenous Course content pre-requisite

Max Rady College of Medicine, Rady Faculty of Health Sciences, UNIVERSITY OF MANITOBA

Special Consideration:

N/A

Mean GPA:	3.3/4.5	<i>Details:</i>	Adjusted Grade Point Average (AGPA) of 3.30 or higher on a 4.5 scale.
MCAT Required?	Yes	<i>Details:</i>	Medical College Admission Test (MCAT) completed no earlier than April 2023 and no later than Sept 13, 2026. See the Applicant Admission Requirements for the Max Rady College of Medicine for more information.
CASPer Required?	Yes	<i>Details:</i>	Applicants to the Manitoba applicant pool and the Out of Province applicant pool must achieve a threshold CASPer® score greater than 1.5 standard deviations below the mean for their respective applicant pool in order to maintain their eligibility.
Deferred Admission?	Yes	<i>Details:</i>	Deferral requests will be reviewed only after an offer of admission has been granted, on a case-by-case basis by the Admissions Committee, limited to 1 year in length. Deferral requests will only be considered based on the following criteria: <ul style="list-style-type: none"> • The completion of graduate studies (Master's or PhD), where the degree will be completed by June 30 of the following year. OR <ul style="list-style-type: none"> • Extenuating personal circumstances, such as illness or significant hardship for self or to a first-degree relative. <ul style="list-style-type: none"> o This will include parents, siblings, children, and spouses. o It will not include second-degree and higher relatives, nor friends.
Transfers?	Yes	<i>Details:</i>	Transfer Policy: umanitoba.ca/health-sciences/rady-faculty-health-sciences-policies#max-rady-college-of-medicine

Combined Programs:

No longer provided

Application Details:

<i>Start Date:</i>	August 15, 2026
<i>Deadline:</i>	October 1, 2026
<i>Fee:</i>	\$100.00
<i>Form Type:</i>	Electronic application process
<i>Fee Waiver Programs:</i>	None

Max Rady College of Medicine, Rady Faculty of Health Sciences, UNIVERSITY OF MANITOBA

Interview Details:

<i>Types:</i>	MMI/CASPer for Manitoba, Out-of-Province, and Bilingual pools/streams; Panel for the Canadian Indigenous Applicant Pool. Those applying through the Canadian Indigenous Applicant Pool must participate in the MMI/CASPer as well as the Panel.
<i>Date:</i>	February and March 2027
<i>Location:</i>	MMI is virtual; Panel Interview is in person
<i># In-Province/Out-of-Province/Out-of-Canada/Total:</i>	Total 425 interviews
<i>Fees:</i>	0

Offer of Admission Details:

<i>Date:</i>	May 2027
<i>Number of Offers:</i>	Offers sent until all seats are filled, up to August 11 th
<i>Deposit:</i>	\$500.00
<i>Distribution Type:</i>	E-mail

To Request an Application or More Detailed Information:

Visit our website:	umanitoba.ca/explore/undergraduate-admissions/requirements/medicine	Tel:	204-789-3499
		Fax:	204-789-3911
		E-Mail:	UGME.Admissions@umanitoba.ca
		Website:	umanitoba.ca/explore/undergraduate-admissions/requirements/medicine
		Apps:	apply.umanitoba.ca/apply/

YEAR FOR WHICH ADMISSION WAS SOUGHT

	2020/21	2021/22	2022/23	2023/24	2024/25
Applicant Statistics: Manitoba					
Offered and Registered	110	108	105	125	134
Offered Deferred	1	5	0	1	1
Offer Declined	27	31	32	26	38
Not Offered	721	944	960	988	1,006
Total Applicants	859	1,088	1,097	1,140	1,179

SUCCESS RATE (%) BY RESIDENCE					
Manitoba	23.8	22.3	15.1	25.4	26.6
Other Canadian	7.6	6.1	3.8	4.8	6.7
Foreign	-	-	-	-	-
All Applicants to Manitoba	16.1	13.2	12.8	13.3	14.8

Success Rate: Percentage of applicants who received at least one offer of admission whether subsequently registered, declined or deferred

In-Province refers to Canadian Citizens and Permanent Residents residing in the same province as the faculty. *Other Canadian* refers to Canadian Citizens and Permanent Residents residing outside the province of the faculty. *Foreign* refers to applicants who are not Canadian Citizens or Permanent Residents, including student visa holders, refugees, and refugee claimants.

N.R.: Not reported

Note: A dash (—) indicates no applicants were reported for that group.

College of Medicine, UNIVERSITY OF SASKATCHEWAN

Length of Program (Years): 4	<i>Notes:</i> N/A
Language of Instruction: English	<i>Notes:</i> N/A
Testing of Language Proficiency: Yes	<i>Notes:</i> Applicants whose primary language is not English may be required to present proof of proficiency in English. Information regarding the English language proficiency requirement at the University of Saskatchewan can be found at admissions.usask.ca
New Admissions into Year One: 108	<i>Notes:</i> N/A

First-Year Tuition

- **Canadian Residents:** \$21,897¹
- **In-Province Residents:** \$21,897¹
- **Compulsory Fees:** \$1,308.24¹
- **Visa Students:** N/A²
- **Foreign Students:** N/A²
(Above-Quota contract)

Tuition Details:

For more information, visit: admissions.usask.ca/money/tuition.php.

Year One Position Breakdown:

Includes up to 20 positions available to self-identified Indigenous applicants through the Indigenous Admissions Circle (IAC), and 7 positions available for applicants to be considered through the Diversity and Social Accountability Admissions Program (DSAAP).

Selection Factors:

Applicants must be Canadian citizens or permanent residents of Canada.

Academic Criteria:

Please watch the USask College of Medicine website (medicine.usask.ca/admission-to-the-md-program/how-to-apply.php) for announcement of changes. The updated Applicant Information document will be available at www.medicine.usask.ca/admissions by July 1, 2026.

For application, all applicants will be required to have completed a 4-year degree with all degree requirements completed by April 30th of the year admission is being sought and MCAT (earliest accepted 2022) by the application deadline. Indigenous studies prerequisite required for application in 2026 for entry in 2027 by the application deadline.

¹ Update not available yet - subject to change later

² International students are not eligible for admission

College of Medicine, UNIVERSITY OF SASKATCHEWAN

Special Consideration:

Applicants that qualify for consideration through the Diversity and Social Accountability Admission Program (DSAAP) will first be ranked in the general pool and could gain admission through this pool to maximize the number of students who qualify and gain admission under the DSAAP.

Applicants wishing to be considered through the Indigenous Admissions Circle (IAC) for the up to 20 available seats, must have their Indigenous Membership/Citizenship verified through the USask Truth Policy.

Self-identified Black applicants may select to apply through the Black Student Admission Pathway (BSAP) optional pathway utilizing the same admissions requirements and standards as general application.

Mean GPA:	89% (incoming 2025)	<i>Details:</i>	The minimum acceptable university academic average (UAA) is 80% for all applicants.
MCAT Required?	Yes	<i>Details:</i>	MCAT scores must be obtained in one sitting prior to the application deadline. The earliest accepted scores for application in 2026 for entry in 2027 are from 2022. The last accepted writing in 2026 and the minimum required total score and section scores are posted in the Applicant Information document for application 2026 for entry in 2027.
CASPer Required?	Yes	<i>Details:</i>	Applicants must have completed one of the acceptable dates listed for University of Saskatchewan College of Medicine Undergraduate MD program for application in 2026 and the score must be distributed to the University of Saskatchewan College of Medicine by the application deadline.
Deferred Admission?	Yes	<i>Details:</i>	Option available for all applicants up to a maximum of 5 in total to complete a graduate or professional program.
Transfers?	No	<i>Details:</i>	N/A

Combined Programs:

MD/MBA (successful applicants to the MD program may defer admission for one year to complete an MBA degree).

Application Details:

<i>Start Date:</i>	August 1, 2026
<i>Deadline:</i>	October 1, 2026
<i>Fee:</i>	\$150.00
<i>Form Type:</i>	Online application
<i>Fee Waiver Programs:</i>	AFMC Medical School Application Fee Waiver Program

College of Medicine, UNIVERSITY OF SASKATCHEWAN

Interview Details:

<i>Types:</i>	MMI, Panel Interview, CASPer, Conversation Circle (Indigenous Admissions Pathway)
<i>Date:</i>	TBD
<i>Location:</i>	MMI (virtual), Panel Interview and Conversation Circles (TBD), CASPer
<i># In-Province/Out-of-Province/ Out-of-Canada/Total:</i>	MMI (2026 - 323 interviewed) and Panel Interview and Conversation Circle (2026 - TBD interviewed)
<i>Fees:</i>	MMI Fee: \$75.00

Offer of Admission Details:

<i>Date:</i>	May 15
<i>Number of Offers:</i>	108 in first round of offers
<i>Deposit:</i>	10% of tuition ¹
<i>Distribution Type:</i>	E-mail

To Request an Application or More Detailed Information:

med.admissions@usask.ca

Tel: 306-966-4030

Fax: 306-966-2601

E-Mail: med.admissions@usask.ca

Website: medicine.usask.ca/index.php

Apps: medicine.usask.ca/admission-to-the-md-program/how-to-apply.php

¹ Update not available yet - subject to change later

YEAR FOR WHICH ADMISSION WAS SOUGHT

	2020/21	2021/22	2022/23	2023/24	2024/25
Applicant Statistics: Saskatchewan					
Offered and Registered	94	94	92	101	106
Offered Deferred	7	7	3	2	3
Offer Declined	24	42	39	19	29
Not Offered	410	584	655	925	835
Total Applicants	537	727	789	1,047	973

SUCCESS RATE (%) BY RESIDENCE					
Saskatchewan	31.5	29.7	25.8	28.8	31.8
Other Canadian	13.3	12.0	10.6	3.4	5.0
Foreign	-	-	0.0	0.0	-
All Applicants to Saskatchewan	23.3	19.7	17.1	11.7	14.3

Success Rate: Percentage of applicants who received at least one offer of admission whether subsequently registered, declined or deferred.

In-Province refers to Canadian Citizens and Permanent Residents residing in the same province as the faculty. *Other Canadian* refers to Canadian Citizens and Permanent Residents residing outside the province of the faculty. *Foreign* refers to applicants who are not Canadian Citizens or Permanent Residents, including student visa holders, refugees, and refugee claimants.

Note: A dash (—) indicates no applicants were reported for that group. A value of 0 means applicants were reported, but none received an offer.

Faculty of Medicine & Dentistry, UNIVERSITY OF ALBERTA

Length of Program (Years):	4	<i>Notes:</i> N/A
Language of Instruction:	English	<i>Notes:</i> N/A
Testing of Language Proficiency:	Yes	<i>Notes:</i> N/A
New Admissions into Year One:	192	<i>Notes:</i> N/A

First-Year Tuition

- **Canadian Residents:** \$16,140.72¹
- **In-Province Residents:** \$16,140.72¹
- **Compulsory Fees:** \$1,213.80¹ (per term)
- **Visa Students:** N/A²
- **Foreign Students:** N/A²
(Above-Quota contract)

Tuition Details:

For more information, visit: www.ualberta.ca/en/registrar/costs-tuition-fees/undergraduate-tuition/dentistry-medicine-and-pgme-fees.html

Year One Position Breakdown:

85% of the positions are reserved for Alberta residents and 15% of the positions are for non-Alberta residents.

The Faculty of Medicine and Dentistry may provide up to thirty positions within quota for the MD program to qualified Rural applicants over and above the Rural applicants who were admitted in the regular process. Candidates will meet normal minimum admission requirements as outlined in Doctor of Medicine (MD) and the approval by the Faculty of Medicine and Dentistry Admissions Committee.

Selection Factors:

Canadian citizens/permanent residents may apply. Selection for admission is based on cumulative grade point average (CGPA), Medical College Admission Test (MCAT), personal activities, reference letters, interview and additional assessments as determined by Admission Commission.

Academic Criteria:

All applicants to the Doctor of Medicine Program must be registered in a baccalaureate degree from a program recognized by the University of Alberta and obtain their degree the year admission is sought or already have completed their degree program.

¹ Fees listed are for 2025-26 and are subject to change

² International students are not eligible for admission

Faculty of Medicine & Dentistry, UNIVERSITY OF ALBERTA

To be considered for admission, applicants must have achieved a minimum cumulative GPA (cGPA) of 3.3 for Alberta residents or 3.5 for non-Alberta residents and a minimum of 60 transferable units of course weight.

The minimum MCAT score to be eligible to apply for Albertan applicants is 124 in all categories (CPBS, CARS, BBFL, PSBB). The minimum MCAT score to be eligible to apply for non-Albertans is 128 in CARS and 124 in CPBS, BBFL, and PSBB.

Special Consideration:

No

Mean GPA:	3.30/4.0 (AB) or 3.5/4.0 (non-AB)	<i>Details:</i> The minimum cumulative GPA (cGPA) required to be eligible to apply for Albertan applicants is 3.30 on the UofA 4.0 grading scale. The minimum cGPA required to be eligible to apply for non-Albertan applicants is 3.50 on the UofA 4.0 grading scale.
MCAT Required?	Yes	<i>Details:</i> The minimum MCAT score to be eligible to apply for Albertan applicants is 124 in all categories (CPBS, CARS, BBFL, PSBB). The minimum MCAT score to be eligible to apply for non-Albertans is 128 in CARS and 124 in CPBS, BBFL, and PSBB.
CASPer Required?	No	<i>Details:</i> N/A
Deferred Admission?	Yes	<i>Details:</i> At discretion of Associate Dean, MD Program.
Transfers?	Yes	<i>Details:</i> At discretion of Associate Dean, MD Program.

Combined Programs:

MD/MBA, MD/PhD, MD (with Special Training in Research), MD/MSc

Application Details:

Start Date:	July, 2026
Deadline:	October 1, 2026 ¹
Fee:	<ul style="list-style-type: none"> • \$205 for undergraduate students new to the UofA (includes \$150 general undergraduate application fee plus \$55 supplemental MD Program application fee). • \$155 for current or former UofA undergraduate students (includes \$100 general undergraduate application fee plus \$55 supplemental MD Program application fee).
Form Type:	Electronic application process

¹ Update not available yet - subject to change later

Faculty of Medicine & Dentistry, UNIVERSITY OF ALBERTA

Fee Waiver Programs: www.ualberta.ca/en/medicine/programs/md/admissions/before-you-apply/financial-assistance.html

Interview Details:

Types: MMI and Panel, Rural Panel Interview
Date: TBD
Location: Virtual
In-Province/Out-of-Province/Out-of-Canada/Total: TBD
Fees: N/A

Offer of Admission Details:

Date: May 2027
Number of Offers: N/A
Deposit: \$1,000.00
Distribution Type: E-mail

To Request an Application or More Detailed Information:

Website: www.ualberta.ca/medicine/programs/md/applying-to-medicine/apply-now/index.html

Admissions Office,
 Undergraduate Medical Education, Faculty of
 Medicine & Dentistry
 University of Alberta
 1-002 Katz Group Centre for Pharmacy and Health
 Research,
 Edmonton AB T6G 2E1

Tel: 780-492-8775

Fax: 780-492-9531

E-Mail: mdadmission@ualberta.ca

Website: www.ualberta.ca/medicine/programs/md/applying-to-medicine/index.html

Apps: apply.ualberta.ca/apply/

YEAR FOR WHICH ADMISSION WAS SOUGHT

	2020/21	2021/22	2022/23	2023/24	2024/25
Applicant Statistics: U. of Alberta					
Offered and Registered	157	169	167	171	174
Offered Deferred	3	0	5	10	6
Offer Declined	40	53	36	43	64
Not Offered	1,415	1,580	1,432	1,528	1,728
Total Applicants	1,615	1,802	1,640	1,752	1,972

SUCCESS RATE (%) BY RESIDENCE					
Alberta	15.5	15.5	15.1	16.1	15.1
Other Canadian	7.7	7.3	8.0	8.6	8.0
Foreign	-	-	-	-	0.0
All Applicants to U. of Alberta	12.4	12.3	12.7	13.4	12.4

Success Rate: Percentage of applicants who received at least one offer of admission whether subsequently registered, declined or deferred.

In-Province refers to Canadian Citizens and Permanent Residents residing in the same province as the faculty. *Other Canadian* refers to Canadian Citizens and Permanent Residents residing outside the province of the faculty. *Foreign* refers to applicants who are not Canadian Citizens or Permanent Residents, including student visa holders, refugees, and refugee claimants.

Note: A dash (—) indicates no applicants were reported for that group.

Cumming School of Medicine, UNIVERSITY OF CALGARY

Length of Program (Years):	3	<i>Notes: N/A</i>
Language of Instruction:	English	<i>Notes: N/A</i>
Testing of Language Proficiency:	No	<i>Notes: N/A</i>
New Admissions into Year One:	185	<i>Notes: N/A</i>

First-Year Tuition

- **Canadian Residents:** \$25,244¹
- **In-Province Residents:** \$25,244¹
- **Compulsory Fees:** \$2,588¹
- **Visa Students:** N/A²
- **Foreign Students:** N/A²
(Above-Quota contract)

Tuition Details:

N/A

Year One Position Breakdown:

Ninety percent of year one positions are filled by residents of Alberta.

Selection Factors:

Canadian citizens/permanent residents may apply.

Academic Criteria:

Two years full-time university/college are required. Although there are no prerequisite courses, applicants are encouraged to consider the courses described on the school's website.

Special Consideration:

Refer to the applicant manual for special consideration of units/credits completed during the Winter 2020 term.

¹ Fees listed are for the 2025-26 academic year and are subject to change.

² Individual international applications are not accepted; applicants must apply through formal institutional or country agreements.

Cumming School of Medicine, UNIVERSITY OF CALGARY

Mean GPA:	3.88	<i>Details:</i>	The minimum acceptable grade point average is 3.20 for residents of Alberta and 3.80 for residents outside of Alberta on a 4.0-point scale. The mean grade point average of successful applicants in 2024/25 was 3.88.
MCAT Required?	Yes	<i>Details:</i>	Minimum 128 on CARS for out of province applicants.
CASPer Required?	No	<i>Details:</i>	N/A
Deferred Admission?	Yes	<i>Details:</i>	N/A
Transfers?	No	<i>Details:</i>	N/A

Combined Programs:

MD/MBA, MD/MSc, MD/PhD (other combinations are possible)

Application Details:

<i>Start Date:</i>	July 1, 2026
<i>Deadline:</i>	October 1, 2026 (4:00pm MST)
<i>Fee:</i>	\$150.00
<i>Form Type:</i>	Electronic application
<i>Fee Waiver Programs:</i>	None

Interview Details:

<i>Types:</i>	MMI - in-person
<i>Date:</i>	February / March 2027
<i>Location:</i>	Health Sciences Centre
<i># In-Province/Out-of-Province/ Out-of-Canada/Total:</i>	543/119/0/662
<i>Fees:</i>	N/A

Offer of Admission Details:

<i>Date:</i>	May 15, 2027
<i>Number of Offers:</i>	N/A
<i>Deposit:</i>	\$1,000.00
<i>Distribution Type:</i>	E-mail

Cumming School of Medicine, UNIVERSITY OF CALGARY

To Request an Application or More Detailed Information:

Office of MD Admissions, Cumming School of
Medicine
University of Calgary
G212, 3330 Hospital Drive NW
Calgary AB T2N 4N1

Tel: 403-220-4262
Fax: 403-210-8148
E-Mail: ucmedapp@ucalgary.ca
Website: www.ucalgary.ca/mdprogram/admissions
Apps: ucan.ucalgary.ca

YEAR FOR WHICH ADMISSION WAS SOUGHT

	2020/21	2021/22	2022/23	2023/24	2024/25
Applicant Statistics: Calgary					
Offered and Registered	134	131	153	165	167
Offered Deferred	12	10	20	24	19
Offer Declined	95	92	91	79	67
Not Offered	1,367	1,806	1,574	1,599	1,795
Total Applicants	1,608	2,039	1,838	1,867	2,048

SUCCESS RATE (%) BY RESIDENCE					
Alberta	15.2	11.8	14.6	15.7	12.7
Other Canadian	14.7	10.4	15.5	12.8	12.4
Foreign	0.0	0.0	11.1	33.3	33.3
All Applicants to Calgary	15.0	11.6	14.8	14.9	12.6

Success Rate: Percentage of applicants who received at least one offer of admission whether subsequently registered, declined or deferred.

In-Province refers to Canadian Citizens and Permanent Residents residing in the same province as the faculty. *Other Canadian* refers to Canadian Citizens and Permanent Residents residing outside the province of the faculty. *Foreign* refers to applicants who are not Canadian Citizens or Permanent Residents, including student visa holders, refugees, and refugee claimants.

Note: A value of 0 means applicants were reported, but none received an offer.

Faculty of Medicine, UNIVERSITY OF BRITISH COLUMBIA

Length of Program (Years):	4	<i>Notes:</i> N/A
Language of Instruction:	English	<i>Notes:</i> N/A
Testing of Language Proficiency:	Yes	<i>Notes:</i> All prospective students are required to demonstrate a minimum level of English before they're admitted. you.ubc.ca/applying-ubc/requirements/english-language-competency/
New Admissions into Year One:	328	<i>Notes:</i> N/A

First-Year Tuition

- **Canadian Residents:** \$24,838¹
- **In-Province Residents:** \$24,838¹
- **Compulsory Fees:** \$4,035¹ (includes both compulsory and recommended fees)
- **Visa Students:** Not accepted - must be Canadian citizen or permanent resident
- **Foreign Students:** Not accepted - must be Canadian citizen or permanent resident
(Above-Quota contract)

Tuition Details:

Please see UBC MD Program website for more information: mdprogram.med.ubc.ca/student-affairs/financial-support/cost-of-an-md-student/

Year One Position Breakdown:

Goal of 16 positions to be filled by Indigenous applicants, up to 8 positions available to applicants to the MD/PhD program, and 62 positions available through the Northern and Rural Admissions pathway. A maximum of 33 positions will be available to out-of-province residents.

See website for more information: mdprogram.med.ubc.ca/admissions/before-you-apply/pathways-to-medicine/

Selection Factors:

The 328 positions are allocated to four campuses: 208 at the Vancouver Fraser Medical Program; 40 at the Island Medical Program (in Victoria); 40 at the Northern Medical Program (in Prince George); 40 at the Southern Medical Program (in Kelowna). All positions are filled based on the same selection criteria; however, a rural and remote suitability assessment is also used to consider and assign students to the Northern Medical Program, up to 14 seats at the Southern Medical Program, up to 4 seats at the Island Medical Program, and up to 4 seats at the Vancouver Fraser Medical Program in the Fraser Medical Cohort. Canadian citizens/permanent residents/persons with Canadian refugee status may apply.

Academic Criteria:

Please review the UBC MD Admissions website for academic criteria. mdprogram.med.ubc.ca/admissions/before-you-apply/evaluation-criteria/.

¹ Fees for 2027-28 are not yet posted; check the website for updates: mdprogram.med.ubc.ca/student-affairs/financial-support/cost-of-an-md-student/

Faculty of Medicine, UNIVERSITY OF BRITISH COLUMBIA

Special Consideration:

Indigenous, Northern, Rural, Black Student, and MD/PhD pathways:

The UBC MD Undergraduate Program (MDUP) is committed to being an accessible and inclusive program, and students with disabilities are welcomed, supported, and provided equitable opportunity to successfully complete the program requirements, including the provision of accommodations. The Core Competencies for Entering Medical Students form the basis of the knowledge, skills, and behaviours required to achieve the medical education program objectives, and in conjunction with the academic standards, are requirements for admission to the program.

The UBC Centre for Accessibility assesses requests for accommodation and provides recommendations for disability-related accommodations and programming initiatives designed to remove barriers for students with disabilities and ongoing medical conditions in all aspects of university life. The Disability Accommodation Policy LR7 provides guidance for students, faculty, and staff to understand the process through which accommodations for students with disabilities are provided at the University. We respect a student's lived experience and expertise in their own disability and actively partner with the student to achieve accessibility and access accommodations. Students are reassured that medical information supporting an accommodation request is treated confidentially.

Conversations and communications about restrictions or impairment take place on a "need to know basis" and may be shared with people responsible for providing the requested or required accommodation.

Applicants with disabilities may seek special consideration in the MD Admissions process. In exceptional circumstances, applicants with disabilities may be eligible for special consideration in the calculation of their grades. However, even in these circumstances, applicants must meet the competitive average. To request accommodation, applicants with disabilities must submit the following documents to the Centre for Accessibility:

- Special Consideration Form
- Documentation of disability (guidelines on the Centre for Accessibility website)
- A letter outlining the rationale for requesting special consideration

Faculty of Medicine, UNIVERSITY OF BRITISH COLUMBIA

Mean GPA:	88.92%	<i>Details:</i> The minimum acceptable average for in province applicants is 75% on a 100% scale. The minimum average for out-of-province applicants is 85% (visit the UBC MD website for up-to-date information on minimum academic standing).
MCAT Required?	Yes	<i>Details:</i> Please visit the website for information on MCAT eligibility: mdprogram.med.ubc.ca/admissions/before-you-apply/admission-requirements/
CASPer Required?	No	<i>Details:</i> N/A
Deferred Admission?	Yes	<i>Details:</i> Only granted in exceptional circumstances.
Transfers?	Yes	<i>Details:</i> The UBC MD Undergraduate Program rarely accepts transfers and only for students who are accredited by CACMS. Our website will be updated by October 31, 2026, if transfers are being accepted for the 2027-2028 school year. Please visit our website and click "Admission of Students by Transfer" for more detailed information about transfer availability and conditions for transfer in November of 2026: mdprogram.med.ubc.ca/admissions/after-you-apply/post-acceptance-conditions/

Combined Programs:

MD/PhD

mdprogram.med.ubc.ca/mdphd/**Application Details:**

<i>Start Date:</i>	Mid-June 2026
<i>Deadline:</i>	September 15, 2026
<i>Fee:</i>	BC Residents: \$141.75 Out of Province Applicants: \$210.50 Out of Province Transcripts (any number): \$39.00
<i>Form Type:</i>	oas.med.ubc.ca/Security/Login.aspx
<i>Fee Waiver Programs:</i>	None

Interview Details:

<i>Types:</i>	MMI, Panel Interview
<i>Date:</i>	TBD
<i>Location:</i>	TBD
<i># In-Province/Out-of-Province/ Out-of-Canada/Total:</i>	Total 800 ¹
<i>Fees:</i>	N/A

¹ Update not available yet - subject to change later

Faculty of Medicine, UNIVERSITY OF BRITISH COLUMBIA

Offer of Admission Details:

Date: May 2027
Number of Offers: TBD
Deposit: \$1,000.00
Distribution Type: E-mail

To Request an Application or More Detailed Information:

Email: admissions.md@ubc.ca

Tel: 604-822-9911

Fax: N/A

E-Mail: admissions.md@ubc.ca

Website: mdprogram.med.ubc.ca/admissions/

Apps: mdprogram.med.ubc.ca/admissions/when-you-apply/online-application-system/

YEAR FOR WHICH ADMISSION WAS SOUGHT

	2020/21	2021/22	2022/23	2023/24	2024/25
Applicant Statistics: UBC					
Offered and Registered	287	284	280	304	323
Offered Deferred	4	10	2	7	5
Offer Declined	37	53	41	55	68
Not Offered	2,237	2,525	2,507	2,449	2,519
Total Applicants	2,565	2,872	2,830	2,815	2,915

SUCCESS RATE (%) BY RESIDENCE					
British Columbia	17.7	16.0	16.1	17.5	18.4
Other Canadian	5.7	6.9	5.3	7.5	7.6
Foreign	-	-	-	0.0	0.0
All Applicants to UBC	12.8	12.1	11.4	12.9	13.3

Success Rate: Percentage of applicants who received at least one offer of admission whether subsequently registered, declined or deferred.

In-Province refers to Canadian Citizens and Permanent Residents residing in the same province as the faculty. *Other Canadian* refers to Canadian Citizens and Permanent Residents residing outside the province of the faculty. *Foreign* refers to applicants who are not Canadian Citizens or Permanent Residents, including student visa holders, refugees, and refugee claimants.

Note: A dash (—) indicates no applicants were reported for that group. A value of 0 means applicants were reported, but none received an offer.

School of Medicine, SIMON FRASER UNIVERSITY

Coming soon

Simon Fraser University will welcome the first cohort to its MD program in August 2026. The program will be based at the SFU Surrey campus.

Admission requirement details are not yet available in this publication. AFMC is currently working with the institution to incorporate this information by late Spring / early Summer 2026.

In the meantime, applicants are encouraged to consult the SFU School of Medicine website for the most up-to-date information on admission requirements: www.sfu.ca/medicine/admissions/before-you-apply

Please check back for updates as admission requirements for the SFU MD program become available.

Admission Statistics for Simon Fraser University

Currently the AFMC has not collected any admission statistics from the faculty. Future iterations of the admission guidebook will contain admission statistics as the data becomes available.



THE ASSOCIATION OF FACULTIES
OF MEDICINE OF CANADA

L'ASSOCIATION DES FACULTÉS
DE MÉDECINE DU CANADA